
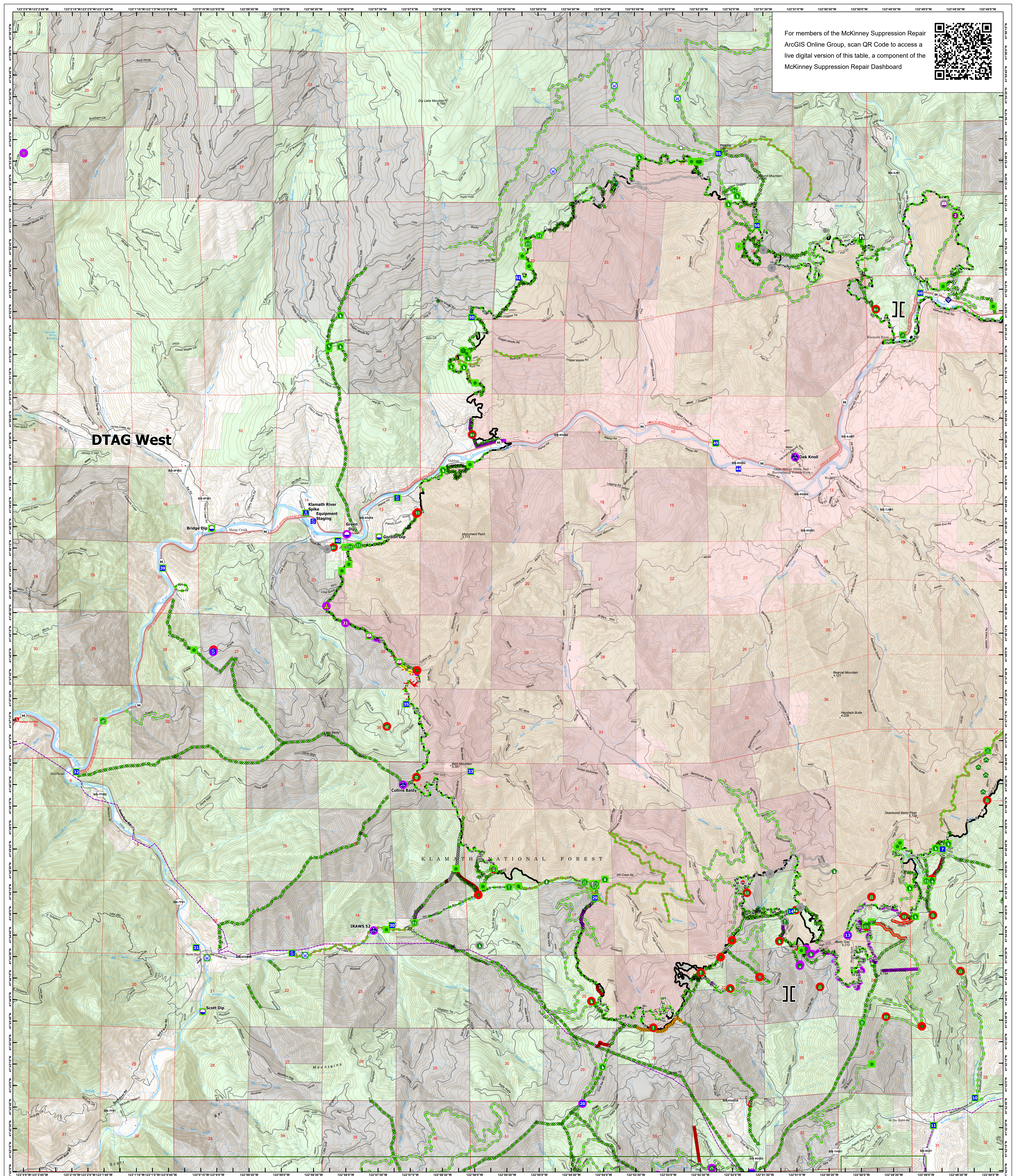


For members of the McKinney Suppression Repair ArcGIS Online Group, scan QR Code to access a live digital version of this table, a component of the McKinney Suppression Repair Dashboard

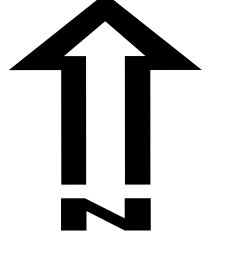
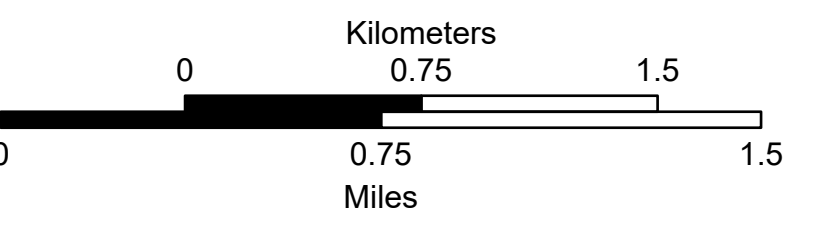

# SUPPRESSION REPAIR WEST

McKinney  
CA-KNF-006177  
09/22/2022  
60,138 acres on Effective 8/23/2022

<p><b>Repair Status: Points</b></p> <ul style="list-style-type: none"> <li>In Use - Fire Management</li> <li>Needs Assessment</li> <li>Repair Needed</li> <li>In Progress</li> <li>Completed - Ready for Inspection</li> <li>Completed - Inspected</li> <li>Other - See Comments</li> </ul> <p><b>Repair Status: Lines</b></p> <ul style="list-style-type: none"> <li>In Use - Fire Management</li> <li>Needs Assessment</li> <li>Repair Needed</li> <li>In Progress</li> <li>Completed - Ready for Inspection</li> <li>Completed - Inspected</li> <li>Other - See Comments</li> <li>In Use - Fire Management</li> </ul>	<p><b>Wildfire Daily Fire Perimeter</b></p> <ul style="list-style-type: none"> <li>Contained</li> <li>Uncontained</li> </ul> <p><b>Ops Completed</b></p> <ul style="list-style-type: none"> <li>Completed Dozer Line</li> <li>Completed Mixed Construction Line</li> <li>Completed Road as Line</li> </ul> <p><b>Reference</b></p> <ul style="list-style-type: none"> <li>Access or Improved Road</li> <li>Repair Line</li> <li>Road Repair</li> </ul>	<p><b>Air Operations</b></p> <ul style="list-style-type: none"> <li>Dip Site</li> <li>Helispot</li> <li>Sling Site</li> </ul> <p><b>Assignment Breaks</b></p> <ul style="list-style-type: none"> <li>Branch Break</li> </ul> <p><b>Logistics</b></p> <ul style="list-style-type: none"> <li>Drop Point</li> <li>Camp</li> <li>Staging Area</li> <li>Operations</li> <li>Lookout</li> </ul> <p><b>Reference</b></p> <ul style="list-style-type: none"> <li>Value at Risk</li> <li>Other</li> <li>Landmark</li> <li>Gate</li> </ul>	<p><b>Repair</b></p> <ul style="list-style-type: none"> <li>Water Development or Draft Site</li> <li>Stream Crossing</li> <li>Road Repair</li> <li>Resource Location</li> <li>Repair Point</li> <li>Landing or Log Deck</li> <li>Hazard Tree</li> <li>Fence - Cut/Damaged</li> <li>Dozer Push</li> <li>Culvert</li> <li>Clean Up Area</li> <li>Communications</li> <li>Mobile Weather Unit</li> <li>Internet Access</li> <li>Safety</li> <li>Safety Zone</li> </ul> <p><b>Water</b></p> <ul style="list-style-type: none"> <li>Water Source</li> <li>Proclaimed FS Boundary</li> <li>Forestry Industry Owners</li> </ul>
--	--	---	--

Spatial Reference  
Name: NAD 1983 UTM Zone 10N  
Datum: North American 1983

Scale: 1:24,000

REPAIR WEST