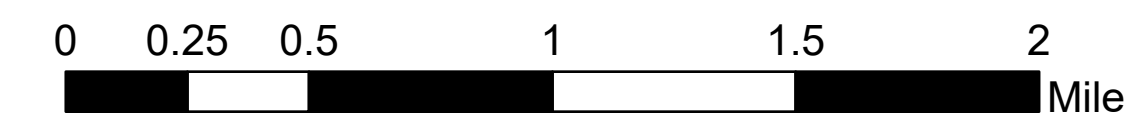


TAG w/Slope

McKinney
CA-KNF-006177
09/22/2022

60,138 acres. Effective 8/23/2022



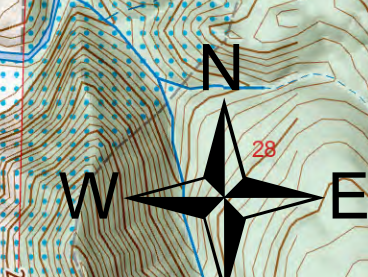
- Landing or Log Deck
 - Unimproved Landing Area
 - Hand Work
 - Machine Work
 - Mixed Hand and Machine
 - No Work Needed
 - TAG Line Status With Priority Labeled
 - Work Completed
 - Needs Mitigation
 - Work In Progress
 - Branch Break
 - Drop Point
- Slope
- ≤1.72
 - ≤3.43
 - ≤5.14
 - ≤6.85
 - ≤8.56
 - ≤10.27
 - ≤11.98
 - ≤13.69
 - ≤15.40
 - ≤17.11
 - ≤18.82
 - ≤20.53
 - ≤22.24
 - ≤23.95
 - ≤25.66
 - ≤27.37
 - ≤29.08
 - ≤30.79
 - ≤32.50
 - ≤34.21
 - ≤35.92
 - ≤37.63
 - ≤39.34
 - ≤41.05
 - ≤42.76
 - ≤44.47
 - ≤46.18
 - ≤47.89
 - ≤49.60
 - ≤51.31
 - ≤53.02
 - ≤54.73
 - ≤56.44
 - ≤58.15
 - ≤59.86
 - ≤61.57
 - ≤63.28
 - ≤64.99
 - ≤66.70
 - ≤68.41
 - ≤70.12
 - ≤71.83
 - ≤73.54
 - ≤75.25
 - ≤76.96
 - ≤78.67
 - ≤80.38
 - ≤82.09
 - ≤83.80
 - ≤85.51
 - ≤87.22
 - ≤88.93
 - ≤90.64
 - ≤92.35
 - ≤94.06
 - ≤95.77
 - ≤97.48
 - ≤99.19
 - ≤100.90
 - ≤102.61
 - ≤104.32
 - ≤106.03
 - ≤107.74
 - ≤109.45
 - ≤111.16
 - ≤112.87
 - ≤114.58
 - ≤116.29
 - ≤118.00
 - ≤119.71
 - ≤121.42
 - ≤123.13
 - ≤124.84
 - ≤126.55
 - ≤128.26
 - ≤129.97
 - ≤131.68
 - ≤133.39
 - ≤135.10
 - ≤136.81
 - ≤138.52
 - ≤140.23
 - ≤141.94
 - ≤143.65
 - ≤145.36
 - ≤147.07
 - ≤148.78
 - ≤150.49
 - ≤152.20
 - ≤153.91
 - ≤155.62
 - ≤157.33
 - ≤159.04
 - ≤160.75
 - ≤162.46
 - ≤164.17
 - ≤165.88
 - ≤167.59
 - ≤169.30
 - ≤171.01
 - ≤172.72
 - ≤174.43
 - ≤176.14
 - ≤177.85
 - ≤179.56
 - ≤181.27
 - ≤182.98
 - ≤184.69
 - ≤186.40
 - ≤188.11
 - ≤189.82
 - ≤191.53
 - ≤193.24
 - ≤194.95
 - ≤196.66
 - ≤198.37
 - ≤200.08
 - ≤201.79
 - ≤203.50
 - ≤205.21
 - ≤206.92
 - ≤208.63
 - ≤210.34
 - ≤212.05
 - ≤213.76
 - ≤215.47
 - ≤217.18
 - ≤218.89
 - ≤220.60
 - ≤222.31
 - ≤224.02
 - ≤225.73
 - ≤227.44
 - ≤229.15
 - ≤230.86
 - ≤232.57
 - ≤234.28
 - ≤235.99
 - ≤237.70
 - ≤239.41
 - ≤241.12
 - ≤242.83
 - ≤244.54
 - ≤246.25
 - ≤247.96
 - ≤249.67
 - ≤251.38
 - ≤253.09
 - ≤254.80
 - ≤256.51
 - ≤258.22
 - ≤259.93
 - ≤261.64
 - ≤263.35
 - ≤265.06
 - ≤266.77
 - ≤268.48
 - ≤270.19
 - ≤271.90
 - ≤273.61
 - ≤275.32
 - ≤277.03
 - ≤278.74
 - ≤280.45
 - ≤282.16
 - ≤283.87
 - ≤285.58
 - ≤287.29
 - ≤289.00
 - ≤290.71
 - ≤292.42
 - ≤294.13
 - ≤295.84
 - ≤297.55
 - ≤299.26
 - ≤300.97
 - ≤302.68
 - ≤304.39
 - ≤306.10
 - ≤307.81
 - ≤309.52
 - ≤311.23
 - ≤312.94
 - ≤314.65
 - ≤316.36
 - ≤318.07
 - ≤319.78
 - ≤321.49
 - ≤323.20
 - ≤324.91
 - ≤326.62
 - ≤328.33
 - ≤330.04
 - ≤331.75
 - ≤333.46
 - ≤335.17
 - ≤336.88
 - ≤338.59
 - ≤340.30
 - ≤342.01
 - ≤343.72
 - ≤345.43
 - ≤347.14
 - ≤348.85
 - ≤350.56
 - ≤352.27
 - ≤353.98
 - ≤355.69
 - ≤357.40
 - ≤359.11
 - ≤360.82
 - ≤362.53
 - ≤364.24
 - ≤365.95
 - ≤367.66
 - ≤369.37
 - ≤371.08
 - ≤372.79
 - ≤374.50
 - ≤376.21
 - ≤377.92
 - ≤379.63
 - ≤381.34
 - ≤383.05
 - ≤384.76
 - ≤386.47
 - ≤388.18
 - ≤389.89
 - ≤391.60
 - ≤393.31
 - ≤395.02
 - ≤396.73
 - ≤398.44
 - ≤400.15
 - ≤401.86
 - ≤403.57
 - ≤405.28
 - ≤406.99
 - ≤408.70
 - ≤410.41
 - ≤412.12
 - ≤413.83
 - ≤415.54
 - ≤417.25
 - ≤418.96
 - ≤420.67
 - ≤422.38
 - ≤424.09
 - ≤425.80
 - ≤427.51
 - ≤429.22
 - ≤430.93
 - ≤432.64
 - ≤434.35
 - ≤436.06
 - ≤437.77
 - ≤439.48
 - ≤441.19
 - ≤442.90
 - ≤444.61
 - ≤446.32
 - ≤448.03
 - ≤449.74
 - ≤451.45
 - ≤453.16
 - ≤454.87
 - ≤456.58
 - ≤458.29
 - ≤460.00
 - ≤461.71
 - ≤463.42
 - ≤465.13
 - ≤466.84
 - ≤468.55
 - ≤470.26
 - ≤471.97
 - ≤473.68
 - ≤475.39
 - ≤477.10
 - ≤478.81
 - ≤480.52
 - ≤482.23
 - ≤483.94
 - ≤485.65
 - ≤487.36
 - ≤489.07
 - ≤490.78
 - ≤492.49
 - ≤494.20
 - ≤495.91
 - ≤497.62
 - ≤499.33
 - ≤501.04
 - ≤502.75
 - ≤504.46
 - ≤506.17
 - ≤507.88
 - ≤509.59
 - ≤511.30
 - ≤513.01
 - ≤514.72
 - ≤516.43
 - ≤518.14
 - ≤519.85
 - ≤521.56
 - ≤523.27
 - ≤524.98
 - ≤526.69
 - ≤528.40
 - ≤530.11
 - ≤531.82
 - ≤533.53
 - ≤535.24
 - ≤536.95
 - ≤538.66
 - ≤540.37
 - ≤542.08
 - ≤543.79
 - ≤545.50
 - ≤547.21
 - ≤548.92
 - ≤550.63
 - ≤552.34
 - ≤554.05
 - ≤555.76
 - ≤557.47
 - ≤559.18
 - ≤560.89
 - ≤562.60
 - ≤564.31
 - ≤566.02
 - ≤567.73
 - ≤569.44
 - ≤571.15
 - ≤572.86
 - ≤574.57
 - ≤576.28
 - ≤577.99
 - ≤579.70
 - ≤581.41
 - ≤583.12
 - ≤584.83
 - ≤586.54
 - ≤588.25
 - ≤589.96
 - ≤591.67
 - ≤593.38
 - ≤595.09
 - ≤596.80
 - ≤598.51
 - ≤600.22
 - ≤601.93
 - ≤603.64
 - ≤605.35
 - ≤607.06
 - ≤608.77
 - ≤610.48
 - ≤612.19
 - ≤613.90
 - ≤615.61
 - ≤617.32
 - ≤619.03
 - ≤620.74
 - ≤622.45
 - ≤624.16
 - ≤625.87
 - ≤627.58
 - ≤629.29
 - ≤631.00
 - ≤632.71
 - ≤634.42
 - ≤636.13
 - ≤637.84
 - ≤639.55
 - ≤641.26
 - ≤642.97
 - ≤644.68
 - ≤646.39
 - ≤648.10
 - ≤649.81
 - ≤651.52
 - ≤653.23
 - ≤654.94
 - ≤656.65
 - ≤658.36
 - ≤660.07
 - ≤661.78
 - ≤663.49
 - ≤665.20
 - ≤666.91
 - ≤668.62
 - ≤670.33
 - ≤672.04
 - ≤673.75
 - ≤675.46
 - ≤677.17
 - ≤678.88
 - ≤680.59
 - ≤682.30
 - ≤684.01
 - ≤685.72
 - ≤687.43
 - ≤689.14
 - ≤690.85
 - ≤692.56
 - ≤694.27
 - ≤695.98
 - ≤697.69
 - ≤699.40
 - ≤701.11
 - ≤702.82
 - ≤704.53
 - ≤706.24
 - ≤707.95
 - ≤709.66
 - ≤711.37
 - ≤713.08
 - ≤714.79
 - ≤716.50
 - ≤718.21
 - ≤719.92
 - ≤721.63
 - ≤723.34
 - ≤725.05
 - ≤726.76
 - ≤728.47
 - ≤730.18
 - ≤731.89
 - ≤733.60
 - ≤735.31
 - ≤737.02
 - ≤738.73
 - ≤740.44
 - ≤742.15
 - ≤743.86
 - ≤745.57
 - ≤747.28
 - ≤748.99
 - ≤750.70
 - ≤752.41
 - ≤754.12
 - ≤755.83
 - ≤757.54
 - ≤759.25
 - ≤760.96
 - ≤762.67
 - ≤764.38
 - ≤766.09
 - ≤767.80
 - ≤769.51
 - ≤771.22
 - ≤772.93
 - ≤774.64
 - ≤776.35
 - ≤778.06
 - ≤779.77
 - ≤781.48
 - ≤783.19
 - ≤784.90
 - ≤786.61
 - ≤788.32
 - ≤790.03
 - ≤791.74
 - ≤793.45
 - ≤795.16
 - ≤796.87
 - ≤798.58
 - ≤800.29
 - ≤802.00
 - ≤803.71
 - ≤805.42
 - ≤807.13
 - ≤808.84
 - ≤810.55
 - ≤812.26
 - ≤813.97
 - ≤815.68
 - ≤817.39
 - ≤819.10
 - ≤820.81
 - ≤822.52
 - ≤824.23
 - ≤825.94
 - ≤827.65
 - ≤829.36
 - ≤831.07
 - ≤832.78
 - ≤834.49
 - ≤836.20
 - ≤837.91
 - ≤839.62
 - ≤841.33
 - ≤843.04
 - ≤844.75
 - ≤846.46
 - ≤848.17
 - ≤849.88
 - ≤851.59
 - ≤853.30
 - ≤855.01
 - ≤856.72
 - ≤858.43
 - ≤860.14
 - ≤861.85
 - ≤863.56
 - ≤865.27
 - ≤866.98
 - ≤868.69
 - ≤870.40
 - ≤872.11
 - ≤873.82
 - ≤875.53
 - ≤877.24
 - ≤878.95
 - ≤880.66
 - ≤882.37
 - ≤884.08
 - ≤885.79
 - ≤887.50
 - ≤889.21
 - ≤890.92
 - ≤892.63
 - ≤894.34
 - ≤896.05
 - ≤897.76
 - ≤899.47
 - ≤901.18
 - ≤902.89
 - ≤904.60
 - ≤906.31
 - ≤908.02
 - ≤909.73
 - ≤911.44
 - ≤913.15
 - ≤914.86
 - ≤916.57
 - ≤918.28
 - ≤920.00
 - ≤921.71
 - ≤923.42
 - ≤925.13
 - ≤926.84
 - ≤928.55
 - ≤930.26
 - ≤931.97
 - ≤933.68
 - ≤935.39
 - ≤937.10
 - ≤938.81
 - ≤940.52
 - ≤942.23
 - ≤943.94
 - ≤945.65
 - ≤947.36
 - ≤949.07
 - ≤950.78
 - ≤952.49
 - ≤954.20
 - ≤955.91
 - ≤957.62
 - ≤959.33
 - ≤961.04
 - ≤962.75
 - ≤964.46
 - ≤966.17
 - ≤967.88
 - ≤969.59
 - ≤971.30
 - ≤973.01
 - ≤974.72
 - ≤976.43
 - ≤978.14
 - ≤979.85
 - ≤981.56
 - ≤983.27
 - ≤984.98
 - ≤986.69
 - ≤988.40
 - ≤990.11
 - ≤991.82
 - ≤993.53
 - ≤995.24
 - ≤996.95
 - ≤998.66
 - ≤1000.37



DTAG East

DTAG West

Work Completed **13.9 Miles** Work In Progress **10.2 Miles** Need Mitigation **51.5 Miles**



Daniel LaBarre
9/21/2022 1750
Acres from IR and GPS
North American 1983 Datum LatLong
Grid

