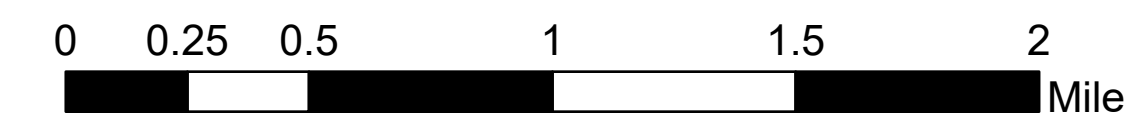


# TAG w/Slope

McKinney  
CA-KNF-006177  
09/23/2022

60,138 acres. Effective 8/23/2022



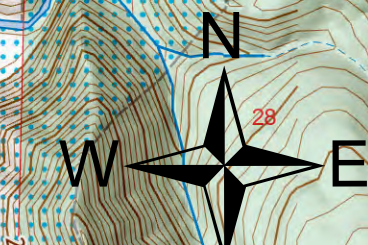
- Landing or Log Deck
  - Unimproved Landing Area
  - Hand Work
  - Machine Work
  - Mixed Hand and Machine
  - No Work Needed
  - TAG Line Status With Priority Labeled
  - Work Completed
  - Needs Mitigation
  - Work In Progress
  - Branch Point
  - Drop Point
- Slope
- ≤1.72
  - ≤3.43
  - ≤5.14
  - ≤6.85
  - ≤8.56
  - ≤10.27
  - ≤11.98
  - ≤13.69
  - ≤15.40
  - ≤17.11
  - ≤18.82
  - ≤20.53
  - ≤22.24
  - ≤23.95
  - ≤25.66
  - ≤27.37
  - ≤29.08
  - ≤30.79
  - ≤32.50
  - ≤34.21
  - ≤35.92
  - ≤37.63
  - ≤39.34
  - ≤41.05
  - ≤42.76
  - ≤44.47
  - ≤46.18
  - ≤47.89
  - ≤49.60
  - ≤51.31
  - ≤53.02
  - ≤54.73
  - ≤56.44
  - ≤58.15
  - ≤59.86
  - ≤61.57
  - ≤63.28
  - ≤64.99
  - ≤66.70
  - ≤68.41
  - ≤70.12
  - ≤71.83
  - ≤73.54
  - ≤75.25
  - ≤76.96
  - ≤78.67
  - ≤80.38
  - ≤82.09
  - ≤83.80
  - ≤85.51
  - ≤87.22
  - ≤88.93
  - ≤90.64
  - ≤92.35
  - ≤94.06
  - ≤95.77
  - ≤97.48
  - ≤99.19
  - ≤100.90
  - ≤102.61
  - ≤104.32
  - ≤106.03
  - ≤107.74
  - ≤109.45
  - ≤111.16
  - ≤112.87
  - ≤114.58
  - ≤116.29
  - ≤118.00
  - ≤119.71
  - ≤121.42
  - ≤123.13
  - ≤124.84
  - ≤126.55
  - ≤128.26
  - ≤129.97
  - ≤131.68
  - ≤133.39
  - ≤135.10
  - ≤136.81
  - ≤138.52
  - ≤140.23
  - ≤141.94
  - ≤143.65
  - ≤145.36
  - ≤147.07
  - ≤148.78
  - ≤150.49
  - ≤152.20
  - ≤153.91
  - ≤155.62
  - ≤157.33
  - ≤159.04
  - ≤160.75
  - ≤162.46
  - ≤164.17
  - ≤165.88
  - ≤167.59
  - ≤169.30
  - ≤171.01
  - ≤172.72
  - ≤174.43
  - ≤176.14
  - ≤177.85
  - ≤179.56
  - ≤181.27
  - ≤182.98
  - ≤184.69
  - ≤186.40
  - ≤188.11
  - ≤189.82
  - ≤191.53
  - ≤193.24
  - ≤194.95
  - ≤196.66
  - ≤198.37
  - ≤200.08
  - ≤201.79
  - ≤203.50
  - ≤205.21
  - ≤206.92
  - ≤208.63
  - ≤210.34
  - ≤212.05
  - ≤213.76
  - ≤215.47
  - ≤217.18
  - ≤218.89
  - ≤220.60
  - ≤222.31
  - ≤224.02
  - ≤225.73
  - ≤227.44
  - ≤229.15
  - ≤230.86
  - ≤232.57
  - ≤234.28
  - ≤235.99
  - ≤237.70
  - ≤239.41
  - ≤241.12
  - ≤242.83
  - ≤244.54
  - ≤246.25
  - ≤247.96
  - ≤249.67
  - ≤251.38
  - ≤253.09
  - ≤254.80
  - ≤256.51
  - ≤258.22
  - ≤259.93
  - ≤261.64
  - ≤263.35
  - ≤265.06
  - ≤266.77
  - ≤268.48
  - ≤270.19
  - ≤271.90
  - ≤273.61
  - ≤275.32
  - ≤277.03
  - ≤278.74
  - ≤280.45
  - ≤282.16
  - ≤283.87
  - ≤285.58
  - ≤287.29
  - ≤289.00
  - ≤290.71
  - ≤292.42
  - ≤294.13
  - ≤295.84
  - ≤297.55
  - ≤299.26
  - ≤300.97
  - ≤302.68
  - ≤304.39
  - ≤306.10
  - ≤307.81
  - ≤309.52
  - ≤311.23
  - ≤312.94
  - ≤314.65
  - ≤316.36
  - ≤318.07
  - ≤319.78
  - ≤321.49
  - ≤323.20
  - ≤324.91
  - ≤326.62
  - ≤328.33
  - ≤330.04
  - ≤331.75
  - ≤333.46
  - ≤335.17
  - ≤336.88
  - ≤338.59
  - ≤340.30
  - ≤342.01
  - ≤343.72
  - ≤345.43
  - ≤347.14
  - ≤348.85
  - ≤350.56
  - ≤352.27
  - ≤353.98
  - ≤355.69
  - ≤357.40
  - ≤359.11
  - ≤360.82
  - ≤362.53
  - ≤364.24
  - ≤365.95
  - ≤367.66
  - ≤369.37
  - ≤371.08
  - ≤372.79
  - ≤374.50
  - ≤376.21
  - ≤377.92
  - ≤379.63
  - ≤381.34
  - ≤383.05
  - ≤384.76
  - ≤386.47
  - ≤388.18
  - ≤389.89
  - ≤391.60
  - ≤393.31
  - ≤395.02
  - ≤396.73
  - ≤398.44
  - ≤400.15
  - ≤401.86
  - ≤403.57
  - ≤405.28
  - ≤406.99
  - ≤408.70
  - ≤410.41
  - ≤412.12
  - ≤413.83
  - ≤415.54
  - ≤417.25
  - ≤418.96
  - ≤420.67
  - ≤422.38
  - ≤424.09
  - ≤425.80
  - ≤427.51
  - ≤429.22
  - ≤430.93
  - ≤432.64
  - ≤434.35
  - ≤436.06
  - ≤437.77
  - ≤439.48
  - ≤441.19
  - ≤442.90
  - ≤444.61
  - ≤446.32
  - ≤448.03
  - ≤449.74
  - ≤451.45
  - ≤453.16
  - ≤454.87
  - ≤456.58
  - ≤458.29
  - ≤460.00
  - ≤461.71
  - ≤463.42
  - ≤465.13
  - ≤466.84
  - ≤468.55
  - ≤470.26
  - ≤471.97
  - ≤473.68
  - ≤475.39
  - ≤477.10
  - ≤478.81
  - ≤480.52
  - ≤482.23
  - ≤483.94
  - ≤485.65
  - ≤487.36
  - ≤489.07
  - ≤490.78
  - ≤492.49
  - ≤494.20
  - ≤495.91
  - ≤497.62
  - ≤499.33
  - ≤501.04
  - ≤502.75
  - ≤504.46
  - ≤506.17
  - ≤507.88
  - ≤509.59
  - ≤511.30
  - ≤513.01
  - ≤514.72
  - ≤516.43
  - ≤518.14
  - ≤519.85
  - ≤521.56
  - ≤523.27
  - ≤524.98
  - ≤526.69
  - ≤528.40
  - ≤530.11
  - ≤531.82
  - ≤533.53
  - ≤535.24
  - ≤536.95
  - ≤538.66
  - ≤540.37
  - ≤542.08
  - ≤543.79
  - ≤545.50
  - ≤547.21
  - ≤548.92
  - ≤550.63
  - ≤552.34
  - ≤554.05
  - ≤555.76
  - ≤557.47
  - ≤559.18
  - ≤560.89
  - ≤562.60
  - ≤564.31
  - ≤566.02
  - ≤567.73
  - ≤569.44
  - ≤571.15
  - ≤572.86
  - ≤574.57
  - ≤576.28
  - ≤577.99
  - ≤579.70
  - ≤581.41
  - ≤583.12
  - ≤584.83
  - ≤586.54
  - ≤588.25
  - ≤589.96
  - ≤591.67
  - ≤593.38
  - ≤595.09
  - ≤596.80
  - ≤598.51
  - ≤600.22
  - ≤601.93
  - ≤603.64
  - ≤605.35
  - ≤607.06
  - ≤608.77
  - ≤610.48
  - ≤612.19
  - ≤613.90
  - ≤615.61
  - ≤617.32
  - ≤619.03
  - ≤620.74
  - ≤622.45
  - ≤624.16
  - ≤625.87
  - ≤627.58
  - ≤629.29
  - ≤631.00
  - ≤632.71
  - ≤634.42
  - ≤636.13
  - ≤637.84
  - ≤639.55
  - ≤641.26
  - ≤642.97
  - ≤644.68
  - ≤646.39
  - ≤648.10
  - ≤649.81
  - ≤651.52
  - ≤653.23
  - ≤654.94
  - ≤656.65
  - ≤658.36
  - ≤660.07
  - ≤661.78
  - ≤663.49
  - ≤665.20
  - ≤666.91
  - ≤668.62
  - ≤670.33
  - ≤672.04
  - ≤673.75
  - ≤675.46
  - ≤677.17
  - ≤678.88
  - ≤680.59
  - ≤682.30
  - ≤684.01
  - ≤685.72
  - ≤687.43
  - ≤689.14
  - ≤690.85
  - ≤692.56
  - ≤694.27
  - ≤695.98
  - ≤697.69
  - ≤699.40
  - ≤701.11
  - ≤702.82
  - ≤704.53
  - ≤706.24
  - ≤707.95
  - ≤709.66
  - ≤711.37
  - ≤713.08
  - ≤714.79
  - ≤716.50
  - ≤718.21
  - ≤719.92
  - ≤721.63
  - ≤723.34
  - ≤725.05
  - ≤726.76
  - ≤728.47
  - ≤730.18
  - ≤731.89
  - ≤733.60
  - ≤735.31
  - ≤737.02
  - ≤738.73
  - ≤740.44
  - ≤742.15
  - ≤743.86
  - ≤745.57
  - ≤747.28
  - ≤748.99
  - ≤750.70
  - ≤752.41
  - ≤754.12
  - ≤755.83
  - ≤757.54
  - ≤759.25
  - ≤760.96
  - ≤762.67
  - ≤764.38
  - ≤766.09
  - ≤767.80
  - ≤769.51
  - ≤771.22
  - ≤772.93
  - ≤774.64
  - ≤776.35
  - ≤778.06
  - ≤779.77
  - ≤781.48
  - ≤783.19
  - ≤784.90
  - ≤786.61
  - ≤788.32
  - ≤790.03
  - ≤791.74
  - ≤793.45
  - ≤795.16
  - ≤796.87
  - ≤798.58
  - ≤800.29
  - ≤802.00
  - ≤803.71
  - ≤805.42
  - ≤807.13
  - ≤808.84
  - ≤810.55
  - ≤812.26
  - ≤813.97
  - ≤815.68
  - ≤817.39
  - ≤819.10
  - ≤820.81
  - ≤822.52
  - ≤824.23
  - ≤825.94
  - ≤827.65
  - ≤829.36
  - ≤831.07
  - ≤832.78
  - ≤834.49
  - ≤836.20
  - ≤837.91
  - ≤839.62
  - ≤841.33
  - ≤843.04
  - ≤844.75
  - ≤846.46
  - ≤848.17
  - ≤849.88
  - ≤851.59
  - ≤853.30
  - ≤855.01
  - ≤856.72
  - ≤858.43
  - ≤860.14
  - ≤861.85
  - ≤863.56
  - ≤865.27
  - ≤866.98
  - ≤868.69
  - ≤870.40
  - ≤872.11
  - ≤873.82
  - ≤875.53
  - ≤877.24
  - ≤878.95
  - ≤880.66
  - ≤882.37
  - ≤884.08
  - ≤885.79
  - ≤887.50
  - ≤889.21
  - ≤890.92
  - ≤892.63
  - ≤894.34
  - ≤896.05
  - ≤897.76
  - ≤899.47
  - ≤901.18
  - ≤902.89
  - ≤904.60
  - ≤906.31
  - ≤908.02
  - ≤909.73
  - ≤911.44
  - ≤913.15
  - ≤914.86
  - ≤916.57
  - ≤918.28
  - ≤919.99
  - ≤921.70
  - ≤923.41
  - ≤925.12
  - ≤926.83
  - ≤928.54
  - ≤930.25
  - ≤931.96
  - ≤933.67
  - ≤935.38
  - ≤937.09
  - ≤938.80
  - ≤940.51
  - ≤942.22
  - ≤943.93
  - ≤945.64
  - ≤947.35
  - ≤949.06
  - ≤950.77
  - ≤952.48
  - ≤954.19
  - ≤955.90
  - ≤957.61
  - ≤959.32
  - ≤961.03
  - ≤962.74
  - ≤964.45
  - ≤966.16
  - ≤967.87
  - ≤969.58
  - ≤971.29
  - ≤973.00
  - ≤974.71
  - ≤976.42
  - ≤978.13
  - ≤979.84
  - ≤981.55
  - ≤983.26
  - ≤984.97
  - ≤986.68
  - ≤988.39
  - ≤990.10
  - ≤991.81
  - ≤993.52
  - ≤995.23
  - ≤996.94
  - ≤998.65
  - ≤1000.36



# DTAG East

# DTAG West

Work Completed **13.9 Miles**    Work In Progress **10.2 Miles**    Need Mitigation **51.5 Miles**



Daniel LaBarre  
9/22/2022 7:06  
Acres from IR and GPS  
North American 1983 Datum, Lat/Long  
Grid

