
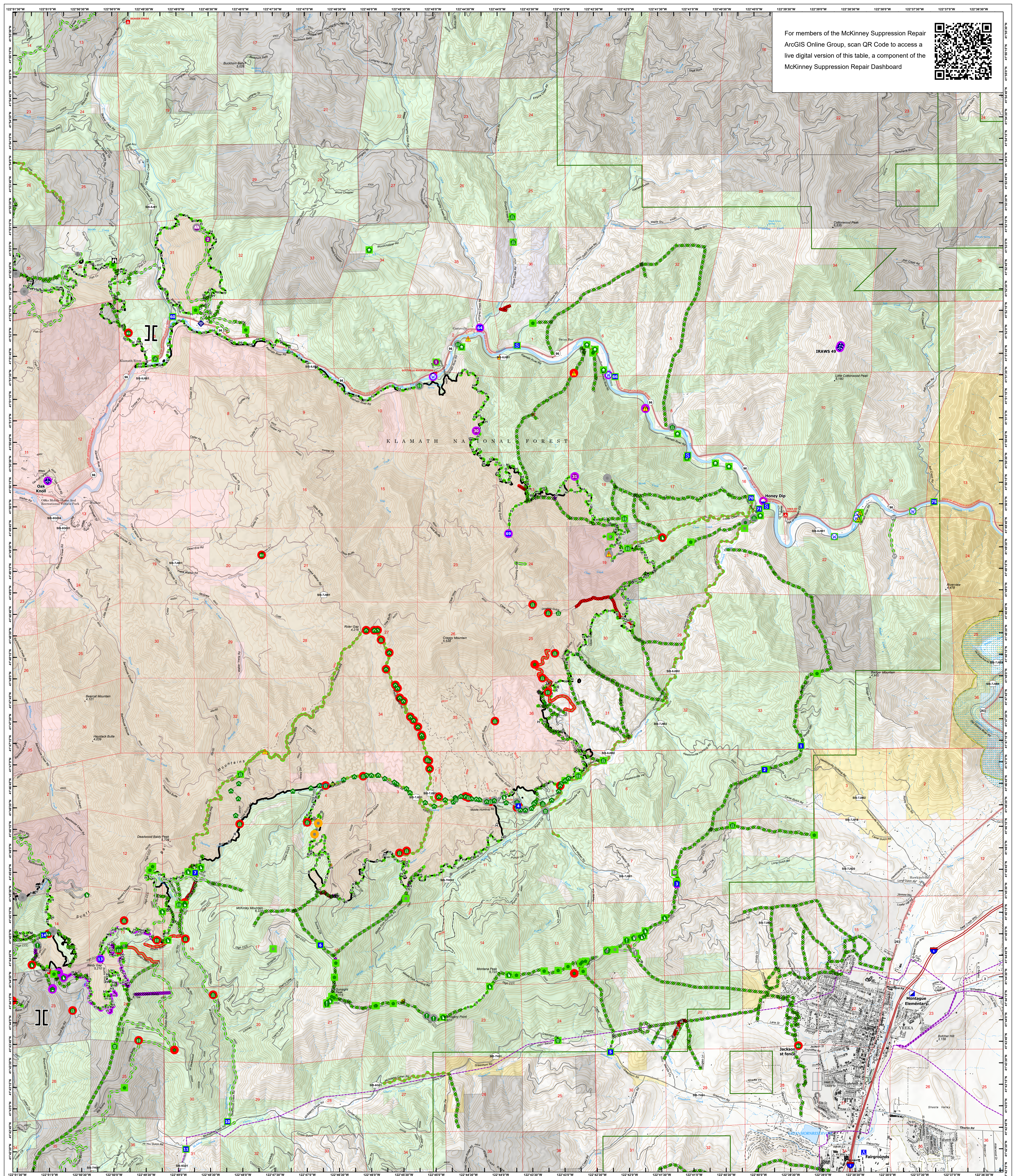


For members of the McKinney Suppression Repair ArcGIS Online Group, scan QR Code to access a live digital version of this table, a component of the McKinney Suppression Repair Dashboard

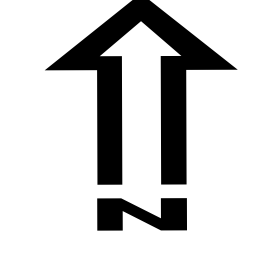
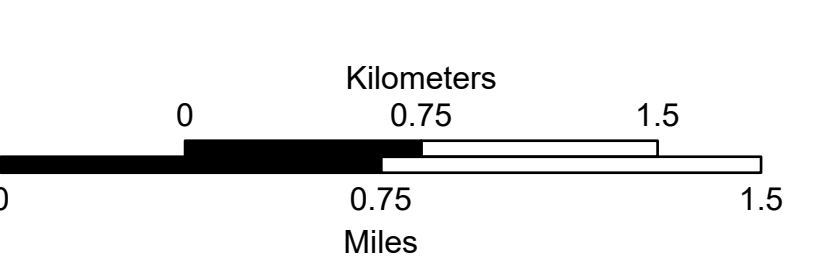

SUPPRESSION REPAIR EAST

McKinney
CA-KNF-006177
09/24/2022
60,138 acres on Effective 8/23/2022

<p>Repair Status - Points</p> <ul style="list-style-type: none"> In Use - Fire Management Needs Assessment Repair Needed In Progress Completed - Ready for Inspection Completed - Inspected Repair Status Lines In Use - Fire Management Needs Assessment Repair Needed In Progress Completed - Ready for Inspection Completed - Inspected Other - See Comments In Use - Fire Management 	<p>Wildfire Daily Fire Perimeter</p> <ul style="list-style-type: none"> Perimeter Line Contained 	<p>Ops Completed</p> <ul style="list-style-type: none"> Completed Doser Line Completed Hand Line Completed Mixed Construction Line Completed Road as Line Reference Access or Improved Road Repair Repair Line Road Repair 	<p>Air Operations</p> <ul style="list-style-type: none"> Dip Site Helispot Sling Site Assignment Breaks Branch Break Logistics Incident Command Post Drop Point Camp Staging Area Operations Lookout Reference Value at Risk Gate Repair Water Development or Draft Site Structure Wrap Stream Crossing Road Repair 	<p>Resource Location</p> <ul style="list-style-type: none"> Repair Point Landing or Log Deck Fence - Cut/Damaged Doser Push Culvert Clean Up Area Communications Mobile Weather Unit Internet Access Safety Safety Zone Hazard Water Source 	<p>Proclaimed FS Boundary</p> <ul style="list-style-type: none"> Forestry Industry Owners Area of Critical Environmental Concern, BLM Wild and Scenic River American Indian Areas, American Indian Reservations
--	---	--	--	---	--

Spatial Reference
Name: NAD 1983 UTM Zone 10N
Datum: North American 1983

Scale: 1:24,000

REPAIR EAST

GISS 9/23/2022 1845