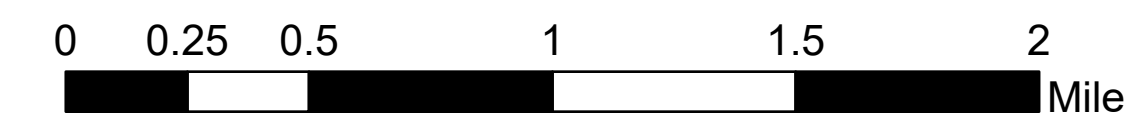


TAG w/Slope

McKinney
CA-KNF-006177
09/24/2022

60,138 acres. Effective 8/23/2022



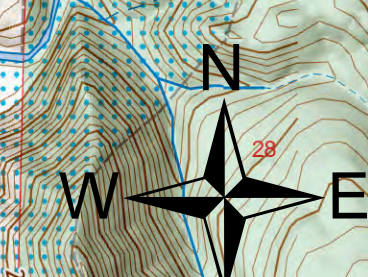
- Landing or Log Deck
 - Unimproved Landing Area
 - Hand Work
 - Machine Work
 - Mixed Hand and Machine
 - No Work Needed
 - TAG Line Status With Priority Labeled
 - Work Completed
 - Needs Mitigation
 - Work In Progress
 - Branch Point
 - Drop Point
- Slope
- ≤1.72
 - ≤3.43
 - ≤5.71
 - ≤8.53
 - ≤11.3
 - ≤14.04
 - ≤16.7
 - ≤21.8
 - ≤30.96
 - ≤45
 - ≤90



DTAG East

DTAG West

Work Completed **13.9 Miles** Work In Progress **10.2 Miles** Need Mitigation **51.5 Miles**



Daniel LaBarre
9/23/2022 7:03
Acres from IR and GPS
North American 1983 Datum LatLong
Grid

