



TAG w/Slope East

McKinney
CA-KNF-006177
09/26/2022

60,138 acres. Effective 8/23/2022



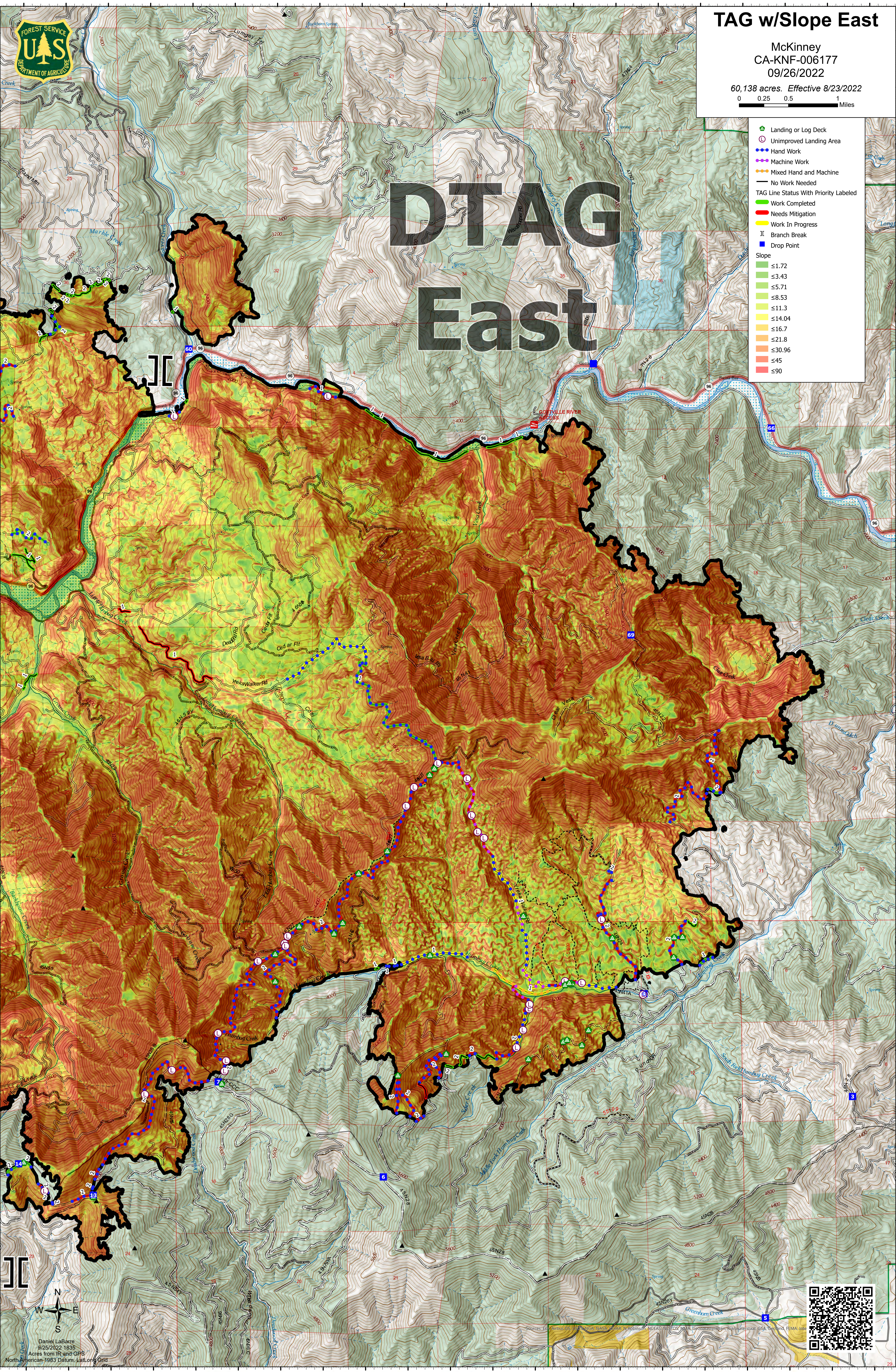
DTAG East

Legend:

- Landing or Log Deck (Green triangle)
- Unimproved Landing Area (Pink circle)
- Hand Work (Blue dashed line)
- Machine Work (Purple dashed line)
- Mixed Hand and Machine (Orange dashed line)
- No Work Needed (Black solid line)
- TAG Line Status With Priority Labeled (Colorful dashed line)
- Work Completed (Green solid line)
- Needs Mitigation (Red solid line)
- Work In Progress (Yellow solid line)
- Branch Break (Black T-junction symbol)
- Drop Point (Blue square)

Slope Legend:

- ≤1.72 (Lightest green)
- ≤3.43 (Light green)
- ≤5.71 (Medium green)
- ≤8.53 (Yellow-green)
- ≤11.3 (Yellow)
- ≤14.04 (Light orange)
- ≤16.7 (Orange)
- ≤21.8 (Dark orange)
- ≤30.96 (Red-orange)
- ≤45 (Red)
- ≤90 (Darkest red)



Daniel LaBarre
9/25/2022 1835
Acres from IR and GPS
North American 1983 Datum, Lat, Long Grid



122°51.01'W 122°50'W 122°49'W 122°48'W 122°47'W 122°46'W 122°45'W 122°44'W 122°43'W 122°42'W 122°41'W

41°55'N 41°54.5'N 41°54'N 41°53.5'N 41°53'N 41°52.5'N 41°52'N 41°51.5'N 41°51'N 41°50.5'N 41°50'N 41°49.5'N 41°49'N 41°48.5'N 41°48'N 41°47.5'N 41°47'N 41°46.5'N 41°46'N 41°45.5'N 41°45'N 41°44.5'N 41°44'N 41°43.5'N