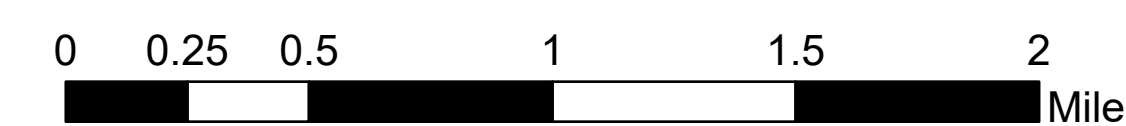


TAG w/Slope

McKinney
CA-KNF-006177
09/29/2022

60,138 acres. Effective 8/23/2022



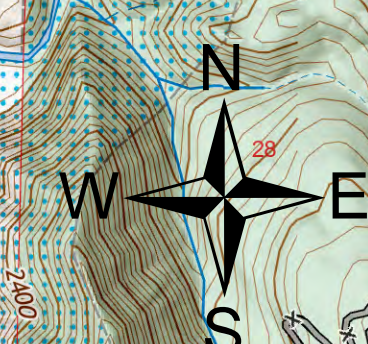
- Landing or Log Deck
- Unimproved Landing Area
- Branch Break
- Drop Point
- Hand Work
- Machine Work
- Mixed Hand and Machine
- No Work Needed
- TAG Feature Status
- Needs Mitigation
- Felling In Progress
- Felling Complete, Processing In Progress
- Work Completed
- Slope
 - ≤1.72
 - ≤3.43
 - ≤5.71
 - ≤8.53
 - ≤11.3
 - ≤14.04
 - ≤16.7
 - ≤21.8
 - ≤30.96
 - ≤45
 - ≥90



DTAG East

DTAG West

Needs Mitigation	Felling In Progress	Processing In Progress	Work Completed
39.1 Miles	3.3 Miles	22.0 Miles	27.4 Miles



Daniel LaBarre
9/28/2022 2059
Acres from IR and GPS
North American 1983 Datum, Lat/Long
Grid

