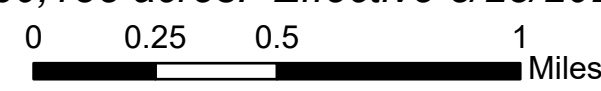




TAG w/Slope East

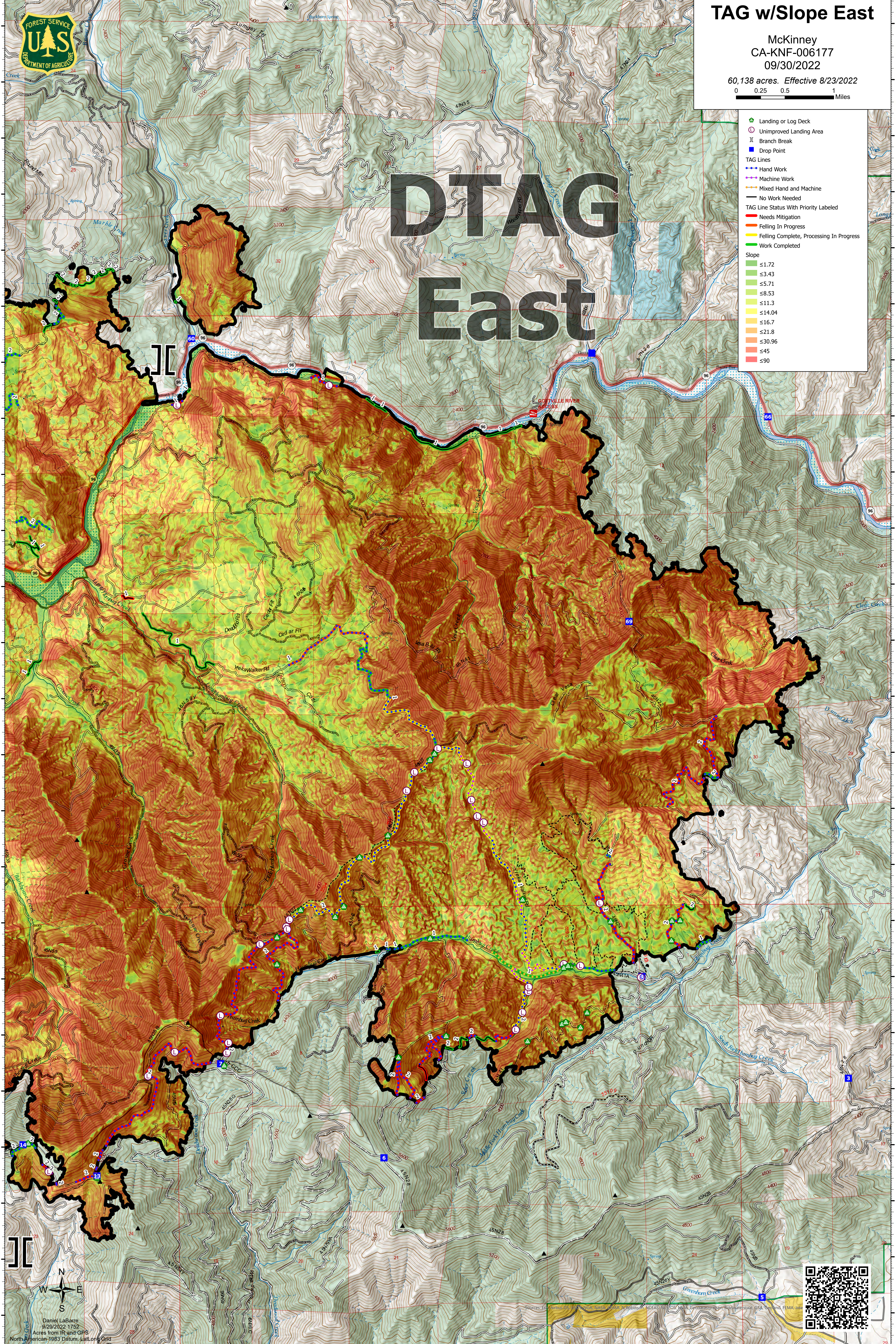
McKinney
CA-KNF-006177
09/30/2022

60,138 acres. Effective 8/23/2022



DTAG East

- Landing or Log Deck
 - Unimproved Landing Area
 - Branch Break
 - Drop Point
 - TAG Lines
 - Hand Work
 - Machine Work
 - Mixed Hand and Machine
 - No Work Needed
 - TAG Line Status With Priority Labeled
 - Needs Mitigation
 - Felling In Progress
 - Felling Complete, Processing In Progress
 - Work Completed
- Slope
- ≤1.72
 - ≤3.43
 - ≤5.71
 - ≤8.53
 - ≤11.3
 - ≤14.04
 - ≤16.7
 - ≤21.8
 - ≤30.96
 - ≤45
 - ≤90



Daniel LaBarre
9/29/2022 1752
Acres from IR and GPS
North American 1983 Datum, Lat/Long Grid



122°51.01'W 122°50'W 122°49'W 122°48'W 122°47'W 122°46'W 122°45'W 122°44'W 122°43'W 122°42'W 122°41'W

41°55'N 41°54.5'N 41°53.99'N 41°53.5'N 41°53'N 41°52.5'N 41°52'N 41°51.5'N 41°51'N 41°50.5'N 41°50'N 41°49.5'N 41°49'N 41°48.5'N 41°48'N 41°47.5'N 41°47'N 41°46.49'N 41°46'N 41°45.5'N 41°45'N 41°44.5'N 41°44'N 41°43.5'N