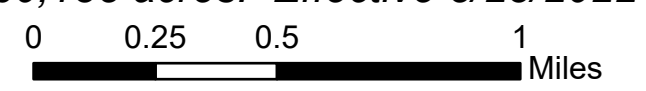




# TAG w/Slope East

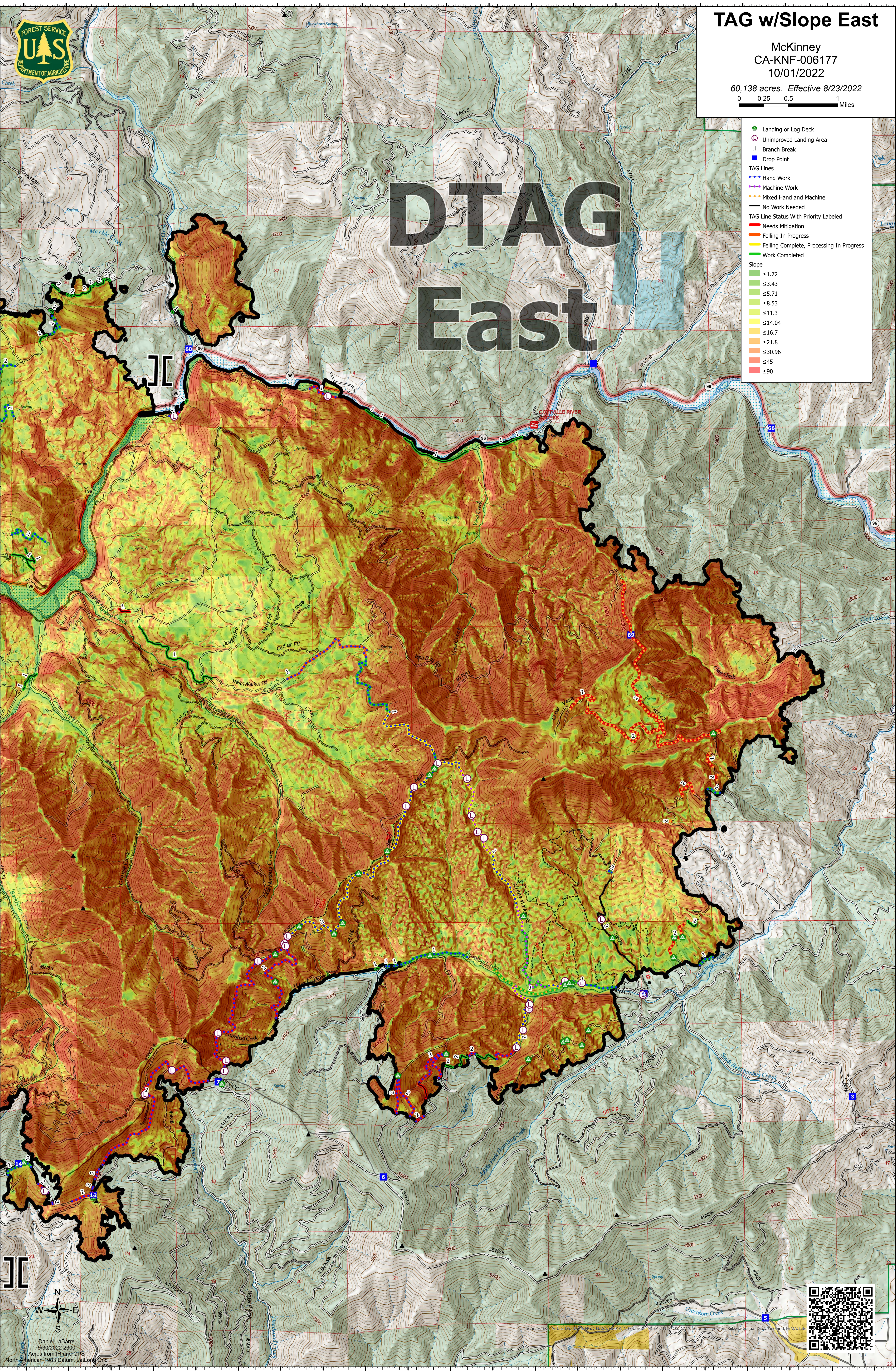
McKinney  
CA-KNF-006177  
10/01/2022

60,138 acres. Effective 8/23/2022



# DTAG East

- Landing or Log Deck
  - Unimproved Landing Area
  - Branch Break
  - Drop Point
  - TAG Lines
  - Hand Work
  - Machine Work
  - Mixed Hand and Machine
  - No Work Needed
  - TAG Line Status With Priority Labeled
  - Needs Mitigation
  - Felling In Progress
  - Felling Complete, Processing In Progress
  - Work Completed
- Slope
- ≤1.72
  - ≤3.43
  - ≤5.71
  - ≤8.53
  - ≤11.3
  - ≤14.04
  - ≤16.7
  - ≤21.8
  - ≤30.96
  - ≤45
  - ≤90



Daniel LaBarre  
9/30/2022 2300  
Acres from IR and GPS  
North American 1983 Datum, Lat/Long Grid

