
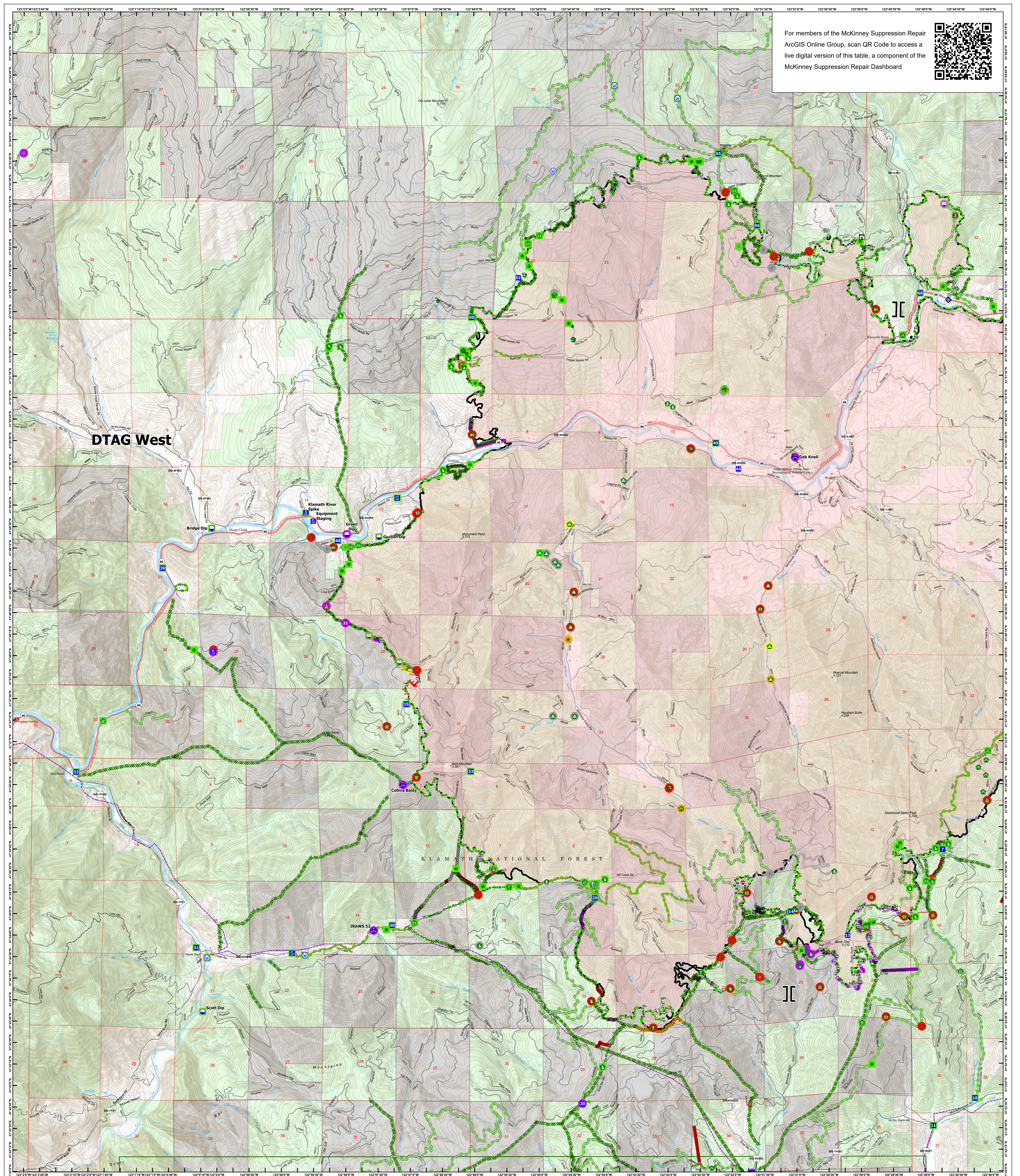


For members of the McKinney Suppression Repair ArcGIS Online Group, scan QR Code to access a live digital version of this table, a component of the McKinney Suppression Repair Dashboard

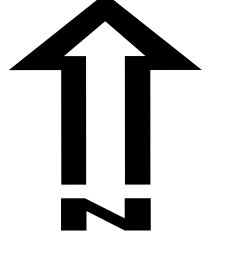
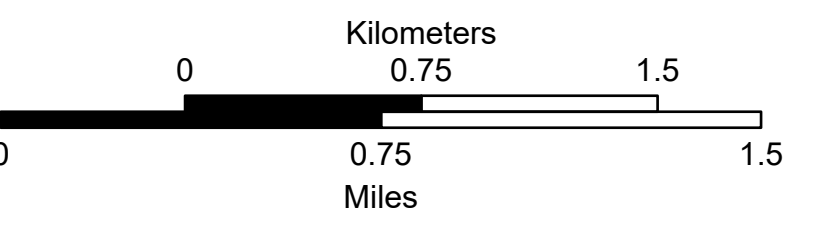

SUPPRESSION REPAIR WEST

McKinney
CA-KNF-006177
10/04/2022
60,138 acres on Effective 8/23/2022

<p>Repair Status: Points</p> <ul style="list-style-type: none"> In Use - Fire Management Needs Assessment Repair Needed In Progress Completed - Ready for Inspection Completed - Inspected Other - See Comments <p>Repair Status: Lines</p> <ul style="list-style-type: none"> In Use - Fire Management Needs Assessment Repair Needed In Progress Completed - Ready for Inspection Completed - Inspected Other - See Comments In Use - Fire Management 	<p>Wildfire Daily Fire Perimeter</p> <ul style="list-style-type: none"> Contained Uncontained 	<p>Ops Completed</p> <ul style="list-style-type: none"> Completed Dozer Line Completed Mixed Construction Line Completed Road as Line <p>Reference</p> <ul style="list-style-type: none"> Access or Improved Road Repair Line Road Repair 	<p>Air Operations</p> <ul style="list-style-type: none"> Dip Site Heligap Sling Site <p>Assignment Breaks</p> <ul style="list-style-type: none"> Branch Break <p>Logistics</p> <ul style="list-style-type: none"> Drop Point Camp Staging Area Operations Lookout <p>Reference</p> <ul style="list-style-type: none"> Value at Risk Other Landmark Gate 	<p>Repair</p> <ul style="list-style-type: none"> Water Development or Draft Site Stream Crossing Road Repair Resource Location Repair Point Landing or Log Deck Hazard Tree Fence - Cut/Damaged Dozer Push Culvert Clean Up Area Communications Mobile Weather Unit Internet Access Safety Safety Zone 	<p>Water</p> <ul style="list-style-type: none"> Water Source Proclaimed FS Boundary Forestry Industry Owners
--	--	---	--	---	--

Spatial Reference
Name: NAD 1983 UTM Zone 10N
Datum: North American 1983

Scale: 1:24,000

REPAIR WEST

GISS 10/3/2022 2041