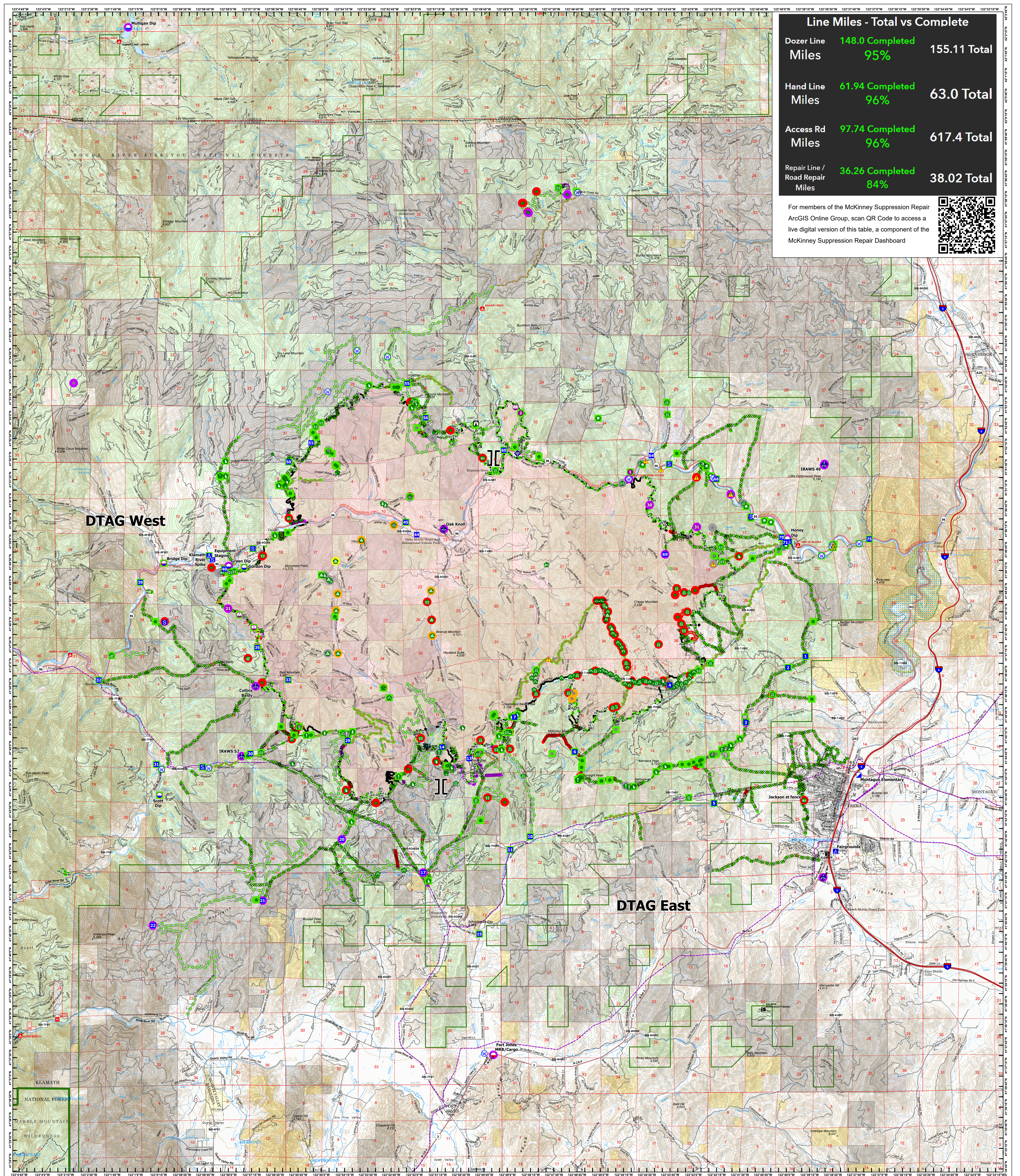


### Line Miles - Total vs Complete

Dozer Line Miles	148.0 Completed 95%	155.11 Total
Hand Line Miles	61.94 Completed 96%	63.0 Total
Access Rd Miles	97.74 Completed 96%	617.4 Total
Repair Line / Road Repair Miles	36.26 Completed 84%	38.02 Total

For members of the McKinney Suppression Repair ArcGIS Online Group, scan QR Code to access a live digital version of this table, a component of the McKinney Suppression Repair Dashboard



# SUPPRESSION REPAIR

McKinney  
CA-KNF-006177  
10/082022  
60,138 acres on Effective 8/23/2022

<p><b>Repair Status Points</b></p> <ul style="list-style-type: none"> <li><span style="color: blue;">●</span> In Use - Fire Management</li> <li><span style="color: red;">●</span> Repair Needed</li> <li><span style="color: orange;">●</span> In Progress</li> <li><span style="color: green;">●</span> Completed - Ready for Inspection</li> <li><span style="color: purple;">●</span> Other - See Comments</li> </ul> <p><b>Repair Status Lines</b></p> <ul style="list-style-type: none"> <li><span style="color: blue;">—</span> In Use - Fire Management</li> <li><span style="color: red;">—</span> Repair Needed</li> <li><span style="color: orange;">—</span> In Progress</li> <li><span style="color: green;">—</span> Completed - Ready for Inspection</li> <li><span style="color: purple;">—</span> Completed - Inspected</li> <li><span style="color: grey;">—</span> Other - See Comments</li> <li><span style="color: pink;">—</span> In Use - Fire Management</li> </ul>	<p><b>Wildfire Daily Perimeter</b></p> <ul style="list-style-type: none"> <li><span style="color: red;">—</span> Contained</li> <li><span style="color: black;">—</span> Uncontained</li> </ul>	<p><b>Ops Completed</b></p> <ul style="list-style-type: none"> <li><span style="color: blue;">—</span> Completed Dozer Line</li> <li><span style="color: green;">—</span> Completed Hand Line</li> <li><span style="color: purple;">—</span> Completed Mixed Construction Line</li> <li><span style="color: red;">—</span> Completed Road as Line</li> <li><span style="color: grey;">—</span> Reference</li> <li><span style="color: black;">—</span> Access or Improved Road</li> </ul> <p><b>Repair</b></p> <ul style="list-style-type: none"> <li><span style="color: blue;">—</span> Repair Line</li> <li><span style="color: orange;">—</span> Road Repair</li> </ul>	<p><b>Air Operations</b></p> <ul style="list-style-type: none"> <li><span style="color: blue;">○</span> Dip Site</li> <li><span style="color: red;">○</span> Mobile Retardant Base</li> <li><span style="color: orange;">○</span> Helispot</li> <li><span style="color: green;">○</span> Sing Site</li> <li><span style="color: purple;">○</span> Assignment Breaks</li> <li><span style="color: black;">○</span> Branch Break</li> </ul> <p><b>Logistics</b></p> <ul style="list-style-type: none"> <li><span style="color: blue;">○</span> Incident Command Post</li> <li><span style="color: red;">○</span> Drop Point</li> <li><span style="color: orange;">○</span> Camp</li> <li><span style="color: green;">○</span> Staging Area</li> </ul> <p><b>Operations</b></p> <ul style="list-style-type: none"> <li><span style="color: blue;">○</span> Lookout</li> <li><span style="color: red;">○</span> Reference</li> <li><span style="color: orange;">○</span> Value at Risk</li> <li><span style="color: green;">○</span> Other</li> <li><span style="color: purple;">○</span> Landmark</li> <li><span style="color: grey;">○</span> Gate</li> </ul> <p><b>Repair</b></p> <ul style="list-style-type: none"> <li><span style="color: blue;">○</span> Water Development or Draft Site</li> <li><span style="color: red;">○</span> Structure Wrap</li> </ul>	<p><b>Stream Crossing</b></p> <ul style="list-style-type: none"> <li><span style="color: blue;">○</span> Road Repair</li> <li><span style="color: red;">○</span> Resource Location</li> <li><span style="color: orange;">○</span> Repair Point</li> <li><span style="color: green;">○</span> Landing or Log Deck</li> <li><span style="color: purple;">○</span> Fence - Cut/Damaged</li> <li><span style="color: black;">○</span> Culvert</li> <li><span style="color: grey;">○</span> Clean Up Area</li> </ul> <p><b>Communications</b></p> <ul style="list-style-type: none"> <li><span style="color: blue;">○</span> Mobile Weather Unit</li> <li><span style="color: red;">○</span> Internet Access</li> </ul> <p><b>Safety</b></p> <ul style="list-style-type: none"> <li><span style="color: blue;">○</span> Safety Zone</li> <li><span style="color: orange;">○</span> Hazard</li> <li><span style="color: green;">○</span> Water</li> <li><span style="color: purple;">○</span> Water Source</li> </ul>	<p><b>Wilderness Boundary</b></p> <ul style="list-style-type: none"> <li><span style="color: blue;">—</span> Proclaimed FS Boundary</li> <li><span style="color: red;">—</span> Resource Location</li> <li><span style="color: orange;">—</span> Wilderness Boundary, BLM</li> <li><span style="color: green;">—</span> Area of Critical Environmental Concern, BLM</li> <li><span style="color: purple;">—</span> Other Designated Boundary</li> <li><span style="color: grey;">—</span> Wild and Scenic River</li> <li><span style="color: black;">—</span> American Indian Areas, American Indian Areas</li> </ul>
---	---	---	---	---	---

Spatial Reference: NAD 1983 UTM Zone 10N  
Datum: North American 1983

Scale: 1:50,000

0 2 4  
Kilometers  
0 2 4  
Miles

SUPPRESSION REPAIR

GISS:diabane 10/7/2022 2037