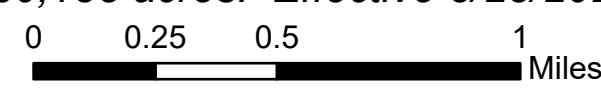




TAG w/Slope East

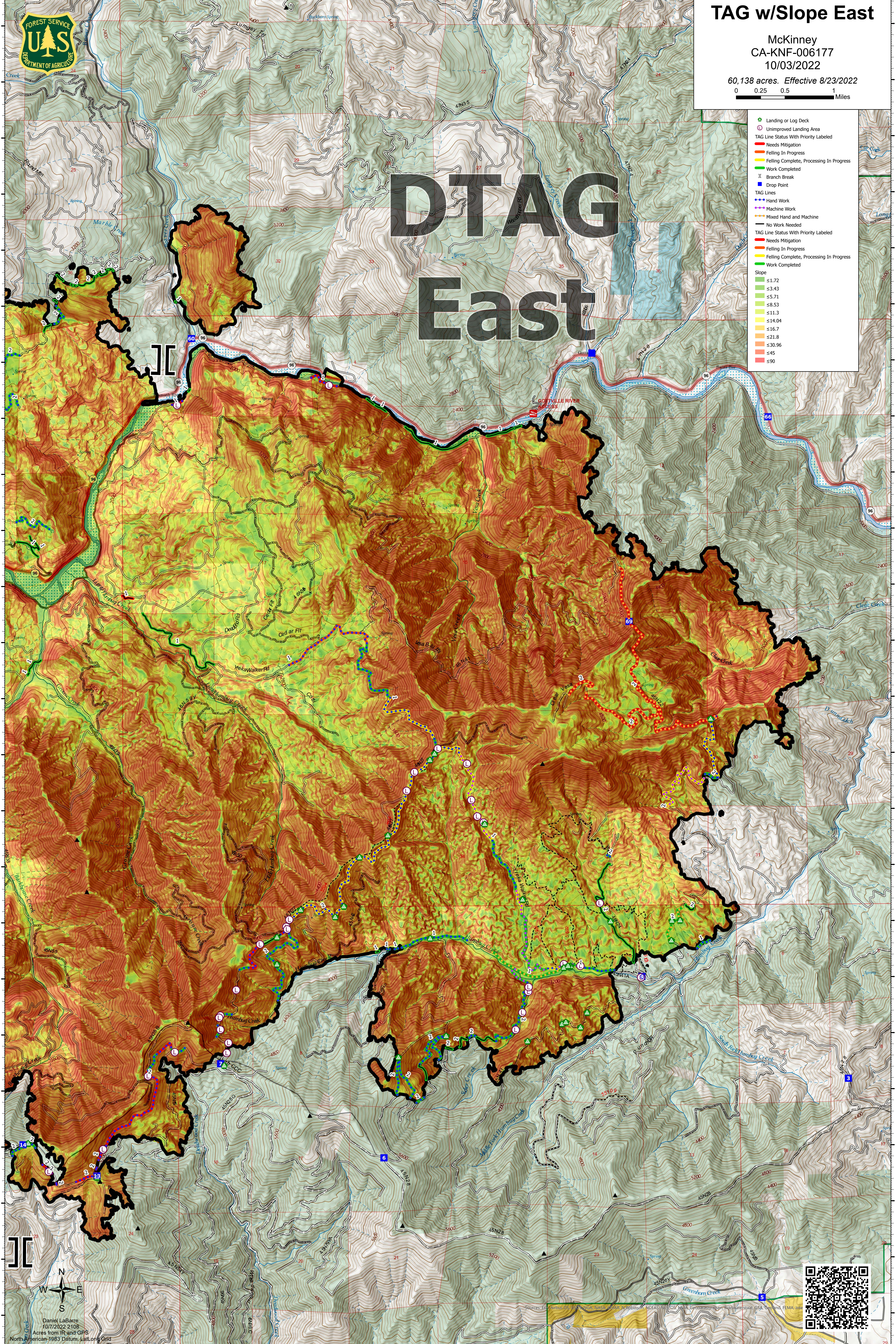
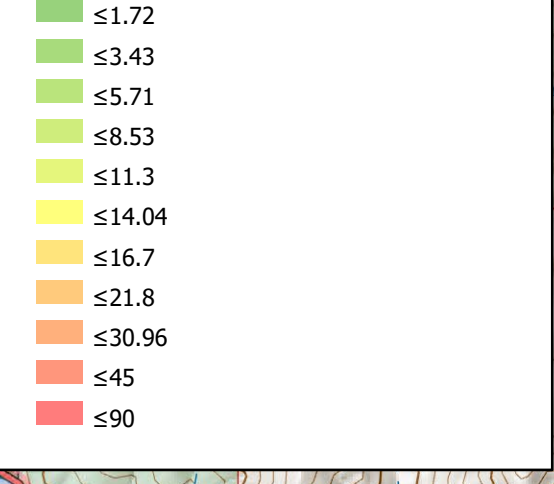
McKinney
CA-KNF-006177
10/03/2022

60,138 acres. Effective 8/23/2022



DTAG East

- Landing or Log Deck
- Unimproved Landing Area
- TAG Line Status With Priority Labeled
- Needs Mitigation
- Felling In Progress
- Felling Complete, Processing In Progress
- Work Completed
- || Branch Break
- Drop Point
- TAG Lines
- Hand Work
- Machine Work
- Mixed Hand and Machine
- No Work Needed
- TAG Line Status With Priority Labeled
- Needs Mitigation
- Felling In Progress
- Felling Complete, Processing In Progress
- Work Completed



Daniel LaBarre
10/7/2022 2:08
Acres from IR and GPS
North American 1983 Datum, Lat/Long Grid



122°51.01'W 122°50'W 122°49'W 122°48'W 122°47'W 122°46'W 122°45'W 122°44'W 122°43'W 122°42'W 122°41'W

41°55'N 41°54.5'N 41°53.99'N 41°53.5'N 41°53'N 41°52.5'N 41°52'N 41°51.5'N 41°51'N 41°50.5'N 41°50'N 41°49.5'N 41°49'N 41°48.5'N 41°48'N 41°47.5'N 41°47'N 41°46.49'N 41°46'N 41°45.5'N 41°45'N 41°44.5'N 41°44'N 41°43.5'N