
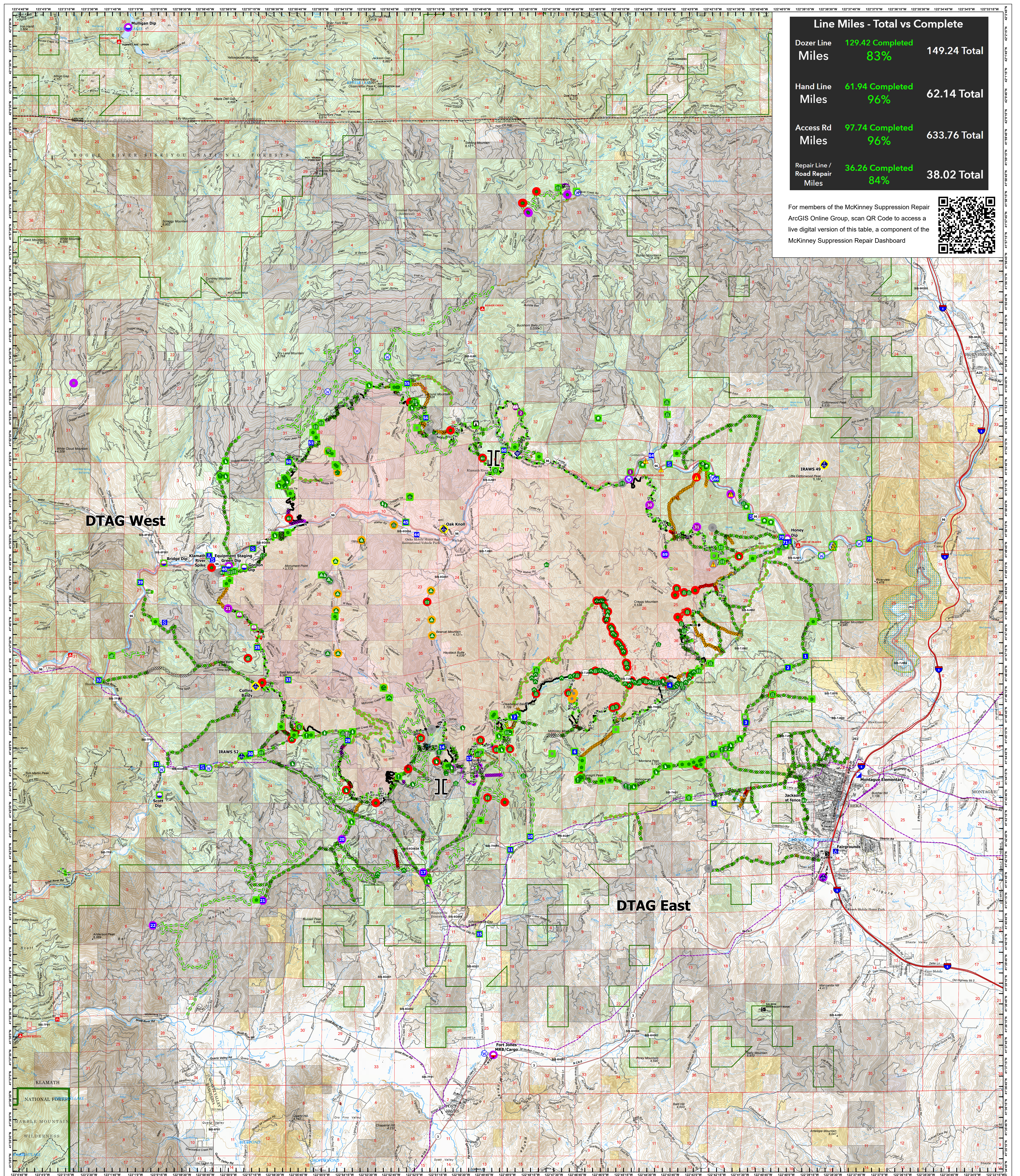


Line Miles - Total vs Complete		
Dozer Line Miles	129.42 Completed 83%	149.24 Total
Hand Line Miles	61.94 Completed 96%	62.14 Total
Access Rd Miles	97.74 Completed 96%	633.76 Total
Repair Line / Road Repair Miles	36.26 Completed 84%	38.02 Total

For members of the McKinney Suppression Repair ArcGIS Online Group, scan QR Code to access a live digital version of this table, a component of the McKinney Suppression Repair Dashboard

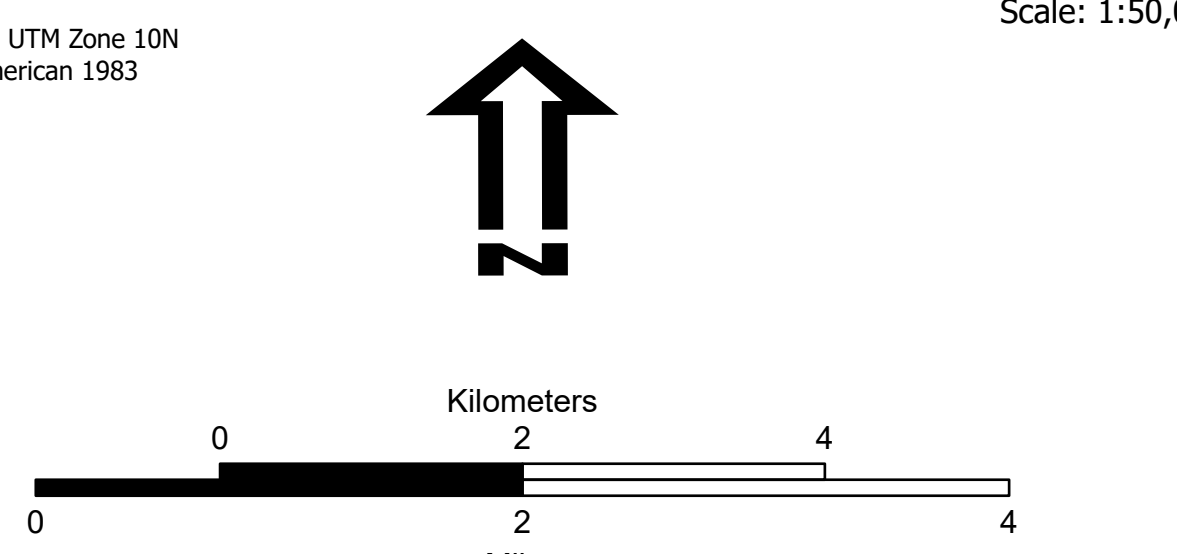

SUPPRESSION REPAIR

McKinney
CA-KNF-006177
10/11/22
60,138 acres on Effective 8/23/2022

<ul style="list-style-type: none"> Repair Status Points In Use - Fire Management Repair Needed In Progress Completed - Ready for Inspection Completed - Inspected Other - See Comments Repair Status Lines In Use - Fire Management Repair Needed In Progress Completed - Ready for Inspection Completed - Inspected Other - See Comments In Use - Fire Management 	<ul style="list-style-type: none"> Wildfire Daily Perimeter Contained Uncontained 	<ul style="list-style-type: none"> Ops Completed Completed Dozer Line Completed Hand Line Completed Mixed Construction Line Completed Road as Line Reference Access or Improved Road Repair Repair Line Road Repair 	<ul style="list-style-type: none"> Air Operations Dip Site Mobile Retardant Base Helispot Staging Area Assignment Breaks Branch Break Logistics Incident Command Post Camp Staging Area Operations Lookout Reference Value at Risk Other Landmark Gate Repair Water Development or Draft Site Structure Wrap 	<ul style="list-style-type: none"> Stream Crossing Road Repair Resource Location Repair Point Landing or Log Deck Fence - Cut/Damaged Dozer Push Culvert Clean Up Area Communications Mobile Weather Unit Internet Access Safety Safety Zone Hazard Water Water Source 	<ul style="list-style-type: none"> FS Wilderness Boundary Proclaimed FS Boundary Resource Location Wilderness Boundary, BLM Area of Critical Environmental Concern, BLM Other Designated Boundary Wild and Scenic River American Indian Areas, American Indian Areas
---	--	---	---	---	--

Spatial Reference
Name: NAD 1983 UTM Zone 10N
Datum: North American 1983

Scale: 1:50,000

SUPPRESSION REPAIR