
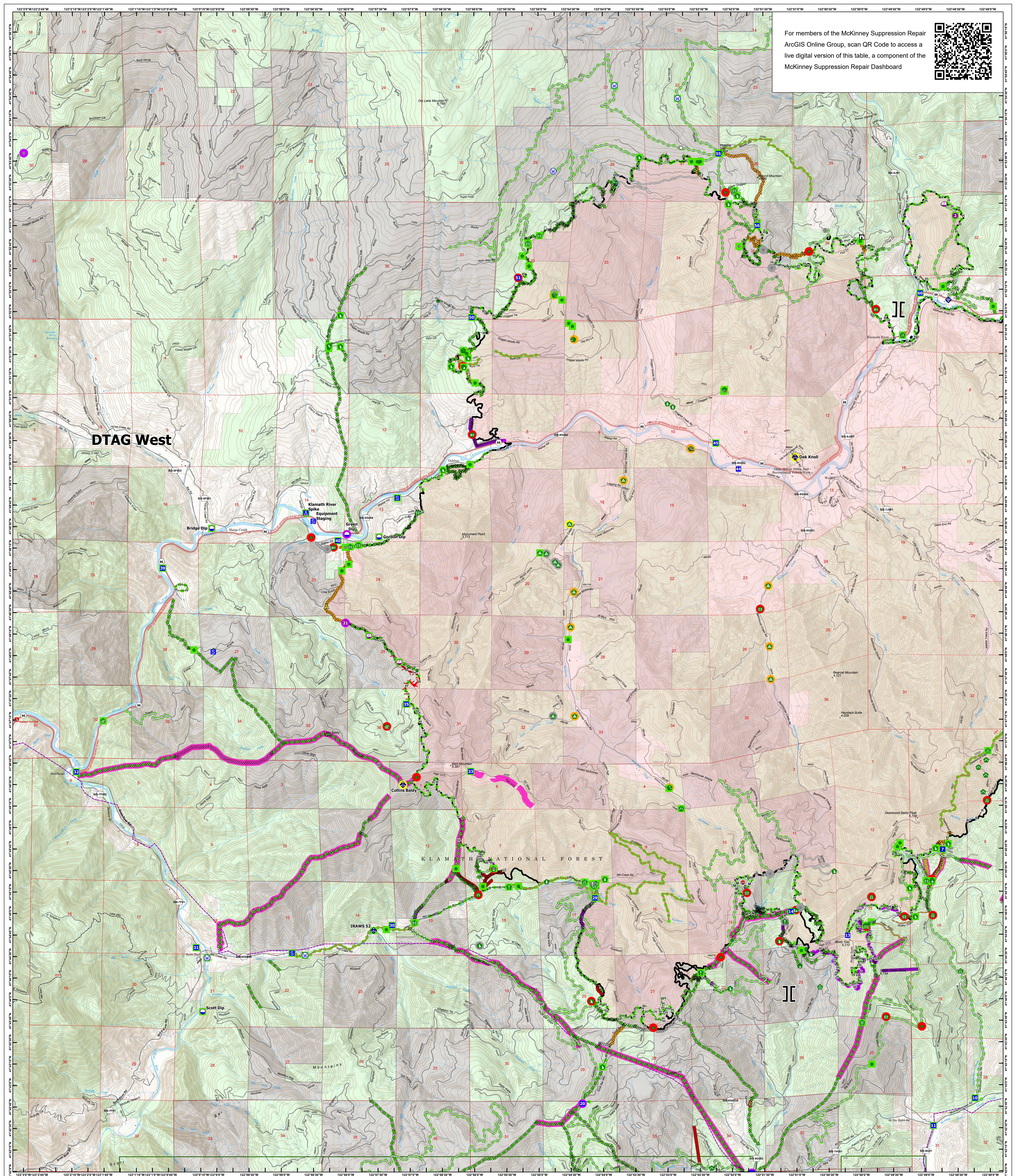


For members of the McKinney Suppression Repair ArcGIS Online Group, scan QR Code to access a live digital version of this table, a component of the McKinney Suppression Repair Dashboard

SUPPRESSION REPAIR WEST

McKinney
CA-KNF-006177
10/12/22
60,138 acres on Effective 8/23/2022

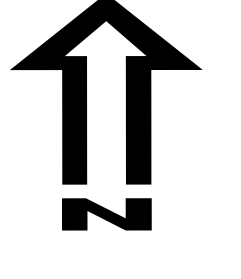

| | | | |
|--|---|---|---|
| <ul style="list-style-type: none"> Repair Status: Points Completed: Green In Progress: Orange Not Started: Red Cancelled: Purple Other: Yellow Cancelled: Light Green Cancelled: Light Orange Cancelled: Light Red Cancelled: Light Purple Cancelled: Light Yellow Cancelled: Light Cyan Cancelled: Light Magenta | <ul style="list-style-type: none"> Line Completed: Green Line In Progress: Orange Line Not Started: Red Line Cancelled: Purple Line Other: Yellow Line Cancelled: Light Green Line Cancelled: Light Orange Line Cancelled: Light Red Line Cancelled: Light Purple Line Cancelled: Light Yellow Line Cancelled: Light Cyan Line Cancelled: Light Magenta | <ul style="list-style-type: none"> Point: Green Point: Orange Point: Red Point: Purple Point: Yellow Point: Light Green Point: Light Orange Point: Light Red Point: Light Purple Point: Light Yellow Point: Light Cyan Point: Light Magenta | <ul style="list-style-type: none"> Boundary: Green Boundary: Orange Boundary: Red Boundary: Purple Boundary: Yellow Boundary: Light Green Boundary: Light Orange Boundary: Light Red Boundary: Light Purple Boundary: Light Yellow Boundary: Light Cyan Boundary: Light Magenta |
|--|---|---|---|

Spatial Reference Name: NAD 1983 UTM Zone 10N Datum: North American 1983

Scale: 1:24,000

Kilometers 0 0.75 1.5

Miles 0 0.75 1.5

REPAIR WEST

GISS 10/11/2022 2007