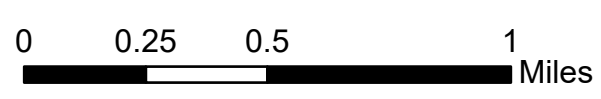


TAG w/Slope West

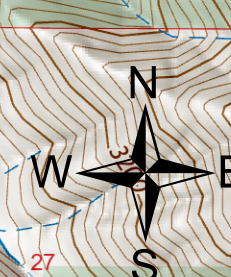
McKinney
CA-KNF-006177
10/26/22

60,138 acres. Effective 8/23/2022



- Landing or Log Deck
 - Unimproved Landing Area
 - TAG Line Status With Priority Labeled
 - Needs Mitigation
 - Felling In Progress
 - Work Complete
 - Branch Break
 - Drop Point
 - TAG Lines
 - Hand Work
 - Machine Work
 - Mixed Hand and Machine
 - No Work Needed
 - TAG Line Status With Priority Labeled
 - Needs Mitigation
 - Felling In Progress
 - Felling Complete, Processing In Progress
 - Work Completed
- Slope
- ≤1.72
 - ≤3.43
 - ≤5.71
 - ≤8.53
 - ≤11.3
 - ≤14.04
 - ≤16.7
 - ≤21.8
 - ≤30.96
 - ≤45
 - ≤90

DTAG West



Daniel LaBarre
10/25/2022 1856
Acres from IEP and GPS
North American 1983 Datum, Lat/Long Grid

