

*** CORRECTED ***

INCIDENT ACTION PLAN MCKINNEY INCIDENT

CA-KNF-006177
P5PX2F (0505)



Saturday



IAP
MAPS
VIRTUAL CHECK-IN
OPS BRIEFING STREAM
FINANCE DOCUMENTS
PIO INFORMATION

OPERATIONAL PERIOD

8/20/2022 0700

to

8/21/2022 0700

INCIDENT OBJECTIVES (ICS 202)

1. Incident Name: McKinney	2. Operational Period: Date From: 8/20/2022 Time From: 0700	Date To: 8/21/2022 Time To: 0700
--------------------------------------	--	-------------------------------------

3. Objective(s):

Leaders Intent
Implement a full suppression strategy on the McKinney Fire. Values at risk include human safety, private timberlands, communities, critical infrastructure and associated improvements. Apply tactics that offer the highest probability of success.

Management Objectives

- Provide for firefighter and public safety through hazard recognition and application of the risk management process.
- Coordinate all public information with CALFIRE and the Klamath National Forest to provide timely and continuous information to affected agency partners, cooperators, and the public.
- Work with Resource Advisors to implement the fire suppression repair plan.
- Provide initial attack capability for the Klamath National Forest on the Oak Knoll and Scott River Ranger Districts.

Leaders Intent
Provide the highest level of customer service to all involved with or impacted by the McKinney Fire. Ensure transparent, timely and accurate communication at all levels of the incident and strengthen relationships with cooperators. All incident assigned personnel should be prepared to take appropriate actions regarding:

- Personal safety and the safety of others, including driving slowly and defensively.
- Fatigue management by taking breaks and maintaining work/rest cycles.
- Limiting exposure to infectious disease by implementing Center of Disease Control, California Department of Public Health, and agency guidelines.
- Professional behavior, and timely/effective communication.

Control Objectives

- Keep the McKinney Fire contained to the current fire perimeter to prevent the fire from spreading to private property, surrounding communities, and other values at risk.

5. Site Safety Plan Required? Yes No

Approved Site Safety Plan(s) Located at:

6. Incident Action Plan

<input checked="" type="checkbox"/> ICS 203	<input checked="" type="checkbox"/> ICS 215A	<input checked="" type="checkbox"/> Line Order Form	<input checked="" type="checkbox"/> READ Message
<input checked="" type="checkbox"/> ICS 204	<input checked="" type="checkbox"/> ICS 220	<input checked="" type="checkbox"/> Training Message	<input checked="" type="checkbox"/> COVID Info
<input checked="" type="checkbox"/> ICS 205	<input checked="" type="checkbox"/> Facility Maps	<input checked="" type="checkbox"/> Travel Map	<input checked="" type="checkbox"/> OES Message
<input checked="" type="checkbox"/> ICS 206	<input checked="" type="checkbox"/> Weather Forecast	<input checked="" type="checkbox"/> Demob Plan	<input checked="" type="checkbox"/> ICS 214
<input checked="" type="checkbox"/> ICS 208	<input checked="" type="checkbox"/> Fire Behavior	<input checked="" type="checkbox"/> Finance Message	<input type="checkbox"/>

7. Prepared By: PSC Position/Title: PSC Signature: Shels Springerstead

8. Approved by Incident Commander: IC Signature: Jim Snow

ICS 202

ORGANIZATION ASSIGNMENT LIST (ICS 203)

1. Incident Name: McKinney		2. Operational Period: Date From: 8/20/2022 Date To: 8/21/2022 Time From: 0700 Time To: 0700	
3. Incident Commander(s) and Command Staff:		7. Operation Section:	
IC/UC's	James Aragon, Jim Snow(t)	Day Operations	John Owings, Jason Flores(t)
Deputy	Alan Taylor	Planning Operations	Chris St. Pierre, JT Sohr(t)
Safety Officer	Paul Tompkins, Shannon Banks	Night Ops	
Information Officer	Mark Thibideau, Stephanie Bishop		
Liaison Officer	Don Smith	Branch	10 Greg Overacker, Rob DeCamp(t)
4. Agency/Organization Representatives:		Division/Group	AZ Chris Scott, Matt Pippin(t)
Klamath NF AADM	Rachel Smith	Division/Group	P/D Rob Noxon, Steve Rushing(t)
Klamath NF AREP	Drew Stroberg	Division/Group	
District Ranger Happy Camp	Roberto Beltran	Division/Group	
Lead Resource Advisor	Joshua Courter	Division/Group	
Cal OES Fire/Rescue	Pat Titus	Branch	20 Rob Szczepanek
Cal OES EM	Robert Goyeneche	Division/Group	Q/R/T/X Phillip Oosahwe
Cal OES LE	Celeste Fowler	Division/Group	REPAIR GROUP Steve Kovacs, Dave Deleon(t)
Cal Trans	Betty Bucher	Division/Group	
Yreka CHP	Stacy Barr	Division/Group	
Siskiyou Sheriff	Jeremiah Larue	Branch	IA Mike Koontz
Yreka PD	Chief Gilman	Division/Group	KLAMATH IA Ed Willy
Timber Representative	Darren Quigley	Division/Group	MONTAGUE STAGING
Board of Supervisors	Ray Haupt	Division/Group	
CCC AREP	Lisa Setzer	Branch	NIGHT
Pacific Power	Tyler Averyt	Division/Group	NIGHT Brian Riley
5. Planning Section:		Division/Group	
Chief	Steve Anderson, Shilo Springstead(t)	Division/Group	
Deputy	Walter Herzog	Division/Group	
Resources Unit	Ryan Resnick, Kelly Smyth(t), John Hamer(t)	Branch	
Situation Unit	Ray Rook, Jeremy Fauskee	Division/Group	
Demob Unit	Janet Grisedale	Division/Group	
HRSP	Adrian Escobedo	Branch	
GISS	Dawn Hutchinson, Eric Ball(t)	Division/Group	
Fire Behavior Analyst	Lauren Blake	Division/Group	
Incident Meteorologist	Terry Lebo, Sam Roberts(t)	Division/Group	
Status Check In	Charlie Hardy(t)	Division/Group	
Training Tech Spec	Dominic Panno	Division/Group	
Info Tech. Support Specialist	Brett Davidson, Daren Howard	Division/Group	
Documentation Unit	Joey Kosiorowski, Robert Wandel	Division/Group	
6. Logistics Section		Air Operations Branch	
Chief	David Alicea	Air Operations	JoAnn Overacker
Deputy Logs	Peter Fitzmaurice, Jim Neumann	Air Tactical Group Supervisor	Derek Wheeler
Ordering Manager	Edward Jensen(t)	Air Support Group Supervisor	
Supply Unit	Patricia Dutrey	Helibase Manager	
Facilities Unit	Arthur Curley		
Security Manager	Cam Gonzalez	8. Finance/Administration Section:	
Ground Support Unit	Chris Syler	Chief	David Dukart
Communications Unit	Chris Perry	Time Unit	Rebecca Lang, Cara Scott
Base Camp Manager	Juan Mota, Joe De La Torre	Equipment Time	Ryan Kirtland(t)
Medical Unit	Gena Fowlkes, Nic Stepanian, Kevin Palm	Personnel Time	Amy VanAtta(t)
Food Unit Leader	Mikeal Gates	Comp/Claims Unit	Debra McClure(t)
		Cost Unit	
		IBA	Jackie Stimach
Prepared By: Name:	PSC	PSC	Signature: <i>Shilo Springstead</i> JIM SNOW
ICS 203	Date/Time:	8/19/2022 2000 hours	NIMS IAP



McKinney Fire Weather Forecast



FORECAST NO: 19
PREDICTION FOR: 0700 Sat Aug 20 - 0700 Sun Aug 21
ISSUED: 2000, Aug 19, 2022

NAME OF FIRE: McKinney
UNIT: Klamath N.F.
Incident Meteorologist: Terry Lebo

Weather Summary

High pressure aloft will strengthen today, increasing temperatures across the area. The high will start to weaken late tonight ahead of an approaching mid-level trough. The trough will bring slightly cooler conditions for Sunday. The trough will also increase the strength and frequency of afternoon and evening wind gusts. The trough will exit the region Monday followed by high pressure aloft and well above normal temperatures returning by the middle of the week.

SATURDAY:

- **WEATHER:** Mostly sunny, hot, dry, unstable, with breezy afternoon winds are expected.
- **WIND (EYE LEVEL):** Sheltered areas: Downslope/down valley 1-3 mph through 1400 then upslope 3-6 mph. Ridges, unsheltered areas, wind-aligned drainages: east 3-6 mph through 1200, then west-northwest 7 to 10 mph gusts to 20 mph through 2000.
- **CHANCE OF WETTING RAIN:** 0%
- **LAL (Lightning Activity Level):** 1
- **RAIN AMOUNTS:** none.
- **MAX TEMPERATURES:** 97-102 lower elevations, 86-91 highest ridgetops.
- **MIN RH:** 8-18% lower elevations, 15-25% ridgetops.
- **INVERSION:** Moderate mid-slope inversion and secondary inversion at 5,000 feet mixing out by 1300. Smoke inversion expected to mix out across most smoked in areas.

SATURDAY NIGHT:

- **WEATHER:** Clear and dry with slightly cooler overnight low temperatures. Moderate RH recovery expected.
- **WIND (20 FT):** Sheltered areas: Downslope/down valley 2-4 mph. Most ridges, unsheltered areas, wind-aligned drainages: out of the west-northwest 4 to 8 mph gusts to 15 mph through 2200, then out of the east 3 to 6 mph late in the night. Ridges above 5000 feet (Collins Baldy), gusts from the west up to 25 mph through 2200, then becoming northeast 5 to 10 mph.
- **CHANCE OF WETTING RAIN:** 0%
- **LAL (Lightning Activity Level):** 1
- **RAIN AMOUNTS:** none.
- **MIN TEMPERATURES:** 55-60 lower elevations, 61-66 in the thermal belt.
- **MAX RH:** 50-65%, 40-55% in the thermal belt.
- **INVERSION:** Moderate to strong developing near mid-slope and secondary inversion at 5,000 feet.

SUNDAY:

- **WEATHER:** Mostly sunny, hot, dry, unstable, with breezy afternoon winds are expected.
- **WIND (EYE LEVEL):** Sheltered and smoked in areas: Downslope/down valley 1-3 mph through 1400 then upslope 3-6 mph. Ridges, unsheltered areas, wind-aligned drainages: east 3-6 mph through 1200, then west-southwest 8 to 12 mph gusts 20-30 mph through 2000.
- **CHANCE OF WETTING RAIN:** 0%
- **RAIN AMOUNTS:** none.
- **MAX TEMPERATURES:** 95-100 lower elevations, 83-89 highest ridgetops.
- **MIN RH:** 10-20% lower elevations, 17-27% ridgetops.
- **INVERSION:** Moderate to strong mid-slope inversion and secondary inversion at 5,000 feet mixes out by 1300. Smoke inversion may not mix out across smoked in areas.

Extended Outlook

Monday: Sunny. Highs 79-96. Minimum humidity: 15-25%. Winds west-northwest 5-10 mph with gusts to 16 mph.
Tuesday: Sunny. Highs 82-100. Minimum humidity: 15-25%. Winds west-northwest 5-10 mph with gusts to 15 mph.
Wednesday: Sunny Highs from 85-105. Minimum humidity: 10-20%. Winds west-northwest 5-10 mph with gusts to 18 mph.

FIRE BEHAVIOR FORECAST

FORECAST NUMBER: 19	TYPE OF FIRE: Wildfire
FIRE NAME: McKinney	OPERATIONAL PERIOD: 8/20-21/2022 (0700-0700)
DATE ISSUED: 8/19/2022	TIME ISSUED: 2000
UNIT: CA-KNF	SIGNED: <i>Lauren Blake</i> Typed/printed: Lauren Blake (FBANT)

INPUTS

WEATHER SUMMARY: **** See Fire Weather Forecast****

High pressure aloft will strengthen today, increasing temperatures across the area. The high will start to weaken late tonight ahead of an approaching mid-level trough. The trough will bring slightly cooler conditions for Sunday. The trough will also increase the strength and frequency of afternoon and evening wind gusts. The trough will exit the region Monday followed by high pressure aloft and well above normal temperatures returning by the middle of the week.

FUELS SUMMARY:

Several years of persistent drought and a water year which has received less than 50% of normal rainfall, has the fire footprint within an area identified as "Extreme Drought". These drought conditions had both the live and dead ground fuels at critically dry levels when the fire ignited on July 29th. The dry fuel conditions and strong erratic winds from nearby thunderstorms, caused extreme fire behavior on the McKinney fire with a high resistance to control during the first several operational periods. Fire conditions improved when a precipitation event occurred on August 2nd, mostly impacting the eastern portion of the fire. Resources have done a great job containing, mopping up, and rehabbing the fire. Fuels and fire danger are back at critical levels as we remain in what is historically the peak of fire season for northern California.

OUTPUTS

FIRE BEHAVIOR

GENERAL:

Heat remains isolated to mainly burning stumps and heavy ground fuel well interior with limited threat to the control lines. The main concern for the next several days will be any new fires that ignited from the lightning but haven't been detected. Be heads up as the sun will back over the area and breezier conditions are forecasted this weekend.

Fire Danger Indices – 2022 IRPG Page 39
Energy Release Component (Oak Knoll): 90th+
August Average ERC Percentile: 70th
Peak Burn Period (1400-1800) - Probability of Ignition (PIG): 85% (shaded), 95% (unshaded)

SPECIFIC:

McKinney Fire: The fire has not experienced perimeter growth for several weeks with the control lines being tested by hot, dry, and windy conditions during that timeframe. The limited heat remaining is concentrated on the western portion on both sides of the Mill Creek Road (Branch X). There will continue to be smokes that pop-up in the afternoon and will need to be evaluated for their threat to the control lines.

Stud/ Tyler Fires- Fuels are drying out from recent rains. Expect increasing fire activity- creeping, smoldering and isolated torching where fire is not contained.

Initial Attack: Northern California and Southern Oregon received 500+ lightning strikes two days ago. Once temperatures warm back-up, there will likely be holdover fires. Local knowledge is critical to navigate the network of roads to make access to any new fires. Lean on the local resources for information, including best travel routes.

AIR OPERATIONS:

Sunrise 0622, Sunset 2003
Moderate mid-slope inversion and secondary inversion at 5,000 feet mixing out by 1300.

SAFETY

New fires are being discovered from recent lightning in the area.... Keep your head up and looking around. Update your LCES regularly.



Health & Safety Message

Incident: McKinney Fire CA-KNF-006177	Date/Op Period: 08/20-21/22 0700-0700
---	---

Hazards & Risks

Driving: Please take into consideration the location of Fire Camp. We are in a residential area and on school grounds. The team has posted speed limit signs around the area of camp and school of 15 MPH. Please adhere to these postings to avoid accidents with the public. The pilot car operation on Hwy 96. The team direction is that all personnel assigned to the fire will fall in with the pilot car escort unless there is a fire or life safety incident. If that is the case, you are to contact CHP to expedite your travel through the operation.

Working around and with Heavy Equipment: Remember the limited visibility of the operator. If you can't see his or her face, chances are they can't see you. So when working directly with Heavy Equipment maintain a safe distance and eye contact. If you are in the area of Heavy Equipment that is working, keep eyes on them and maintain a safe distance. Sometimes radio communications can be challenging with the noise levels in the area so talk with the operator before they start working and have a plan.

Air Operations: With Air Operations over the fire there comes a unique set of hazards and risks. Reference the blue pages in your IRPG. Consider mission need and aviation risk factors. Order the right tool for your needs and establish good communications with the aircraft. Ensure ground personnel are aware of LZs, sling load sites, and retardant/water dropping operations.

Stay Hydrated and take frequent breaks!

Shannon Banks SOF2(t)

L. Lookouts C. Communications E. Escape Routes S. Safety Zones

"Don't count the days make the days count"

Muhammad Ali

INCIDENT RISK ANALYSIS (ICS 215a)

DIV	HAZARDOUS ACTIONS / CONDITIONS	MITIGATIONS / WARNINGS / REMEDIES
ALL	CHAIN SAW AND TREE FELLING OPERATIONS	<ul style="list-style-type: none"> Follow "Hazard Tree Safety" guidelines in the IRPG Look up, Look down, Look around for hazard tree indicators Only fell and buck trees within your expertise and training. Follow "Procedural Felling Operations" Do not fall trees during high wind events. Ensure proper use of all required PPE.
ALL	DRIVING HAZARDS	<ul style="list-style-type: none"> WATCH FOR ROCKS AND WILDLIFE ON HWY 96. Especially from dawn to dusk. DO NOT SKIP AHEAD OF PILOT CAR. Drive defensively! Expect the unexpected around every curve. Drive with headlights on; use chock blocks, keep windshields clean; look before backing; and use backers whenever available.
ALL	STRUCTURE / URBAN INTERMIX HAZARDS	<ul style="list-style-type: none"> Survey burned out structures carefully. Avoid inhaling residue smoke and fumes. Watch for downed powerlines and exposed propane lines. Look for propane tanks and other hazardous materials
ALL	EXTREMELY STEEP TERRAIN AND ROLLING MATERIAL	<ul style="list-style-type: none"> Concentrate on your footing placement; take your time. Ensure adequate spacing between crewmembers so they can react to dislodged debris. Post lookouts to warn of rolling debris. SHOUT out to warn others. Look Up, Down and Around frequently.
ALL	HAZARD TREES	<ul style="list-style-type: none"> Follow Hazard Tree Safety Guidelines (IRPG p. 22). Be especially alert around snags during wind events or changing wind direction. Check for hazard trees & "widow-makers" in sleeping areas.
ALL	HAZARDOUS WEATHER	<ul style="list-style-type: none"> Watch for slick roads, poor traction, and poor braking conditions. Establish "Trigger Points" to withdraw, and ensure all know rally site Take shelter during lightning, thunderstorm or flash flood events. Move to pavement and high ground with rain event.
ALL	NIGHT OPERATIONS	<ul style="list-style-type: none"> Have a purpose for where you drive, what you do, don't rush into assignments Use caution where you park/stage especially in steep timbered areas. Increase SA by trying to see the work areas during daylight hours
ALL	INFECTIOUS DISEASE	<ul style="list-style-type: none"> Maintain 6' foot distance whenever possible. Wear masks when appropriate. Do frequent handwashing/sanitizing and disinfecting common surfaces. Notify MEDL if any symptoms arise.
ALL	HEAVY EQUIPMENT/DOZERS	<ul style="list-style-type: none"> Utilize appropriate PPE and other equipment safety mechanisms. Maintain safe working distances. Utilize observer or spotter. Avoid moving parts Ensure the use of effective communication (radio, hand signals). Identify hazards.
ALL	SUPPRESSION REPAIR	<ul style="list-style-type: none"> Scout out your work area and identify hazards prior to working. Watch for steep terrain and rolling materials that may be kicked loose by others working in the area. Avoid working in proximity to heavy equipment. Monitor personnel for heat related illness; stay hydrated and take frequent rest breaks.
ALL	INITIAL ATTACK OPERATIONS	<ul style="list-style-type: none"> Give size up, establish command and give location. Expect rapid ROS when winds are present Ensure LCES is in place. Use caution when unburned fuels are between you and the fire.
ALL	HEAT RELATED ILLNESS (HRI) / DEHYDRATION & FATIGUE	<ul style="list-style-type: none"> Drink 2: 1 water to sports drinks. Maintain 2:1 work/rest ratio Take frequent breaks, minimum of 10 minutes every hour. Recognize symptoms of HEAT RELATED ILLNESS (IRPG P.110)
INCIDENT NAME: MCKINNEY ICS 215a		DATE PREPARED: 8/19/2022 TIME PREPARED: 1600 hrs.
Prepared by: Paul Tompkins		

ASSIGNMENT LIST (ICS 204 WF)

CONTROLLED UNCLASSIFIED
INFORMATION//BASIC

1. Incident Name: <p style="text-align: center; font-weight: bold;">McKinney</p>	2. Operational Period: Date From: 08/20/22 Date To: 08/21/22 Time From: 0700 Time To: 0700	3. Branch Division <p style="text-align: center; font-weight: bold;">10 A/Z</p> <p style="text-align: center;">Page 1 of 1 Alpha/Zulu</p>
--	---	--

4. Operations Personnel:	
Operations Section Chief: John Owings, Jason Flores(t)	Night Ops:
Branch Director: Greg Overacker, Rob DeCamp(t)	Branch Safety: Troy Maguire, Matthew Hutchinson(t)
Division/Group Supervisor: Chris Scott, Matt Pippin(t)	Air Attack: Derek Wheeler

5. Resources Assigned:		** Resources Below in Bold are 12 Hour **				
Resource Identifier	LWD	Leader	Personnel	Request #	Hours	Reporting Location
ENG3 OAK CREEK	8/20	Benjamin Giaus	8	E-289	0700-1900	Klamath River Spike
ENG3 ROCKY POINT 223	8/20	Dusty Krebsbach	3	E-303	0700-1900	Klamath River Spike
ENG3 J3 CONTRACTING 390	8/27	Meshel Rad	3	E-390	0700-1900	Klamath River Spike
ENG6 NM-CAF 621	8/21	Rebecca Elmore	4	E-291	0700-1900	Klamath River Spike
*ENG6 WASATCH BRUSH 53	8/24	Robert Denning	2	E-386	0700-1900	Klamath River Spike
WTS2 EASLEY	8/31	Dave Jones	2	E-193	0700-0700	Klamath River Spike
FMOD MOEN	8/20	Darwin Saxon	2	O-450	0700-1900	Klamath River Spike
TFLD KEIPER	8/20	Steve Keiper	1	O-261	0700-1900	Klamath River Spike
EMPF OZBIRN	8/24	Shane Ozbirn	1	O-523	0700-1900	Klamath River Spike
EMPF(t) SMITH	8/24	Michael Smith	1	O-517	0700-1900	Klamath River Spike
AMBU ADVENTURE MEDICS 1	8/22	Sadie Douville	2	E-138	0700-1900	Klamath River Spike
AMBU 3 ADVENTURE MEDICS	8/30	Andrew Sorrells	2	E-140	0700-1900	Klamath River Spike
ENG3 xTreme Wildland	9/2	Michael Campanano	3	E-408	0700-1900	Klamath River Spike
HC2 NORTH PACIFIC	8/20	William Blackeraw	20	C-78	"	"
HC2 ALTA PACIFIC	8/31	Jose Silva	20	C-117	"	"
ENG3 J3 CONTRACTING	8/21	Eric Nahoe	3	E-306	"	"
ENG3 J3 CONTRACTING	8/21	Anthony Tenzalia	3	E-398	"	"

6. Work Assignments: *Collias Baldy 7*

- Actively patrol line between ~~Bald Mountain~~ and DP-20
- Mop-up along fire edge to the extent that escape is improbable.
- Perform fire suppression operations and patrol on IA fires.

7. Special Instructions:

- READS will check in and out with DIVS.
- * Denotes resource available for initial attack.
- ** Emergency response logistics AMBO 6 available from Klamath River Spike**
- BAER teams will be conducting assessments within divisions.

8. Communications							
Name	Ch	Function	Rx Freq	Rx Tone	Tx Freq	Tx Tone	Notes
NIFC C12	2	COMMAND	173.0375	T5-146.2	167.3250	T5-146.2	Tom Martin Pk
NIFC T5	7	TACTICAL	166.7250	T5-146.2	166.7250	T5-146.2	
A/G TAC	14	A/G TAC	167.0625	none	167.0625	none	
CALCORD	15	MEDICAL	156.0750	T6-156.7	156.0750	T6-156.7	Air Ambulance
AIRGUARD	16	AIRGUARD	168.6250	none	168.6250	T1-110.9	<Emergency Use Only>

9. Prepared by: Name: RESL RESL Signature: *KJ*

ICS 204 Date/Time: 8/19/2022 2200 Personnel Count: 31

ASSIGNMENT LIST (ICS 204 WF)

CONTROLLED UNCLASSIFIED
INFORMATION//BASIC

1. Incident Name: <p style="text-align: center; font-weight: bold;">McKinney</p>	2. Operational Period: Date From: 08/20/22 Date To: 08/21/22 Time From: 0700 Time To: 0700	3. Branch Division <p style="text-align: center; font-size: 1.2em; font-weight: bold;">10 P/D</p>
--	---	---

4. Operations Personnel:		Page 1 of 2 Papa/Delta
Operations Section Chief: John Owings, Jason Flores(t)	Night Ops:	
Branch Director: Greg Overacker, Rob DeCamp(t)	Branch Safety: Troy Maguire, Matthew Hutchinson(t)	
Division/Group Supervisor: Rob Noxon, Steve Rushing(t)	Air Attack: Derek Wheeler	

5. Resources Assigned:		** Resources Below in Bold are 12 Hour **				
Resource Identifier	LWD	Leader	Personnel	Request #	Hours	Reporting Location
HC2 MR CONTRACTING	8/31	Tomas Guzman	20	C-114	0700-1900	Klamath River Spike
HC2 ALTA PACIFIC	8/31	Jose Silva	20	C-117	0700-1900	Klamath River Spike
CRW2 GRAYBACK 13	8/31	Kristopher Gilliland	20	C-115	0700-1900	Klamath River Spike
*STC BDF 6605C	8/25	Ray Hernandez	27	E-351	0700-0700	Klamath River Spike
ENG3 PVT J3 CONTRACTING	8/21	Eric Nahee	3	E-306	0700-1900	Klamath River Spike
ENG3 NV-WID #2311	8/28	Kyle Osborne	3	E-389	0700-1900	Klamath River Spike
ENG3 J3 CONTRACTING 398	8/21	Anthony Tensalia	3	E-398	0700-1900	Klamath River Spike
ENG6 PACIFIC OASIS 70	8/30	Kenneth Wilson	3	E-385	0700-1900	Klamath River Spike
*ENG6 GCP 811	8/20	Justin Doyle	3	E-288	0700-1900	Klamath River Spike
ENG6 ROCK CREEK	8/20	Tyler Muegerl	3	E-290	0700-1900	Klamath River Spike
ENG6 BRUSH 192	8/20	Lance Wollabaek	3	E-304	0700-1900	Klamath River Spike
*ENG6 PARA-CORP 703	8/22	Reid Troxel	3	E-387	0700-1900	Klamath River Spike
*DO22 PVT SPRATT	8/31	Tyler Hanna	2	E-231	0700-1900	Klamath River Spike
WTS1 PVT PRECISION	8/29	Mike Dainauskus	1	E-20	0700-1900	Klamath River Spike
WTS2 WHITE LOGGING	8/28	Tom White	1	E-22	0700-1900	Klamath River Spike
WTS2 PVT HANNA	8/31	Clayton Cash	2	E-192	0700-1900	Klamath River Spike
WTS2 JOHNSON 276	8/28	Trevor Fieck	1	E-276	0700-1900	Klamath River Spike
FMOD NORTH ZONE O-439	8/25	Mike Lee	2	O-439	0700-1900	Klamath River Spike

A/2 ←

A/2 ←

A/2 ←

6. Work Assignments:

- Actively patrol and secure lines between Bald Mountain and Round Mountain.
- Mop-up along fire edge to the extent that escape is improbable.
- Perform fire suppression operations and patrol on IA fires.

7. Special Instructions:

- READs will check in and out with DIVS.
- * Denotes resource available for initial attack.
- ** Emergency response logistics AMBO 6 available from Klamath River Spike**
- BAER teams will be conducting assessments within divisions.

8. Communications

Name	Ch	Function	Rx Freq	Rx Tone	Tx Freq	Tx Tone	Notes
NIFC C12	2	COMMAND	173.0375	T5-146.2	167.3250	T5-146.2	Tom Martin Pk
NIFC C52	4	COMMAND	171.0875	T5-146.2	164.6000	T5-146.2	Bald Mtn
NIFC T6	8	TACTICAL	166.7750	T5-146.2	166.7750	T5-146.2	Night Div Tac
A/G TAC	14	A/G TAC	167.0625	none	167.0625	none	
CALCORD	15	MEDICAL	156.0750	T6-156.7	156.0750	T6-156.7	Air Ambulance
AIRGUARD	16	AIRGUARD	168.6250	none	168.6250	T1-110.9	<Emergency Use Only>

9. Prepared by: Name: RESL RESL

Signature: Personnel Count: 120

ICS 204 Date/Time: 8/19/2022 2200

NIMS IAP

CONTROLLED UNCLASSIFIED INFORMATION//BASIC

ASSIGNMENT LIST (ICS 204 WF)

CONTROLLED UNCLASSIFIED
INFORMATION/BASIC

1. Incident Name: <p style="text-align: center; font-size: 1.2em;">McKinney</p>		2. Operational Period: Date From: 08/20/22 Date To: 08/21/22 Time From: 0700 Time To: 0700				3. Branch <p style="text-align: center; font-size: 1.5em;">10</p>		Division <p style="text-align: center; font-size: 1.5em;">P/D</p>		
4. Operations Personnel:						Page 2 of 2		Papa/Delta		
Operations Section Chief: John Owings, Jason Flores(t)				Night Ops:						
Branch Director: Greg Overacker, Rob DeCamp(t)				Branch Safety: Troy Maguire, Matthew Hutchinson(t)						
Division/Group Supervisor: Rob Noxon, Steve Rushing(t)				Air Attack: Derek Wheeler						
5. Resources Assigned:		** Resources Below in Bold are 12 Hour **								
Resource Identifier	LWD	Leader	Personnel	Request #	Hours	Reporting Location				
FMOD NORTH ZONE O-441	8/21	Levi Brown	2	O-441	0700-1900	Klamath River Spike				
FMOD NORTH ZONE O-446	8/22	George Peterson	2	O-446	0700-1900	Klamath River Spike				
FMOD PACIFIC RIDGELINE O-447	8/21	Sergio Suto	2	O-447	0700-1900	Klamath River Spike				
FMOD QUINNS HOMELAND	8/21	Allen Ingersoll	2	O-448	0700-1900	Klamath River Spike				
FMOD LONE PINE	8/20	Randy Bell	2	O-449	0700-1900	Klamath River Spike				
STEN HUSKINS	8/22	Alan Huskins	1	O-472	0700-1900	Klamath River Spike				
TFLD WEST	8/27	Randall West	1	O-367	0700-1900	Klamath River Spike				
HEQB CROW	8/26	Kyle Crow	1	O-547	0700-1900	Klamath River Spike				
UTV	8/27	Phillip Ooshawe	1	E-274	0700-1900	Klamath River Spike				
EMPF HAMMORTREE	8/27	James Hammortree	1	O-522	0700-1900	Klamath River Spike				
EMPF AVIS	8/24	Avis, Ben	1	O-514	0700-1900	Klamath River Spike				
EMTF PLOUFFE	8/25	Calen Plouffe	1	O-532	0700-1900	Klamath River Spike				
EMTF OLSON	8/27	Michael Olson	1	O-531	0700-1900	Klamath River Spike				
REMS 4 BENNETT	8/26	Koeby Bennett	4	E-302	0700-1900	Klamath River Spike				
AMBU ADVENTURE MEDICS 2	8/31	Rafael Ruiz	2	E-139	0700-1900	Klamath River Spike				
6. Work Assignments:										
<ul style="list-style-type: none"> - Actively patrol and secure lines between Bald Mountain and Round Mountain. - Mop-up along fire edge to the extent that escape is improbable. - Perform fire suppression operations and patrol on IA fires. 										
7. Special Instructions:										
<ul style="list-style-type: none"> - READs will check in and out with DIVS. - * Denotes resource available for initial attack. ** Emergency response logistics AMBO 6 available from Klamath River Spike** - BAER teams will be conducting assessments within divisions. 										
8. Communications										
Name	Ch	Function	Rx Freq	Rx Tone	Tx Freq	Tx Tone	Notes			
NIFC C12	2	COMMAND	173.0375	T5-146.2	167.3250	T5-146.2	Tom Martin Pk			
NIFC C52	4	COMMAND	171.0875	T5-146.2	164.6000	T5-146.2	Bald Mtn			
NIFC T6	8	TACTICAL	166.7750	T5-146.2	166.7750	T5-146.2	Night Div Tac			
A/G TAC	14	A/G TAC	167.0625	none	167.0625	none				
CALCORD	15	MEDICAL	156.0750	T6-156.7	156.0750	T6-156.7	Air Ambulance			
AIRGUARD	16	AIRGUARD	168.6250	none	168.6250	T1-110.9	<Emergency Use Only>			
9. Prepared by: Name:		RESL			RESL			Signature:		
ICS 204		Date/Time: 8/19/2022			2200			Personnel Count: 24		

NIMS IAP

CONTROLLED UNCLASSIFIED INFORMATION/BASIC

ASSIGNMENT LIST (ICS 204 WF)

CONTROLLED UNCLASSIFIED
INFORMATION//BASIC

1. Incident Name: <p style="text-align: center; font-size: 1.2em;">McKinney</p>	2. Operational Period: Date From: 08/20/22 Date To: 08/21/22 Time From: 0700 Time To: 0700	3. Branch Division <p style="text-align: center; font-size: 1.2em;">20 Q/R/T/X</p>
---	---	--

4. Operations Personnel:		Page 1 of 1
Operations Section Chief: John Owings, Jason Flores(t)	Night Ops:	
Branch Director: Rob Szczepanek	Branch Safety: Don Fullmer, Ray Miller	
Division/Group Supervisor: Phillip Oosahwe	Air Attack: Derek Wheeler	

5. Resources Assigned:	** Resources Below in Bold are 12 Hour **					
Resource Identifier	LWD	Leader	Personnel	Request #	Hours	Reporting Location
*STC LPF 1651C	8/25	Larry Alvarado	2728	E-370	0700-1900	Montague Camp
ENG6 MOUNT ADAMS 622	8/22	Eric Randolph	3	E-388	0700-1900	Montague Camp
ENG6 AZASF 662	8/25	Andrew Zimmerman	6	E-372	0700-1900	Montague Camp
*WTS2 JOHNSON 104	8/28	Steve Boerman	1	E-104	0700-1900	Montague Camp
FMOD PVT UNDERDOG FALLING	8/20	Randy Collins	2	O-442	0700-1900	Montague Camp
EMPF SCHMIER	8/20	Randal Schmier	1	O-406	0700-1900	Montague Camp
EMPF MACALPINE	8/20	Luke Macalpine	1	O-408	0700-1900	Montague Camp
EMTF BAKER	8/26	Matt Baker	1	O-527	0700-1900	Montague Camp
EMPF KENYON	8/21	Jacob Kenyon	1	O-407	0700-1900	Montague Camp
EMTF PASCOLLA	8/27	Cory Pascolla	1	O-533	0700-1900	Montague Camp
AMBU MOUNTAIN MEDICS 4	8/26	Skylar Bainbridge	1	E-37	0700-0700	Montague Camp
REMS 3	8/26	Kat Dougherty	4	E-286	0700-0700	Montague Camp

Repair ←
Group ←

6. Work Assignments:

- Actively patrol and secure lines between Round Mountain and DP-70.
- Mop-up along fire edge to the extent that escape is improbable.
- Perform fire suppression operations and patrol on IA fires.

7. Special Instructions:

- READs will check in and out with DIVS.
- * Denotes resource available for initial attack.
- ** Emergency response logistics AMBO 6 available from Klamath River Spike**
- BAER teams will be conducting assessments within divisions.

8. Communications

Name	Ch	Function	Rx Freq	Rx Tone	Tx Freq	Tx Tone	Notes
NIFC C5	1	COMMAND	169.7500	T5-146.2	167.1000	T5-146.2	Buckhorn Bally LO
NIFC T7	9	TACTICAL	168.2500	T5-146.2	168.2500	T5-146.2	
A/G TAC	14	A/G TAC	167.0625	none	167.0625	none	
CALCORD	15	MEDICAL	156.0750	T6-156.7	156.0750	T6-156.7	Air Ambulance
AIRGUARD	16	AIRGUARD	168.6250	none	168.6250	T1-110.9	<Emergency Use Only>

9. Prepared by: Name: RESL RESL

Signature: _____

ICS 204 Date/Time: 8/19/2022 2200 Personnel Count: 49

NIMS IAP

CONTROLLED UNCLASSIFIED INFORMATION//BASIC

ASSIGNMENT LIST (ICS 204 WF)

CONTROLLED UNCLASSIFIED
INFORMATION//BASIC

1. Incident Name: <p style="text-align: center; font-size: 1.2em;">McKinney</p>	2. Operational Period: Date From: 08/20/22 Date To: 08/21/22 Time From: 0700 Time To: 0700	3. Branch Division <p style="text-align: center; font-size: 1.2em;">20 REPAIR GROUP</p>
Page 1 of 3		

4. Operations Personnel:	
Operations Section Chief: John Owings, Jason Flores(t)	Night Ops:
Branch Director: Rob Szczepanek	Branch Safety: Don Fullmer, Ray Miller
Division/Group Supervisor: Steve Kovacs, Dave Deleon(t)	Air Attack: Derek Wheeler

5. Resources Assigned:		** Resources Below in Bold are 12 Hour **				
Resource Identifier	LWD	Leader	Personnel	Request #	Hours	Reporting Location
CRW2 TORRES CONTRACTING	8/30	Jose Vera	20	C-116	0700-1900	Montague Camp
DUSTBUSTERS PLUS, LLC	9/1	Chris Hubbard	20	C-122	0700-1900	Montague Camp
HC2 PVT IRON MOUNTAIN	9/1	Ramon Cisneros	20	C-124	0700-1900	Montague Camp
DOZ2 BERRY	8/30	Ron Mattson	2	E-225	0700-1900	Montague Camp
*DOZ3 JUNGWIRTH <i>Clayton Bennett</i>	8/21	Jerry Jungwirth	2	E-182	0700-1900	Montague Camp
EXC2 PACIFIC RIDGELINE	8/20	Bob White	2	E-280	0700-1900	Montague Camp
EXC2 LONESTAR	8/25	Jonathon Coltrin	2	E-281	0700-1900	Montague Camp
EXC2 DOWNEY TRUCKING	8/24	Trevor Downey	2	E-360	0700-1900	Montague Camp
EXC2 PETERS	9/1	Chad Lewis	2	E-401	0700-1900	Montague Camp
EXC2 LET-ER-BUCK TRUCKING	8/31	Steve Lassen	2	E-402	0700-1900	Montague Camp
EXC2 DAVIS	9/1	Joshua Bender	2	E-403	0700-1900	Montague Camp
EXC3 JOHNSON	9/2	Lane Wilson	2	E-404	0700-1900	Montague Camp
CHP3 PVT HANSEN E-342	8/22	Joshua Hansen	1	E-342	0700-1900	Montague Camp
CHP3 PVT HANSEN E-343	8/22	Melkay Cisneros	1	E-343	0700-1900	Montague Camp
GRD2 PVT JOHNSON	8/24	Mike LaMarr	2	E-362	0700-1900	Montague Camp
MAST PETERS E-234	9/2	Chad Lewis	2	E-234	0700-1900	Montague Camp
*WTS2 TOBIASSON	8/28	Justin Rhodes	1	E-21	0700-1900	Montague Camp
WTS2 HANNA	8/31	Ken Kelly	2	E-191	0700-1900	Montague Camp

6. Work Assignments:

- Continue suppression repair on indirect lines and direct lines where appropriate.
- Clear McKinney Creek, Bunkhouse and Yreka-Walker Roads for incident access.
- Continue to gather and update repair data points for progress tracking.
- Perform fire suppression operations and patrol on IA fires.

7. Special Instructions:

- READs will check in and out with DIVS.
- * Denotes resource available for initial attack.
- BAER teams will be conducting assessments within divisions.

8. Communications							
Name	Ch	Function	Rx Freq	Rx Tone	Tx Freq	Tx Tone	Notes
COMMAND		*** UTILIZE THE DESIGNATED COMMAND CHANNEL FOR THE GEOGRAPHICAL DIVISION YOU ARE WORKING IN ***					
VFIRE 24	12	TACTICAL	154.2725	T6-156.7	154.2725	T6-156.7	
A/G TAC	14	A/G TAC	167.0625	none	167.0625	none	
CALCORD	15	MEDICAL	156.0750	T6-156.7	156.0750	T6-156.7	Air Ambulance
AIRGUARD	16	AIRGUARD	168.6250	none	168.6250	T1-110.9	<Emergency Use Only>

9. Prepared by: Name:	RESL	RESL	Signature:
ICS 204	Date/Time: 8/19/2022	2200	Personnel Count: 87

NIMS IAP

CONTROLLED UNCLASSIFIED INFORMATION//BASIC

ASSIGNMENT LIST (ICS 204 WF)

CONTROLLED UNCLASSIFIED INFORMATION/BASIC

1. Incident Name: McKinney
2. Operational Period: Date From: 08/20/22 Date To: 08/21/22
Time From: 0700 Time To: 0700
3. Branch: 20 Division: REPAIR GROUP
4. Operations Personnel:
Operations Section Chief: John Owings, Jason Flores(t)
Branch Director: Rob Szczepanek
Division/Group Supervisor: Steve Kovacs, Dave Deleon(t)
Night Ops:
Branch Safety: Don Fullmer, Ray Miller
Air Attack: Derek Wheeler
5. Resources Assigned:
** Resources Below in Bold are 12 Hour **
Resource Identifier LWD Leader Personnel Request # Hours Reporting Location
WTS2 DARRAH LOGGING 8/31 8/22 Carl Walker 1 E-337 0700-1900 Montague Camp
WTT2 JOHNSON 405 9/1 Tim Gray 1 E-405 0700-1900 Montague Camp
WTT2 YREKA OUTLANDS 8/31 Scott Krautheim 1 E-406 0700-1900 Montague Camp
FMOD PACIFIC RIDGELINE 8/27 Aaron Adams 2 O-443 0700-1900 Montague Camp
FMOD BUCK MASON 8/22 Jeremy Mason 2 O-444 0700-1900 Montague Camp
DIV TFLD DELEON 8/31 David Deleon 1 O-591 0700-1900 Montague Camp
TFLD HULL 9/1 Isaac Hull 1 O-611 0700-1900 Montague Camp
TFLD ULRICH 8/22 Justin Ulrich 1 O-457 0700-1900 Montague Camp
HEQB VETROCK 8/26 Vetrock, Shad A 1 O-546 0700-1900 Montague Camp
HEQB MATHESON 9/2 Ryan Matheson 1 O-612 0700-1900 Montague Camp
REAF SPAAK 8/22 8/21 Jordan Spaak 1 O-616 O-496 0700-1900 Montague Camp
REAF O'NEIL 8/22 Eric O'Neil 1 O-431 0700-1900 Montague Camp
ARCH BONSKOWSKI 8/24 Alicia Bonskowski 1 O-506 0700-1900 Montague Camp
ARCH KISSINGER 8/24 Krystal Kissinger 1 O-421 0700-1900 Montague Camp
REAF OLIN 8/23 Grant Olin 1 O-538 0700-1900 Montague Camp
REAF CODE 8/21 Bryson Code 1 O-330 0700-1900 Montague Camp
REAF COURTER 8/21 Joshua Courter 1 O-558 0700-1900 Montague Camp
ARCH DICKS 8/24 Merrill Dicks 1 O-561 0700-1900 Montague Camp
6. Work Assignments:
- Continue suppression repair on indirect lines and direct lines where appropriate.
- Clear McKinney Creek, Bunkhouse and Yreka-Walker Roads for incident access.
- Continue to gather and update repair data points for progress tracking.
- Perform fire suppression operations and patrol on IA fires.
7. Special Instructions:
- READs will check in and out with DIVS.
- * Denotes resource available for initial attack.
- BAER teams will be conducting assessments within divisions.
8. Communications
Name Ch Function Rx Freq Rx Tone Tx Freq Tx Tone Notes
COMMAND *** UTILIZE THE DESIGNATED COMMAND CHANNEL FOR THE GEOGRAPHICAL DIVISION YOU ARE WORKING IN ***
VFIRE 24 12 TACTICAL 154.2725 T6-156.7 154.2725 T6-156.7
A/G TAC 14 A/G TAC 167.0625 none 167.0625 none
CALCORD 15 MEDICAL 156.0750 T6-156.7 156.0750 T6-156.7 Air Ambulance
AIRGUARD 16 AIRGUARD 168.6250 none 168.6250 T1-110.9 <Emergency Use Only>
9. Prepared by: Name: RESL
Signature: K8
IC 204 Date/Time: 8/19/2022 2200 Personnel Count: 20

CONTROLLED UNCLASSIFIED INFORMATION/BASIC

ASSIGNMENT LIST (ICS 204 WF)

CONTROLLED UNCLASSIFIED
INFORMATION/BASIC

1. Incident Name: <p style="text-align: center; margin: 0;">McKinney</p>	2. Operational Period: Date From: 08/20/22 Date To: 08/21/22 Time From: 0700 Time To: 0700	3. Branch <p style="text-align: center; margin: 0;">20</p>	Division <p style="text-align: center; margin: 0;">REPAIR GROUP</p>
---	---	---	--

Page 3 of 3

4. Operations Personnel:	
Operations Section Chief: John Owings, Jason Flores(t)	Night Ops:
Branch Director: Rob Szczepanek	Branch Safety: Don Fullmer, Ray Miller
Division/Group Supervisor: Steve Kovacs, Dave Deleon(t)	Air Attack: Derek Wheeler

5. Resources Assigned:	** Resources Below in Bold are 12 Hour **					
Resource Identifier	LWD	Leader	Personnel	Request #	Hours	Reporting Location
ARCH GUISTO	8/26	Bret Guisto	1	O-425	0700-1900	Montague Camp
REAF Dietzler	8/31	Dietzler, Karl	1	O-166	0700-1900	Montague Camp
REAF FRALEY	8/24	Dylan Fraley	1	O-150	0700-1900	Montague Camp
READ (T) PERNAS	8/30	Antonio Pernas	1	O-581	0700-1900	Montague Camp
CRW2 North Pacific Forestry Inc.	9/3	Miguel Sanchez	20	C-123	0700-1900	Montague Camp
DOZ 3 Carlsons Construction Inc	8/30	Marvin Madrigal	2	E-183	0700-1900	Montague Camp
		Kevin Carlson				
WTS2 JOHNSON	8/28	Tim Gray	1	E-104	"	"
ENG6 A3-ASF-EG62	8/25	Andrew Zimmerman	6	E-372	"	"

non staging
1/K ->
1/K ->

- 6. Work Assignments:**
- Continue suppression repair on indirect lines and direct lines where appropriate.
 - Clear McKinney Creek, Bunkhouse and Yreka-Walker Roads for incident access.
 - Continue to gather and update repair data points for progress tracking.
 - Perform fire suppression operations and patrol on IA fires.

- 7. Special Instructions:**
- READs will check in and out with DIVS.
 - * Denotes resource available for initial attack.
 - BAER teams will be conducting assessments within divisions.

8. Communications

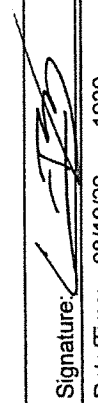
Name	Ch	Function	Rx Freq	Rx Tone	Tx Freq	Tx Tone	Notes
COMMAND	*** UTILIZE THE DESIGNATED COMMAND CHANNEL FOR THE GEOGRAPHICAL DIVISION YOU ARE WORKING IN ***						
VFIRE 24	12	TACTICAL	154.2725	T6-156.7	154.2725	T6-156.7	
A/G TAC	14	A/G TAC	167.0625	none	167.0625	none	
CALCORD	15	MEDICAL	156.0750	T6-156.7	156.0750	T6-156.7	Air Ambulance
AIRGUARD	16	AIRGUARD	168.6250	none	168.6250	T1-110.9	<Emergency Use Only>

9. Prepared by: Name:	RESL	RESL
		Signature:
ICS 204	Date/Time: 8/19/2022 2200	Personnel Count: 4

NIMS IAP

CONTROLLED UNCLASSIFIED INFORMATION/BASIC

ICS 205 - INCIDENT RADIO COMMUNICATIONS PLAN

1. Incident Name: McKinney Incident Channels		2. Date/Time Prepared Date: 08/19/2022 Time: 1930		3. Operational Period: Date From: 08/20/22 Time From: 0700		Date To: 08/21/22 Time To: 0700		
4. Communications								
Ch#	Function	Name	Assigned To	Rx Freq	Rx Tone	Tx Freq	Tx Tone	Notes
1	COMMAND	NIFC C5	Div Q/R/T/X	169.7500	T5-146.2	167.1000	T5-146.2	Buckhorn Bally LO
2	COMMAND	NIFC C12	DIV AZ,D,Night	173.0375	T5-146.2	167.3250	T5-146.2	Tom Martin Pk
3	COMMAND	NIFC C50	Montague	170.3125	T5-146.2	163.8250	T5-146.2	Butcher Hill
4	COMMAND	NIFC C52	DIV P	171.0875	T5-146.2	164.6000	T5-146.2	Bald Mtn
5	COMMAND	NIFC C53	DIV X	173.0250	T5-146.2	165.3625	T5-146.2	Gun Sight Pk
6	TACTICAL	NIFC T3	IA	168.6000	T5-146.2	168.6000	T5-146.2	TFR IA TAC
7	TACTICAL	NIFC T5	DIV AZ	166.7250	T5-146.2	166.7250	T5-146.2	
8	TACTICAL	NIFC T6	Div P/D,Night	166.7750	T5-146.2	166.7750	T5-146.2	Night Div Tac
9	TACTICAL	NIFC T7	DIV Q/R/T/X	168.2500	T5-146.2	168.2500	T5-146.2	
10	TACTICAL	VFIRE 22	Unassigned	154.2650	T6-156.7	154.2650	T6-156.7	
11	TACTICAL	VFIRE 23	Unassigned	154.2950	T6-156.7	154.2950	T6-156.7	
12	TACTICAL	VFIRE 24	Repair Grp	154.2725	T6-156.7	154.2725	T6-156.7	
13	A/G COMMAND	A/G CMD	A/G Command	166.9375	none	166.9375	none	
14	A/G TAC	A/G TAC	A/G Tactical	167.0625	none	167.0625	none	
15	MEDICAL	CALCORD	CALCORD	156.0750	T6-156.7	156.0750	T6-156.7	Air Ambulance
16	AIRGUARD	AIRGUARD	AIRGUARD	168.6250	none	168.6250	T1-110.9	<Emergency Use Only>
17								
18								
19								
20	AIRGUARD	AIRGUARD	AIRGUARD	168.6250	none	168.6250	T1-110.9	<Emergency Use Only>
5. Special Instructions								
CURRENT CLONE: MCK0806 McKinney Communications 916-798-5791								
6. Prepared by (Communications Unit Leader): Name: Chris Perry			Signature: 		Date/Time: 08/19/22 1930			
ICS 205 - CONTROLLED UNCLASSIFIED INFORMATION/BASIC								

ICS 205 - INCIDENT RADIO COMMUNICATIONS PLAN

CONTROLLED UNCLASSIFIED INFORMATION//BASIC

1. Incident Name: McKinney IA GROUP	2. Date/Time Prepared Date: 08/19/2022 Time: 1930	3. Operational Period: Date To: 08/21/22 Time To: 0700
--	--	---

4. Communications									
Ch#	F function	Name	Assigned To	Rx Freq	Rx Tone	Tx Freq	Tx Tone	Notes	
1	COMMAND	KNF ONG2	I/A Yeti	172.2750	none	164.7000	T2-123.0	Lake Mtn (KNF - Happy Camp)	
2	COMMAND	KNFONG11	I/A Yeti	172.2750	none	164.7000	T11-114.8	Slater Butte (KNF - Happy Camp)	
3	COMMAND	KNF BLK1	I/A McKinney	169.6375	none	168.7750	T1-110.9	Mase Mtn (KNF - Oak Knoll)	
4	COMMAND	KNF BLK2	I/A McKinney	169.6375	none	168.7750	T2-123.0	Lake Mtn (KNF - Oak Knoll)	
5	COMMAND	KNFBLK10	I/A McKinney	169.6375	none	168.7750	T10-107.2	Collins Baldy (KNF - Oak Knoll)	
6	TACTICAL	NIFC T2	I/A Tac Primary	168.2000	none	168.2000	none		
7	TACTICAL	R5 T5	I/A Tac Secondary	167.1125	none	167.1125	none		
8	COMMAND	KNF RPT2	KNF Dispatch	171.5250	none	165.4125	T2-123.0	Lake Mtn. (KNF)	
9	COMMAND	KNFRPT11	KNF Dispatch	171.5250	none	165.4125	T11-114.8	Slater Butte (KNF)	
10	IA A/G	R5 A/G 43	A/G Primary	167.6000		167.6000		KNF I/A - Air to Ground	
11	A/G CMD	MCK AG CMD	A/G Command	166.9375	none	166.9375	none	McKinney A/G Command	
12	A/G TAC	MCK AG TAC	A/G Tactical	167.0625	none	167.0625	none	McKinney A/G Tactical	
13	A/G CMD	YET AG CMD	A/G Tactical	168.4000	none	168.4000	none	Yeti A/G	
14	COMMAND	RIVER RPT	I/A McKinney	172.2500	none	165.0750		River RPT (Tone 2,7,10)	
15	MEDICAL	CALCORD	Medical	156.0750	T6-156.7	156.0750	T6-156.7	Air Ambulance	
16	AIRGUARD	AIRGUARD	EMERGENCY	168.6250	none	168.6250	T1-110.9	FOR EMERGENCY ONLY	
17									
18									
19									
20	AIRGUARD	AIRGUARD	EMERGENCY	168.6250	none	168.6250	T1-110.9	FOR EMERGENCY ONLY	

5. Special Instructions **CURRENT CLONE: IA 0806**
 McKinney Communications 916-798-5791

6. Prepared by (Communications Unit Leader): Name: Chris Perry	Signature:
ICS 205 - CONTROLLED UNCLASSIFIED INFORMATION//BASIC	Date/Time: 08/19/22 1930

ICS 205 - INCIDENT RADIO COMMUNICATIONS PLAN

CONTROLLED UNCLASSIFIED INFORMATION//BASIC

1. Incident Name: McKinney Cal Fire IA GROUP	2. Date/Time Prepared Date: 08/19/2022 Time: 1930	3. Operational Period: Date To: 08/21/22 Time To: 0700
---	--	---

4. Communications									
Ch#	Function	Name	Assigned To	Rx Freq	Rx Tone	Tx Freq	Tx Tone	Notes	
1	COMMAND	CDF SKU T1	SKU L T1	151.3250	T6-156.7	159.3600	T1-110.9	FOREST SUMMIT	
2	COMMAND	CDF SKU T2	SKU L T2	151.3250	T6-156.7	159.3600	T2-123.0	SHASTA VALLEY	
3	COMMAND	NIFC C5	AVAILABLE	169.7500	T5-146.2	167.1000	T5-146.2		
4	COMMAND	NIFC C50	AVAILABLE	170.3125	T5-146.2	163.8250	T5-146.2		
5	COMMAND	NIFC C53	AVAILABLE	173.0250	T5-146.2	165.3625	T5-146.2		
6	I/A TAC	CDF T7	AVAILABLE	151.3400	T16-192.8	151.3400	T16-192.8		
7	I/A TAC	CDF T8	AVAILABLE	151.3700	T16-192.8	151.3700	T16-192.8		
8	TACTICAL	CDF T9	AVAILABLE	151.3850	T16-192.8	151.3850	T16-192.8		
9	TACTICAL	CDF T10	AVAILABLE	151.4000	T16-192.8	151.4000	T16-192.8		
10	TACTICAL	CDF T11	AVAILABLE	151.4450	T16-192.8	151.4450	T16-192.8		
11	TACTICAL	NIFC T2	AVAILABLE	168.2000	none	168.2000	none		
12	TACTICAL	CDF A/G 1	CDF A/G1	151.2200	192.8	151.2200	192.8		
13	A/G COMMAND	A/G CMD	MCK A/G CMD	166.9375	none	166.9375	none		
14	A/G TAC	A/G TAC	MCK A/G TAC	167.0625	none	167.0625	none		
15	MEDICAL	CALCORD	CALCORD	156.0750	T6-156.7	156.0750	T6-156.7	Ambulance	
16	AIRGUARD	AIRGUARD	EMERGENCY	168.6250	none	168.6250	T1-110.9	EMERGENCY	
17									
18									
19									
20	AIRGUARD	AIRGUARD	EMERGENCY	168.6250	none	168.6250	T1-110.9	EMERGENCY	

5. Special Instructions
 CURRENT CLONE: CDFIA807
 McKinney Communications 916-798-5791

6. Prepared by (Communications Unit Leader): Name: Chris Perry	Signature:
ICS 205 - CONTROLLED UNCLASSIFIED INFORMATION//BASIC	Date/Time: 08/19/22 1930

AIR OPERATIONS SUMMARY 220 Prepared By: JoAnn Overacker Prepared: 08/19/2022 Prepared Time: 16:00

1. MCKINNEY

2. OPERATIONAL PERIOD 08/20/2022
START TIME: 07:00 **END TIME:** 21:00
SUNRISE: 06:22 **SUNSET:** 20:03

3. REMARKS (Safety Notes, Hazards, Air Operations Special Equipment, etc.):

Ensure all aircraft have the IA Frequency Command "SKU Local" 151.3250 RX, 159.3600 TX
 Tone 1- (110.9) and Tone 2- (123.0)
 **A/G CMD Cal Fire 151.220 Tone Guarded w/ Tone 16- (192.8)
 **Cut off time for ordering aircraft is 19:30.

4. MEDICAL AIRCRAFT:

H-407 Hoist/ALS/NVG
 *Located at Redding Airport
 *Ordered through Yreka Dispatch

5. TFR: # 2/2620
 Polygon
 Altitude: 12,000'
 TFR Victor Frequency:
 118.7250

6. PERSONNEL	NAME	PHONE #	7. FREQUENCIES	AM	FM	8. FIXED-WING Avail/ Type/ Make-Model/ N#/ Base
AOBD	JoAnn Overacker	209-559-1617	A/A Fixed Wing		166.6000	AIRTANKERS, SEATS, AIR ATTACK
ASGS	Brent Ohlwiler	949-633-1365	A/A Rotor Wing	127.0250		ATGS - 1BR LOCATED IN REDDING
ATGS	Derrick Wheeler	530-355-3274	A/G Command		166.9375	HLCO in N14HX located @ Siskiyou Airport.
ATGS-T	Mike Mansson	218-341-7293	A/G Tactical		167.0625	ATGS- AA-05 available at Siskiyou Airport for I.A.
HLCO	Jay Walters	623-696-8532	Deck		163.1000	
HEBM	Gabe Herrera	530-559-7206	CALCORD		156.0750 (TONE 6: 156.7)	
			TOLC	123.0250		*Email daily cost sheets to: Mckinneyhelibase2022@gmail.com
			Air-Guard		168.6250 (110.9 TX)	*Email shift tickets and times to: 2022.mckinney.finance@firenet.gov

9. HELICOPTERS

FAA N#	TYPE	MAKE/ MODEL	BASE	START	AVAIL	REMARKS	FAA N#	TYPE	MAKE/ MODEL	BASE	START	AVAIL	REMARKS
763TW	1	UH60	Siskiyou	07:00	08:30	Bucket	H-506	2	Bell 205++	Siskiyou	07:00	08:30	Bucket
45917	1	S-61	Siskiyou	07:00	08:30	Tanked	N14HX	3	Bell 407	Siskiyou	07:00	08:00	Bucket
9CH	1	CH-47D	Siskiyou	07:00	08:30	Bucket							

JoAnn Overacker

MCKINNEY KNF-6177

INTERAGENCY IA AGREEMENT

MCKINNEY IC	IMT12	JAMES ARAGON	928-486-0450
MCKINNEY AOBD	IMT12	JOANN OVERACKER	209-559-1617
KNF AVIATION CONTACT	KNF AVIATION OFFICER	TYLER DETRICK	530-925-9668
CAL FIRE IA CONTACT	SKU CONTACT	DARRYL LAWS	530-598-2601
SKU ECC	YICC DISPATCH	ON DUTY CAPTAIN	530-842-7066
KNF ECC	YICC DISPATCH	ON DUTY CAPTAIN	530-841-4300

- New starts within the McKinney TFR boundaries will be reported to the Yreka Interagency Command Center. YICC will determine jurisdiction and appropriate response.
- YICC will coordinate with AOBD and McKinney Air Attack for aviation response to new starts within the TFR regardless of agency. Aviation Frequencies will remain on McKinney frequencies for Air Tactics and TFR victor.
- If jurisdiction of the new start is determined to be under Siskiyou Unit Protection or within the Mutual Threat Zone (5 miles) the Air to Ground, Command and Ground Tactical frequency will be assigned as local IA frequencies. All other aviation frequencies will remain on TFR/ McKinney team frequencies.
 - o AIR TACTICS – 166.6000
 - o VICTOR- TFR: 118.7250, ROTOR: 127.0250
 - o AIR TO GROUND CMD – CDF A/G 1 – 151.2200 (T16 TX AND RX)
 - o COMMAND– SKU LOCAL: RX-151.3250 TX-159.3600
 - o GROUND TACTICAL – CDF TAC (MULTIPLE)
- If jurisdiction of the new fire start is on the Klamath National Forest– Federal Protection Area (MTZ is the exception) the team will take action and all radio frequencies will remain the same.
 - o AIR TACTICS – 166.6000
 - o VICTOR- TFR: 118.7250, ROTOR: 127.0250
 - o AIR TO GROUND CMD – 166.9375
 - o AIR TO GROUND TAC –167.0625

COVID-19 PREVENTION INFORMATION **MAINTAINING A HEALTHY WORKFORCE**

from the COVID Advisor Team

All fire personnel are susceptible to contracting COVID-19. The health and well-being of all personnel must be a priority throughout the fire season. **Mask use, social distancing, and good hygiene** will support the health of fire personnel and are important ways to **prevent the spread of COVID-19 and maintain the health of all fire personnel.**

Self-Awareness/ Daily Health Screening

Separate yourself from others and notify your supervisor if you experience COVID-19 related symptoms (fever or chills, cough – more than expected, shortness of breath or difficulty breathing, fatigue, muscle or body aches, headache, new loss of taste or smell, sore throat, congestion or runny nose, nausea or vomiting, diarrhea). Supervisors will use COVID precautions and facilitate COVID testing at the identified COVID testing locations.

COVID-19 Testing availability – (2) locations

McKinney Base Camp (430 E. Prather St.) - **Adventure Medics**

Klamath River Spike Camp (28017 Hwy 96) - **Mountain Medics**

Priorities for testing will be for those with COVID-related symptoms and those with COVID exposure.

Sanitary and Personal Hygiene Practices

Rigorous sanitary practices are important for reducing the transmission of infectious diseases. All personnel should cover their coughs and sneezes. Perform proper hand hygiene including handwashing or hand sanitizer use after touching potentially contaminated surfaces, removing face coverings, after using the restroom, and before eating or putting anything in their mouth.

Mask Wearing

Mask wearing will be required when Siskiyou County community level is high. The Siskiyou County community level for the week of August 15, 2022 – August 21, 2022 is **Medium.**



Local Government Resources on CFAA

If you are demobing and there is no OES AREP there:

- Have the FSC or IC review and sign your 42s
 - You give the incident the pink copy
 - You keep the gold copy
- You mail the white and green (if it has a green) to OES Headquarters per the instructions on the 42

**OES JOB AIDS, FORMS, F-42 SAMPLES AND
CFAA AGREEMENT**



Your OES Fire & Rescue Assistant Chief

Patrick Titus

916-634-9225

Training Specialist Message

To assure proper documentation for your assignment:



Trainee Registration

1. Scan the QR Code
2. Complete the Trainee Registration Form

At the end of your assignment:

1. **Trainee:** Complete the exit interview form. Use the exit interview QR code to access the document.

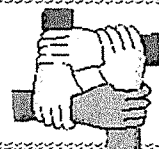


Trainee Exit Interview

2. **Trainer:** Fill in the Position Task Book as completely as possible for this incident.
3. **Trainer:** Complete the ICS 225 performance evaluation and discuss with your Trainee. Make sure it's **signed** by both the Trainer and Trainee. Take a picture/copy of the ICS 225 and send it to imt2training@gmail.com



Human Resource Message



SOMETIMES THE DUES WE PAY
TO MAINTAIN INTEGRITY ARE
PRETTY HIGH, BUT THE
ULTIMATE COST OF MORAL
COMPROMISE IS MUCH HIGHER.
- MICHAEL JOSEPHSON

© Michael Josephson 2015

www.SimulTrain.com

Have a great shift!

Adrian Escobedo, HRSP 530-523-3804

The Five-D System for Effective Fireline Waterbars

To make effective waterbars, use the 5-D System: **Distance**, **Diagonal**, **Divert**, **Discharge**, and **Dissipate**.

Distance: Waterbars must be placed the proper distance apart, based on slope. This keeps the area that accumulates runoff small enough to prevent damage. The table below gives the maximum distance between waterbars, or between a waterbar and the next upslope drainage break.

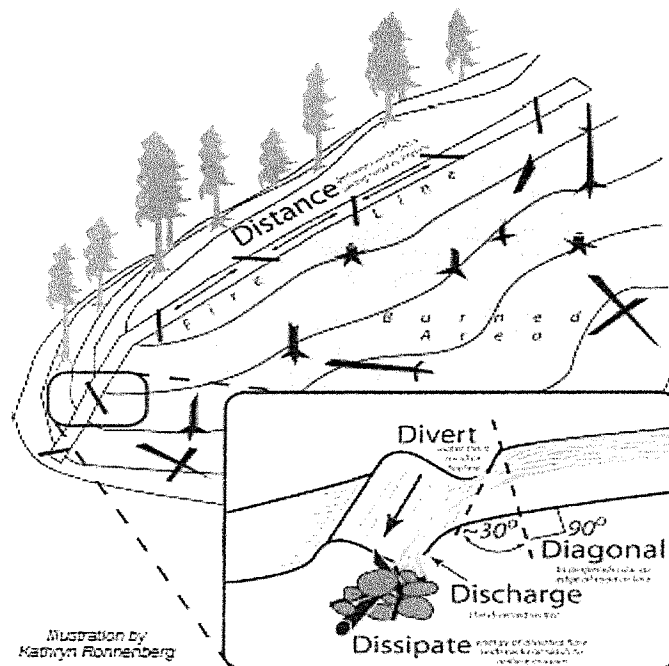
Diagonal: Don't bully the flow, lead it. Waterbars built directly across a fireline tend to fail. Waterbars built diagonal to the fireline lead the water off and work better. A simple rule is to build them at 30 degrees off perpendicular (see the illustration below).

Divert: A good waterbar will divert the water off the fireline. To do this the waterbar must be deep enough to handle all the flow for as long as it's needed. Excavation is much better than fill in making a durable and effective waterbar (a ditch or a dip beats a dike).

Discharge: Another feature of a good waterbar is that it will discharge the flow. A good waterbar is not a dam, it must have an open outlet.

Dissipate: Finally, a good waterbar should dissipate the flow just below the outlet to exhaust its eroding power and cause it to filter into the soil. This may require placing slash, rock, or debris below the outlet.

Fireline slope %	Maximum Distance Apart (feet)	<i>Recommended spacing for waterbars on firelines. Waterbars should be no further apart than this, but they may be closer. When in doubt, put in more. From: USDA-Forest Service, "Safe Administrator's Handbook"</i>
1-6.....	300	
7-9.....	200	
10-14.....	150	
15-20.....	90	
21-40.....	50	
41-60.....	25	



Reference: Hauge, C.J., M.J. Furniss and F.D. Euphrat. 1979. *Soil erosion in California's Coast Forest District*. California Geology. June, 1979

FINANCE MESSAGE

Fire Name: McKinney
Fire Number: CA-KNF-006177
Accounting Code: P5 PX2F (0505)
Email: 2022.mckinney.finance@firenet.gov

Finance Documents Needed upon "Check In" (If Not Already Submitted):

Please email these documents or scan the QR Code below, attach & submit.			
FED Equipment/ Crews: <ul style="list-style-type: none"> Manifest - showing employment type (GS or WG) or AD rates if applicable 	Overhead: <ul style="list-style-type: none"> AD/Casual Hire Form If regular Agency please ensure "GS" or "WG" is written on your first CTR 	Contract Equipment/ Contract Crews: <ul style="list-style-type: none"> Agreement Manifest Resource Order Inspections 	Cooperator: <ul style="list-style-type: none"> Cooperative Agreement Resource Order

When emailing finance:

- Overhead/FED: *subject line:* TIME, Resource #, Resource Name
- Equipment/Cooperator: *subject line:* EQTR, Resource #, Resource Name

Prior to your demob date, please contact Finance *via email* to expedite the demob process.
Upon submittal of your final CTR/Shift Tickets, Finance will email you copies of your pay documents for review and signature.



Missing Equipment Finance Documents

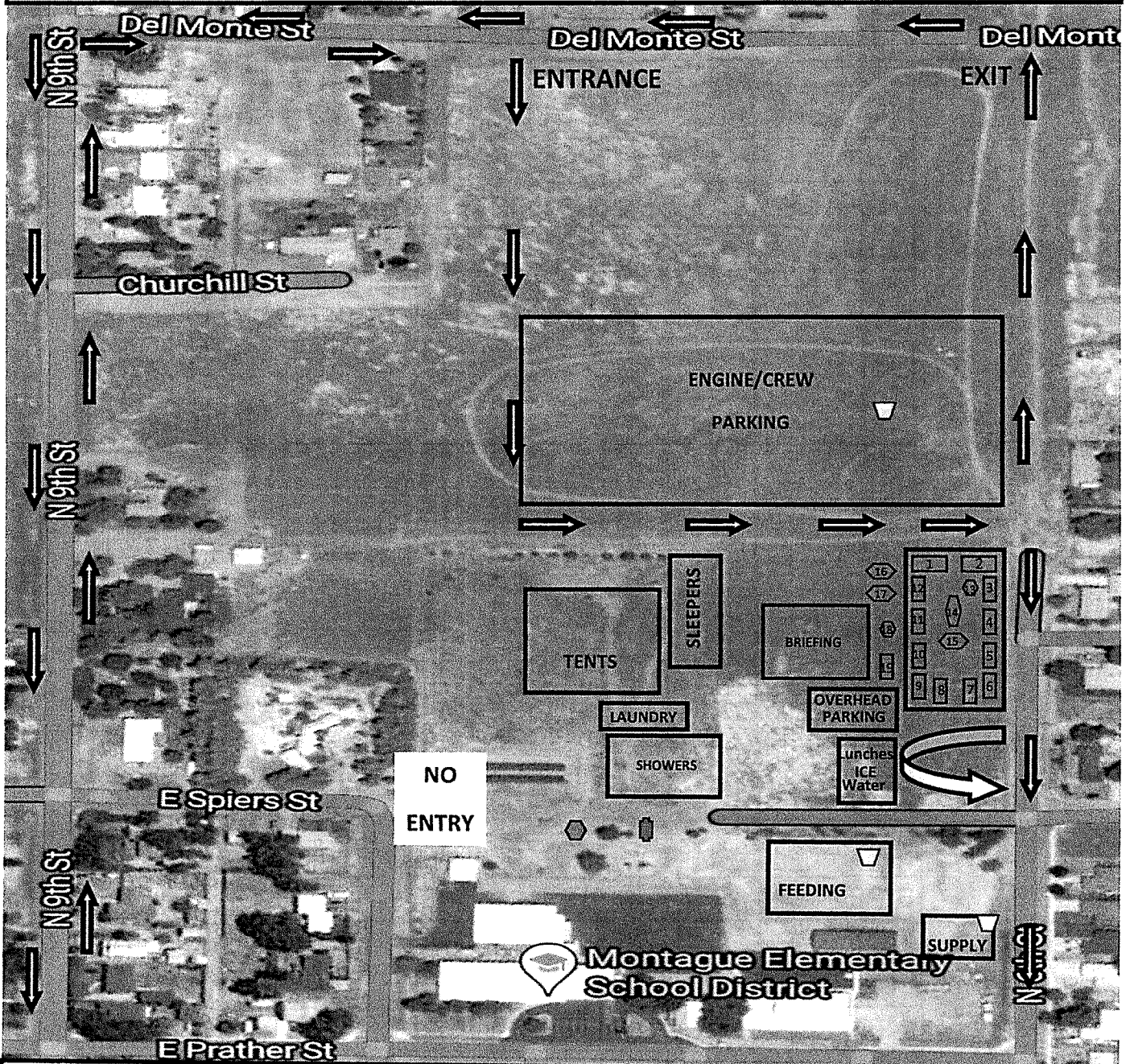
Please submit documents to 2022.McKinney.Finance@firenet.gov

Resource Order Number	Agreement	Resource Order	Pre-Inspection Form
C107		X	
C108	X	X	
C109	X	X	
E23		X	
E26		X	
E27		X	
E36	X	X	
E40	X	X	
E128	X	X	
E149		X	
E154	X	X	X
E155	X	X	X
E157		X	
E165	X	X	
E175	X		
E192		X	
E194		X	
E298		X	
E407		X	
E406		X	
E405	X	X	
E404	X		
E403		X	
E348		X	
E52		X	
O2443		X	
O195		X	



Mckinney ICP

430 E Prather St, Montague, CA 96064



- | | |
|------------------------------|------------------------------|
| 1. Operations/Safety/Air OPS | 12. DEMOB/Check-in/Resources |
| 2. IC/Liaison | 13. Overflow |
| 3. ITSS | 14. Planning Meetings |
| 4. Planning/Situation | 15. READS |
| 5. Medical | 16. Overflow |
| 6. PIO | 17. Human Resources |
| 7. GIS | 18. COMMS |
| 8. Copy Trailer | 19. COMMS |
| 9. Facilities | Cloning/Comms DEMOB |
| 10. Cost/Claims/FSC | Medical |
| 11. Finance | Dumpster |

*****Safety Message*****

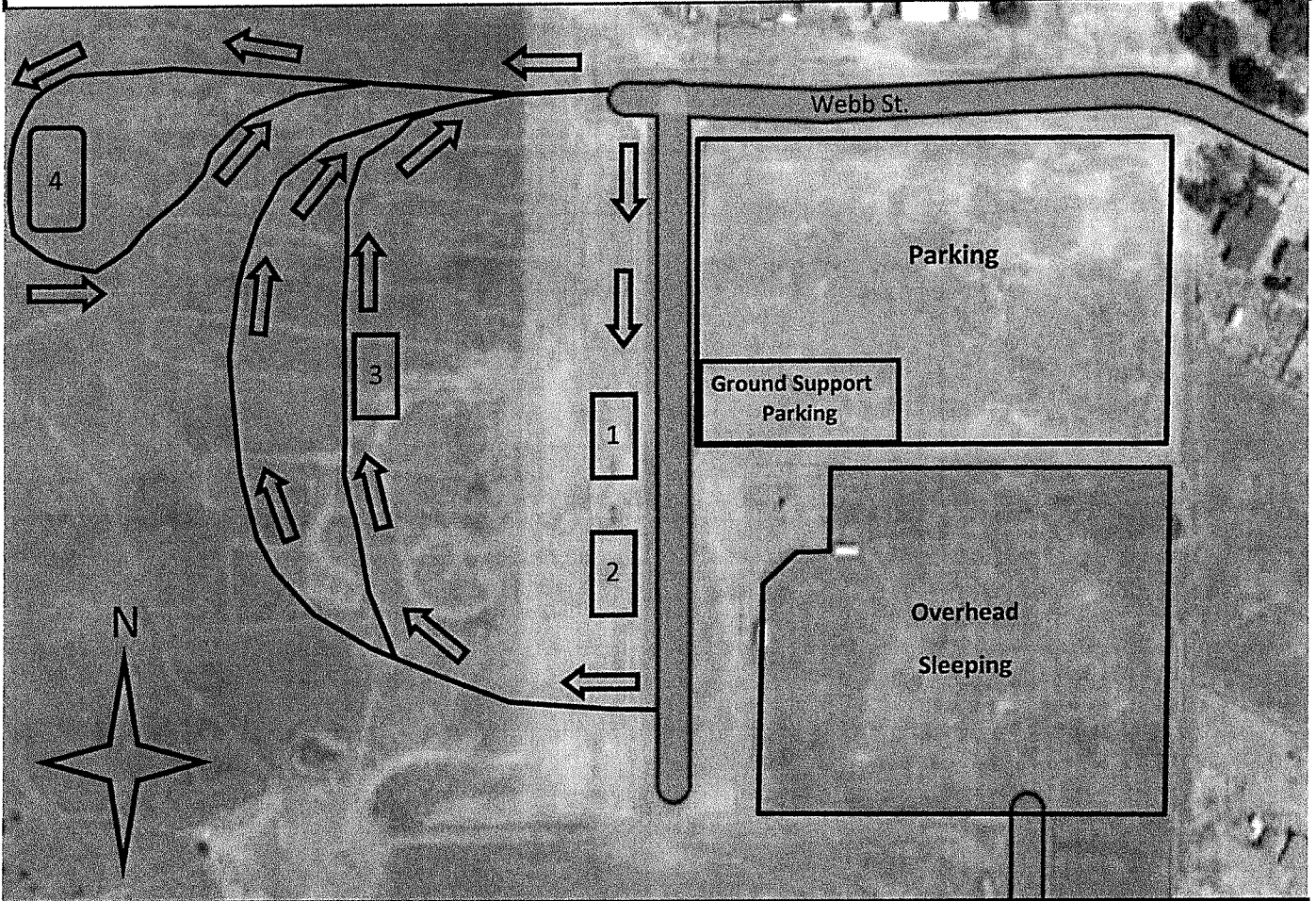
School in session.

Watch for pedestrians.

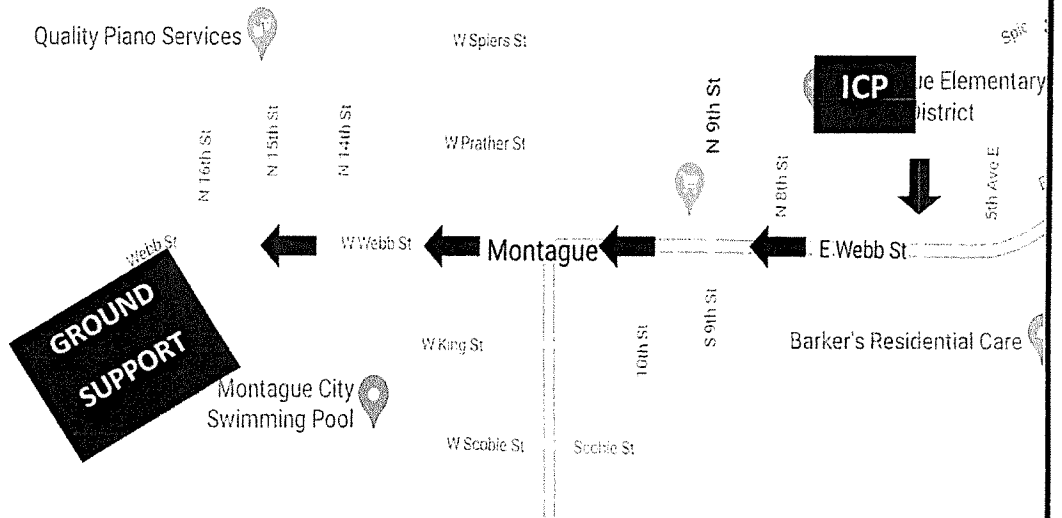
Reduce speed in residential areas.

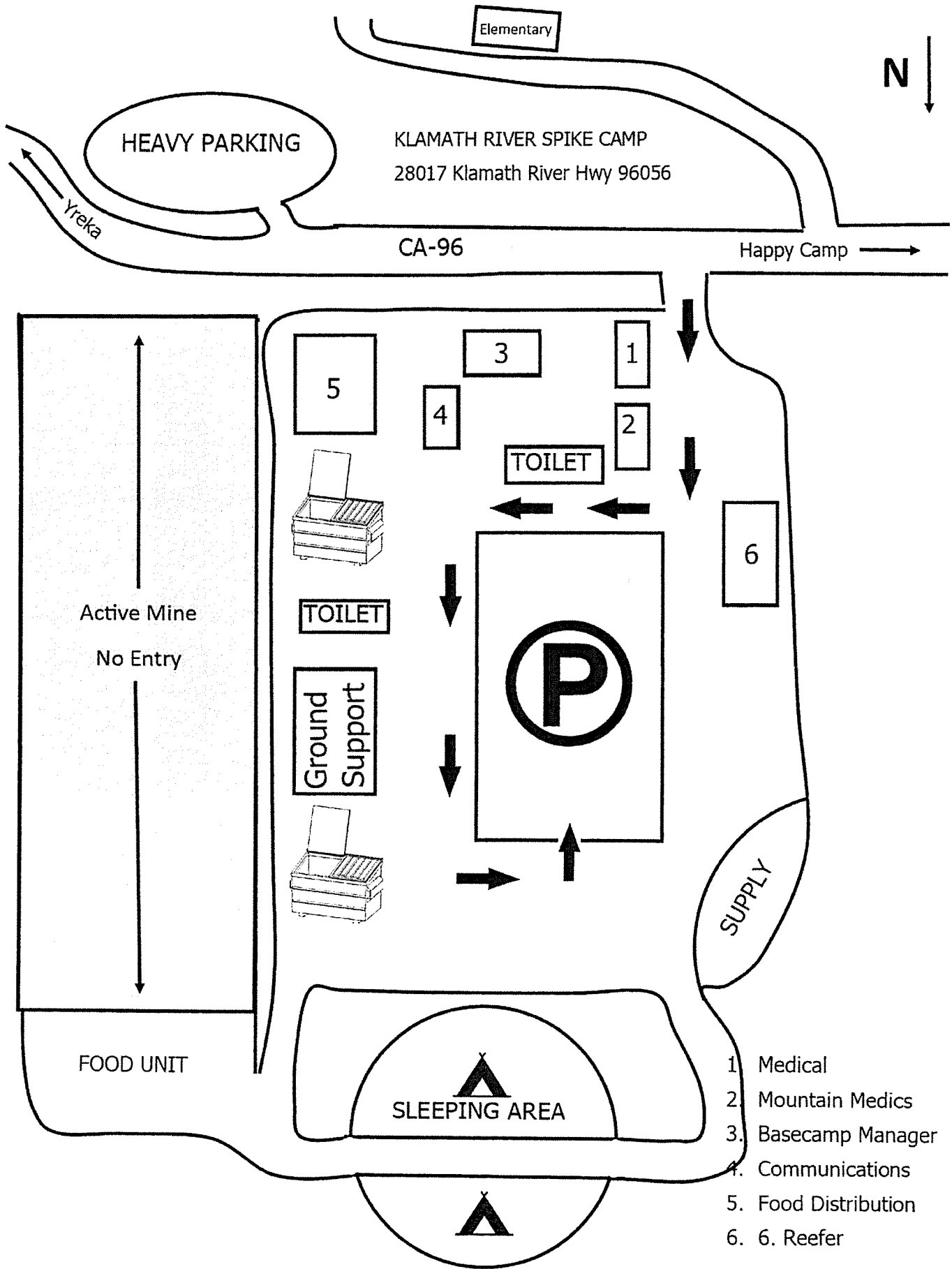
Mckinney Ground Support

South of 650 Webb Street, Montague, CA 96064



1. Mechanic/Inspection
2. Ground Support
3. Weed Wash
4. FUEL





- 1. Medical
- 2. Mountain Medics
- 3. Basecamp Manager
- 4. Communications
- 5. Food Distribution
- 6. 6. Reefer



**MCKINNEY FIRE
US-CA-KNF-006177
DMOB LIST
08/20-21/2022**

PLEASE ARRIVE AT FINANCE AT THE TIME LISTED BY YOUR NAME.
YOU CAN PICK UP YOUR CHECKOUT SHEET ANY TIME AFTER 0730
ON YOUR DEMOB DAY

THANK YOU

AUGUST 20, 2022

CREWS

R.O. #	ITEM CODE	NAME	TIME
C-78	CRW2	NO. PACIFIC FORESTRY	0730
C-80	CRW2	OREGON WOODS #3	0800
C-75	CRW2	JD FORESTRY	0830

EQUIPMENT

E-279	WTS2	HURLIMANN, F.	
E-278	WTS2	HURLIMANN, J.	0730
E-275	WTS2	H&H FEEDERS	0745
E-277	WTS2	H&H FEEDERS	0800

OVERHEAD

O-390	PIO2	PARKER, LIA	0730
O-378	TFLD	SANISYA, ERNEST	0740
O-374	SEC1	TURGYAN, JOSEPH	0750
O-257	DIVS	WALTER, JAY	0800
O-298	RCDM	PENN, MICHAEL	0810
O-439	FMOD	NO. ZONE FALLERS	0820
O-428	HMGB	PHIPPS, RYAN	0830
O-413	EMTF	POST, KYLE	0840
O-411	EMPF	THOMAS, AARON	0850
O-406	EMPF	SCHMIER, RANDAL	0900
O-261	TFLD	KEIPER, STEVEN	0900
O-283	FELB	STEENHOVER, C.	0910
O-477	GSUL	HENNINGSSEN, K.	0910
O-522.19	DIVS	BAKER, SHAWN	0920
O-197	SECM	CARPENTER, MIKE	0940
O-234	BCMG	HITT, WILLIAM	0950
O-229	BCMG	YOUNG, VONNIE	0950
O-216	SEC2	KONEN, KEITH	1000
O-253	DIVS	KINDER, JOHN	1010
O-512	COML	DELATORRE, A.	1029

AUGUST 21, 2022

CREWS

R.O.#	ITEM CODE	NAME	TIME
C-66	CR2I	FORT APACHE #1	0730

EQUIPMENT

E-309	ENG3	SPENCE INDUSTRIES	0730
E-303	ENG3	FLORES, RYAN	0745
E-280	EXCA	PACIFIC RIDGELINE	0800
E-289	ENG3	OAK CREEK 8-32	0815
E-290	ENG3	ROCK CREEK	0845
E-288	ENG6	AZGCP 8-11	0900
E-305	ENG5	FRANCO REFOREST	0915

OVERHEAD

O-408	EMPF	MACALPINE, LUKE	0800
O-480	FFT2	MONSON, JEFFREY	0810
O-370	EQPM	FOLINO, RYAN	0820
O-368	INCM	EVANS, SCOTT	0830
O-352	SEC1	HART, BRIAN	0840
O-438	DIVS	EDWARDS, THOMAS	0850
O-449	FMOD	LONE PINE CUTTING	0900
O-407	EMPF	KENYON, JACOB	0910
O-449	FMOD	UNDERDOG FALLING	0920
O-419	FOBS	FAUSKEE, JEREMIAH	0940

MCKINNEY DEMOB PHONE # 435-840-5432

FIRELINE ORDER FORM

Date & Time order was placed:		Order # (DIVS + #)	Location & Time for delivery (DIV, LZ, DP, Lat Long)		Mode of Delivery
Point of Contact:			Lat:		Driver <input type="checkbox"/>
			Long:		DIVS to pick up <input type="checkbox"/>
Notes:		Elevation:		HELO <input type="checkbox"/>	
		Length of Longline required:			
Order received in Communications by (Name):					Time:
Order shipped to line by (Name):					(Send this sheet to the line with the order) Time:
#	Item				Amount
1	Hoselay Kit 1000': 10- 1½" Hose, 10- 1" Hose, 10- 1½" Gated wyes, 10-1½" x 1" reducers, 10-1" nozzles				
2	Mop up Kit: 20 - ¾" Hose, 10- 1½"x1" Reducers, 10- 1" x ¾" Reducers, 10- ¾" shutoffs, 10- ¾" wyes, 10- ¾" nozzles				
#	Item	Amount	#	Item	Amount
3	Hose (100') 1½"		33	Drip Torch	
4	Hose (100') 1"		34	Fusees, Boxes	
5	Hose (50') ¾"		35	FIREQUICK Hotshot Flares (12/Box)	
6	Nozzle, 1½"		36	FIREQUICK Stubby Flares (12/Box)	
7	Nozzle, 1"		37	FIREQUICK Chubby Flares (75/Box)	
8	Nozzle, garden ¾"		38	FIREQUICK Big Shot Flares (50/Box)	
9	Wye, Gated 1½"		39	Cartridge #6 purple (Box)	
10	Wye, Gated 1"		40	Batteries AAA, case	
11	Wye, Gated ¾"		41	Batteries AA, case	
12	Reducer, 1½ x 1"		42	Flagging, specify color:	
13	Reducer, 1" x ¾"		43	Water, 5 gallon Cubies	
14	Inline tee, 1½" x 1"		44	Water, Bottled Cases	
15	Foam 5 gallon container		45	Gatorade, Cases	
16	Backpack Pump		46	MRE's (12/Box)	
17	Pumpkin 1500/3000/6000 gallon		47	Heavy Mill Plastic	
18	Folda-Tank 1000/1500 gallon		48	Staple Gun with 1/2" staples	
19	Mark 3 Pump		49	Wrap, Structure 54" x 300'	
20	Mark 3 Pump Kit		50	ANYTHING NOT LISTED ABOVE :	
21	Pump, Lightweight		51		
22	Pump, Volume		52		
23	Sprinkler Kit (6 per kit)		53		
24			54		
25			55		
26			56	COVID Kit	
27	Chainsaw Kit		57	Bath in a bag each	
28	Bar Oil - gallons		58	Hygiene Kit	
29	2 Cycle oil (Pints)		59	Trash Bags, Box	
30	Gas Unleaded (Gallons)		60	Paper Towels each	
31	Diesel (Gallons)		61	Disenfectant bottle	
32	5 gallon fuel can (Empty)		62	Nitrile Gloves, specify size: L <input type="checkbox"/> XL <input type="checkbox"/> # Boxes	

MEDICAL PLAN (ICS 206 WF) CIIMT 12

1. Incident Name				2. Operational Period				
McKINNEY INCIDENT				Date/Time: 08/20/2022 – 08/21/2022 (0700 - 0700)				
3. EMS / Ambulance Services/Aid Stations								
Name	Location			Frequency/Phone		Advanced Life Support (ALS) Yes No		
ADVENTURE MEDICS MMSU	MONTAGUE ICP			909-762-9032		X		
MOUNTAIN MEDICS	KLAMATH RIVER SPIKE CAMP			909-762-9032		X		
EMERGENCY RESP LOGS	KLAMATH RIVER SPIKE CAMP			909-762-9032		X		
4. Air Rescue / Air Ambulance Services								
Name	Phone			Type of Aircraft & Capability				
KERN COUNTY H407	McKINNEY COMMUNICATIONS			HELICOPTER, ALS, 24/7 – HOIST				
CHP H14	McKINNEY COMMUNICATIONS			HELICOPTER, ALS, 24/7 – HOIST				
MERCY AIR	McKINNEY COMMUNICATIONS			AIR AMBULANCE ALS, 24/7 – NO HOIST				
REACH	McKINNEY COMMUNICATIONS			AIR AMBULANCE ALS, 24/7 – NO HOIST				
PHI	McKINNEY COMMUNICATIONS			AIR AMBULANCE ALS, 24/7 – NO HOIST				
5. Hospitals (all times estimated from incident location)								
Name & Level	GPS Datum – WGS 84 Degrees Decimal Minutes		Travel Time Air Gnd		Phone	Helipad Yes No		Address
U.C. DAVIS MEDICAL CENTER (LVL 1)	Lat:	N. 38° 33.2963'	1.5 HRS	6 HRS	ER Direct Line: 916-734-2011	X		2315 Stockton Blvd Sacramento, CA 95817
	Long:	W. 121° 27.3918'						
ASANTE ROGUE VALLEY MEDICAL CENTER (LVL 2)	Lat:	N. 42° 19.0505'	20 MIN	2 HRS	ER Direct Line: 541-789-7116	X		2825 Barnett Rd. Medford, OR 97504
	Long:	W. 122° 49.8392						
MERCY MEDICAL CENTER (LVL 3)	Lat:	N. 41° 19.0943'	45 MIN	1.5 HRS	ER Direct Line: 530-926-9360	X		914 Pine St. Mt Shasta, CA 96067
	Lat:	W. 122° 19.2806'						
FAIRCHILD MEDICAL CENTER (LVL 4)	Lat:	N. 41° 43.167'	15 MIN	60 MIN	ER Direct Line: 530-841-6292	X		444 Bruce St. Yreka, CA 96097
	Long:	W. 122° 38.7483						
6. Division / Crew Emergency Pre-Plan								<i>Update and discuss with assigned resources daily.</i>
Fireline EMT / Medic's Division / Branch Location								
Air Hoist site location site: Lat: / Long: / Elevation:								
Helispot: Lat: / Long: / Elevation:								
7. Prepared By (Medical Unit Leader)			8. Date/Time		9. Reviewed By (Safety Officer)		10. Date/Time	
MEDL Gena Fowlkes 909-762-9032			08/19/2022 1600		SOF2 PAUL TOMPKINS 619-889-7533		08/19/2022 1600	
<i>Gena Fowlkes</i>					<i>Paul Tompkins</i>			

MEDICAL PLAN (ICS 206 WF) CIIMT 12

Medical Incident Report																													
<p>FOR A NON-EMERGENCY INCIDENT, WORK THROUGH CHAIN OF COMMAND TO REPORT AND TRANSPORT INJURED PERSONNEL AS NECESSARY.</p> <p>FOR A MEDICAL EMERGENCY: IDENTIFY ON SCENE INCIDENT COMMANDER BY NAME AND POSITION AND ANNOUNCE "MEDICAL EMERGENCY" TO INITIATE RESPONSE FROM IMT COMMUNICATIONS/DISPATCH.</p>																													
<p>Use the following items to communicate situation to communications/dispatch.</p>																													
<p>1. CONTACT COMMUNICATIONS / DISPATCH (Verify correct frequency prior to starting report) <i>Ex: "Communications, Div. Alpha. Stand-by for Emergency Traffic."</i></p> <p>2. INCIDENT STATUS: Provide incident summary (including number of patients) and command structure. <i>Ex: "Communications, I have a Red priority patient, unconscious, struck by a falling tree. Requesting air ambulance to Forest Road 1 at (Lat./Long.) This will be the Trout Meadow Medical, IC is TFLD Jones. EMT Smith is providing medical care."</i></p>																													
Severity of Emergency / Transport Priority	<p><input type="checkbox"/> RED / PRIORITY 1 Life or limb threatening injury or illness. Evacuation need is IMMEDIATE <i>Ex: Unconscious, difficulty breathing, bleeding severely, 2° - 3° burns more than 4 palm sizes, heat stroke, disoriented.</i></p> <p><input type="checkbox"/> YELLOW / PRIORITY 2 Serious Injury or illness. Evacuation may be DELAYED if necessary. <i>Ex: Significant trauma, unable to walk, 2° - 3° burns not more than 1-3 palm sizes.</i></p> <p><input type="checkbox"/> GREEN / PRIORITY 3 Minor Injury or illness. Non-Emergency transport <i>Ex: Sprains, strains, minor heat-related illness.</i></p>																												
Nature of Injury or Illness & Mechanism of Injury	Brief Summary of Injury or Illness <i>(Ex: Unconscious, Struck by Falling Tree)</i>																												
Transport Request	Air Ambulance / Short Haul/Hoist Ground Ambulance / Other																												
Patient Location	Descriptive Location & Lat. / Long. (WGS84)																												
Incident Name	Geographic Name + "Medical" <i>(Ex: Trout Meadow Medical)</i>																												
On-Scene Incident Commander	Name of on-scene IC of Incident within an Incident <i>(Ex: TFLD Jones)</i>																												
Patient Care	Name of Care Provider <i>(Ex: EMT Smith)</i>																												
<p>3. INITIAL PATIENT ASSESSMENT: Complete this section for each patient as applicable (start with the most severe patient)</p> <p>Patient Assessment: See IRPG PAGE 106</p>																													
Treatment:																													
<p>4. TRANSPORT PLAN:</p> <p>Evacuation Location (if different): (Descriptive Location (drop point, intersection, etc.) or Lat. / Long.) Patient's ETA to Evacuation Location:</p>																													
Helispot / Extraction Site Size and Hazards:																													
<p>5. ADDITIONAL RESOURCES / EQUIPMENT NEEDS:</p> <p><i>Example: Paramedic/EMT, Crews, Immobilization Devices, AED, Oxygen, Trauma Bag, IV/Fluid(s), Splints, Rope rescue, Wheeled litter, HAZMAT, Extrication :</i></p>																													
<p>6. COMMUNICATIONS: Identify State Air/Ground EMS Frequencies and Hospital Contacts as applicable</p> <table border="1" style="width: 100%; border-collapse: collapse;"> <thead> <tr> <th style="width: 15%;">Function</th> <th style="width: 25%;">Channel Name/Number</th> <th style="width: 15%;">Receive (RX)</th> <th style="width: 15%;">Tone/NAC *</th> <th style="width: 15%;">Transmit (TX)</th> <th style="width: 15%;">Tone/NAC *</th> </tr> </thead> <tbody> <tr> <td>COMMAND</td> <td></td> <td></td> <td></td> <td></td> <td></td> </tr> <tr> <td>AIR-TO-GRND</td> <td></td> <td></td> <td></td> <td></td> <td></td> </tr> <tr> <td>TACTICAL</td> <td></td> <td></td> <td></td> <td></td> <td></td> </tr> </tbody> </table>						Function	Channel Name/Number	Receive (RX)	Tone/NAC *	Transmit (TX)	Tone/NAC *	COMMAND						AIR-TO-GRND						TACTICAL					
Function	Channel Name/Number	Receive (RX)	Tone/NAC *	Transmit (TX)	Tone/NAC *																								
COMMAND																													
AIR-TO-GRND																													
TACTICAL																													
<p>7. CONTINGENCY: <u>Considerations:</u> If primary options fail, what actions can be implemented in conjunction with primary evacuation method? Be thinking ahead. .</p>																													
<p>8. ADDITIONAL INFORMATION: Updates/Changes, etc. .</p>																													
<p>REMEMBER: Confirm ETA's of resources ordered. Act according to your level of training. Be Alert. Keep Calm. Think Clearly. Act Decisively. .</p>																													