

**\*\* CORRECTED \*\***

# INCIDENT ACTION PLAN MCKINNEY INCIDENT

CA-KNF-006177  
P5PX2F (0505)



IAP  
MAPS  
VIRTUAL CHECK-IN  
OPS BRIEFING STREAM  
FINANCE DOCUMENTS  
PIO INFORMATION

## OPERATIONAL PERIOD

8/27/2022 0700

to

8/27/2022 1900

Saturday



# INCIDENT OBJECTIVES (ICS 202)

<b>1. Incident Name:</b>  <p style="text-align: center;">McKinney</p>	<b>2. Operational Period:</b>	Date From: 8/27/2022 Time From: 0700	Date To: 8/27/2022 Time To: 1900
<b>3. Objective(s):</b>			
<u>Leaders Intent</u> Implement a full suppression strategy on the McKinney Fire. Values at risk include human safety, private timberlands, communities, critical infrastructure and associated improvements. Apply tactics that offer the highest probability of success.			
<u>Management Objectives</u> <ul style="list-style-type: none"> <li>- Provide for firefighter and public safety through hazard recognition and application of the risk management process.</li> <li>- Coordinate all public information with CALFIRE and the Klamath National Forest to provide timely and continuous information to affected agency partners, cooperators, and the public.</li> <li>- Work with Resource Advisors to implement the fire suppression repair plan.</li> <li>- Provide initial attack capability for the Klamath National Forest on the Oak Knoll and Scott River Ranger Districts.</li> </ul>			
<u>Leaders Intent</u> Provide the highest level of customer service to all involved with or impacted by the McKinney Fire. Ensure transparent, timely and accurate communication at all levels of the incident and strengthen relationships with cooperators. All incident assigned personnel should be prepared to take appropriate actions regarding: <ul style="list-style-type: none"> <li>- Personal safety and the safety of others, including driving slowly and defensively.</li> <li>- Fatigue management by taking breaks and maintaining work/rest cycles.</li> <li>- Limiting exposure to infectious disease by implementing Center of Disease Control, California Department of Public Health, and agency guidelines.</li> <li>- Professional behavior, and timely/effective communication.</li> </ul>			
<u>Control Objectives</u> <ul style="list-style-type: none"> <li>- Keep the McKinney Fire contained to the current fire perimeter to prevent the fire from spreading to private property, surrounding communities, and other values at risk.</li> </ul>			
<b>5. Site Safety Plan Required?</b>			
		Yes <input type="checkbox"/>	No <input checked="" type="checkbox"/>
<b>Approved Site Safety Plan(s) Located at:</b>			
<b>6. Incident Action Plan</b>			
<input checked="" type="checkbox"/> ICS 203	<input checked="" type="checkbox"/> ICS 215A	<input checked="" type="checkbox"/> Line Order Form	<input checked="" type="checkbox"/> READ Message
<input checked="" type="checkbox"/> ICS 204	<input checked="" type="checkbox"/> ICS 220	<input checked="" type="checkbox"/> Training Message	<input checked="" type="checkbox"/> COVID Info
<input checked="" type="checkbox"/> ICS 205	<input checked="" type="checkbox"/> Facility Maps	<input checked="" type="checkbox"/> Travel Map	<input checked="" type="checkbox"/> OES Message
<input checked="" type="checkbox"/> ICS 206	<input checked="" type="checkbox"/> Weather Forecast	<input checked="" type="checkbox"/> Demob Plan	<input checked="" type="checkbox"/> ICS 214
<input checked="" type="checkbox"/> ICS 208	<input checked="" type="checkbox"/> Fire Behavior	<input checked="" type="checkbox"/> Finance Message	<input type="checkbox"/>
<b>7. Prepared By:</b> PSC		Position/Title: PSC	Signature: <u>Walter J. Hugg</u>
<b>8. Approved by Incident Commander:</b>		IC	Signature: <u>[Signature]</u>
<b>ICS 202</b>			

## ORGANIZATION ASSIGNMENT LIST (ICS 203)

<b>1. Incident Name:</b> McKinney		<b>2. Operational Period: Date From:</b> 8/27/2022 Time From: 0700		<b>Date To:</b> 8/27/2022 Time To: 1900	
<b>3. Incident Commander(s) and Command Staff:</b>			<b>7. Operation Section:</b>		
IC/UC's	James Aragon, Jim Snow(t)	Day Operations	John Owings, Jason Flores(t)		
Deputy	Alan Taylor	Planning Operations	Chris St. Pierre, JT Sohr(t)		
Safety Officer	Paul Tompkins	Night Ops			
Information Officer	Mark Thibideau				
Liaison Officer	Don Smith	<b>Branch</b>			
<b>4. Agency/Organization Representatives:</b>		Division/Group	TREE ABATEMENT	John Enneking, Dustin Decker(t)	
Klamath NF AADM	Rachel Smith	Division/Group	REPAIR	Steve Kovacs, Dave Deleon(t)	
Klamath NF AREP	Drew Stroberg	Division/Group	KLAMATH IA	Ed Willy	
District Ranger Happy Camp	Roberto Beltran	Division/Group			
Lead Resource Advisor	Anthony Gray	Division/Group			
Cal OES Fire/Rescue	Pat Titus	<b>Branch</b>			
Cal OES EM	Robert Goyeneche	Division/Group			
Cal OES LE	Celeste Fowler	Division/Group			
Cal Trans	Betty Bucher	Division/Group			
Yreka CHP	Stacy Barr	Division/Group			
Siskiyou Sheriff	Jeremiah Larue	<b>Branch</b>			
Yreka PD	Chief Gilman	Division/Group			
Timber Representative	Darren Quigley	Division/Group			
Board of Supervisors	Ray Haupt	Division/Group			
CCC AREP	Lisa Setzer	<b>Branch</b>			
Pacific Power	Tyler Avery	Division/Group			
<b>5. Planning Section:</b>		Division/Group			
Chief	Steve Anderson	Division/Group			
Deputy	Walter Herzog	Division/Group			
Resources Unit	Ryan Resnick, Kelly Smyth(t), John Hamer(t)	<b>Branch</b>			
Situation Unit	Ray Rook, Matt Snyder	Division/Group			
Demob Unit	Janet Grisedale	Division/Group			
HRSP		<b>Branch</b>			
GISS	Eric Ball(t)	Division/Group			
Fire Behavior Analyst	John Cook, Lauren Blake(t)	Division/Group			
Incident Meteorologist	Terry Lebo	Division/Group			
Status Check In	Charlie Hardy(t)	Division/Group			
Training Tech Spec	Dominic Panno	Division/Group			
Info Tech. Support Specialist	Brett Davidson, Daren Howard	<b>Air Operations Branch</b>			
Documentation Unit	Joey Kosiorowski, Robert Wandel	Air Operations	JoAnn Overacker		
<b>6. Logistics Section</b>		Air Tactical Group Supervisor	Derek Wheeler		
Chief	David Alicea	Air Support Group Supervisor	Brent Ohlwiler		
Deputy Logs	Peter Fitzmaurice, Jim Neumann	Helibase Manager			
Ordering Manager	Edward Jensen(t)	<b>8. Finance/Administration Section:</b>			
Supply Unit	Patricia Dutrey	Chief	David Dukart, Lisa Wilson		
Facilities Unit	Arthur Curley	Time Unit	Rebecca Lang(t), Cara Scott(t)		
Security Manager	Cam Gonzalez	Equipment Time	Roger Siemens, Ryan Kirtland(t), Sherise Foster(t)		
Ground Support Unit	Chris Syler	Personnel Time	Amy VanAtta(t)		
Communications Unit	Chris Perry	Comp/Claims Unit	Tracey Nicholson, Debra McClure(t)		
Base Camp Manager	Juan Mota, Joe De La Torre	Cost Unit	Eleanor Molina		
Medical Unit	Gena Fowlkes	IBA	Jackie, Stimach, Donna Tate		
Food Unit Leader	Gary Simoes				
<b>Prepared By: Name:</b>	PSC	PSC	Signature: <i>Walter Herzog</i>		
<b>ICS 203</b>		<b>Date/Time:</b>	8/26/2022 2000 hours		<b>NIMS IAP</b>





# McKinney Fire Weather Forecast



**FORECAST NO:** 26  
**PREDICTION FOR:** 0700 Sat Aug 27 - 0700 Sun Aug 28  
**ISSUED:** 1800, Aug 26, 2022

**NAME OF FIRE:** McKinney  
**UNIT:** Klamath N.F.  
**Incident Meteorologist:** Terry Lebo

## Weather Summary

Cooler air will spread over the area Saturday in the wake of a dry cold front. Temperatures will drop 10 to 15 degrees from Friday. Breezy winds from the north Saturday afternoon and evening will become light and variable Saturday night. High pressure aloft will gradually build over the region early next week, increasing temperatures and lowering humidity.

### SATURDAY:

- **WEATHER:** Partly to mostly sunny and breezy.
- **WIND (EYE LEVEL):** Sheltered areas: Downslope/down valley 1-3 mph through 1000 then upslope 7-10 mph with gusts 15-18 mph. Ridges, unsheltered areas, wind-aligned drainages: From the east 3-6 mph through 1200 then from the north-northwest 12-15 mph with gusts 20-30 mph through 2000.
- **CHANCE OF WETTING RAIN:** 0%
- **RAIN AMOUNTS:** none.
- **LAL (Lightning Activity Level):** 1
- **MAX TEMPERATURES:** 85-91 lower elevations, 72-77 highest ridgetops.
- **MIN RH:** 18-28% lower elevations, 30-40% ridgetops.
- **INVERSION:** weak mid-slope inversion mixing out by 1000.

### SATURDAY NIGHT:

- **WEATHER:** Mostly clear. Moderate to excellent RH recovery.
- **WIND (20 FT):** Sheltered areas: Downslope/down valley 2-4 mph. Ridges, unsheltered areas, wind-aligned drainages above mid-slope: from the north 7-10 mph with gusts 15-20 mph through 2000, then becoming east-northeast 3 to 6 mph.
- **CHANCE OF WETTING RAIN:** 0%
- **RAIN AMOUNTS:** none.
- **LAL (Lightning Activity Level):** 1
- **MIN TEMPERATURES:** 47-57.
- **MAX RH:** 50-70%.
- **INVERSION:** Moderate to strong inversion developing near mid-slope.

### SUNDAY:

- **WEATHER:** Sunny.
- **WIND (EYE LEVEL):** Sheltered areas: Downslope/down valley 1-3 mph through 1300 then upslope 3-6 mph with gusts around 12 mph. Ridges, unsheltered areas, wind-aligned drainages: From the east 3-6 mph through 1200 then from the northwest 7-10 mph with gusts around 15 mph through 2000.
- **CHANCE OF WETTING RAIN:** 0%
- **RAIN AMOUNTS:** none.
- **LAL (Lightning Activity Level):** 1
- **MAX TEMPERATURES:** 92-98 lower elevations, 78-84 highest ridgetops.
- **MIN RH:** 12-22% lower elevations, 20-30% ridgetops.
- **INVERSION:** Moderate to strong mid-slope inversion mixing out around 1300.

## Extended Outlook

**Monday:** Sunny. Highs 84-104. Minimum humidity: 10-25%. Winds northwest 7-10 mph with gusts around 20 mph.  
**Tuesday:** Mostly sunny. Highs 87-107. Minimum humidity: 8-18%. Winds northwest 8-12 mph with gusts around 20 mph.  
**Wednesday:** Mostly sunny. Highs 86-106. Minimum humidity: 7-17%. Winds northwest 7-10 mph with gusts 15-20 mph

# FIRE BEHAVIOR FORECAST

FORECAST NUMBER: 27	TYPE OF FIRE: Wildfire
FIRE NAME: McKinney	OPERATIONAL PERIOD: 8/27-28/2022 (0700-1900)
DATE ISSUED: 8/26/2022	TIME ISSUED: 1830
UNIT: CA-KNF	SIGNED: <i>Lauren Blake</i> Typed/printed: Lauren Blake (FBANT)

## WEATHER SUMMARY:

Temp: Day 85-91 (lower) 72-77 (higher) Night Min 47-57 deg  
RH: Day 18-28% (lower) 30-40% (upper) Night: Max 50-70%  
Winds: Day: E 3-6mph <1200, NNW 10-15 mph w Gust to 20-30 <2000  
Night: Unsheltered: WNW 7-10 gust 15-20 until 2000, then becoming ENE 3-6 mph.

## FIRE BEHAVIOR

### GENERAL:

Isolated to mainly burning stumps and heavy ground fuel well interior with limited threat to the control lines. RH recoveries will delay drying of the fine fuels to mid-day then higher afternoon/evening winds than the past few days produce very active fire behavior with any new fire.

Several years of persistent drought and a water year which has received less than 50% of normal rainfall, has the fire footprint within an area identified as "Extreme Drought."

Energy Release Component (Oak Knoll): is at the 71th percentile at 55 (Fuel Model Y 90th percentile is 61).

Predicted fuel conditions:

1HR fuel moisture: 7-9%      10HR moisture: 13%(+3)      100 HR moisture 12%(+2)      1000 HR: 9% (-1)  
Energy Release Component: 55 (-7)      Burning Index: 34 (-6)      Probability of Ignition (PIG) <51%

**Expected Surface Fire Behavior:** (assumes 6 mph eye level wind and 40% slope)

Timber Understory (TU5) Timber with branches, shrubs:

Flame length 7-9' and ROS 10-12 ch/hr head

Grass, Brush (2,SH7)

Flame length 6-15' and ROS 42-63 ch/hr (GS2/SH7)

### SPECIFIC:

**McKinney Fire:** The fire has not experienced perimeter growth for several weeks with the control lines being tested by hot, dry, and windy conditions during that timeframe. Infrared showing the amount of interior heat is diminishing but still present. Project Activity Levels have been in the D range for several days which represents the potential for fire suppression repair, hazard tree abatement with equipment and road repair can spark new fires if working in areas with fuels still available.

**Initial Attack:** A brief cooling will lower fire danger indices, but wind is still present, and any new starts have will likely grow quickly.

Expected flame lengths and rates of spread could mean direct attack with ground resources will not be effective, don't hesitate to order the resources that can be effective. Look for indirect options early.

### AIR OPERATIONS:

Weak mid-slope inversion mixing out by 1000.

Sunrise: 0631    Sunset: 1951

### SAFETY

Risks to fire-line personnel increase significantly during transfer of command periods regardless of the size or complexity of the incident. Share your knowledge of fire behavior, safety risks and hazards to incoming personnel.



## ***Health & Safety Message***

<b>Incident:</b> McKinney Fire CA-KNF-006177	<b>Date/Op Period:</b> 08/27/22 Day Shift 0700-1900
---	--

### **Hazards & Risks**

**Lookouts:** Posting Lookouts is an invaluable tool for gathering information on fire behavior & weather and it's potential impacts to crews working on the fireline. Lookouts should be experienced, competent & trusted. They should have knowledge of crew locations, escape routes, safety zones, trigger points and possess a map, weather kit, watch & IAP.

**Safety Zones:** A safety zone is an area where a firefighter can survive without a fire shelter. The separation distance between firefighter and flames should be at **least 4X the maximum flame height. This is based on flat terrain and no wind conditions. Safety Zones that are downwind and/or upslope from the fire will require larger separation distances.** Reference your IRPG for detailed safety zone size calculations.

**Human Factors to S.A.:** Personalities, fatigue, stress factors are a few reasons that interfere with humans' abilities to gather and react to situational awareness. Key Barriers include:

- Low experience level with local factors
- Distraction from primary task
- Fatigue
- Stress reactions
- Hazardous attitudes

Conduct a self-assessment of yourself. Are any of these barriers affecting you and your ability to do your job or decision-making? Refer to your IRPG and make a conscious effort to mitigate some of these factors.

**Paul Tompkins SOF2**

**L. Lookouts C. Communications E. Escape Routes S. Safety Zones**  
**B E M I N D F U L**

## INCIDENT RISK ANALYSIS (ICS 215a)

DIV	HAZARDOUS ACTIONS / CONDITIONS	MITIGATIONS / WARNINGS / REMEDIES	
ALL	CHAIN SAW AND TREE FELLING OPERATIONS	<ul style="list-style-type: none"> <li>• Follow "Hazard Tree Safety" guidelines in the IRPG</li> <li>• Look up, Look down, Look around for hazard tree indicators</li> <li>• Only fell and buck trees within your expertise and training.</li> <li>• Follow "Procedural Felling Operations"</li> <li>• Do not fall trees during high wind events.</li> <li>• Ensure proper use of all required PPE.</li> </ul>	
ALL	DRIVING HAZARDS	<ul style="list-style-type: none"> <li>• <b>WATCH FOR ROCKS AND WILDLIFE ON HWY 96. Especially from dawn to dusk. DO NOT SKIP AHEAD OF PILOT CAR.</b></li> <li>• Drive defensively! Expect the unexpected around every curve.</li> <li>• Drive with headlights on; use chock blocks, keep windshields clean; look before backing; and use backers whenever available.</li> </ul>	
ALL	STRUCTURE / URBAN INTERMIX HAZARDS	<ul style="list-style-type: none"> <li>• Survey burned out structures carefully. Avoid inhaling residue smoke and fumes.</li> <li>• Watch for downed powerlines and exposed fiber optic lines.</li> <li>• Look for propane tanks and other hazardous materials</li> </ul>	
ALL	EXTREMELY STEEP TERRAIN AND ROLLING MATERIAL	<ul style="list-style-type: none"> <li>• Concentrate on your footing placement; take your time.</li> <li>• Ensure adequate spacing between crewmembers so they can react to dislodged debris.</li> <li>• Post lookouts to warn of rolling debris. <b>SHOUT out to warn others.</b></li> <li>• Look Up, Down and Around frequently.</li> </ul>	
ALL	HAZARD TREES	<ul style="list-style-type: none"> <li>• Follow Hazard Tree Safety Guidelines (IRPG p. 22).</li> <li>• Be especially alert around snags during wind events or changing wind direction.</li> <li>• Check for hazard trees &amp; "widow-makers" in sleeping areas.</li> </ul>	
ALL	UTV / ATV OPERATIONS	<ul style="list-style-type: none"> <li>• Operators must be certified by their agency to operate ATV/UTV's.</li> <li>• DOT approved helmets are required by USDA and DOI agencies.</li> <li>• Operators must be trained in trailering and pulling ATV's and UTV's.</li> <li>• Seatbelts must be worn at all times while driving.</li> </ul>	
ALL	INFECTIOUS DISEASE	<ul style="list-style-type: none"> <li>• Maintain 6' foot distance whenever possible. Wear masks when appropriate.</li> <li>• Do frequent handwashing/sanitizing and disinfecting common surfaces.</li> <li>• Notify MEDL if any symptoms arise.</li> </ul>	
ALL	HEAVY EQUIPMENT DOZERS/EXCAVATORS	<ul style="list-style-type: none"> <li>• Utilize appropriate PPE and other equipment safety mechanisms.</li> <li>• Maintain safe working distances.</li> <li>• Utilize observer or spotter. Avoid moving parts</li> <li>• Ensure the use of effective communication (radio, hand signals).</li> <li>• Identify hazards.</li> </ul>	
ALL	SUPPRESSION REPAIR	<ul style="list-style-type: none"> <li>• Scout out your work area and identify hazards prior to working.</li> <li>• Watch for steep terrain and rolling materials that may be kicked loose by others working in the area.</li> <li>• Avoid working in proximity to heavy equipment.</li> <li>• Monitor personnel for heat related illness; stay hydrated and take frequent rest breaks.</li> </ul>	
ALL	TREE ABATEMENT OPERATIONS	<ul style="list-style-type: none"> <li>• Establish clearly defined work zones.</li> <li>• Establish traffic control plan as needed.</li> <li>• Brief the medical evacuation plan.</li> <li>• Coordinate heavy equipment with the operators for felling and decking logs.</li> </ul>	
ALL	HEAT RELATED ILLNESS (HRI) / DEHYDRATION&FATIGUE	<ul style="list-style-type: none"> <li>• Drink 2: 1 water to sports drinks.</li> <li>• Maintain 2:1 work/rest ratio</li> <li>• Take frequent breaks, minimum of 10 minutes every hour.</li> <li>• <b>Recognize symptoms of HEAT RELATED ILLNESS (IRPG P.110)</b></li> </ul>	
INCIDENT NAME: MCKINNEY ICS 215a		Operational Period: Day Shift	Prepared by: Paul Tompkins





# ASSIGNMENT LIST (ICS 204 WF)

CONTROLLED UNCLASSIFIED  
INFORMATION//BASIC

<b>1. Incident Name:</b> <p style="text-align: center; font-size: 1.2em;">McKinney</p>		<b>2. Operational Period:</b> Date From: 08/27/22    Date To: 08/27/22 Time From: 0700    Time To: 1900				<b>3. Branch</b> <b>Division</b> <p style="text-align: center; font-size: 1.2em;">TREE ABATEMENT</p>	
<b>4. Operations Personnel:</b> Operations Section Chief: <b>John Owings, Jason Flores(t)</b> Branch Director: Division/Group Supervisor: <b>John Enneking, Dustin Decker(t)</b>		Night Ops: Branch Safety: <b>Andy Murrin</b> Air Attack: <b>Derek Wheeler</b>					
<b>5. Resources Assigned:</b>		<b>** Resources Below in Bold are 12 Hour **</b>					
Resource Identifier	LWD	Leader	Personnel	Request #	Hours	Reporting Location	
HEQB(t) BERTELS	9/5	<b>Andrew Bertels</b>	<b>1</b>	<b>O-655</b>	<b>0700-1900</b>	<b>Montague Camp</b>	
HEQB(t) MOLINA	9/4	<b>Robert Molina</b>	<b>1</b>	<b>O-643</b>	<b>0700-1900</b>	<b>Montague Camp</b>	
HEQB(t) PERKINSON	9/4	<b>Russell Perkinson</b>	<b>1</b>	<b>O-645</b>	<b>0700-1900</b>	<b>Montague Camp</b>	
AMBU PVT ADVENTURE MEDICS 1	9/5	<b>Noah Metzler</b>	<b>2</b>	<b>E-138</b>	<b>0700-1900</b>	<b>Klamath River Spike</b>	
AMBU PVT ADVENTURE MEDICS 3	9/8	<b>Rafael Ruiz</b>	<b>2</b>	<b>E-140</b>	<b>0700-1900</b>	<b>Montague Camp</b>	
AMBU PVT MOUNTAIN MEDICS 4 → Repair	9/2	<b>Skylar Bainbridge</b>	<b>1</b>	<b>E-37</b>	<b>0700-1900</b>	<b>Montague Camp</b>	
ARCH STUBBS	9/5	<b>Tracie Stubbs</b>	<b>1</b>	<b>O-667</b>	<b>0700-1900</b>	<b>Montague Camp</b>	
ARCH BOEDY	9/8	<b>Randall Boedy</b>	<b>1</b>	<b>O-669</b>	<b>0700-1900</b>	<b>Montague Camp</b>	
REAF(t) YOST	9/6	<b>Angela Yost</b>	<b>1</b>	<b>O-665</b>	<b>0700-1900</b>	<b>Montague Camp</b>	
REAF DENEVERS	9/3	<b>Greg Denevers</b>	<b>1</b>	<b>O-646</b>	<b>0700-1900</b>	<b>Montague Camp</b>	
REAF GAMIO	9/4	<b>Kaela Gamio</b>	<b>1</b>	<b>O-635</b>	<b>0700-1900</b>	<b>Montague Camp</b>	
READ(t) JANSSEN	9/9	<b>Erik Janssen</b>	<b>1</b>	<b>O-683</b>	<b>0700-1900</b>	<b>Montague Camp</b>	
READ LAU	9/9	<b>Jeffrey Lau</b>	<b>1</b>	<b>O-670</b>	<b>0700-1900</b>	<b>Montague Camp</b>	
Repair → HC21A Red Hawk	9/3	<b>Chris McClendon</b>	<b>1</b>	<b>C-118</b>	<b>0700-1400</b>	<b>Montague Camp</b>	
Repair → HC21A Ohio Buckeyes **	9/1	<b>Chris Guess</b>	<b>1</b>	<b>C-119</b>	<b>0700-1900</b>	<b>Montague Camp</b>	
Repair → AMBU PVT Mountain Medics 5	9/31	<b>Alex Johansen</b>	<b>2</b>	<b>E-284</b>	<b>0700-1900</b>	<b>Klamath Spike</b>	
<b>6. Work Assignments:</b> Implement KNF Hazard Tree Abatement Plan. - Scout roads to be treated by Hazard Tree Abatement Group. - Continue to gather and update repair date points for progress tracking.							
<b>7. Special Instructions:</b> <b>** Denotes Resource Available For Initial Attack</b> - Private property boundary lines will be marked with a tricolor flagging system of white/red/green; red flagging denotes private land, green flagging denotes federal land. - Orange and white candy striped flagging identifies equipment-avoidance areas. *** BE ADVISED: Klamath Spike Camp will be closing by end of shift. All resources are to report to Montague Camp after shift. *** BE ADVISED: Briefing on 08/28 will be held at 0800 at YICC Expanded Dispatch located at 1030 S. Main Street, Yreka, CA.							
<b>8. Communications</b>							
Name	Ch	Function	Rx Freq	Rx Tone	Tx Freq	Tx Tone	Notes
COMMAND	*** UTILIZE THE DESIGNATED COMMAND CHANNEL FOR THE GEOGRAPHICAL DIVISION YOU ARE WORKING IN ***						
VFIRE 22	10	TACTICAL	154.2650	T6-156.7	154.2650	T6-156.7	
A/G TAC	14	A/G TAC	167.0625	none	167.0625	none	
CALCORD	15	MEDICAL	156.0750	T6-156.7	156.0750	T6-156.7	Air Ambulance
AIRGUARD	16	AIRGUARD	168.6250	none	168.6250	T1-110.9	<Emergency Use Only>
<b>9. Prepared by: Name:</b>		RESL		RESL		Signature:	
ICS 204	Date/Time: 8/26/2022		2200		Personnel Count: 15		

NIMS IAP

CONTROLLED UNCLASSIFIED INFORMATION//BASIC



# ASSIGNMENT LIST (ICS 204 WF)

CONTROLLED UNCLASSIFIED  
INFORMATION/BASIC

<b>1. Incident Name:</b> <p style="text-align: center; font-size: 1.2em;">McKinney</p>	<b>2. Operational Period:</b> Date From: 08/27/22    Date To: 08/27/22 Time From: 0700    Time To: 1900	<b>3. Branch</b> <b>Division</b> <p style="text-align: center; font-size: 1.2em;">REPAIR</p>
<b>4. Operations Personnel:</b>		Page 1 of 2

Operations Section Chief: <b>John Owings, Jason Flores(t)</b>	Night Ops:
Branch Director:	Branch Safety: <b>Tim Quigley</b>
Division/Group Supervisor: <b>Steve Kovacs, Dave Deleon(t)</b>	Air Attack: <b>Derek Wheeler</b>

** Resources Below in Bold are 12 Hour **							
Resource Identifier	LWD	Leader	Personnel	Request #	Hours	Reporting Location	
<del>HC21A RED HAWK</del> → TAG	9/3	Chris McClendon	18	C-118	0700-1400	Montague Camp	
<del>HC21A OHIO BUCKEYES</del> → TAG	9/1	Greg Guess	19	C-119	0700-1900	Montague Camp	
HC2 PVT PONDEROSA PT-3	9/3	Chuy Rodriguez	20	C-120	0700-1900	Montague Camp	
HC2 PVT NORTH PACIFIC 123	9/3	Misael Sanchez	20	C-123	0700-1400	Montague Camp	
*ENG3 PVT J3 CONTRACTING 306	9/4	Eric Nahee	3	E-306	0700-1900	Klamath River Spike	
*ENG3 PVT J3 CONTRACTING 398	8/27	Carl Matheny	3	E-398	0700-1400	Klamath River Spike	
ENG3 PVT XTREME WILDLAND 408	9/2	Michael Campasano	3	E-408	0700-1900	Klamath River Spike	
*ENG5 PVT MIKE'S WATER TRUCK 409	9/4	Mike Sturm	3	E-409	0700-1900	Montague Camp	
*ENG6 PVT PARA-CORP 703	9/5	Jordan Tibbelts	3	E-387	0700-1900	Klamath River Spike	
*ENG6 PVT SCHOLL 410	9/5	Adam Shore	3	E-410	0700-1900	Klamath River Spike	
EXC2 PACIFIC RIDGELINE 280	9/5	Darren Scott	2	E-280	0700-1900	Montague Camp	
PROCESSOR PVT JW BAMFORD 420	9/7	Jerry Martinez	2	E-420	0700-1900	Montague Camp	
GRD2 PVT M. PETERS 426	9/4	Rob Jackson	2	E-426	0700-1900	Montague Camp	
WTS2 PVT HANNA 192	8/31	Clayton Cash	2	E-192	0700-1900	Klamath River Spike	
WTS2 PVT DARRAH LOGGING	9/1	Carl Walker	1	E-337	0700-1900	Montague Camp	
WTT2 PVT JOHNSON 405	9/1	Tim Gray	1	E-405	0700-1900	Montague Camp	
TFLD HULL	9/1	Isaac Hull	1	O-611	0700-1900	Montague Camp	
TFLD PIPPIN	9/1	Matthew Pippin	1	O-592	0700-1900	Klamath River Spike	

**6. Work Assignments:**

- Continue suppression repair on hand and dozer lines.
- Grade existing roads as identified by repair plan.
- Continue to gather and update repair data points for progress tracking.

**7. Special Instructions:**

- READs will check in and out with DIVS.
- \* Denotes resource available for initial attack.
- Private property boundary lines will be marked with a tricolor flagging system of white/red/green; red flagging denotes private land, green flagging denotes public land.
- Orange and white candy striped flagging identifies equipment-avoidance areas.

\*\*\* BE ADVISED: Klamath Spike Camp will be closing by end of shift. All resources are to report to Montague Camp after shift.

\*\*\* BE ADVISED: Briefing on 08/28 will be held at 0800 at YICC Expanded Dispatch located at 1030 S. Main Street, Yreka, CA.

**8. Communications**

Name	Ch	Function	Rx Freq	Rx Tone	Tx Freq	Tx Tone	Notes
COMMAND	*** UTILIZE THE DESIGNATED COMMAND CHANNEL FOR THE GEOGRAPHICAL DIVISION YOU ARE WORKING IN ***						
VFIRE 24	12	TACTICAL	154.2725	T6-156.7	154.2725	T6-156.7	
A/G TAC	14	A/G TAC	167.0625	none	167.0625	none	
CALCORD	15	MEDICAL	156.0750	T6-156.7	156.0750	T6-156.7	Air Ambulance
AIRGUARD	16	AIRGUARD	168.6250	none	168.6250	T1-110.9	<Emergency Use Only>

<b>9. Prepared by: Name:</b>	RESL	RESL
ICS 204	Date/Time: 8/26/2022	2200
		Signature:
		Personnel Count: 107

# ASSIGNMENT LIST (ICS 204 WF)

CONTROLLED UNCLASSIFIED  
INFORMATION/BASIC

<b>1. Incident Name:</b> <p style="text-align: center; font-weight: bold;">McKinney</p>	<b>2. Operational Period:</b> Date From: 08/27/22    Date To: 08/27/22 Time From: 0700    Time To: 1900	<b>3. Branch</b> <b>Division</b> <p style="text-align: center; font-weight: bold; font-size: 1.2em;">REPAIR</p>
--	---	--

Page 2 of 2

<b>4. Operations Personnel:</b> Operations Section Chief: <b>John Owings, Jason Flores(t)</b> Branch Director: Division/Group Supervisor: <b>Steve Kovacs, Dave Deleon(t)</b>	Night Ops: Branch Safety: <b>Tim Quigley</b> Air Attack: <b>Derek Wheeler</b>
--	---

5. Resources Assigned:	** Resources Below in Bold are 12 Hour **					
Resource Identifier	LWD	Leader	Personnel	Request #	Hours	Reporting Location
TFLD(t) LIRA	9/5	Mikhail Lira	1	O-622	0700-1900	Montague Camp
HEQB WALKER	9/4	Ryan Walker	1	O-627	0700-1900	Montague Camp
EMTF PASCOLLA	8/27	Cory Pascolla	1	O-533	0700-1900	Montague Camp
EMTF OLSON	8/27	Michael Olson	1	O-531	0700-1900	Klamath River Spike
AMBU PVT ADVENTURE MEDICS 2	9/8	Derwin Lara	2	E-139	0700-1900	Klamath River Spike
<del>AMBU PVT MOUNTAIN MEDICS 5</del> → T.A.G.	8/31	Alex Johansen	2	E-284	0700-1900	Oak Knoll
REMS 4 BENNETT	8/27	Kooby Bennett	4	E-302	0700-1900	Klamath River Spike
REAF DIETZLER	8/31	Dietzler, Karl	1	O-166	0700-1900	Montague Camp
REAF TERRY	9/3	Terry Adam	1	O-630	0700-1900	Montague Camp
REAF PARDUE	9/4	Thomas Pardue	1	O-637	0700-1900	Montague Camp
REAF BARRAGAR	9/4	Jotham Barragar	1	O-636	0700-1900	Montague Camp
REAF RADEMACHER	9/4	Erik Rademacher	1	O-634	0700-1900	Montague Camp
<b>EMPF Hammortree</b>	<b>9/27</b>	<b>James Hammortree</b>	<b>1</b>	<b>O-522</b>	<b>0700-1900</b>	<b>Montague Camp</b>
<b>T.A.G. → AMBU PVT Mountain Medics 4</b>	<b>9/2</b>	<b>Skylar Bainbridge</b>	<b>1</b>	<b>E-37</b>	<b>0700-1900</b>	<b>Montague Camp</b>
<b>HC2 PVT Grayback 13</b>	<b>9/31</b>	<b>Kristopher Gilliland</b>	<b>20</b>	<b>C-115</b>	<b>0700-1900</b>	<b>Montague Camp</b>

**6. Work Assignments:**

- Continue suppression repair on hand and dozer lines.
- Grade existing roads as identified by repair plan.
- Continue to gather and update repair data points for progress tracking.

**7. Special Instructions:**

- READs will check in and out with DIVS.
- \* Denotes resource available for initial attack.
- Private property boundry lines will be marked with a tricolor flagging system of white/red/green; red flagging denotes private land, green flagging de
- Orange and white candy striped flagging identifies equipment-avoidance areas.

\*\*\* BE ADVISED: Klamath Spike Camp will be closing by end of shift. All resources are to report to Montague Camp after shift.

\*\*\* BE ADVISED: Briefing on 08/28 will be held at 0800 at YICC Expanded Dispatch located at 1030 S. Main Street, Yreka, CA.

**8. Communications**

Name	Ch	Function	Rx Freq	Rx Tone	Tx Freq	Tx Tone	Notes
COMMAND	*** UTILIZE THE DESIGNATED COMMAND CHANNEL FOR THE GEOGRAPHICAL DIVISION YOU ARE WORKING IN ***						
VFIRE 24	12	TACTICAL	154.2725	T6-156.7	154.2725	T6-156.7	
A/G TAC	14	A/G TAC	167.0625	none	167.0625	none	
CALCORD	15	MEDICAL	156.0750	T6-156.7	156.0750	T6-156.7	Air Ambulance
AIRGUARD	16	AIRGUARD	168.6250	none	168.6250	T1-110.9	<Emergency Use Only>

**9. Prepared by: Name:**                      RESL                      RESL                      Signature:

ICS 204                      Date/Time: 8/26/2022    2200                      Personnel Count: 17

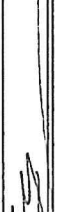
NIMS IAP

CONTROLLED UNCLASSIFIED INFORMATION/BASIC






# ICS 205 - INCIDENT RADIO COMMUNICATIONS PLAN

<b>1. Incident Name:</b> McKinney Incident Channels		<b>2. Date/Time Prepared</b> Date: 08/26/2022 Time: 1930		<b>3. Operational Period:</b> Date From: 08/27/22 Time From: 0700		Date To: 08/27/22 Time To: 1900		
<b>4. Communications</b>								
Ch#	Function	Name	Assigned To	Rx Freq	Rx Tone	Tx Freq	Tx Tone	Notes
1	COMMAND	NIFC C5	Div T/X	169.7500	T5-146.2	167.1000	T5-146.2	Buckhorn Bally LO
2	COMMAND	NIFC C12	DIV A/Z, D	173.0375	T5-146.2	167.3250	T5-146.2	Tom Martin Pk
3	COMMAND	NIFC C50	Montague	170.3125	T5-146.2	163.8250	T5-146.2	Butcher Hill
4	COMMAND	NIFC C52	DIV P	171.0875	T5-146.2	164.6000	T5-146.2	Bald Mtn
5	COMMAND	NIFC C53	DIV X	173.0250	T5-146.2	165.3625	T5-146.2	Gun Sight Pk
6	TACTICAL	NIFC T3	IA	168.6000	T5-146.2	168.6000	T5-146.2	TFR IA TAC
7	TACTICAL	NIFC T5	DIV A/Z	166.7250	T5-146.2	166.7250	T5-146.2	
8	TACTICAL	NIFC T6	Div P/D	166.7750	T5-146.2	166.7750	T5-146.2	
9	TACTICAL	NIFC T7	DIV T/X	168.2500	T5-146.2	168.2500	T5-146.2	
10	TACTICAL	VFIRE 22	Tree Abatement Group	154.2650	T6-156.7	154.2650	T6-156.7	
11	TACTICAL	VFIRE 23	Unassigned	154.2950	T6-156.7	154.2950	T6-156.7	
12	TACTICAL	VFIRE 24	Repair Grp	154.2725	T6-156.7	154.2725	T6-156.7	
13	A/G COMMAND	A/G CMD	A/G Command	166.9375	none	166.9375	none	
14	A/G TAC	A/G TAC	A/G Tactical	167.0625	none	167.0625	none	
15	MEDICAL	CALCORD	CALCORD	156.0750	T6-156.7	156.0750	T6-156.7	Air Ambulance
16	AIRGUARD	AIRGUARD	AIRGUARD	168.6250	none	168.6250	T1-110.9	<Emergency Use Only>
17								
18								
19								
20	AIRGUARD	AIRGUARD	AIRGUARD	168.6250	none	168.6250	T1-110.9	<Emergency Use Only>
<b>5. Special Instructions</b> CURRENT CLONE: MCK0820 McKinney Communications 916-798-5791								
<b>6. Prepared by (Communications Unit Leader):</b> Name: Chris Perry				Signature: 		Date/Time: 08/26/22 1930		

# ICS 205 - INCIDENT RADIO COMMUNICATIONS PLAN

CONTROLLED UNCLASSIFIED INFORMATION/BASIC

<b>1. Incident Name:</b> McKinney IA GROUP		<b>2. Date/Time Prepared</b> Date: 08/26/2022 Time: 1930		<b>3. Operational Period:</b> Date To: 08/27/22 Time To: 1900				
<b>4. Communications</b>								
Ch#	Function	Name	Assigned To	Rx Freq	Rx Tone	Tx Freq	Tx Tone	Notes
1	COMMAND	KNF ONG2	I/A Yeti	172.2750	none	164.7000	T2-123.0	Lake Mtn (KNF - Happy Camp)
2	COMMAND	KNFONG11	I/A Yeti	172.2750	none	164.7000	T11-114.8	Slater Butte (KNF - Happy Camp)
3	COMMAND	KNF BLK1	I/A McKinney	169.6375	none	168.7750	T1-110.9	Mase Mtn (KNF - Oak Knoll)
4	COMMAND	KNF BLK2	I/A McKinney	169.6375	none	168.7750	T2-123.0	Lake Mtn (KNF - Oak Knoll)
5	COMMAND	KNFBLK10	I/A McKinney	169.6375	none	168.7750	T10-107.2	Collins Baldy (KNF - Oak Knoll)
6	TACTICAL	NIFC T2	I/A Tac Primary	168.2000	none	168.2000	none	
7	TACTICAL	R5 T5	I/A Tac Secondary	167.1125	none	167.1125	none	
8	COMMAND	KNF RPT2	KNF Dispatch	171.5250	none	165.4125	T2-123.0	Lake Mtn. (KNF)
9	COMMAND	KNFRPT11	KNF Dispatch	171.5250	none	165.4125	T11-114.8	Slater Butte (KNF)
10	IA-AG	R5 A/G 43	A/G Primary	167.6000	none	167.6000		KNF I/A - Air to Ground
11	A/G CMD	MCK AG CMD	A/G Command	166.9375	none	166.9375	none	McKinney A/G Command
12	A/G TAC	MCK AG TAC	A/G Tactical	167.0625	none	167.0625	none	McKinney A/G Tactical
13	A/G CMD	YET AG CMD	A/G Tactical	168.4000	none	168.4000	none	Yeti A/G
14	COMMAND	RIVER RPT	I/A McKinney	172.2500	none	165.0750		River RPT (Tone 2,7,10)
15	MEDICAL	CALCORD	Medical	156.0750	T6-156.7	156.0750	T6-156.7	Air Ambulance
16	AIRGUARD	AIRGUARD	EMERGENCY	168.6250	none	168.6250	T1-110.9	FOR EMERGENCY ONLY
17								
18								
19								
20	AIRGUARD	AIRGUARD	EMERGENCY	168.6250	none	168.6250	T1-110.9	FOR EMERGENCY ONLY
<b>5. Special Instructions</b>								
CURRENT CLONE: I/A 0820								
McKinney Communications 916-798-5791								
<b>6. Prepared by (Communications Unit Leader):</b> Name: Chris Perry			Signature: 					
ICS 205 - CONTROLLED UNCLASSIFIED INFORMATION/BASIC			Date/Time: 08/26/22 1930					





<b>AIR OPERATIONS SUMMARY 220</b>		Prepared By: JoAnn Overacker	Prepared: 08/26/2022	Prepared Time: 14:00
<b>1. MCKINNEY</b>		<b>2. OPERATIONAL PERIOD</b> 08/27/2022		<b>SUNRISE:</b> 06:29
		<b>START TIME:</b> 07:00	<b>END TIME:</b> 21:00	<b>SUNSET:</b> 19:55

**3. REMARKS** (Safety Notes, Hazards, Air Operations Special Equipment, etc.).  
 Ensure all aircraft have the IA Frequency Command "SKU Local" 151.3250 RX, 159.3600 TX  
 Tone 1- (110.9) and Tone 2- (123.0)  
 \*\*A/G CMD Cal Fire 151.220 Tone Guarded w/ Tone 16- (192.8)  
 \*\*Cut off time for ordering aircraft is 19:30.

6. PERSONNEL	NAME	PHONE #	7. FREQUENCIES	AM	FM	8. FIXED-WING Avail/ Type/ Make-Model/ N#/ Base
AOBD	JoAnn Overacker	209-559-1617	A/A Fixed Wing		166.6000	AIRTANKERS, SEATS, AIR ATTACK
ASGS	Brent Ohlwiler	949-633-1365	A/A Rotor Wing	127.0250		ATGS- AA-05 available at Siskiyou Airport for I.A.
HEBM	Josh Wilson	530-356-9892	A/G Command		166.9375	
HEBM(t)	John Mears	530-949-0412	A/G Tactical		167.0625	
			Deck		163.1000	
			CALCORD		156.0750 (TONE 6: 156.7)	
			TOLC	123.0250		*Email daily cost sheets to: Mckinneyhelibase2022@gmail.com
			Air-Guard		168.6250 (110.9 TX)	*Email shift tickets and times to: 2022.mckinney.finance@firenet.gov

**9. HELICOPTERS**

FAA N#	TYPE	MAKE/ MODEL	BASE	START	AVAIL	REMARKS	FAA N#	TYPE	MAKE/ MODEL	BASE	START	AVAIL	REMARKS
73TW	1	UH60	Siskiyou	07:00	08:30	Bucket	H-506	2	Bell 205++	Siskiyou	07:00	08:30	Bucket
161KA	1	KMAX	Siskiyou	07:00	08:30	Bucket	N14HX	3	Bell 407	Siskiyou	07:00	08:30	Bucket

*JoAnn Overacker*

# MCKINNEY KNF-6177

## INTERAGENCY IA AGREEMENT

MCKINNEY IC	IMT12	JAMES ARAGON	928-486-0450
MCKINNEY AOB	IMT12	JOANN OVERACKER	209-559-1617
KNF AVIATION CONTACT	KNF AVIATION OFFICER	TYLER DETRICK	530-925-9668
CAL FIRE IA CONTACT	SKU CONTACT	DARRYL LAWS	530-598-2601
SKU ECC	YICC DISPATCH	ON DUTY CAPTAIN	530-842-7066
KNF ECC	YICC DISPATCH	ON DUTY CAPTAIN	530-841-4300

- New starts within the McKinney TFR boundaries will be reported to the Yreka Interagency Command Center. YICC will determine jurisdiction and appropriate response.
- YICC will coordinate with AOB and McKinney Air Attack for aviation response to new starts within the TFR regardless of agency. Aviation Frequencies will remain on McKinney frequencies for Air Tactics and TFR victor.
- If jurisdiction of the new start is determined to be under Siskiyou Unit Protection or within the Mutual Threat Zone (5 miles) the Air to Ground, Command and Ground Tactical frequency will be assigned as local IA frequencies. All other aviation frequencies will remain on TFR/ McKinney team frequencies.
  - o AIR TACTICS – 166.6000
  - o VICTOR- TFR: 118.7250, ROTOR: 127.0250
  - o AIR TO GROUND CMD – CDF A/G 1 – 151.2200 (T16 TX AND RX)
  - o COMMAND– SKU LOCAL: RX-151.3250 TX-159.3600
  - o GROUND TACTICAL – CDF TAC (MULTIPLE)
- If jurisdiction of the new fire start is on the Klamath National Forest– Federal Protection Area (MTZ is the exception) the team will take action and all radio frequencies will remain the same.
  - o AIR TACTICS – 166.6000
  - o VICTOR- TFR: 118.7250, ROTOR: 127.0250
  - o AIR TO GROUND CMD – 166.9375
  - o AIR TO GROUND TAC –167.0625

# **COVID-19 PREVENTION INFORMATION** **MAINTAINING A HEALTHY WORKFORCE**

from the COVID Advisor Team

All fire personnel are susceptible to contracting COVID-19. The health and well-being of all personnel must be a priority throughout the fire season. **Mask use, social distancing, and good hygiene** will support the health of fire personnel and are important ways to **prevent the spread of COVID-19 and maintain the health of all fire personnel.**

## **Self-Awareness/ Daily Health Screening**

**Separate yourself from others and notify your supervisor if you experience COVID-19 related symptoms** (fever or chills, cough – more than expected, shortness of breath or difficulty breathing, fatigue, muscle or body aches, headache, new loss of taste or smell, sore throat, congestion or runny nose, nausea or vomiting, diarrhea). Supervisors will use COVID precautions and facilitate COVID testing at the identified COVID testing locations.

## **COVID-19 Testing availability – (2) locations**

**McKinney Base Camp** (430 E. Prather St.) - **Adventure Medics**

**Klamath River Spike Camp** (28017 Hwy 96) - **Mountain Medics**

Priorities for testing will be for those with COVID-related symptoms and those with COVID exposure.

## **Sanitary and Personal Hygiene Practices**

Rigorous sanitary practices are important for reducing the transmission of infectious diseases. All personnel should cover their coughs and sneezes. Perform proper hand hygiene including handwashing or hand sanitizer use after touching potentially contaminated surfaces, removing face coverings, after using the restroom, and before eating or putting anything in their mouth.

## **Mask Wearing**

Mask wearing will be required when Siskiyou County community level is high. The Siskiyou County community level for the week of August 22, 2022 – August 28, 2022 is **Medium.**



## **Local Government Resources on CFAA**

If you are demobing and there is no OES AREP there:

- Have the FSC or IC review and sign your 42s
  - You give the incident the pink copy
  - You keep the gold copy
- You mail the white and green (if it has a green) to OES Headquarters per the instructions on the 42

**OES JOB AIDS, FORMS, F-42 SAMPLES AND  
CFAA AGREEMENT**



**Your OES Fire & Rescue Assistant Chief  
Patrick Titus  
916-634-9225**

## The Five-D System for Effective Fireline Waterbars

To make effective waterbars, use the 5-D System: **D**istance, **D**iagonal, **D**ivert, **D**ischarge, and **D**issipate.

**Distance:** Waterbars must be placed the proper distance apart, based on slope. This keeps the area that accumulates runoff small enough to prevent damage. The table below gives the maximum distance between waterbars, or between a waterbar and the next upslope drainage break.

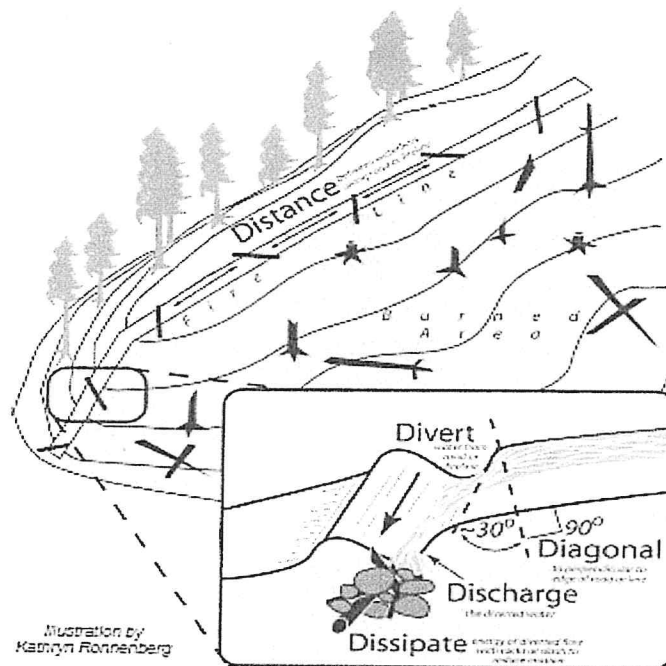
**Diagonal:** Don't bully the flow, lead it. Waterbars built directly across a fireline tend to fail. Waterbars built diagonal to the fireline lead the water off and work better. A simple rule is to build them at 30 degrees off perpendicular (see the illustration below).

**Divert:** A good waterbar will divert the water off the fireline. To do this the waterbar must be deep enough to handle all the flow for as long as it's needed. Excavation is much better than fill in making a durable and effective waterbar (a ditch or a dip beats a dike).

**Discharge:** Another feature of a good waterbar is that it will discharge the flow. A good waterbar is not a dam, it must have an open outlet.

**Dissipate:** Finally, a good waterbar should dissipate the flow just below the outlet to exhaust its eroding power and cause it to filter into the soil. This may require placing slash, rock, or debris below the outlet.

Fireline slope %	Maximum Distance Apart (feet)	<i>Recommended spacing for waterbars on firelines. Waterbars should be no further apart than this, but they may be closer. When in doubt, put in more. From: USDA-Forest Service, "Sale Administrator's Handbook"</i>
1-6.....	300	
7-9.....	200	
10-14.....	150	
15-20.....	90	
21-40.....	50	
41-60.....	25	



Reference: Hauge, C.J., M.J. Furniss and F.D. Euphrat. 1979. *Soil erosion in California's Coast Forest District*. California Geology, June, 1979

## Training Specialist Message

All training records must be Closed by end of shift today

Here's how:

### At the end of your assignment:

1. **Trainee:** Complete the exit interview form. Use the exit interview QR code to access the document.



Trainee Exit Interview

2. **Trainer:** Fill in the Position Task Book as completely as possible for this incident.

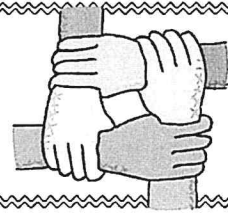
3. **Trainer:** Complete the ICS 225 performance evaluation and discuss with your Trainee. Make sure it's signed by both the Trainer and Trainee. Take a picture/copy of the ICS 225 and send it to [imt2training@gmail.com](mailto:imt2training@gmail.com)

The Training Specialist will send the training documents to the email address you provided. For training related questions, call/text Dominic Panno (TNSP) at 530-913-8251 or email-[imt2training@gmail.com](mailto:imt2training@gmail.com).





## Human Resource Message



### **All I really need to know I learned in Kindergarten**

by Robert Fulghum

Wisdom is not obtained at the top of the graduate-school mountain, it was learned in the sand pile out on the playground in kindergarten. These are the things Robert Fulghum learned:

1. Share everything.
2. Play fair.
3. Don't hit people.
4. Put things back where you found them.
5. Clean up your own mess.
6. Don't take things that aren't yours.
7. Say you're sorry when you hurt somebody.
8. Wash your hands before you eat.
9. When you go out into the world, watch for traffic, hold hands and stick together.

**Need to speak with an HRSP? Please contact  
Linda Overton, HRSP Co-Coordinator  
[loverton@usda.gov](mailto:loverton@usda.gov) or 707-373-7631**

## FINANCE MESSAGE

<b>Fire Name:</b> McKinney
<b>Fire Number:</b> CA-KNF-006177
<b>Accounting Code:</b> P5 PX2F (0505)
<b>Email:</b> <a href="mailto:2022.mckinney.finance@firenet.gov">2022.mckinney.finance@firenet.gov</a>

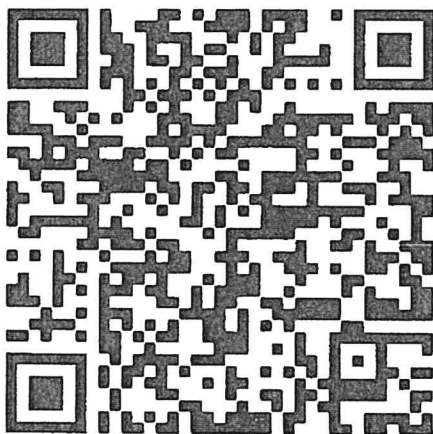
### Finance Documents Needed upon "Check In" (If Not Already Submitted):

Please email these documents or scan the QR Code below, attach & submit.			
<b>FED Equipment/ Crews:</b> <ul style="list-style-type: none"> <li>• Manifest - showing employment type (GS or WG) or AD rates if applicable</li> </ul>	<b>Overhead:</b> <ul style="list-style-type: none"> <li>• AD/Casual Hire Form</li> <li>• If regular Agency please ensure "GS" or "WG" is written on your first CTR</li> </ul>	<b>Contract Equipment/ Contract Crews:</b> <ul style="list-style-type: none"> <li>• Agreement</li> <li>• Manifest</li> <li>• Resource Order</li> <li>• Inspections</li> </ul>	<b>Cooperator:</b> <ul style="list-style-type: none"> <li>• Cooperative Agreement</li> <li>• Resource Order</li> </ul>

### When emailing finance:

- Overhead/FED: *subject line:* TIME, Resource #, Resource Name
- Equipment/Cooperator: *subject line:* EQTR, Resource #, Resource Name

**Prior to your demob date, please contact Finance *via email* to expedite the demob process. Upon submittal of your final CTR/Shift Tickets, Finance will email you copies of your pay documents for review and signature.**








# Mckinney ICP

430 E Prather St, Montague, CA 96064

Effective Thursday 8/25/22 1000



- |                              |   |
|------------------------------|---|
| 1. Operations/Safety/Air OPS | 12. DEMOB/Check-in/Resources  |
| 2. IC/Liaison                | 13. Overflow  |
| 3. ITSS                      | 14. Planning Meetings   |
| 4. Planning/Situation        | 15. READS   |
| 5. Medical                   | 16. Overflow  |
| 6. PIO                       | 17. Human Resources   |
| 7. GIS                       | 18. COMMS   |
| 8. Copy Trailer              | 19. COMMS   |
| 9. Facilities                |  Cloning/Comms DEMOB |
| 10. Cost/Claims/FSC          |  Medical             |
| 11. Finance                  |  Dumpster            |

**\*\*\*Safety Message\*\*\***

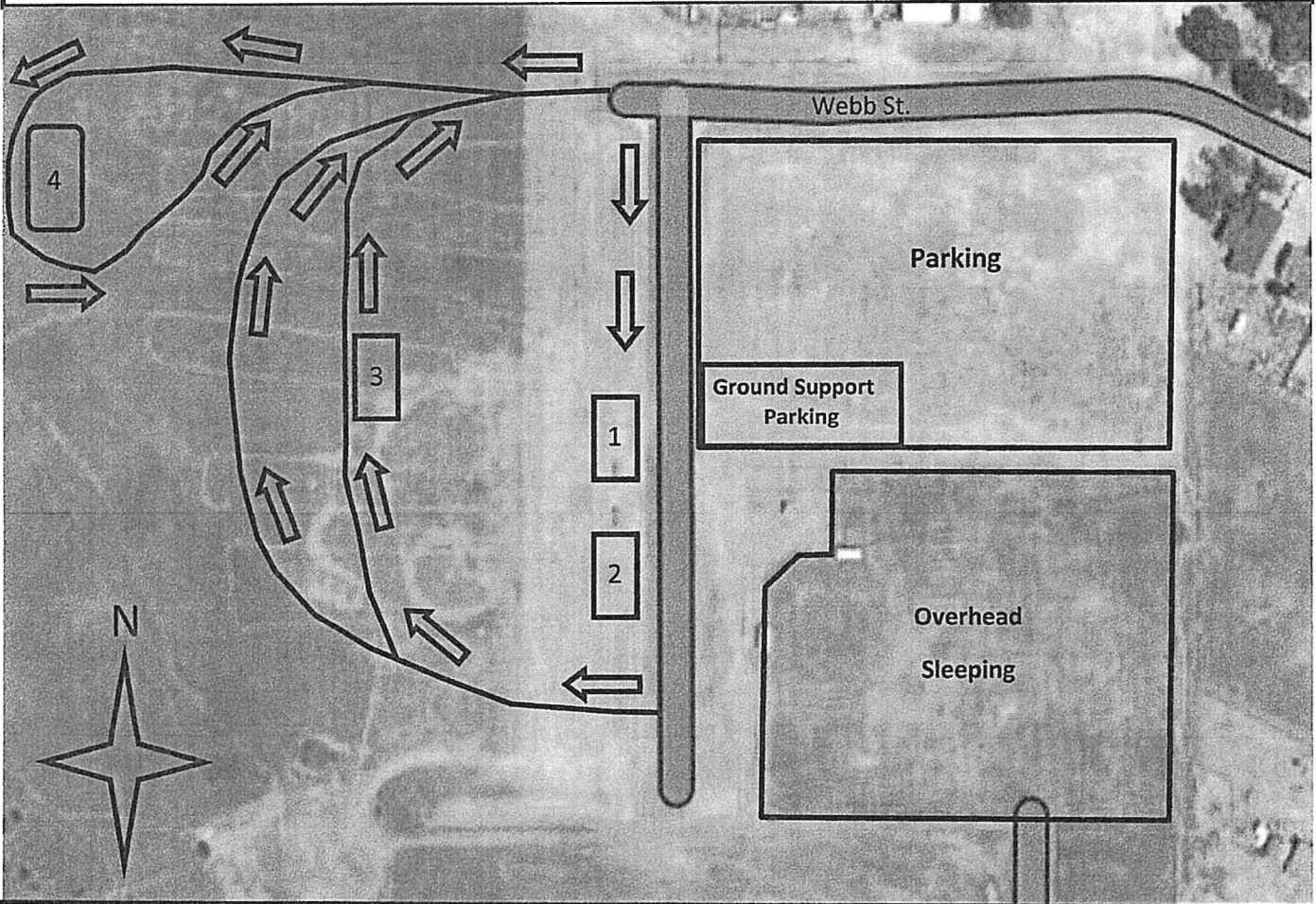
School in session.

Watch for pedestrians.

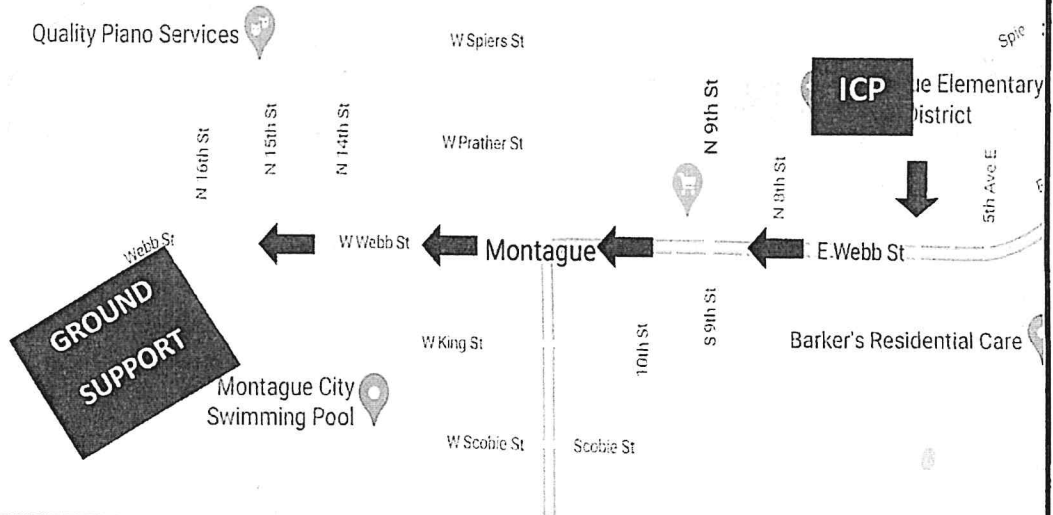
Reduce speed in residential areas.

# Mckinney Ground Support

South of 650 Webb Street, Montague, CA 96064



1. Mechanic/Inspection
2. Ground Support
3. Weed Wash
4. FUEL



## LOGISTICS TIMES

- **Laundry:** Last drop off 1000 Friday. Pick up Saturday morning
- **Showers:** Last showers 0800 Sunday
- **Fuel Trucks:** Both trucks off at 1600 Saturday
- **Weed Wash:** Closes at 1400 Saturday
- **Mechanics:** All but one off at 1600 Saturday
- **Last Mechanic:** Off at 2000 Saturday
- **Vehicle/Equipment Inspections:** Close at 2000 Saturday
- **Last Hot Meal from Caterer:** Breakfast Sunday, lunches available
- **Klamath River Spike:** Closed by end of shift Saturday. All remaining resources are to report to Montague ICP at end of shift.



**MCKINNEY FIRE  
US-CA-KNF-006177  
DEMOB LIST**

YOU CAN PICK UP YOUR CHECKOUT SHEET FROM DEMOB ANY TIME AFTER 0730 ON YOUR DEMOB DAY. PLEASE ARRIVE AT FINANCE AT THE TIME LISTED BY YOUR NAME.

*THANK YOU*

**Saturday, August 27, 2022**

RO #	TYPE	NAME	TIME	RO#	TYPE	NAME	TIME
<u>CREWS</u>				<u>OVERHEAD</u>			
C-107	CRWC	PLACER 7	0730	O-222	SEC2	HARDIN, ANTHONY	0950
C-115	CRW2	GRAYBACK 13	0730	O-373	SEC1	SIMS, JOHN	0950
C-123	CRW2	NORTH PACIFIC 1	1515	O-498	EQPM	CONLON, JAMES	1000
C-118	CR2I	RED HAWK	1630	O-514	EMPF	AVIS, BEN	1000
				O-527	EMTF	BAKER, MATT	1010
				O-546	HEQB	VETROCK, SHAD	1010
				O-547	HEQB	CROW, KYLE	1020
				O-555	FACL	ZEPEDA, MARCUS	1020
				O-556	RADO	BATTAGLIA, PAM	1030
				O-650	FBAN	COOK, JOHN	1030
				O-574	SEC1	CHRISTIANSON, P.	1040
				O-612	HEQB	MATHESON, RYAN	1525
				O-541	HEQB	OOSAHWE, PHILLIP	1525
				O-367	TFLD	WEST, RANDALL	1535
<u>EQUIPMENT</u>							
E-141	HND1	EXPEDITORS BY LINDALE	0800				
E-183	DZR3	CARLSONS	0800				
E-211	LITR	LIGHTING	0820				
E-225	DZR2	BERRY	0820				
E-234	MBM2	PETERS	0840				
E-281	EXC2	LONESTAR ENT.	0840				
E-286	MESV	ADVENTURE MEDICS	0900				
E-302	MESV	ADVENTURE MEDICS	0900				
E-336	FUT2	ED STAUB & SONS	0920				
E-401	EXC2	PETERS	0920				
E-404	EXC3	JOHNSON	0940				
E-347	MSFU	PORT'S ON-SITE SVC	0940				
E-124	CLSU	JA COPY SERVICES	1500				
E-231	DZR2	SPRATT EXCAVATING	1520				
E-223	HOSU	KIT CONTRACTING	1600				
E-277	WTS2	H&H FEEDERS	1600				
E-279	WTS2	HURLIMANN, FRANK	1620				
E-397	ENG2	MONTAGUE - 515	1620				
E-398	ENG3	J3 CONTRACTING	1640				

**MCKINNEY DEMOB PHONE # 435-840-5432**





**MCKINNEY FIRE  
US-CA-KNF-006177  
DEMOb LIST**

**NOTE: STARTING ON 08/28/22 ICP AND DEMOB WILL BE AT  
THE HOLIDAY INN EXPRESS  
707 MONTAGUE ROAD, YREKA, CA**

YOU CAN PICK UP YOUR CHECKOUT SHEET FROM DEMOB ANY TIME AFTER 0730 ON YOUR DEMOB DAY. PLEASE ARRIVE AT FINANCE AT THE TIME LISTED BY YOUR NAME.

*THANK YOU*

**Sunday, August 28, 2022**

RO #	TYPE	NAME	TIME	RO#	TYPE	NAME	TIME
<u>EQUIPMENT</u>				<u>OVERHEAD</u>			
E-119	MSFU	ACTION SANITARY- S-1	0730	O-327	RADO	WENDT, SUSAN	0815
E-123	MESU	ADVENTURE MEDICS	0730	O-375	FACL	MONTGOMERY, L.	0825
E-126	STMH	A.B. WILSON EQUIP.	0745	O-486	BCMG	MALKY, AFRAM	0825
E-148	STK1	LONESTAR ENT.	0745	O-522	EMPF	HAMMORTREE, J.	0835
E-344	SLP2	STORM SERVICES	0800	O-531	EMTF	OLSON, MICHAEL	0835
E-353	MSFU	ALAN & DARYL'S - S239	0800	O-533	EMTF	PASCOLLA, CORY	0845
E-375	TNT1	ALL AMERICAN E SVCS	0815	O-539	IMET	LEBO JR, TERRENCE	0855
				O-559	EQTR	FOSTER, SHERISE	0855
				O-583	ITSS	WEBB, WALTER	0905

**MCKINNEY DEMOB PHONE # 435-840-5432**

# FIRELINE ORDER FORM

Date & Time order was placed:		Order # (DIVS + #)	Location & Time for delivery (DIV, LZ, DP, Lat Long)		Mode of Delivery
Point of Contact:			Lat:	Driver <input type="checkbox"/>	
			Long:	DIVS to pick up <input type="checkbox"/>	
Notes:		Elevation:		HELO <input type="checkbox"/>	
		Length of Longline required:			
Order received in Communications by (Name):					Time:
Order shipped to line by (Name): <span style="float: right;">(Send this sheet to the line with the order)</span>					Time:
#	Item				Amount
1	Hoselay Kit 1000': 10- 1½" Hose, 10- 1" Hose, 10- 1½" Gated wyes, 10-1½" x 1" reducers, 10-1" nozzles				
2	Mop up Kit: 20 - ¾" Hose, 10- 1½"x1" Reducers, 10- 1" x ¾" Reducers, 10- ¾" shutoffs, 10- ¾" wyes, 10- ¾" nozzles				
#	Item	Amount	#	Item	Amount
3	Hose (100') 1½"		33	Drip Torch	
4	Hose (100') 1"		34	Fusees, Boxes	
5	Hose (50') ¾"		35	FIREQUICK Hotshot Flares (12/Box)	
6	Nozzle, 1½"		36	FIREQUICK Stubby Flares (12/Box)	
7	Nozzle, 1"		37	FIREQUICK Chubby Flares (75/Box)	
8	Nozzle, garden ¾"		38	FIREQUICK Big Shot Flares (50/Box)	
9	Wye, Gated 1½"		39	Cartridge #6 purple (Box)	
10	Wye, Gated 1"		40	Batteries AAA, case	
11	Wye, Gated ¾"		41	Batteries AA, case	
12	Reducer, 1½ x 1"		42	Flagging, specify color:	
13	Reducer, 1" x ¾"		43	Water, 5 gallon Cubies	
14	Inline tee , 1½" x 1"		44	Water, Bottled Cases	
15	Foam 5 gallon container		45	Gatorade, Cases	
16	Backpack Pump		46	MRE's (12/Box)	
17	Pumpkin 1500/3000/6000 gallon		47	Heavy Mill Plastic	
18	Folda-Tank 1000/1500 gallon		48	Staple Gun with 1/2" staples	
19	Mark 3 Pump		49	Wrap, Structure 54" x 300'	
20	Mark 3 Pump Kit		50	ANYTHING NOT LISTED ABOVE :	
21	Pump, Lightweight		51		
22	Pump, Volume		52		
23	Sprinkler Kit (6 per kit)		53		
24			54		
25			55		
26			56	COVID Kit	
27	Chainsaw Kit		57	Bath in a bag each	
28	Bar Oil - gallons		58	Hygiene Kit	
29	2 Cycle oil (Pints)		59	Trash Bags, Box	
30	Gas Unleaded (Gallons)		60	Paper Towels each	
31	Diesel (Gallons)		61	Disenfectant bottle	
32	5 gallon fuel can (Empty)		62	Nitrile Gloves, specify size: L <input type="checkbox"/> XL <input type="checkbox"/> # Boxes	





## MEDICAL PLAN (ICS 206 WF) CIIMT 12

1. Incident Name				2. Operational Period				
<b>McKINNEY INCIDENT</b>				Date/Time: <b>08/27/2022 – 08/28/2022 (0700 - 0700)</b>				
<b>3. EMS / Ambulance Services/Aid Stations</b>								
Name	Location			Frequency/Phone		Advanced Life Support (ALS) Yes No		
ADVENTURE MEDICS MMSU	MONTAGUE ICP			909-762-9032		X		
MOUNTAIN MEDICS	KLAMATH RIVER SPIKE CAMP			909-762-9032		X		
<b>4. Air Rescue / Air Ambulance Services</b>								
Name	Phone			Type of Aircraft & Capability				
KERN COUNTY H407	McKINNEY COMMUNICATIONS			HELICOPTER, ALS, 24/7 – HOIST				
CHP H14	McKINNEY COMMUNICATIONS			HELICOPTER, ALS, 24/7 – HOIST				
MERCY AIR	McKINNEY COMMUNICATIONS			AIR AMBULANCE ALS, 24/7 – NO HOIST				
REACH	McKINNEY COMMUNICATIONS			AIR AMBULANCE ALS, 24/7 – NO HOIST				
PHI	McKINNEY COMMUNICATIONS			AIR AMBULANCE ALS, 24/7 – NO HOIST				
<b>5. Hospitals (all times estimated from incident location)</b>								
Name & Level	GPS Datum – WGS 84 Degrees Decimal Minutes		Travel Time Air Gnd		Phone	Helipad Yes No		Address
U.C. DAVIS MEDICAL CENTER (LVL 1)	Lat:	N. 38° 33.2963'	1.5 HRS	6 HRS	ER Direct Line: 916-734-2011	X		2315 Stockton Blvd Sacramento, CA 95817
	Long:	W. 121° 27.3918'						
ASANTE ROGUE VALLEY MEDICAL CENTER (LVL 2)	Lat:	N. 42° 19.0505'	20 MIN	2 HRS	ER Direct Line: 541-789-7116	X		2825 Barnett Rd. Medford, OR 97504
	Long:	W. 122° 49.8392						
MERCY MEDICAL CENTER (LVL 3)	Lat:	N. 41° 19.0943'	45 MIN	1.5 HRS	ER Direct Line: 530-926-9360	X		914 Pine St. Mt Shasta, CA 96067
	Lat:	W. 122° 19.2806'						
FAIRCHILD MEDICAL CENTER (LVL 4)	Lat:	N. 41° 43.167'	15 MIN	60 MIN	ER Direct Line: 530-841-6292	X		444 Bruce St. Yreka, CA 96097
	Long:	W. 122° 38.7483						
<b>6. Division / Crew Emergency Pre-Plan</b>								<i>Update and discuss with assigned resources daily.</i>
Fireline EMT / Medic's Division / Branch Location								
Air Hoist site location site: Lat: / Long: / Elevation:								
Helispot: Lat: / Long: / Elevation:								
<b>7. Prepared By (Medical Unit Leader)</b>			<b>8. Date/Time</b>		<b>9. Reviewed By (Safety Officer)</b>		<b>10. Date/Time</b>	
MEDL Gena Fowlkes 909-762-9032			08/26/2022 1600		SOF2 PAUL TOMPKINS 619-889-7533		08/26/2022 1600	
<i>Gena Fowlkes</i>					<i>Paul Tompkins</i>			

# MEDICAL PLAN (ICS 206 WF) CIIMT 12

Medical Incident Report																													
<p><b>FOR A NON-EMERGENCY INCIDENT, WORK THROUGH CHAIN OF COMMAND TO REPORT AND TRANSPORT INJURED PERSONNEL AS NECESSARY.</b></p> <p><b>FOR A MEDICAL EMERGENCY: IDENTIFY ON SCENE INCIDENT COMMANDER BY NAME AND POSITION AND ANNOUNCE "MEDICAL EMERGENCY" TO INITIATE RESPONSE FROM IMT COMMUNICATIONS/DISPATCH.</b></p>																													
<p><b>Use the following items to communicate situation to communications/dispatch.</b></p>																													
<p><b>1. CONTACT COMMUNICATIONS / DISPATCH</b> (Verify correct frequency prior to starting report)  <i>Ex: "Communications, Div. Alpha. Stand-by for Emergency Traffic."</i></p> <p><b>2. INCIDENT STATUS:</b> Provide incident summary (including number of patients) and command structure.  <i>Ex: "Communications, I have a Red priority patient, unconscious, struck by a falling tree. Requesting air ambulance to Forest Road 1 at (Lat./Long.) This will be the Trout Meadow Medical, IC is TFLD Jones. EMT Smith is providing medical care."</i></p>																													
Severity of Emergency / Transport Priority	<input type="checkbox"/> <b>RED / PRIORITY 1</b> Life or limb threatening injury or illness. Evacuation need is <b>IMMEDIATE</b> <i>Ex: Unconscious, difficulty breathing, bleeding severely, 2° – 3° burns more than 4 palm sizes, heat stroke, disoriented.</i> <input type="checkbox"/> <b>YELLOW / PRIORITY 2</b> Serious Injury or illness. Evacuation may be <b>DELAYED</b> if necessary. <i>Ex: Significant trauma, unable to walk, 2° – 3° burns not more than 1-3 palm sizes.</i> <input type="checkbox"/> <b>GREEN / PRIORITY 3</b> Minor Injury or illness. <b>Non-Emergency transport</b> <i>Ex: Sprains, strains, minor heat-related illness.</i>																												
Nature of Injury or Illness & Mechanism of Injury	Brief Summary of Injury or Illness <i>(Ex: Unconscious, Struck by Falling Tree)</i>																												
Transport Request	Air Ambulance / Short Haul/Hoist Ground Ambulance / Other																												
Patient Location	Descriptive Location & Lat. / Long. <i>(WGS84)</i>																												
Incident Name	Geographic Name + "Medical" <i>(Ex: Trout Meadow Medical)</i>																												
On-Scene Incident Commander	Name of on-scene IC of Incident within an Incident <i>(Ex: TFLD Jones)</i>																												
Patient Care	Name of Care Provider <i>(Ex: EMT Smith)</i>																												
<p><b>3. INITIAL PATIENT ASSESSMENT:</b> Complete this section for each patient as applicable (start with the most severe patient)</p> <p>Patient Assessment: See IRPG PAGE 106</p>																													
Treatment:																													
<p><b>4. TRANSPORT PLAN:</b></p> <p>Evacuation Location (if different): (Descriptive Location (drop point, intersection, etc.) or Lat. / Long.) Patient's ETA to Evacuation Location:</p>																													
Helispot / Extraction Site Size and Hazards:																													
<p><b>5. ADDITIONAL RESOURCES / EQUIPMENT NEEDS:</b></p> <p><i>Example: Paramedic/EMT, Crews, Immobilization Devices, AED, Oxygen, Trauma Bag, IV/Fluid(s), Splints, Rope rescue, Wheeled litter, HAZMAT, Extrication :</i></p>																													
<p><b>6. COMMUNICATIONS: Identify State Air/Ground EMS Frequencies and Hospital Contacts as applicable</b></p> <table border="1" style="width: 100%; border-collapse: collapse;"> <thead> <tr> <th style="width: 10%;">Function</th> <th style="width: 25%;">Channel Name/Number</th> <th style="width: 15%;">Receive (RX)</th> <th style="width: 20%;">Tone/NAC *</th> <th style="width: 15%;">Transmit (TX)</th> <th style="width: 15%;">Tone/NAC *</th> </tr> </thead> <tbody> <tr> <td>COMMAND</td> <td></td> <td></td> <td></td> <td></td> <td></td> </tr> <tr> <td>AIR-TO-GRND</td> <td></td> <td></td> <td></td> <td></td> <td></td> </tr> <tr> <td>TACTICAL</td> <td></td> <td></td> <td></td> <td></td> <td></td> </tr> </tbody> </table>						Function	Channel Name/Number	Receive (RX)	Tone/NAC *	Transmit (TX)	Tone/NAC *	COMMAND						AIR-TO-GRND						TACTICAL					
Function	Channel Name/Number	Receive (RX)	Tone/NAC *	Transmit (TX)	Tone/NAC *																								
COMMAND																													
AIR-TO-GRND																													
TACTICAL																													
<p><b>7. CONTINGENCY: Considerations:</b> If primary options fail, what actions can be implemented in conjunction with primary evacuation method? Be thinking ahead. .</p>																													
<p><b>8. ADDITIONAL INFORMATION:</b> Updates/Changes, etc. .</p>																													
<p><b>REMEMBER:</b> Confirm ETA's of resources ordered. Act according to your level of training. Be Alert. Keep Calm. Think Clearly. Act Decisively. .</p>																													