

Wednesday

INCIDENT ACTION PLAN MCKINNEY INCIDENT

CA-KNF-006177
P5PX2F (0505)



FIRE INFORMATION: 530-289-8920

2022.mckinney@firenet.gov

MEDIA REQUESTS: 530-918-8729



OPERATIONAL PERIOD

8/17/2022 0700

to

8/18/2022 0700

INCIDENT OBJECTIVES (ICS 202)

1. Incident Name: <p style="text-align: center;">McKinney</p>	2. Operational Period:	Date From: 8/17/2022 Time From: 0700	Date To: 8/18/2022 Time To: 0700
--	-------------------------------	---	-------------------------------------

3. Objective(s):

Leaders Intent
 Implement a full suppression strategy on the McKinney Fire. Values at risk include human safety, private timberlands, communities, critical infrastructure and associated improvements. Apply tactics that offer the highest probability of success.

Management Objectives

- Provide for firefighter and public safety through hazard recognition and application of the risk management process.
- Coordinate all public information with CALFIRE and the Klamath National Forest to provide timely and continuous information to affected agency partners, cooperators, and the public.
- Work with Resource Advisors to implement the fire suppression repair plan.
- Provide initial attack capability for the Klamath National Forest on the Oak Knoll and Scott River Ranger Districts.

Leaders Intent

Provide the highest level of customer service to all involved with or impacted by the McKinney Fire. Ensure transparent, timely and accurate communication at all levels of the incident and strengthen relationships with cooperators. All incident assigned personnel should be prepared to take appropriate actions regarding:

- Personal safety and the safety of others, including driving slowly and defensively.
- Fatigue management by taking breaks and maintaining work/rest cycles.
- Limiting exposure to infectious disease by implementing Center of Disease Control, California Department of Public Health, and agency guidelines.
- Professional behavior, and timely/effective communication.

Control Objectives

- Keep the McKinney Fire contained to the current fire perimeter to prevent the fire from spreading to private property, surrounding communities, and other values at risk.

5. Site Safety Plan Required? Yes No

Approved Site Safety Plan(s) Located at:

6. Incident Action Plan

<input checked="" type="checkbox"/> ICS 203	<input checked="" type="checkbox"/> ICS 215A	<input checked="" type="checkbox"/> Line Order Form	<input checked="" type="checkbox"/> READ Message
<input checked="" type="checkbox"/> ICS 204	<input checked="" type="checkbox"/> ICS 220	<input checked="" type="checkbox"/> Training Message	<input checked="" type="checkbox"/> COVID Info
<input checked="" type="checkbox"/> ICS 205	<input checked="" type="checkbox"/> Facility Maps	<input checked="" type="checkbox"/> Travel Map	<input checked="" type="checkbox"/> CALFIRE Message
<input checked="" type="checkbox"/> ICS 206	<input checked="" type="checkbox"/> Weather Forecast	<input checked="" type="checkbox"/> Demob Plan	<input checked="" type="checkbox"/> OES Message
<input checked="" type="checkbox"/> ICS 208	<input checked="" type="checkbox"/> Fire Behavior	<input checked="" type="checkbox"/> Finance Message	<input checked="" type="checkbox"/> ICS 214

7. Prepared By: PSC Position/Title: PSC Signature: Walter J. Hays

8. Approved by Incident Commander: IC Signature: Jim Snow IEGT

ICS 202 NIMS IAP

ORGANIZATION ASSIGNMENT LIST (ICS 203)

1. Incident Name: McKinney		2. Operational Period: Date From: 8/17/2022 Time From: 0700		Date To: 8/18/2022 Time To: 0700	
3. Incident Commander(s) and Command Staff:			7. Operation Section:		
IC/UC's	James Aragon, Greg Roath, Jim Snow(t)	Day Operations	John Owings, Kent Cunningham, Jason Flores(t)		
Deputy	Alan Taylor	Planning Operations	Chris St. Pierre, JT Sohr(t)		
Safety Officer	Paul Tompkins, Rob Hickok, Shannon Banks	Night Ops			
Information Officer	Mark Thibideau, Stephanie Bishop	Branch	X	Greg Overacker, Rob DeCamp(t)	
Liaison Officer	Don Smith	Division/Group	A	Ryan Waggoner, John Kinder(t)	
4. Agency/Organization Representatives:		Division/Group	D	Paul Naman	
Klamath NF AADM	Rachel Smith	Division/Group			
Klamath NF AREP	Drew Stroberg	Division/Group			
District Ranger Happy Camp	Roberto Beltran	Division/Group			
Lead Resource Advisor	Joshua Courter	Branch	XX	Rob Szczepanek	
Cal Fire	Shawn Raley	Division/Group	P	Rob Noxon, Steve Rushing(t)	
Cal OES Fire/Rescue	Pat Titus	Division/Group	Q/R/T	Shawn Baker, Steve Kovacs	
Cal OES EM	Robert Goyeneche	Division/Group	REPAIR GROUP	Brandon Hughes	
Cal OES LE	Celeste Fowler	Division/Group			
Cal Trans	Betty Bucher	Division/Group			
Yreka CHP	Stacy Barr	Branch	IA	Mike Koontz	
Siskiyou Sheriff	Jeremiah Larue	Division/Group	KLAMATH IA	Ed Willy	
Yreka PD	Chief Gilman	Division/Group	MONTAGUE STAGING		
Timber Representative	Darren Quigley	Division/Group			
Board of Supervisors	Ray Haupt	Branch	NIGHT		
CCC AREP	Lisa Setzer	Division/Group	A/D	Brian Riley	
Pacific Power	Tyler Averyt	Division/Group	P/Q/R/T	Troy Thomas	
5. Planning Section:		Division/Group			
Chief	Steve Anderson, Shilo Springstead(t)	Division/Group			
Deputy	Walter Herzog	Branch	IV	Keith Cummings (12)	
Resources Unit	Ryan Resnick, Kelly Smyth(t), John Hamer(t)	Division/Group	V/W/X	Scott Marglin (12)	
		Division/Group	Y/Z	Casey Cohen (12)	
Situation Unit	Ray Rook, Jeremy Fauskee	Division/Group			
Demob Unit	Chris Adams	Branch	Supp. Repair	Jon Jones (12)	
HRSP	Adrian Escobedo	Division/Group	Supp Repair 1	Pete Feller (12)	
GISS	Dawn Hutchinson, Eric Ball(t)	Division/Group	Supp Repair 2	Damon Denman (12)	
Fire Behavior Analyst	Nick Elmquist	Division/Group	Supp Repair 3	Jeremy Ravenscroft (12)	
Incident Meteorologist	Terry Lebo, Sam Roberts(t)	Division/Group			
Status Check In	Eric Kuntz(t)	Division/Group			
Training Tech Spec	Dominic Panno	Division/Group			
Info Tech. Support Specialist	Brett Davidson, Daren Howard	Division/Group			
Documentation Unit	Janet Grisedale	Air Operations Branch			
6. Logistics Section		Air Operations		JoAnn Overacker	
Chief	David Alicea	Air Tactical Group Supervisor		Derek Wheeler	
Deputy Logs	Peter Fitzmaurice, Jim Neumann	Air Support Group Supervisor			
Ordering Manager	Edward Jensen(t)	Helibase Manager			
Supply Unit	Patricia Dutrey	8. Finance/Administration Section:			
Facilities Unit	Arthur Curley	Chief	David Dukart		
Security Manager	Michael Carpenter	Time Unit	Rebecca Lang, Cara Scott		
Ground Support Unit	Chris Syler	Equipment Time	Ryan Kirtland(t)		
Communications Unit	Chris Perry	Personnel Time	Amy VanAtta(t)		
Base Camp Manager	Juan Mota, Joe De La Torre	Comp/Claims Unit	Debra McClure(t)		
Medical Unit	Brandon Bennewate, Gena Fowlkes, Nic Stepanian	Cost Unit			
		IBA	Jackie Stimach		
Food Unit Leader	Mikeal Gates				
Prepared By: Name:	PSC	PSC	Signature: <i>Walter J. Fauskee</i>		
ICS 203	Date/Time:	8/16/2022	2000 hours		NIMS IAP



Fire Weather Forecast

Wednesday AUG 17, 2022



FORECAST NO: 16
 PREDICTION FOR: Wed Aug 17, 0700/Thu Aug 18, 0700
 ISSUED: 2000, Aug 16, 2022

NAME OF FIRE: McKinney
 UNIT: Klamath N.F.
 Incident Meteorologist: Sam Roberts

***** RED FLAG WARNING (DRY LIGHTNING), CHANCE T'STORM, HEAT ADVISORY, VERY HOT AND UNSTABLE*****

DISCUSSION: Red Flag Warning in effect from 1200-2300. Heat Advisory remains in effect. Cloud cover from nearby storms could limit heating to below heat advisory levels. Moisture increases today and we see an increase in coverage of thunderstorms. Dry lightning is a significant concern but models are trending wetter, meaning we may also see wetting rains. Thunderstorm chances will be in place from this morning through Thursday morning.

WEDNESDAY: RED FLAG WARNING (DRY LIGHTNING), CHANCE T'STORM, HEAT ADVISORY, VERY HOT AND UNSTABLE.

- **WEATHER:** Chance of thunderstorms (dry lightning). Slight chance of wetting rain. Sunny, then becoming more cloudy through day with breezy afternoon winds. Areas that stay cloud free will be very hot, dry, unstable, and low RH.
- **WIND (EYE LEVEL):** Sheltered and smoked in areas: Downslope/down valley 1-3 mph through 1400 then upslope 3-6 mph. Ridges, unsheltered areas, wind-aligned drainages: east 3-6 mph through 1200, then west-northwest 5 to 10 mph gusts to 18 mph. However, winds may shift from out of the southeast as thunderstorms pass through the area, as thunderstorms will be moving from southeast to northwest. **Erratic wind gusts to 50 mph possible near any thunderstorms.**
- **CHANCE OF WETTING RAIN:** 15%. LAL (Lightning Activity Level): 6
- **RAIN AMOUNTS:** 0.10" to 0.25"
- **MAX TEMPERATURES:** 103-107 bottom and clear areas, 89-94 highest ridgetops and smoked in areas.
- **MIN RH:** 10-20% bottom and clear areas, 15-25% top and smoked in areas. Areas that receive wetting rain will have higher RH values.
- **INVERSION:** Moderate mid-slope inversion and secondary inversion at 5,000 feet mixes out by 1300. Smoke inversion may mix out across smoked in areas.

WEDNESDAY NIGHT: RED FLAG WARNING, CHANCE T'STORM (DRY LIGHTNING), SLIGHT CHANCE WETTING RAIN.

- **WEATHER:** Red Flag Warning through 2300. Chance of thunderstorms overnight. Otherwise, dry and partly cloudy, gusty west-northwest winds early, then becoming light and easterly after midnight. Poor to moderate RH recovery above 5000 feet.
- **WIND (20 FT):** Sheltered areas: Downslope/down valley 2-4 mph. Ridges, unsheltered areas, wind-aligned drainages: west-northwest 5 to 10 mph gusts to 18 mph through 2200, However, winds may shift from out of the southeast as thunderstorms pass through the area, as thunderstorms will be moving from southeast to northwest. Then, becoming easterly 3 to 6 mph late in the night. **Erratic wind gusts to 50 mph possible near any thunderstorms.**
- **CHANCE OF WETTING RAIN:** 15%. LAL (Lightning Activity Level): 6
- **RAIN AMOUNTS:** 0.10" to 0.25"
- **MIN TEMPERATURES:** 62-67 bottom, 69-74 top.
- **MAX RH:** 50-60% bottom, 33-43% top if dry. RH recovery will be higher for areas that receive a wetting rain.
- **INVERSION:** Weak to moderate developing near mid-slope and secondary inversion at 5,000 feet.

THURSDAY: HEAT ADVISORY, SLIGHT CHANCE T'STORM (POSSIBLE DRY LIGHTNING), SLIGHT CHANCE WETTING RAIN.

- **WEATHER:** Heat Advisory through 2300. Slight chance thunderstorm through the day (possible dry lightning). Slight chance of wetting rain. Otherwise, mostly sunny to partly cloudy, dry, very hot and unstable, and breezy afternoon winds.
- **WIND (EYE LEVEL):** Sheltered and smoked in areas: Downslope/down valley 1-3 mph through 1400 then upslope 3-6 mph. Ridges, unsheltered areas, wind-aligned drainages: east 3-6 mph through 1200, then west-northwest 5 to 10 mph gusts to 18 mph through 2000. **Erratic wind gusts to 50 mph possible near any thunderstorms.**
- **CHANCE OF WETTING RAIN:** 15%. LAL (Lightning Activity Level): 6
- **RAIN AMOUNTS:** 0.10" to 0.25"
- **MAX TEMPERATURES:** 101-106 bottom and clear areas, 88-93 highest ridgetops and smoked in areas.
- **MIN RH:** 12-22% bottom and clear areas, 15-25% top and smoked in areas.
- **INVERSION:** Weak to moderate mid-slope inversion and secondary inversion at 5,000 feet mixes out by 1300. Smoke inversion may mix out across smoked in areas.

Extended outlook: Friday: Mostly dry, only a 5% chance for a shower or thunderstorm. Otherwise, mostly sunny, very hot and dry. Breezy afternoon winds and we become unstable. Highs 87-104. Minimum humidity: 15-25%. Winds west-northwest 5-10 mph with gusts to 18 mph. **Saturday through Monday:** Mostly dry, only a 5% chance of shower or thunderstorm. Otherwise, mostly sunny, hot, low RH. A few degrees cooler by Monday but still near 100. Highs from 85-104. Minimum humidity: 14-24%. Winds west-northwest 5-10 mph with gusts to 18 mph.

FIRE BEHAVIOR FORECAST

FORECAST NUMBER: 17	TYPE OF FIRE: Wildfire
FIRE NAME: McKinney	OPERATIONAL PERIOD: 8/17-18/2022 (0700-0700)
DATE ISSUED: 8/16/2022	TIME ISSUED: 2000
UNIT: CA-KNF	SIGNED: <i>Nic Elmquist</i> Typed/printed: Nic Elmquist (FBAN)

INPUTS

WEATHER SUMMARY: ** See Fire Weather Forecast**

A **Red Flag Warning** is in effect today from 1200-2300 for the potential of thunderstorms and dry lighting. The IMETs will be monitoring the situation closely and will broadcast updated information over the Command Channel as necessary.

FUELS SUMMARY:

Several years of persistent drought and a water year which has received less than 50% of normal rainfall, has the fire footprint within an area identified as "Extreme Drought". These drought conditions had both the live and dead ground fuels at critically dry levels when the fire ignited on July 29th. The dry fuel conditions and strong erratic winds from nearby thunderstorms, caused extreme fire behavior on the McKinney fire with a high resistance to control during the first several operational periods. Fire conditions improved when a precipitation event occurred on August 2nd, mostly impacting the eastern portion of the fire. Resources have done a great job controlling the fire, but critical fuel and weather conditions will persist as we remain in what is historically the peak of fire season for northern California.

OUTPUTS

FIRE BEHAVIOR

GENERAL:

Most of the heat signatures being identified are along the western portion of the fire. The hot, dry, and breezy conditions will cause near 100% probability of ignitions during the peak burn period today. Assess the available fuel around the smokes that pop-up throughout the day to determine the threat to control lines and what actions are needed.

Fire Danger Indices – 2022 IRPG Page 39

Energy Release Component (Oak Knoll): 97th+

August Average ERC Percentile: 70th

Peak Burn Period (1400-1800) - Probability of Ignition (PIG): 90% (shaded), 100% (unshaded)

SPECIFIC:

Branch I: There continues to be minimal signs of heat along the eastern flank of the fire.

Branch X: Isolated portions of scattered heat remain in the Mill Creek area within Div. A. This portion did not experience rain during the storm event several weeks ago and has more available fuel that didn't burn. Keep lookouts posted into any areas of concern as today will be the warmest, driest, and windiest of the week.

Branch XX: The fuel loads along the north side of the fire were lighter due to the 2014 Beaver fire and post fire thinning treatments. Minimal signs of fire activity have been noted for several days, and this trend is expected to continue.

Initial Attack: The potential for new ignitions will be high today. Expect rapid rates of spread with the potential for extreme fire behavior if impacted by gusty, erratic outflow winds. Local knowledge is critical to navigate the network of roads to make access to new fires. Lean on the local resources for information, including best travel routes.

AIR OPERATIONS:

Sunrise 0621, Last Light 2036 (Daylength: losing 2 min, 30 sec)

Light smoke from the fires to the west will continue to linger within the lower elevations. There will be thunderstorms in the area which could impact air operations periodically throughout the operational period.

SAFETY

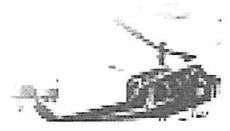
There is a potential for thunderstorms the next two days. Review thunderstorm safety with your crews (IRPG pg. 17).

Incident: McKinney	Date: 8/17-18/2022	Shift: 0700-0700
------------------------------	------------------------------	----------------------------



SAFETY MESSAGE

SAFETY IS OUR FIRST PRIORITY



Fire fighter safety comes first on every fire, every time

HAZARDS AND RISKS		
<ul style="list-style-type: none"> • Rattle Snakes • Steep Slopes • Dehydration • Heavy Equipment 	<ul style="list-style-type: none"> • Lightning • Local Wildlife • Driving • Crew Fatigue 	<ul style="list-style-type: none"> • Bucket Drops • Situational Awareness • Communications • COVID

SAFETY THOUGHT

Incident attitude needs to be positive so that it does not impair our ability to think clearly and act decisively.

RATTLESNAKES: Avoiding Snakebites. Some bites, such as those inflicted when snakes are accidentally stepped on or encountered in the wild, are nearly impossible to prevent. But experts say a few precautions can lower the risk of being bitten:

- Leave snakes alone. Many people are bitten because they try to kill a snake or get a closer look at it.
- If you can see it or hear it, leave it alone!
- Keep hands and feet out of areas you can't see. Don't pick up rocks or sticks unless you are out of a snake's striking distance. (A snake can strike half it's length.)
- Be cautious and alert when climbing rocks.

DEHYDRATION

Heat Stress occurs when the body's core temperature rises beyond safe limits. Evaporation of sweat is the body's main line of defense against heat. As sweat evaporates, it cools the body. When water lost by sweating is not replaced, the body's heat controls break down and body temperature climbs.

- To prevent dehydration:
- Drink 8 – 16 oz. of water before work.
 - Take frequent drinks each hour of work (1 qt.).
 - Drink as much as possible at lunch and the evening meal.
 - Continue replacing fluids throughout the evening.
 - **Limit caffeine drinks (ESPECIALLY ENERGY DRINKS).**

THINK-----SAFETY-----FIRST

Recognize Potential Hazards Ahead of Time!

The cornerstone of safety is to take time to assess the job and its environment. In order to encourage this principle, please consider using the "STOP" acronym to act as a reminder to pursue all jobs in a safe manner.



**Step Back
Think
Organize
Proceed**

INCIDENT RISK ANALYSIS (ICS 215a)

DIV	HAZARDOUS ACTIONS / CONDITIONS	MITIGATIONS / WARNINGS / REMEDIES
ALL	FIRE WEATHER/FIRE BEHAVIOR	<ul style="list-style-type: none"> • 100-HOUR FUELS BELOW 4% ERC'S 97th PERCENTILE • High Temperatures and low RH in the forecast. • Monitor current weather conditions and forecasts. • Maintain adequate escape routes and safety zones. Advise all personnel if these are compromised or changed. Set trigger points when appropriate.
ALL	DRIVING HAZARDS	<ul style="list-style-type: none"> • WATCH FOR ROCKS AND WILDLIFE ON HWY 96. Especially from dawn to dusk. DO NOT SKIP AHEAD OF PILOT CAR. • Drive defensively! Expect the unexpected around every curve. • Drive with headlights on; use chock blocks, keep windshields clean; look before backing; and use backers whenever available.
ALL	STRUCTURE / URBAN INTERMIX HAZARDS	<ul style="list-style-type: none"> • Survey burned out structures carefully. Avoid inhaling residue smoke and fumes. • Watch for downed powerlines and exposed propane lines. • Look for propane tanks and other hazardous materials
ALL	EXTREMELY STEEP TERRAIN AND ROLLING MATERIAL	<ul style="list-style-type: none"> • Concentrate on your footing placement; take your time. • Ensure adequate spacing between crewmembers so they can react to dislodged debris. • Post lookouts to warn of rolling debris. SHOUT out to warn others. • Look Up, Down and Around frequently.
ALL	HAZARD TREES	<ul style="list-style-type: none"> • Follow Hazard Tree Safety Guidelines (IRPG p. 22). • Be especially alert around snags during wind events or changing wind direction. • Check for hazard trees & "widow-makers" in sleeping areas.
ALL	SAFETY ZONES	<ul style="list-style-type: none"> • Follow safety zone guidelines (IRPG p. 6) • Carefully evaluate burned areas before designation as safety zones due to spotty burning in numerous areas. • When safety zones are distant from work site, set trigger points to allowing personnel to reach them in a timely manner.
ALL	NIGHT OPERATIONS	<ul style="list-style-type: none"> • Have a purpose for where you drive, what you do, don't rush into assignments • Use caution where you park/stage especially in steep timbered areas. • Increase SA by trying to see the work areas during daylight hours
ALL	INFECTIOUS DISEASE	<ul style="list-style-type: none"> • Maintain 6' foot distance whenever possible. Wear masks when appropriate. • Do frequent handwashing/sanitizing and disinfecting common surfaces. • Notify MEDL if any symptoms arise.
ALL	HEAVY EQUIPMENT/DOZERS	<ul style="list-style-type: none"> • Utilize appropriate PPE and other equipment safety mechanisms. • Maintain safe working distances. • Utilize observer or spotter. Avoid moving parts • Ensure the use of effective communication (radio, hand signals). • Identify hazards.
ALL	SUPPRESSION REPAIR	<ul style="list-style-type: none"> • Scout out your work area and identify hazards prior to working. • Watch for steep terrain and rolling materials that may be kicked loose by others working in the area. • Avoid working in proximity to heavy equipment. • Monitor personnel for heat related illness; stay hydrated and take frequent rest breaks.
ALL	LIGHT FLASHY FUELS/ SPOT FIRES	<ul style="list-style-type: none"> • Live fuel moistures are at critical level. • Expect rapid ROS when winds are present • Ensure LCES is in place. • Use caution when unburned fuels are between you and the fire.
ALL	HEAT RELATED ILLNESS (HRI) / DEHYDRATION&FATIGUE	<ul style="list-style-type: none"> • Drink 2: 1 water to sports drinks. • Maintain 2:1 work/rest ratio • Take frequent breaks, minimum of 10 minutes every hour. • Recognize symptoms of HEAT RELATED ILLNESS (IRPG P.110)
INCIDENT NAME: MCKINNEY ICS 215a		DATE PREPARED:8/16/2022 TIME PREPARED:1600 hrs.
Prepared by: Paul Tompkins		

ASSIGNMENT LIST (ICS 204 WF)

CONTROLLED UNCLASSIFIED
INFORMATION//BASIC

1. Incident Name: <p style="text-align: center;">McKinney</p>	2. Operational Period: Date From: 08/17/22 Date To: 08/18/22 Time From: 0700 Time To: 0700	3. Branch Division <p style="text-align: center;">X A</p> <p style="text-align: center;">Page 1 of 1 Alpha</p>
--	---	---

4. Operations Personnel:	
Operations Section Chief: John Owings, Kent Cunningham, Jason Flores(t)	Night Ops:
Branch Director: Greg Overacker, Rob DeCamp(t)	Branch Safety: Troy Maguire, Matthew Hutchinson
Division/Group Supervisor: Ryan Waggoner, John Kinder(t)	Air Attack: Derek Wheeler

5. Resources Assigned:		** Resources Below in Bold are 12 Hour **				
Resource Identifier	LWD	Leader	Personnel	Request #	Hours	Reporting Location
*HC1 EL DORADO IHC	8/17	Ben Strahan	22	C-60	0700-1900	Klamath River Spike
*HC2IA GROVELAND 4	8/17	Tim Markin	20	C-95	0700-1900	Klamath River Spike
HC2 NORTH PACIFIC	8/20	William Blackcrow	16	C-78	0700-1900	Klamath River Spike
ENG3 ROCKY POINT 223	8/20	Dusty Krebsbach	3	E-303	0700-1900	Klamath River Spike
ENG3 J3 CONTRACTING	8/27	Meshel Rad	3	E-390	0700-1900	Klamath River Spike
ENG6 NM-CAF 621	8/21	Rebecca Elmore	4	E-291	0700-1900	Klamath River Spike
*ENG6 WASATCH BRUSH 53	8/24	Robert Denning	2	E-386	0700-1900	Klamath River Spike
WTS2 EASLEY	8/17	Grant Grassman	2	E-193	0700-0700	Klamath River Spike
TFLD KEIPER	8/20	Steve Keiper	1	O-261	0700-1900	Klamath River Spike
TFLD(t) SANISYA	8/20	Ernest Sanisya	1	O-378	0700-1900	Klamath River Spike
EMPF OZBIRN	8/24	Shane Ozbirn	1	O-523	0700-1900	Klamath River Spike
EMPF(t) SMITH	8/24	Michael Smith	1	O-517	0700-1900	Klamath River Spike
AMBU ADVENTURE MEDICS 1	8/22	Sadie Douville	2	E-138	0700-1900	Klamath River Spike

6. Work Assignments:

- Actively patrol line between Bald Mountain and DP-29.
- Mop-up along fire edge to the extent that escape is improbable.

7. Special Instructions:

- Report to Klamath River Spike or Montague Base Camp for sleeping as directed by DIVS.
- READs will check in and out with DIVS.
- Identify and backhaul excess accountable equipment.
- * Denotes resource available for initial attack.

**** Emergency response logistics AMBO 6 available from Klamath River Spike****

- Be aware of possible thunder and lightning storms in the area. Monitor radio for weather updates. If heavy rain is imminent, move to pavement and high ground.

8. Communications

Name	Ch	Function	Rx Freq	Rx Tone	Tx Freq	Tx Tone	Notes
NIFC C12	2	COMMAND	173.0375	T5-146.2	167.3250	T5-146.2	Tom Martin Pk
NIFC T6	8	TACTICAL	166.7750	T5-146.2	166.7750	T5-146.2	Night Div A/D
A/G TAC	14	A/G TAC	167.0625	none	167.0625	none	
CALCORD	15	MEDICAL	156.0750	T6-156.7	156.0750	T6-156.7	Air Ambulance
AIRGUARD	16	AIRGUARD	168.6250	none	168.6250	T1-110.9	<Emergency Use Only>

9. Prepared by: Name:	RESL	RESL	Signature:
ICS 204	Date/Time: 8/16/2022	2200	Personnel Count: 78

ASSIGNMENT LIST (ICS 204 WF)

CONTROLLED UNCLASSIFIED
INFORMATION//BASIC

1. Incident Name:		2. Operational Period:				3. Branch		Division	
McKinney		Date From: 08/17/22	Date To: 08/18/22			X		D	
		Time From: 0700	Time To: 0700			Page 1 of 2		Delta	
4. Operations Personnel:									
Operations Section Chief: John Owings, Kent Cunningham, Jason Flores(t)					Night Ops:				
Branch Director: Greg Overacker, Rob DeCamp(t)					Branch Safety: Troy Maguire, Matthew Hutchinson				
Division/Group Supervisor: Paul Naman					Air Attack: Derek Wheeler				
5. Resources Assigned:									
** Resources Below in Bold are 12 Hour **									
Resource Identifier	LWD	Leader	Personnel	Request #	Hours	Reporting Location			
HC2 JD FORESTRY 1	8/19	Hector Gonzales	20	C-75	0700-1900	Klamath River Spike			
*STC CNF 6632C	8/18	Timothy Kraling	20	E-248	0700-1900	Klamath River Spike			
ENG3 PVT J3 CONTRACTING	8/21	Eric Nahee	3	E-306	0700-1900	Klamath River Spike			
ENG3 NV-WID #2311	8/28	Kyle Osborne	3	E-389	0700-1900	Klamath River Spike			
ENG J3 CONTRACTING 182	8/21	Anthony Tensalia	3	E-182	0700-1900	Klamath River Spike			
*ENG6 GCP 811	8/20	Justin Doyle	3	E-288	0700-1900	Klamath River Spike			
ENG6 ROCK CREEK	8/20	Tyler Muegerl	3	E-290	0700-1900	Klamath River Spike			
ENG6 BRUSH 192	8/20	Lance Wollabaek	3	E-304	0700-1900	Klamath River Spike			
*ENG6 PARA-CORP 703	8/22	Reid Troxel	3	E-387	0700-1900	Klamath River Spike			
*DOZ2 PVT GRANITE	8/18	Grant Bemis	3	E-232	0700-1900	Klamath River Spike			
WTS2 PVT HANNA	8/17	Grant Hanna	2	E-192	0700-1900	Klamath River Spike			
WTS2 JOHNSON 276	8/19	Robert Johnson	1	E-276	0700-1900	Klamath River Spike			
MAST PVT KIT E-282	8/19	Zachariah Haymore	2	E-282	0700-1900	Klamath River Spike			
FMOD NORTH ZONE O-446	8/22	George Peterson	2	O-446	0700-1900	Klamath River Spike			
FMOD PACIFIC RIDGELINE O-447	8/21	Sergio Suto	2	O-447	0700-1900	Klamath River Spike			
FMOD QUINNS HOMELAND	8/21	Allen Ingersoll	2	O-448	0700-1900	Klamath River Spike			
FMOD LONE PINE	8/20	Randy Bell	2	O-449	0700-1900	Klamath River Spike			
STEN HUSKINS	8/22	Alan Huskins	1	O-472	0700-1900	Klamath River Spike			
6. Work Assignments:									
- Actively patrol and secure lines between Bald Mountain and Klamath River.									
- Mop-up along fire edge to the extent that escape is improbable.									
7. Special Instructions:									
- Report to Klamath River Spike or Montague Base Camp for sleeping as directed by DIVS.									
- READs will check in and out with DIVS.									
- Identify and backhaul excess accountable equipment.									
- * Denotes resource available for initial attack.									
** Emergency response logistics AMBO 6 available from Klamath River Spike**									
- Be aware of possible thunder and lightning storms in the area. Monitor radio for weather updates. If heavy rain is imminent, move to pavement and high ground.									
8. Communications									
Name	Ch	Function	Rx Freq	Rx Tone	Tx Freq	Tx Tone	Notes		
NIFC C12	2	COMMAND	173.0375	T5-146.2	167.3250	T5-146.2	Tom Martin Pk		
NIFC T7	9	TACTICAL	168.2500	T5-146.2	168.2500	T5-146.2			
A/G TAC	14	A/G TAC	167.0625	none	167.0625	none			
CALCORD	15	MEDICAL	156.0750	T6-156.7	156.0750	T6-156.7	Air Ambulance		
AIRGUARD	16	AIRGUARD	168.6250	none	168.6250	T1-110.9	<Emergency Use Only>		
9. Prepared by: Name:									
RESL			RESL						
Signature:									
ICS 204		Date/Time: 8/16/2022 2200						Personnel Count: 78	

ASSIGNMENT LIST (ICS 204 WF)

CONTROLLED UNCLASSIFIED
INFORMATION//BASIC

1. Incident Name: <p style="text-align: center; font-size: 1.2em;">McKinney</p>	2. Operational Period: Date From: 08/17/22 Date To: 08/18/22 Time From: 0700 Time To: 0700	3. Branch Division <p style="text-align: center; font-size: 1.5em;">XX Q/R/T</p>
---	---	--

Page 1 of 1

4. Operations Personnel:		
Operations Section Chief: John Owings, Kent Cunningham, Jason Flores(t)	Night Ops:	
Branch Director: Rob Szczepanek	Branch Safety: James Gregory, Jason Foshee(t)	
Division/Group Supervisor: Shawn Baker, Steve Kovacs	Air Attack: Derek Wheeler	

5. Resources Assigned:	** Resources Below in Bold are 12 Hour **					
Resource Identifier	LWD	Leader	Personnel	Request #	Hours	Reporting Location
*STC LPF 1651C	8/25	Larry Alvarado	27	E-370	0700-1900	Montague Camp
ENG6 MOUNT ADAMS 622	8/22	Eric Randolph	3	E-388	0700-1900	Montague Camp
ENG6 AZASF 662	8/25	Andrew Zimmerman	6	E-372	0700-1900	Montague Camp
*WTS2 JOHNSON 104	8/28	Steve Boerman	1	E-104	0700-1900	Montague Camp
TFLD ULRICH	8/22	Justin Ulrich	1	O-457	0700-1900	Montague Camp
FMOD PVT UNDERDOG FALLING	8/20	Randy Collins	2	O-442	0700-1900	Montague Camp
EMPF MACALPINE	8/20	Luke Macalpine	1	O-408	0700-1900	Montague Camp
EMTF BAKER	8/26	Matt Baker	1	O-527	0700-1900	Montague Camp
EMPF KENYON	8/21	Jacob Kenyon	1	O-407	0700-1900	Montague Camp
EMTF PASCOLLA	8/27	Cory Pascolla	1	O-533	0700-1900	Montague Camp
REMS 3 *BRANCH RESOURCE*	8/19	Kat Dougherty	4	E-286	0700-0700	Montague Camp
AMBU MOUNTAIN MEDICS 4	8/26	Skylar Bainbridge	1	E-37	0700-0700	Montague Camp

6. Work Assignments:

- Actively patrol and secure lines between Round Mountain and DP-70.
- Mop-up along fire edge to the extent that escape is improbable.

7. Special Instructions:

- READs will check in and out with DIVS.
- * Denotes resource available for initial attack.
- Be aware of possible thunder and lightning storms in the area. Monitor radio for weather updates. If heavy rain is imminent, move to pavement and high ground.

** Emergency response logistics AMBO 6 available from Klamath River Spike**

8. Communications							
Name	Ch	Function	Rx Freq	Rx Tone	Tx Freq	Tx Tone	Notes
NIFC C5	1	COMMAND	169.7500	T5-146.2	167.1000	T5-146.2	Buckhorn Bally LO
VFIRE 23	11	TACTICAL	154.2950	T6-156.7	154.2950	T6-156.7	
A/G TAC	14	A/G TAC	167.0625	none	167.0625	none	
CALCORD	15	MEDICAL	156.0750	T6-156.7	156.0750	T6-156.7	Air Ambulance
AIRGUARD	16	AIRGUARD	168.6250	none	168.6250	T1-110.9	<Emergency Use Only>

9. Prepared by: Name:	RESL	RESL	
		Signature:	
ICS 204	Date/Time: 8/16/2022	2200	Personnel Count: 49

ASSIGNMENT LIST (ICS 204 WF)

CONTROLLED UNCLASSIFIED
INFORMATION//BASIC

1. Incident Name: <p style="text-align: center; font-weight: bold;">McKinney</p>	2. Operational Period: Date From: 08/17/22 Date To: 08/18/22 Time From: 0700 Time To: 0700	3. Branch Division <p style="text-align: center; font-size: 2em; font-weight: bold;">XX</p> <p style="text-align: center; font-weight: bold;">REPAIR GROUP</p>
--	---	---

Page 1 of 2

4. Operations Personnel:	
Operations Section Chief: John Owings, Kent Cunningham, Jason Flores(t)	Night Ops:
Branch Director: Rob Szczepanek	Branch Safety: James Gregory, Jason Foshee(t)
Division/Group Supervisor: Brandon Hughes	Air Attack: Derek Wheeler

5. Resources Assigned:	** Resources Below in Bold are 12 Hour **					
Resource Identifier	LWD	Leader	Personnel	Request #	Hours	Reporting Location
HC2 PVT OREGON WOODS 3	8/19	Trenton Bruegger	20	C-80	0700-1900	Klamath River Spike
DOZ3 JUNGWIRTH	8/21	Jerry Jungwirth	2	E-182	0700-1900	Klamath River Spike
MAST PETERS E-234	8/19	Jason Helms	2	E-234	0700-1900	Montague Camp
EXC2 PACIFIC RIDGELINE	8/20	Bob White	2	E-280	0700-1900	Montague Camp
EXC2 LONESTAR	8/20	Jonathon Coltrin	2	E-281	0700-1900	Klamath River Spike
EXC2 DOWNEY TRUCKING	8/24	Trevor Downey	2	E-360	0700-1900	Montague Camp
CHP3 PVT HANSEN E-342	8/22	Joshua Hansen	1	E-342	0700-1900	Montague Camp
CHP3 PVT HANSEN E-343	8/22	Melkay Cisneros	1	E-343	0700-1900	Montague Camp
GRD2 PVT JOHNSON	8/24	Mike LaMarr	2	E-362	0700-1900	Klamath River Spike
WTS2 TOBIASSON	8/28	Justin Rhodes	1	E-21	0700-1900	Montague Camp
WTS2 HANNA	8/18	Ken Kelly	2	E-191	0700-1900	Klamath River Spike
WTS2 DARRAH LOGGING	8/22	Carl Walker	1	E-337	0700-1900	Klamath River Spike
FMOD PACIFIC RIDGELINE	8/20	Aaron Adams	2	O-443	0700-1900	Montague Camp
FMOD BUCK MASON	8/22	Jeremy Mason	2	O-444	0700-1900	Montague Camp
FMOD MOEN	8/20	Darwin Saxon	2	O-450	0700-1900	Montague Camp
TFLD GONZALEZ	8/18	Steve Gonzalez	1	O-458	0700-1900	Klamath River Spike
TFLD (t) SCHEU	8/18	Michael Scheu	1	O-465	0700-1900	Montague Camp
HEQB STEENHOVEN	8/19	Casey Steenhoven	1	O-283	0700-1900	Klamath River Spike

6. Work Assignments:

- Continue suppression repair on indirect lines and direct lines where appropriate.
- Coordinate suppression repair with Div D in the McKinney Creek Road area.
- Continue to gather and update repair data points for progress tracking.

7. Special Instructions:

- READs will check in and out with DIVS.
- * Denotes resource available for initial attack.
- Be aware of possible thunder and lightning storms in the area. Monitor radio for weather updates. If heavy rain is imminent, move to pavement and high ground.

***** UTILIZE THE DESIGNATED COMMAND CHANNEL FOR THE GEOGRAPHICAL DIVISION YOU ARE WORKING IN *****

8. Communications							
Name	Ch	Function	Rx Freq	Rx Tone	Tx Freq	Tx Tone	Notes
VFIRE 24	12	TACTICAL	154.2725	T6-156.7	154.2725	T6-156.7	
A/G TAC	14	A/G TAC	167.0625	none	167.0625	none	
CALCORD	15	MEDICAL	156.0750	T6-156.7	156.0750	T6-156.7	Air Ambulance
AIRGUARD	16	AIRGUARD	168.6250	none	168.6250	T1-110.9	<Emergency Use Only>

9. Prepared by: Name: RESL RESL Signature:

ICS 204 Date/Time: 8/16/2022 2200 Personnel Count: 47

ASSIGNMENT LIST (ICS 204 WF)

CONTROLLED UNCLASSIFIED
INFORMATION//BASIC

1. Incident Name: <p style="text-align: center; font-size: 1.2em;">McKinney</p>	2. Operational Period: Date From: 08/17/22 Date To: 08/18/22 Time From: 0700 Time To: 0700	3. Branch Division <p style="text-align: center; font-size: 1.2em;">XX</p> <p style="text-align: center; font-size: 1.2em;">REPAIR GROUP</p>
--	---	---

Page 2 of 2

4. Operations Personnel:	
Operations Section Chief: John Owings, Kent Cunningham, Jason Flores(t)	Night Ops:
Branch Director: Rob Szczepanek	Branch Safety: James Gregory, Jason Foshee(t)
Division/Group Supervisor: Brandon Hughes	Air Attack: Derek Wheeler

5. Resources Assigned:		** Resources Below in Bold are 12 Hour **				
Resource Identifier	LWD	Leader	Personnel	Request #	Hours	Reporting Location
HEQB VETROCK	8/26	Vetrock, Shad A	1	O-546	0700-0700	Montague Camp
HEQB(t) BOJORQUEZ	8/17	Frank Bojorquez	1	O-270	0700-1900	Klamath River Spike
REAF CODE	8/21	Bryson Code	1	O-330	0700-1900	Montague Camp
REAF COURTER		Joshua Courter	1	O-558	0700-1900	Montague Camp
REAF PINGREE	8/17	Melissa Pingree	1	O-331	0700-1900	Montague Camp
REAF MERRIFIELD	8/19	Jesse Merrifield	1	O-329	0700-1900	Montague Camp
REAF MORRIS	8/25	Ann Morris	1	O-430	0700-1900	Klamath River Spike
REAF SPAAK	8/21	Jordan Spaak	1	O-496	0700-1900	Klamath River Spike
REAF O'NEIL	8/22	Eric O'Neil	1	O-431	0700-1900	Montague Camp
REAF LASCHECK	8/18	Lyndsey Lascheck	1	O-429	0700-1900	Klamath River Spike
REAF OLIN	8/23	Grant Olin	1	O-538	0700-1900	Klamath River Spike
ARCH DICKS	8/24	Merrill Dicks	1	O-561	0700-1900	Montague Camp
ARCH GUISTO	8/26	Bret Guisto	1	O-425	0700-1900	Montague Camp
ARCH BONSKOWSKI	8/24	Alicia Bonskowski	1	O-506	0700-1900	Klamath River Spike
ARCH KISSINGER	8/24	Krystal Kissinger	1	O-421	0700-1900	Klamath River Spike
READ (T) PERNAS	8/30	Antonio Pernas	1	O-581	0700-1900	Montague Camp

6. Work Assignments:

- Continue suppression repair on indirect lines and direct lines where appropriate.
- Coordinate suppression repair with Div D in the McKinney Creek Road area.
- Continue to gather and update repair data points for progress tracking.

7. Special Instructions:

- READs will check in and out with DIVS.
- * Denotes resource available for initial attack.
- Be aware of possible thunder and lightning storms in the area. Monitor radio for weather updates. If heavy rain is imminent, move to pavement and high ground.

***** UTILIZE THE DESIGNATED COMMAND CHANNEL FOR THE GEOGRAPHICAL DIVISION YOU ARE WORKING IN *****

8. Communications							
Name	Ch	Function	Rx Freq	Rx Tone	Tx Freq	Tx Tone	Notes
VFIRE 24	12	TACTICAL	154.2725	T6-156.7	154.2725	T6-156.7	
A/G TAC	14	A/G TAC	167.0625	none	167.0625	none	
CALCORD	15	MEDICAL	156.0750	T6-156.7	156.0750	T6-156.7	Air Ambulance
AIRGUARD	16	AIRGUARD	168.6250	none	168.6250	T1-110.9	<Emergency Use Only>

9. Prepared by: Name: RESL RESL

Signature:

ICS 204 Date/Time: 8/16/2022 2200 Personnel Count: 16

ASSIGNMENT LIST (ICS 204 WF)

CONTROLLED UNCLASSIFIED
INFORMATION//BASIC

1. Incident Name: <p style="text-align: center; font-weight: bold;">McKinney</p>	2. Operational Period: Date From: 08/17/22 Date To: 08/18/22 Time From: 0700 Time To: 0700	3. Branch Division <p style="text-align: center; font-weight: bold;">Supp. Repair Supp Repair 2</p>
--	---	---

4. Operations Personnel:		Page 1 of 1
Operations Section Chief: John Owings, Kent Cunningham, Jason Flores(t)	Night Ops:	
Branch Director: Jon Jones (12)	Branch Safety:	
Division/Group Supervisor: Damon Denman (12)	Air Attack: Derek Wheeler	

5. Resources Assigned:		** Resources Below in Bold are 12 Hour **				
Resource Identifier	LWD	Leader	Personnel	Request #	Hours	Reporting Location
DOZ2 PVT E-20021 JOHNSON		Johnson, Mark	2	E-20021	0700-1900	Yreka Fairgrounds
DOZ2 PVT E-20031 SW MAINT.		Walton, Justin	2	E-20031	0700-1900	Yreka Fairgrounds
DOZ2 PVT E-20033 ERICKSON		Medeives, Tyler	2	E-20033	0700-1900	Yreka Fairgrounds
DOZ2 PVT E-20035 ERICKSON		Howard, Triston	2	E-20035	0700-1900	Yreka Fairgrounds
DOZ PVT E-20246 NORTH RIVER			2	E-20246	0700-1900	Yreka Fairgrounds
WT PVT E-20145 CONVERSE		Schepps, Steve	2	E-20145	0700-1900	Yreka Fairgrounds
EXC2 PVT E-20286 NORTH RIVER			1	E-20286	0700-1900	Yreka Fairgrounds
EXC2 PVT E-20315 WD				E-20315	0700-1900	Yreka Fairgrounds
EXC2 PVT E-20317 PETERS				E-20317	0700-1900	Yreka Fairgrounds
EXC2 PVT E-20321 PETERS				E-20321	0700-1900	Yreka Fairgrounds
THSP Joling		Joling, Austin Z		O-20280	0700-1900	Yreka Fairgrounds
THSP Yarusso		Yarusso, Andrew	1	O-20283	0700-1900	Yreka Fairgrounds

6. Work Assignments:

- Identify and document Suppression Repair needs.
- Implement Suppression Repair Plan to mitigate impacts from fire suppression on property and the environment in the Yreka area.

7. Special Instructions:

- Continually monitor weather conditions and suspend operations that may result in a new start if conditions persist.
- ** Emergency response logistics AMBO 6 available from Klamath River Spike**
- Be aware of possible thunder and lightning storms in the area. Monitor radio for weather updates. If heavy rain is imminent, move to pavement and high ground.

8. Communications

Name	Ch	Function	Rx Freq	Rx Tone	Tx Freq	Tx Tone	Notes
NIFC C5	1	COMMAND	169.7500	T5-146.2	167.1000	T5-146.2	Buckhorn Bally LO
VFIRE 22	10	TACTICAL	154.2650	T6-156.7	154.2650	T6-156.7	
A/G TAC	14	A/G TAC	167.0625	none	167.0625	none	
CALCORD	15	MEDICAL	156.0750	T6-156.7	156.0750	T6-156.7	Air Ambulance
AIRGUARD	16	AIRGUARD	168.6250	none	168.6250	T1-110.9	<Emergency Use Only>

9. Prepared by: Name: RESL RESL Signature:

ICS 204 Date/Time: 8/16/2022 2200 Personnel Count: 14

ASSIGNMENT LIST (ICS 204 WF)

CONTROLLED UNCLASSIFIED
INFORMATION//BASIC

1. Incident Name: <p style="text-align: center; font-size: 1.2em;">McKinney</p>	2. Operational Period: Date From: 08/17/22 Date To: 08/18/22 Time From: 0700 Time To: 0700	3. Branch Division <p style="text-align: center; font-size: 1.2em;">Supp. Repair Supp Repair 3</p>
---	---	--

4. Operations Personnel:

Operations Section Chief: John Owings, Kent Cunningham, Jason Flores(t)	Night Ops:
Branch Director: Jon Jones (12)	Branch Safety:
Division/Group Supervisor: Jeremy Ravenscroft (12)	Air Attack: Derek Wheeler

5. Resources Assigned: **** Resources Below in Bold are 12 Hour ****

Resource Identifier	LWD	Leader	Personnel	Request #	Hours	Reporting Location
CRW2 PVT C-20076 GB 3			20	C-20076	0700-1900	Yreka Fairgrounds
DOZ2 PVT E-20017 CLT		Wisener, Brian	1	E-20017	0700-1900	Yreka Fairgrounds
DOZ PVT E-20076 PETERS			2	E-20076	0700-1900	Yreka Fairgrounds
WT PVT E-20107 WILLMORE			2	E-20107	0700-1900	Yreka Fairgrounds
WT PVT E-20141 COLEMAN			2	E-20141	0700-1900	Yreka Fairgrounds
EXC2 PVT E-20290 BAR G		Ross, James	1	E-20290	0700-1900	Yreka Fairgrounds
EXC2 PVT E-20321 PETERS				E-20321	0700-1900	Yreka Fairgrounds
FELB PVT E-20127 CLT LOGGING		Hopkins	1	E-20127	0700-1900	Yreka Fairgrounds
FELB PVT E-20202 JOHNSON			1	E-20202	0700-1900	Yreka Fairgrounds
CRW2 PVT C-20075 GB 16		Coleman, Arie	20	C-20075	0700-1900	Yreka Fairgrounds
WT PVT E-20106 WILLMORE		Torres, Bill	2	E-20106	0700-1900	Yreka Fairgrounds
WT PVT E-20140 MENDO		Resse, Carson	2	E-20140	0700-1900	Yreka Fairgrounds

6. Work Assignments:

- Identify and document Suppression Repair needs.
- Implement Suppression Repair Plan to mitigate impacts from fire suppression on property and the environment in the Yreka area.

7. Special Instructions:

- Continually monitor weather conditions and suspend operations that may result in a new start if conditions persist.

**** Emergency response logistics AMBO 6 available from Klamath River Spike****

- Be aware of possible thunder and lightning storms in the area. Monitor radio for weather updates. If heavy rain is imminent, move to pavement and high ground.

8. Communications

Name	Ch	Function	Rx Freq	Rx Tone	Tx Freq	Tx Tone	Notes
NIFC C5	1	COMMAND	169.7500	T5-146.2	167.1000	T5-146.2	Buckhorn Bally LO
VFIRE 22	10	TACTICAL	154.2650	T6-156.7	154.2650	T6-156.7	Use tac of DIV you are working in
A/G TAC	14	A/G TAC	167.0625	none	167.0625	none	
CALCORD	15	MEDICAL	156.0750	T6-156.7	156.0750	T6-156.7	Air Ambulance
AIRGUARD	16	AIRGUARD	168.6250	none	168.6250	T1-110.9	<Emergency Use Only>

9. Prepared by: Name: RESL RESL Signature:

ICS 204 Date/Time: 8/16/2022 2200 Personnel Count: 54


ICS 205 - INCIDENT RADIO COMMUNICATIONS PLAN

1. Incident Name: McKinney Cal Fire IA GROUP		2. Date/Time Prepared Date: 08/16/2022 Time: 1930		3. Operational Period: Date To: 08/18/22 Time To: 0700	
---	--	--	--	---	--

4. Communications								
Ch#	Function	Name	Assigned To	Rx Freq	Rx Tone	Tx Freq	Tx Tone	Notes
1	COMMAND	CDF SKU T1	SKU L T1	151.3250	T6-156.7	159.3600	T1-110.9	FOREST SUMMIT
2	COMMAND	CDF SKU T2	SKU L T2	151.3250	T6-156.7	159.3600	T2-123.0	SHASTA VALLEY
3	COMMAND	NIFC C5	AVAILABLE	169.7500	T5-146.2	167.1000	T5-146.2	
4	COMMAND	NIFC C50	AVAILABLE	170.3125	T5-146.2	163.8250	T5-146.2	
5	COMMAND	NIFC C53	AVAILABLE	173.0250	T5-146.2	165.3625	T5-146.2	
6	I/A TAC	CDF T7	AVAILABLE	151.3400	T16-192.8	151.3400	T16-192.8	
7	I/A TAC	CDF T8	AVAILABLE	151.3700	T16-192.8	151.3700	T16-192.8	
8	TACTICAL	CDF T9	AVAILABLE	151.3850	T16-192.8	151.3850	T16-192.8	
9	TACTICAL	CDF T10	AVAILABLE	151.4000	T16-192.8	151.4000	T16-192.8	
10	TACTICAL	CDF T11	AVAILABLE	151.4450	T16-192.8	151.4450	T16-192.8	
11	TACTICAL	NIFC T2	AVAILABLE	168.2000	none	168.2000	none	
12	TACTICAL	CDF A/G 1	CDF A/G1	151.2200	192.8	151.2200	192.8	
13	A/G COMMAND	A/G CMD	MCK A/G CMD	166.9375	none	166.9375	none	
14	A/G TAC	A/G TAC	MCK A/G TAC	167.0625	none	167.0625	none	
15	MEDICAL	CALCORD	CALCORD	156.0750	T6-156.7	156.0750	T6-156.7	Ambulance
16	AIRGUARD	AIRGUARD	EMERGENCY	168.6250	none	168.6250	T1-110.9	EMERGENCY
17								
18								
19								
20	AIRGUARD	AIRGUARD	EMERGENCY	168.6250	none	168.6250	T1-110.9	EMERGENCY

5. Special Instructions CURRENT CLONE: CDFIA807

McKinney Communications 916-798-5791

6. Prepared by (Communications Unit Leader): Name: Chris Perry		Signature: 
ICS 205 - CONTROLLED UNCLASSIFIED INFORMATION/BASIC		Date/Time: 08/16/22 1930

ICS 205 - INCIDENT RADIO COMMUNICATIONS PLAN

1. Incident Name: McKinney IA GROUP		2. Date/Time Prepared Date: 08/16/2022 Time: 1930		3. Operational Period: Date To: 08/18/22 Time To: 0700	
--	--	--	--	---	--

4. Communications								
Ch#	Function	Name	Assigned To	Rx Freq	Rx Tone	Tx Freq	Tx Tone	Notes
1	COMMAND	KNF ONG2	I/A Yeti	172.2750	none	164.7000	T2-123.0	Lake Mtn (KNF - Happy Camp)
2	COMMAND	KNFONG11	I/A Yeti	172.2750	none	164.7000	T11-114.8	Slater Butte (KNF - Happy Camp)
3	COMMAND	KNF BLK1	I/A McKinney	169.6375	none	168.7750	T1-110.9	Mase Mtn (KNF - Oak Knoll)
4	COMMAND	KNF BLK2	I/A McKinney	169.6375	none	168.7750	T2-123.0	Lake Mtn (KNF - Oak Knoll)
5	COMMAND	KNFBLK10	I/A McKinney	169.6375	none	168.7750	T10-107.2	Collins Baldy (KNF - Oak Knoll)
6	TACTICAL	NIFC T2	I/A Tac Primary	168.2000	none	168.2000	none	
7	TACTICAL	R5 T5	I/A Tac Secondary	167.1125	none	167.1125	none	
8	COMMAND	KNF RPT2	KNF Dispatch	171.5250	none	165.4125	T2-123.0	Lake Mtn. (KNF)
9	COMMAND	KNFRPT11	KNF Dispatch	171.5250	none	165.4125	T11-114.8	Slater Butte (KNF)
10	IA/A/G	R5 A/G 43	A/G Primary	167.6000		167.6000		KNF I/A - Air to Ground
11	A/G CMD	MCK AG CMD	A/G Command	166.9375	none	166.9375	none	McKinney A/G Command
12	A/G TAC	MCK AG TAC	A/G Tactical	167.0625	none	167.0625	none	McKinney A/G Tactical
13	A/G CMD	YET AG CMD	A/G Command	168.4000	none	168.4000	none	Yeti A/G Command
14	A/G TAC	YET AG TAC	A/G Tactical	169.2000	none	169.2000	none	Yeti A/G Tactical
15	MEDICAL	CALCORD	Medical	156.0750	T6-156.7	156.0750	T6-156.7	Air Ambulance
16	AIRGUARD	AIRGUARD	EMERGENCY	168.6250	none	168.6250	T1-110.9	FOR EMERGENCY ONLY
17								
18								
19								
20	AIRGUARD	AIRGUARD	EMERGENCY	168.6250	none	168.6250	T1-110.9	FOR EMERGENCY ONLY

5. Special Instructions CURRENT CLONE: I/A 0806
McKinney Communications 916-798-5791


6. Prepared by (Communications Unit Leader): Name: Chris Perry
Signature: 
Date/Time: 08/16/22 1930
NIMS IAP

ICS 205 - INCIDENT RADIO COMMUNICATIONS PLAN

1. Incident Name: McKinney
Incident Channels
4. Communications

1. Incident Name:		2. Date/Time Prepared		3. Operational Period:				
McKinney		Date:	08/16/2022	Date From:	08/17/22	Date To:	08/18/22	
Incident Channels		Time:	1930	Time From:	0700	Time To:	0700	
Ch#	Function	Name	Assigned To	Rx Freq	Rx Tone	Tx Freq	Tx Tone	Notes
1	COMMAND	NIFC C5	Div Q/R/T	169.7500	T5-146.2	167.1000	T5-146.2	Buckhorn Bally LO
2	COMMAND	NIFC C12	DIV A,D,Z	173.0375	T5-146.2	167.3250	T5-146.2	Tom Martin Pk
3	COMMAND	NIFC C50	DIV V, YREKA	170.3125	T5-146.2	163.8250	T5-146.2	Butcher Hill
4	COMMAND	NIFC C52	DIV P	171.0875	T5-146.2	164.6000	T5-146.2	Bald Mtn
5	COMMAND	NIFC C53	DIV W/X,Y	173.0250	T5-146.2	165.3625	T5-146.2	Gun Sight Pk
6	TACTICAL	NIFC T3	DIV Y/Z	168.6000	T5-146.2	168.6000	T5-146.2	
7	TACTICAL	NIFC T5	DIV V/W/X	166.7250	T5-146.2	166.7250	T5-146.2	
8	TACTICAL	NIFC T6	Div A	166.7750	T5-146.2	166.7750	T5-146.2	Night Div A/D
9	TACTICAL	NIFC T7	DIV D	168.2500	T5-146.2	168.2500	T5-146.2	
10	TACTICAL	VFIRE 22	Div P, FRS 1,2,3	154.2650	T6-156.7	154.2650	T6-156.7	Night Div P/Q/R/T
11	TACTICAL	VFIRE 23	Div Q/R/T	154.2950	T6-156.7	154.2950	T6-156.7	
12	TACTICAL	VFIRE 24	Repair Gp2	154.2725	T6-156.7	154.2725	T6-156.7	
13	A/G COMMAND	A/G CMD	A/G Command	166.9375	none	166.9375	none	
14	A/G TAC	A/G TAC	A/G Tactical	167.0625	none	167.0625	none	
15	MEDICAL	CALCORD	CALCORD	156.0750	T6-156.7	156.0750	T6-156.7	Air Ambulance
16	AIRGUARD	AIRGUARD	AIRGUARD	168.6250	none	168.6250	T1-110.9	<Emergency Use Only>
17								
18								
19								
20	AIRGUARD	AIRGUARD	AIRGUARD	168.6250	none	168.6250	T1-110.9	<Emergency Use Only>

5. Special Instructions
McKinney Communications 916-798-5791
CURRENT CLONE: MCK0806

6. Prepared by (Communications Unit Leader): Name: Chris Perry
 Signature: 
 Date/Time: 08/16/22 1930
 NIMS IAP

AIR OPERATIONS SUMMARY 220 Prepared By: JoAnn Overacker Prepared: 08/16/2022 Prepared Time: 1800

1. MCKINNEY **2. OPERATIONAL PERIOD** 08/17/2022 **START TIME:** 0700 **END TIME:** 2100 **SUNRISE:** 0620 **SUNSET:** 2010

3. REMARKS (Safety Notes, Hazards, Air Operations Special Equipment, etc.).

Ensure all aircraft have the IA Frequency Command SKU Local 151.3250 RX, 159.3600 TX tone 1 (110.9) and tone 2(123.0)

A/G CMD Calfire 151.220 tone guarded – tone 16 (192.8)

Cut off time for ordering aircraft is 1940, with pumpkin time at 2038 that will give them about 1 hr to complete the mission.

4. MEDICAL AIRCRAFT:
H-407 Hoist/ALS/NVG
Located at Ashland, OR. Airport
Available 24/7
Order through fire Communications

5. TFR:
Notam # 2/9664
Polygon
Altitude: 9,500
Frequency: 118.7250

6. PERSONNEL	NAME	PHONE #	7. FREQUENCIES	AM	FM	8. FIXED-WING Avail/ Type/ Make-Model/ N#/ Base
AOBD	JoAnn Overacker	209-559-1617	A/A Fixed Wing	166.6000		AIRTANKERS, SEATS, AIR ATTACK
ASGS	Brent Ohlweiler	949-633-1365	A/A Rotor Wing	127-0250		ATGS - 1BR LOCATED IN REDDING
ATGS	Derrick Wheeler	530-355-3274	A/G Command		166.9375	HLCO in 14HX located at Siskiyou Airport
HLCO	Jay Walters	623-696-8532	A/G Tactical		167.0625	ATGS 05 available at Siskiyou Airport for IA
HEBM	Gabe Herrera	530-559-7206	Deck		163.1000	
UAS	Steve Ramaekers	208-473-8708	CALCORD		156.0750 TONE 6	UAS working night shift only.
			TOLC	123.0250		Email all costs to mail to: Mckinneyhelibase2022@gmail.com
			Air Guard		168.6250 (110.9 TX)	Email shift tickets and time to 2022.mckinney.finance@firenet.gov

9. HELICOPTERS

FAA N#	TY	MAKE/ MODEL	BASE	START	AVAIL	REMARKS	FAA N#	TY	MAKE/ MODEL	BASE	START	AVAIL	REMARKS
763TW	1	UH60	Siskiyou	0700	0830	Bucket	H-506	2	Bell 205++	Siskiyou	0700	0830	Bucket
45917	1	S-61	Siskiyou	0700	0830	Tanked	N14HX	3	Bell 407	Siskiyou	0700	0800	Bucket
9CH	1	CH-47D	Siskiyou	0700	0830	Bucket	UAS 32	3	MD600	N/A	1800	0800	Working night shift

JoAnn Overacker

MCKINNEY KNF-6177

INTERAGENCY IA AGREEMENT

MCKINNEY IC	IMT12	JAMES ARAGON	928-486-0450
MCKINNEY AOB	IMT12	JOANN OVERACKER	209-559-1617
KNF AVIATION CONTACT	KNF AVIATION OFFICER	TYLER DETRICK	530-925-9668
CAL FIRE IA CONTACT	SKU CONTACT	DARRYL LAWS	530-598-2601
SKU ECC	YICC DISPATCH	ON DUTY CAPTAIN	530-842-7066
KNF ECC	YICC DISPATCH	ON DUTY CAPTAIN	530-841-4300

- New starts within the McKinney TFR boundaries will be reported to the Yreka Interagency Command Center. YICC will determine jurisdiction and appropriate response.
- YICC will coordinate with AOB and McKinney Air Attack for aviation response to new starts within the TFR regardless of agency. Aviation Frequencies will remain on McKinney frequencies for Air Tactics and TFR victor.
- If jurisdiction of the new start is determined to be under Siskiyou Unit Protection or within the Mutual Threat Zone (5 miles) the Air to Ground, Command and Ground Tactical frequency will be assigned as local IA frequencies. All other aviation frequencies will remain on TFR/ McKinney team frequencies.
 - o AIR TACTICS – 166.6000
 - o VICTOR- TFR: 118.7250, ROTOR: 127.0250
 - o AIR TO GROUND CMD – CDF A/G 1 – 151.2200 (T16 TX AND RX)
 - o COMMAND– SKU LOCAL: RX-151.3250 TX-159.3600
 - o GROUND TACTICAL – CDF TAC (MULTIPLE)
- If jurisdiction of the new fire start is on the Klamath National Forest– Federal Protection Area (MTZ is the exception) the team will take action and all radio frequencies will remain the same.
 - o AIR TACTICS – 166.6000
 - o VICTOR- TFR: 118.7250, ROTOR: 127.0250
 - o AIR TO GROUND CMD – 166.9375
 - o AIR TO GROUND TAC –167.0625

COVID-19 PREVENTION INFORMATION

MAINTAINING A HEALTHY WORKFORCE

from the COVID Advisor Team

All fire personnel are susceptible to contracting COVID-19. The health and well-being of all personnel must be a priority throughout the fire season. Mask use, social distancing, and good hygiene will support the health of fire personnel and are important ways to prevent the spread of COVID-19 and maintain the health of all fire personnel.

Self-Awareness/ Daily Health Screening

Separate yourself from others and notify your supervisor if you experience COVID-19 related symptoms (fever or chills, cough – more than expected, shortness of breath or difficulty breathing, fatigue, muscle or body aches, headache, new loss of taste or smell, sore throat, congestion or runny nose, nausea or vomiting, diarrhea). Supervisors will use COVID precautions and facilitate COVID testing at the identified COVID testing locations.

COVID-19 Testing availability

COVID-19 Testing is available at the **Montague Elementary School location** (430 E. Prather St.) from **Adventure Medics, hours -0600-2000**. Priorities for testing will be for those with COVID-related symptoms and potential exposures to COVID-positive individuals but testing is also available to anyone with COVID exposure concerns.

Federal employees enrolled in the **Screening Testing Program** can also access the identified testing location to meet their testing requirements. **Screening Testing is required weekly for federal employees when the Community Levels are Medium or High.**

Sanitary and Personal Hygiene Practices

Rigorous sanitary practices are important for reducing the transmission of infectious diseases. All personnel should cover their coughs and sneezes. Perform proper hand hygiene including handwashing or hand sanitizer use after touching potentially contaminated surfaces, removing face coverings, after using the restroom, and before eating or putting anything in their mouth.

Social Distancing and Mask Wearing

Individuals should practice and remind others of social distancing of at least six feet apart. When social distancing is not possible, masks use is recommended. **Modules should limit close contact with other resources to insulate their module from potential exposures.**

COVID-19 COMMUNITY LEVEL	MASKING DIRECTION (Federal Wildfire Incidents and within Federal Facilities)
HIGH	Individuals are required to wear masks around others while indoors, while sharing a vehicle, or when social distancing cannot be maintained.
MEDIUM and LOW	Individuals are not required to wear masks.

Community Levels are updated weekly by CDC and give direction for a Sun-Sat operation period.

McKinney Incident COVID Advisor – **Robin Wall, (530) 410-1721**

Prepared by **Bill Sanders, Lead COVID Advisor (530) 721-3865**

Fire and COVID-19 Briefing Checklist

Self-Awareness / Screening

- Notify supervisor if you or others experience:
 - Cough, more than expected
 - Difficulty breathing
 - Loss of taste or smell
 - Fever
 - Chills
 - Sore throat
 - Muscle pain
- Immediately separate yourself from others.
- Follow crew and division plans to isolate, triage, and transport symptomatic personnel.

Hygiene on the Fireline

- Properly wash or sanitize your hands often
- Avoid handshakes and communal use items
- Inform supervisor of needed resupply.
- Disinfect high touch surfaces often

Social distancing and protective equipment

- Practice social distancing
- Conduct briefings in conversations outdoors and at least SIX feet apart
- Utilize face coverings
- Clean or replace dirty face coverings, equipment, and PPE

Communications

- Ensure effective sender/receiver messaging.
- Protect yourself, your crew, and your camp!

Any questions contact:

MEDL Gena Fowlkes @ (909) 762-9032

MEDL Nick Stepanian @ (909) 908-4778

The Five-D System for Effective Fireline Waterbars

To make effective waterbars, use the 5-D System: **D**istance, **D**iagonal, **D**ivert, **D**ischarge, and **D**issipate.

Distance: Waterbars must be placed the proper distance apart, based on slope. This keeps the area that accumulates runoff small enough to prevent damage. The table below gives the maximum distance between waterbars, or between a waterbar and the next upslope drainage break.

Diagonal: Don't bully the flow, lead it. Waterbars built directly across a fireline tend to fail. Waterbars built diagonal to the fireline lead the water off and work better. A simple rule is to build them at 30 degrees off perpendicular (see the illustration below).

Divert: A good waterbar will divert the water off the fireline. To do this the waterbar must be deep enough to handle all the flow for as long as it's needed. Excavation is much better than fill in making a durable and effective waterbar (a ditch or a dip beats a dike).

Discharge: Another feature of a good waterbar is that it will discharge the flow. A good waterbar is not a dam, it must have an open outlet.

Dissipate: Finally, a good waterbar should dissipate the flow just below the outlet to exhaust its eroding power and cause it to filter into the soil. This may require placing slash, rock, or debris below the outlet.

Fireline slope %	Maximum Distance Apart (feet)	<i>Recommended spacing for waterbars on firelines. Waterbars should be no further apart than this, but they may be closer. When in doubt, put in more. From: USDA-Forest Service, "Site Administrator's Handbook"</i>
1-6.....	300	
7-9.....	200	
10-14.....	150	
15-20.....	90	
21-40.....	50	
41-60.....	25	

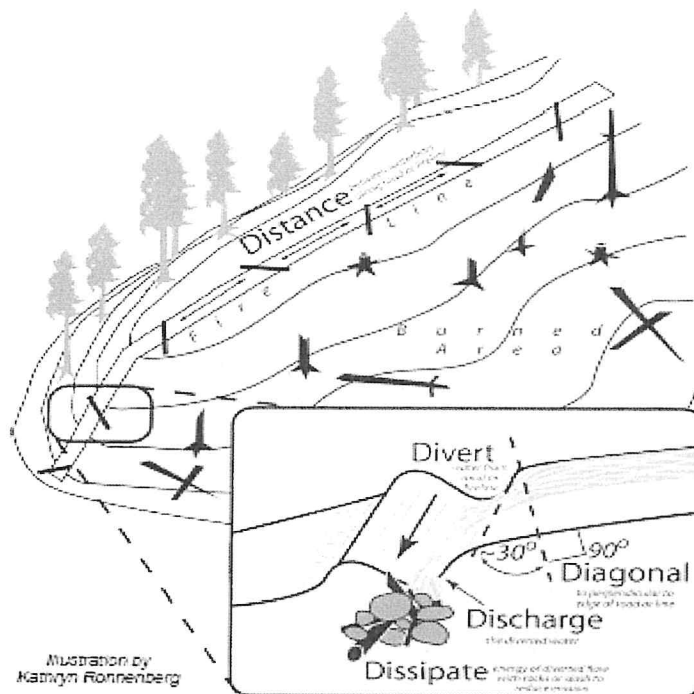


Illustration by
Kamryn Ronnenberg

Reference: Hauge, C.J., M.J. Furniss and F.D. Euphrat. 1979. *Soil erosion in California's Coast Forest District.* California Geology, June, 1979

Specifications for Piling Slash

Hand Pile Construction:

- All activity generated and pre-existing fuels with a diameter between 1" and 8" shall be bucked to 4' or less and included in the hand piles. Exceptions include single logs that exhibit at least 50% decomposition.
- Hand piles shall be symmetrical, constructed neatly and **compactly**.
- Hand pile base shall **not** be constructed with material over 4", 4"< material will be stacked in the upper half of the pile.
- Slash that causes large air spaces in piles shall be cut to a minimum of 8"x 8" air spaces greater than 8"x8" are unacceptable.
- Material in piles shall be cut <4' per individual piece.
- Maximum piles size 6' in diameter and 6' in height and minimum pile size shall be 4' in diameter and 4' in height.
- Piles shall be distinct and separate from each other allowing at least 6' between each pile
- Piles shall be placed to limit scorch potential to leave trees, not in contact with leave trees and built up slope from leave trees when possible
- At least 50% of material in the lower third of the piles shall be composed of small diameter material and attached fines to create a kindling core.
- All piles shall be covered with Kraft type wax paper (wax side up).
- Pile covering sheet shall be placed to cover the bottom 2/3 of the pile and cover 50% of the surface area of the pile at this level. The remaining 1/3 of the pile shall be placed over the cover sheeting anchoring all four corners and the middle of the cover sheeting securely.
- No piles shall be built on, or in contact with any tree stumps >10" diameter.
- Piles created on downed logs, the log in contact with any pile shall be bucked to create a 4' separation in the log (to break the continuity and limit fire spread if the log should be ignited).
- logs over 8" diameter generated from thinning shall be limbed with limb wood added to piles, cut to 4' lengths and dispersed a minimum of 6' separation from downed logs, leave trees and stumps.
- In some units specific pile placement will be required to avoid damage to sensitive plant colonies, maps with exclusion areas will be included, the exclusion areas will be clearly marked and defined by the COR before work takes place. Any piles constructed in exclusion areas will be moved by the contractor.

FINANCE MESSAGE

Fire Name: McKinney
Fire Number: CA-KNF-006177
Accounting Code: P5 PX2F (0505)
Email: 2022.mckinney.finance@firenet.gov

Finance Documents Needed upon “Check In” (If Not Already Submitted):

Please email these documents or scan the QR Code below, attach & submit.			
FED Equipment/ Crews: <ul style="list-style-type: none"> Manifest - showing employment type (GS or WG) or AD rates if applicable 	Overhead: <ul style="list-style-type: none"> AD/Casual Hire Form If regular Agency please ensure “GS” or “WG” is written on your first CTR 	Contract Equipment/ Contract Crews: <ul style="list-style-type: none"> Agreement Manifest Resource Order Inspections 	Cooperator: <ul style="list-style-type: none"> Cooperative Agreement Resource Order

When emailing finance:

- Overhead/FED: *subject line:* TIME, Resource #, Resource Name
- Equipment/Cooperator: *subject line:* EQTR, Resource #, Resource Name

Prior to your demob date, please contact Finance *via email* to expedite the demob process.
Upon submittal of your final CTR/Shift Tickets, Finance will email you copies of your pay documents for review and signature.





Local Government Resources on CFAA

If you are demobing and there is no OES AREP there:

- Have the FSC or IC review and sign your 42s
 - You give the incident the pink copy
 - You keep the gold copy
- You mail the white and green (if it has a green) to OES Headquarters per the instructions on the 42

**OES JOB AIDS, FORMS, F-42 SAMPLES AND
CFAA AGREEMENT**



**Your OES Fire & Rescue Assistant Chief
Patrick Titus
916-634-9225**

Training Specialist Message

The Incident Training Specialist from Team 2 will be staying on to assist the incoming team. If you are departing the McKinney Fire, please complete your training record by following the instructions below.

If you are staying, its business as usual.

At the end of your assignment:

1. **Trainee:** Complete the exit interview form. Use the exit interview QR code to access the document.

This is the link to the exit interview form -



2. **Trainer:** Fill in the Position Task Book as completely as possible for this incident.

3. **Trainer:** Complete the ICS 225 performance evaluation and discuss with your Trainee. Make sure it's signed by both the Trainer and Trainee. Take a picture/copy of the ICS 225 and send it to imt2training@gmail.com

The Training Specialist will send the training documents to the email address you provided. For training related questions, call/text Dominic Panno (TNSP) at 530-913-8251 or email- imt2training@gmail.com



Human Resource Message

Employee Advocate

Everyone here today is playing a critical role in fighting the McKinney Fire. We all have our assignments that must be met to achieve our mission of protecting life, resources, and property. Of course, we cannot accomplish our mission when one of our fellow team members may be experiencing a work and/or personal matter that is impacting their ability to keep focused and remain positive.

If we witness a team member who is having a rough go at it, become their advocate. Ask them how things are going and see if they want to take a break to talk about what's going on. Give them the opportunity to vent and to share with you their concern. You may be the person that brings them back to where we need them to be to help meet our objectives.

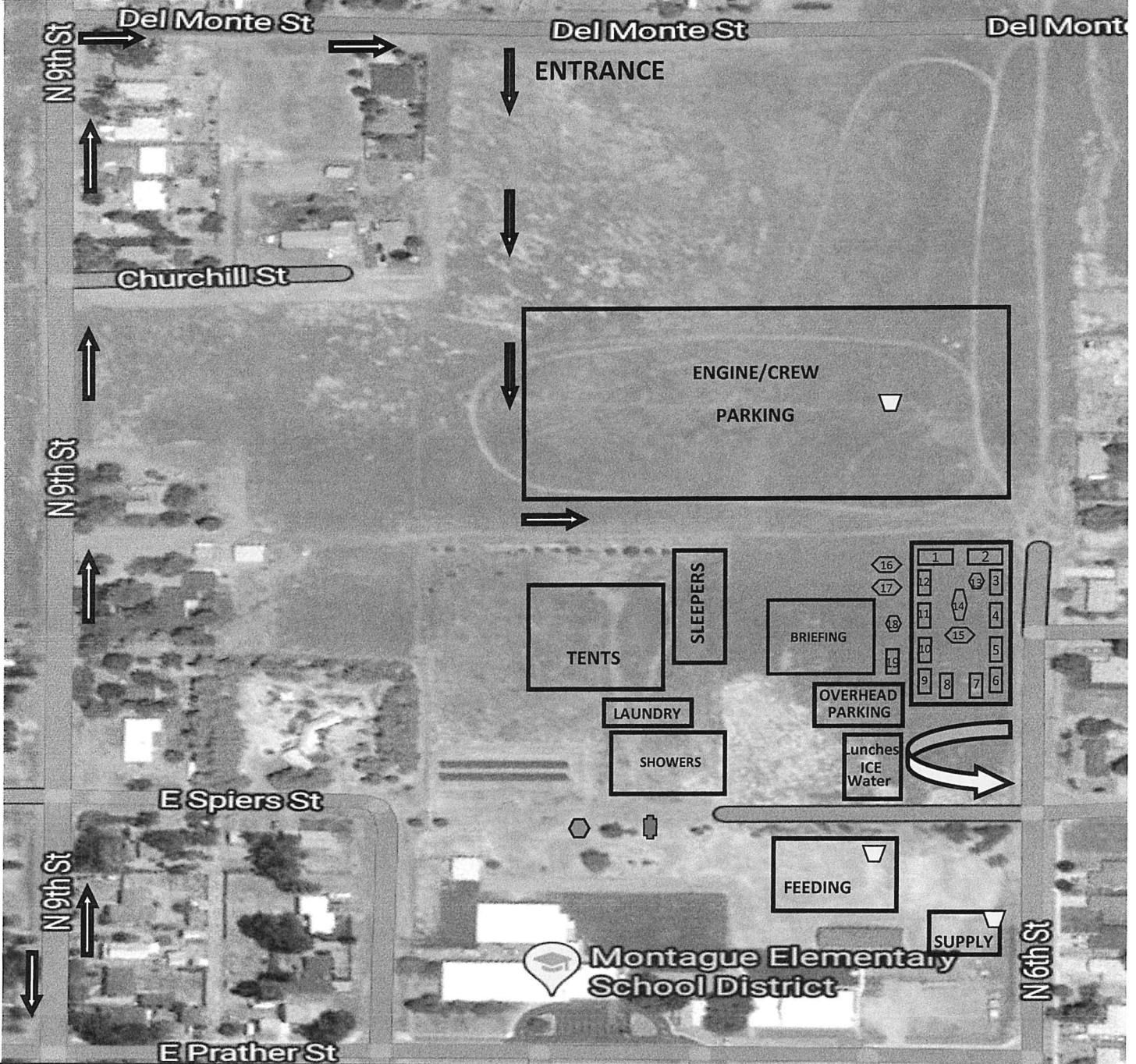
If your friendly HRSP can be of any assistance, please let him know!






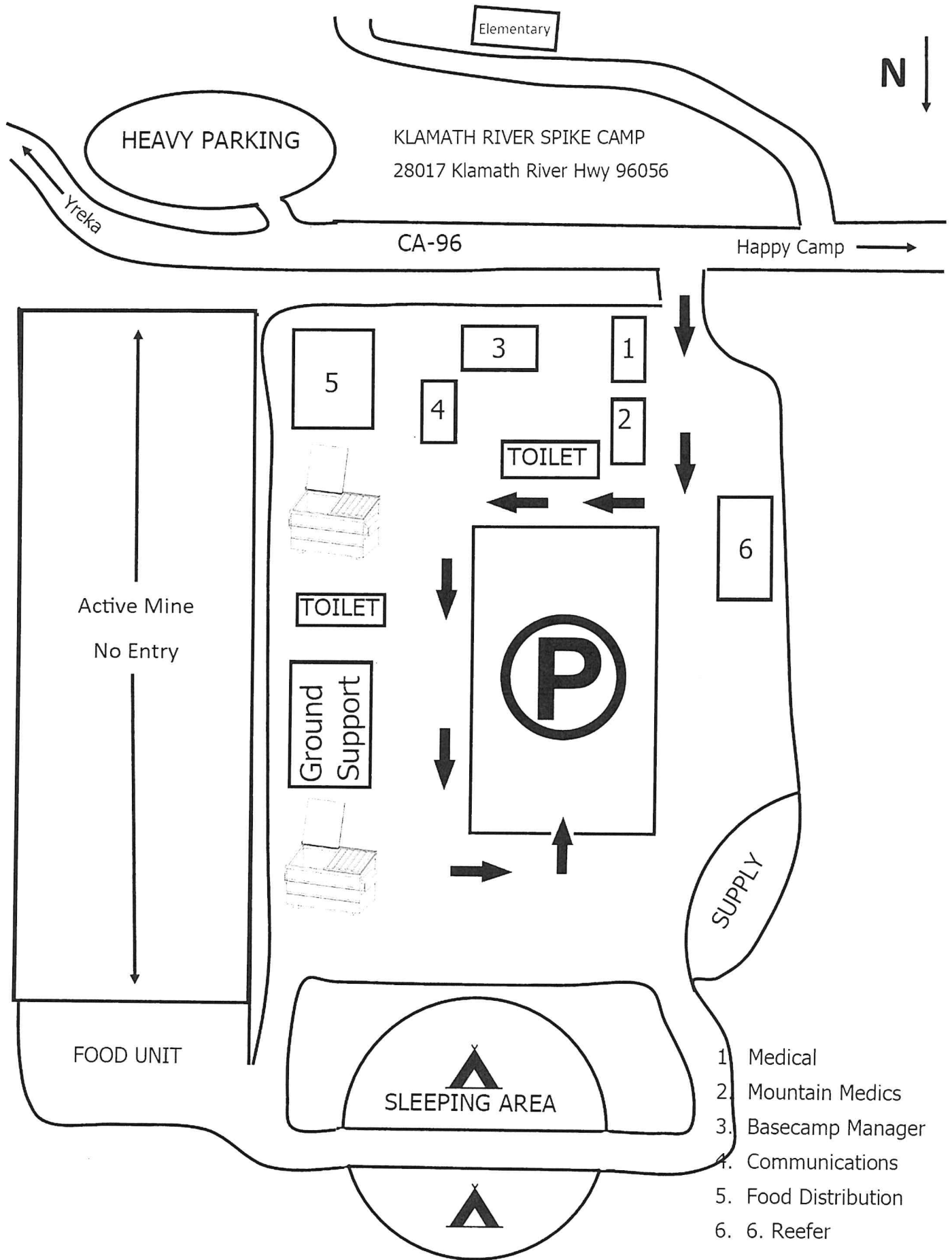
Adrian Escobedo – HRSP: 530-523-3804

Mckinney ICP

430 E Prather St, Montague, CA 96064

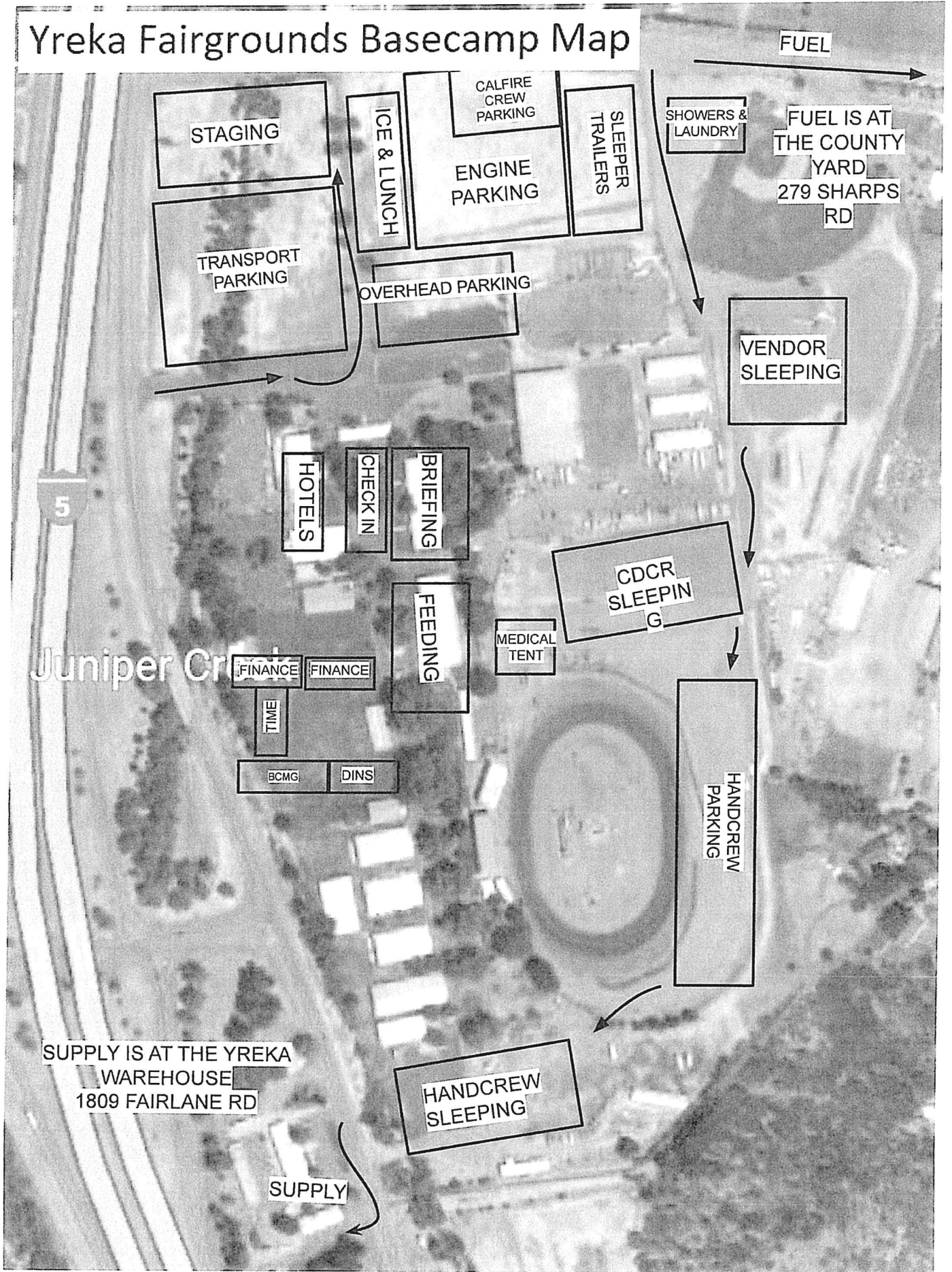


- | | |
|------------------------------|---|
| 1. Operations/Safety/Air OPS | 12. DEMOB/Check-in/Resources |
| 2. IC/Liaison | 13. Overflow |
| 3. ITSS | 14. Planning Meetings |
| 4. Planning/Situation | 15. READS |
| 5. Medical | 16. Overflow |
| 6. PIO | 17. Human Resources |
| 7. GIS | 18. COMMS |
| 8. Copy Trailer | 19. COMMS |
| 9. Facilities |  Cloning/Comms DEMOB |
| 10. Cost/Claims/FSC |  Medical |
| 11. Finance |  Dumpster |



- 1. Medical
- 2. Mountain Medics
- 3. Basecamp Manager
- 4. Communications
- 5. Food Distribution
- 6. 6. Reefer

Yreka Fairgrounds Basecamp Map





MCKINNEY FIRE
US-CA-KNF-006177
DMOB LIST
08/17/2022

PLEASE BE ON TIME & NO EARLY CHECK-IN FOR DEMOB

THANK YOU

NAME	ORDER #	TIME
CRW1 TEXAS CYN IHC	C-57	0730
CRW2 TABLE ROCK	C-59	0730
CRW1 GOLDEN EAGLE	C-94	0750
ENG4 ROC-N-R	E-198	0800
ENG3 SUNDANCE	E-199	0800
ENG5 BULLHIDE	E-250	0815
ENG3 COLORADO RIVER	E-251	0815
ENG6 LEHI FD	E-252	0830
ENG3 NATIONAL WILDLAND	E-253	0830
ENG3 AZ BR-45	E-255	0845
ENG5 EAST FORK	E-258	0845
EMTF JONSON	O-482	0800
SOFR TUCKER	O-105/513	0810
EMTF WHITE	O-108	0820
SOFR CIRONE	O-135	0830
PIO2 McQUILLAN	O-209	0840
DIV FERNANDEZ	O-254	0850
PIO2 LONG	O-254	0900

MCKINNLEY DEMOB PHONE # 916-798-5238

TENTATIVE DEMOB LIST FOR AUGUST 17, 2022
20000 BLOCK RESOURCES

E-20004	STC TGU 9251C	0800
E-20003	STC LMU 9222C	0830

Report to the Yreka Fairgrounds DEMOB Trailer at your scheduled time.





20000 Block and ALL State Resources

Briefing, Feeding, Finance, Check-In, Demob, etc. are located at:

YREKA FAIRGROUNDS
1712 Fairlane Rd, Yreka

DEMOB MESSAGE

Check the DEMOB list each morning. Only report to DEMOB at your scheduled time. Early admittance will not be allowed, this includes “starting the walk.”

- Vehicle Inspection: The DEMOB Unit will inform you if the vehicle needs to be inspected. A Vehicle Inspection time will be provided when you initially arrive to the Demobilization Unit.

FINANCE MESSAGE

TIME UNIT (Personnel and Hired Equipment)

- CAL FIRE PERSONNEL- Make sure you have started your eFC-33’s and update after each shift. Please make sure ePay schedules are up to date.
- HIRED EQUIPMENT SUPPLIERS- Check in with the Time Unit and drop off your agreements.
- SHIFT TICKETS- Available for agency line supervisors only and are in the Time Unit.
 - Reminder – VIN numbers must match contracts exactly.

COMP / CLAIMS

- DAMAGE CLAIMS- For all damages during fire suppression activities to property or vehicle, complete an ICS-213. We will need location, description of damages, and your contact information.
- WORKERS COMPENSATION- Supervisors should complete IIPP-15’s and come to the COMP/CLAIMS Unit to enter into IAPS.

DIVISION / GROUP - LINE SUPERVISORS

Please turn in hired equipment shift tickets at the end of each shift.

FIRE SUPPRESSION REPAIR MESSAGE

Berms and push-piles should be spread to the extent feasible by back-blading with a tractor or with an excavator. Debris piled against standing timber should be pulled back while taking care not to damage growing stock with the tractor blade or an excavator bucket and thumb. At helispots, staging areas, and safety zones remove and/or breach berms so that runoff can be dissipated. Cross-drain these areas to effectively dissipate water as necessary.

Waterbreaks should be constructed at an approximately 45° angle at a minimum depth of 10” from the bottom of the cut to the top of the berm. Where possible, the discharge from the waterbreaks should be directed into vegetated areas to minimize erosive forces. Where dozerline or handline has crossed a watercourse, the channel should be cleared of soil and debris to re-establish the channel. Waterbreaks on handlines should be installed every 50’ or closer as needed.

Waterbreak maximum spacing:	<u>Grade</u>	0-10%	11-25%	26-50%	>50%
	Spacing	0-200’	150’	100’	75’

Roads used in fire suppression activities should be left in at least as good a condition as they were found. Gravel and soil surface roads should be watered to prevent excessive dust formation. Where suppression activities have damaged or rendered road drainage facilities non-functional, waterbreaks or drivable drainage dips should be installed for drainage. Inside ditches damaged from suppression activities should be cleaned and left unobstructed.

If any archaeological resources are located during suppression repair activities, work will stop in that location and the Suppression Repair Lead will be notified.

FIRELINE ORDER FORM

& Time order was placed:	Order # (DIVS + #)	Location & Time for delivery (DIV, LZ, DP, Lat Long)	Mode of Delivery
Point of Contact:		Lat:	Driver <input type="checkbox"/>
		Long:	DIVS to pick up <input type="checkbox"/>
			HELO <input type="checkbox"/>
Notes:	Elevation:		
	Length of Longline required:		

Order received in Communications by (Name):	Time:
Order shipped to line by (Name):	(Send this sheet to the line with the order) Time:

Item	Amount
Hoselay Kit 1000' : 10- 1½" Hose, 10- 1" Hose, 10- 1½" Gated wyes, 10-1½" x 1" reducers, 10-1" nozzles	
Mop up Kit : 20 - ¾" Hose, 10- 1½"x1" Reducers, 10- 1" x ¾" Reducers, 10- ¾" shutoffs, 10- ¾" wyes, 10- ¾" nozzles	

Item	Amount	#	Item	Amount
Hose (100') 1½"		33	Drip Torch	
Hose (100') 1"		34	Fusees, Boxes	
Hose (50') ¾"		35	FIREQUICK Hotshot Flares (12/Box)	
Nozzle, 1½"		36	FIREQUICK Stubby Flares (12/Box)	
Nozzle, 1"		37	FIREQUICK Chubby Flares (75/Box)	
Nozzle, garden ¾"		38	FIREQUICK Big Shot Flares (50/Box)	
Wye, Gated 1½"		39	Cartridge #6 purple (Box)	
Wye, Gated 1"		40	Batteries AAA, case	
Wye, Gated ¾"		41	Batteries AA, case	
Reducer, 1½ x 1"		42	Flagging, specify color:	
Reducer, 1" x ¾"		43	Water, 5 gallon Cubies	
Inline tee , 1½" x 1"		44	Water, Bottled Cases	
Foam 5 gallon container		45	Gatorade, Cases	
Backpack Pump		46	MRE's (12/Box)	
Pumpkin 1500/3000/6000 gallon		47	Heavy Mill Plastic	
Folda-Tank 1000/1500 gallon		48	Staple Gun with 1/2" staples	
Mark 3 Pump		49	Wrap, Structure 54" x 300'	
Mark 3 Pump Kit		50	ANYTHING NOT LISTED ABOVE :	
Pump, Lightweight		51		
Pump, Volume		52		
Sprinkler Kit (6 per kit)		53		
		54		
		55		
		56	COVID Kit	
Chainsaw Kit		57	Bath in a bag each	
Bar Oil - gallons		58	Hygiene Kit	
2 Cycle oil (Pints)		59	Trash Bags, Box	
Gas Unleaded (Gallons)		60	Paper Towels each	
Diesel (Gallons)		61	Disenfectant bottle	
5 gallon fuel can (Empty)		62	Nitrile Gloves, specify size: L <input type="checkbox"/> XL <input type="checkbox"/> # Boxes	

FIRELINE ORDER FORM

Date & Time order was placed:		Order # (DIVS + #)	Location & Time for delivery (DIV, LZ, DP, Lat Long)		Mode of Delivery
Point of Contact:			Lat:	Driver <input type="checkbox"/>	
			Long:	DIVS to pick up <input type="checkbox"/>	
Notes:		Elevation:		HELO <input type="checkbox"/>	
		Length of Longline required:			
Order received in Communications by (Name):					Time:
Order shipped to line by (Name): (Send this sheet to the line with the order)					Time:
#	Item				Amount
1	Hoselay Kit 1000': 10- 1½" Hose, 10- 1" Hose, 10- 1½" Gated wyes, 10-1½" x 1" reducers, 10-1" nozzles				
2	Mop up Kit: 20 - ¾" Hose, 10- 1½"x1" Reducers, 10- 1" x ¾" Reducers, 10- ¾" shutoffs, 10- ¾" wyes, 10- ¾" nozzles				
#	Item	Amount	#	Item	Amount
3	Hose (100') 1½"		33	Drip Torch	
4	Hose (100') 1"		34	Fusees, Boxes	
5	Hose (50') ¾"		35	FIREQUICK Hotshot Flares (12/Box)	
6	Nozzle, 1½"		36	FIREQUICK Stubby Flares (12/Box)	
7	Nozzle, 1"		37	FIREQUICK Chubby Flares (75/Box)	
8	Nozzle, garden ¾"		38	FIREQUICK Big Shot Flares (50/Box)	
9	Wye, Gated 1½"		39	Cartridge #6 purple (Box)	
10	Wye, Gated 1"		40	Batteries AAA, case	
11	Wye, Gated ¾"		41	Batteries AA, case	
12	Reducer, 1½ x 1"		42	Flagging, specify color:	
13	Reducer, 1" x ¾"		43	Water, 5 gallon Cubies	
14	Inline tee , 1½" x 1"		44	Water, Bottled Cases	
15	Foam 5 gallon container		45	Gatorade, Cases	
16	Backpack Pump		46	MRE's (12/Box)	
17	Pumpkin 1500/3000/6000 gallon		47	Heavy Mill Plastic	
18	Folda-Tank 1000/1500 gallon		48	Staple Gun with 1/2" staples	
19	Mark 3 Pump		49	Wrap, Structure 54" x 300'	
20	Mark 3 Pump Kit		50	ANYTHING NOT LISTED ABOVE :	
21	Pump, Lightweight		51		
22	Pump, Volume		52		
23	Sprinkler Kit (6 per kit)		53		
24			54		
25			55		
26			56	COVID Kit	
27	Chainsaw Kit		57	Bath in a bag each	
28	Bar Oil - gallons		58	Hygiene Kit	
29	2 Cycle oil (Pints)		59	Trash Bags, Box	
30	Gas Unleaded (Gallons)		60	Paper Towels each	
31	Diesel (Gallons)		61	Disenfectant bottle	
32	5 gallon fuel can (Empty)		62	Nitrile Gloves, specify size: L <input type="checkbox"/> XL <input type="checkbox"/> # Boxes	

MEDICAL PLAN (ICS 206 WF) CIIMT 12

1. Incident Name				2. Operational Period				
McKINNEY INCIDENT				Date/Time: 08/17/2022 – 08/18/2022 (0700 - 0700)				
3. EMS / Ambulance Services/Aid Stations								
Name	Location			Frequency/Phone		Advanced Life Support (ALS) Yes No		
ADVENTURE MEDICS MMSU	MONTAGUE ICP			909-762-9032		X		
MOUNTAIN MEDICS	KLAMATH RIVER SPIKE CAMP			909-762-9032		X		
EMERGENCY RESP LOGS	KLAMATH RIVER SPIKE CAMP			909-762-9032		X		
4. Air Rescue / Air Ambulance Services								
Name	Phone			Type of Aircraft & Capability				
KERN COUNTY H407	McKINNEY COMMUNICATIONS			HELICOPTER, ALS, 24/7 – HOIST				
CHP H14	McKINNEY COMMUNICATIONS			HELICOPTER, ALS, 24/7 – HOIST				
MERCY AIR	McKINNEY COMMUNICATIONS			AIR AMBULANCE ALS, 24/7 – NO HOIST				
REACH	McKINNEY COMMUNICATIONS			AIR AMBULANCE ALS, 24/7 – NO HOIST				
PHI	McKINNEY COMMUNICATIONS			AIR AMBULANCE ALS, 24/7 – NO HOIST				
5. Hospitals (all times estimated from incident location)								
Name & Level	GPS Datum – WGS 84 Degrees Decimal Minutes		Travel Time Air Gnd		Phone	Helipad Yes No		Address
U.C. DAVIS MEDICAL CENTER (LVL 1)	Lat:	N. 38° 33.2963'	1.5 HRS	6 HRS	ER Direct Line: 916-734-2011	X		2315 Stockton Blvd Sacramento, CA 95817
	Long:	W. 121° 27.3918'						
ASANTE ROGUE VALLEY MEDICAL CENTER (LVL 2)	Lat:	N. 42° 19.0505'	20 MIN	2 HRS	ER Direct Line: 541-789-7116	X		2825 Barnett Rd. Medford, OR 97504
	Long:	W. 122° 49.8392						
MERCY MEDICAL CENTER (LVL 3)	Lat:	N. 41° 19.0943'	45 MIN	1.5 HRS	ER Direct Line: 530-926-9360	X		914 Pine St. Mt Shasta, CA 96067
	Lat:	W. 122° 19.2806'						
FAIRCHILD MEDICAL CENTER (LVL 4)	Lat:	N. 41° 43.167'	15 MIN	60 MIN	ER Direct Line: 530-841-6292	X		444 Bruce St. Yreka, CA 96097
	Long:	W. 122° 38.7483						
6. Division / Crew Emergency Pre-Plan								<i>Update and discuss with assigned resources daily.</i>
Fireline EMT / Medic's Division / Branch Location								
Air Hoist site location site: Lat: / Long: / Elevation:								
Helispot: Lat: / Long: / Elevation:								
7. Prepared By (Medical Unit Leader)			8. Date/Time		9. Reviewed By (Safety Officer)		10. Date/Time	
MEDL BRANDON BENNEWATE 805-813-3858			08/16/2022 1600		SOF2 PAUL TOMPKINS 619-889-7533		08/16/2022 1600	
<i>Brandon Bennewate</i>					<i>Paul Tompkins</i>			

MEDICAL PLAN (ICS 206 WF) CIIMT 12

Medical Incident Report																													
<p>FOR A NON-EMERGENCY INCIDENT, WORK THROUGH CHAIN OF COMMAND TO REPORT AND TRANSPORT INJURED PERSONNEL AS NECESSARY.</p> <p>FOR A MEDICAL EMERGENCY: IDENTIFY ON SCENE INCIDENT COMMANDER BY NAME AND POSITION AND ANNOUNCE "MEDICAL EMERGENCY" TO INITIATE RESPONSE FROM IMT COMMUNICATIONS/DISPATCH.</p>																													
<p>Use the following items to communicate situation to communications/dispatch.</p>																													
<p>1. CONTACT COMMUNICATIONS / DISPATCH (Verify correct frequency prior to starting report) <i>Ex: "Communications, Div. Alpha. Stand-by for Emergency Traffic."</i></p> <p>2. INCIDENT STATUS: Provide incident summary (including number of patients) and command structure. <i>Ex: "Communications, I have a Red priority patient, unconscious, struck by a falling tree. Requesting air ambulance to Forest Road 1 at (Lat./Long.) This will be the Trout Meadow Medical, IC is TFLD Jones. EMT Smith is providing medical care."</i></p>																													
Severity of Emergency / Transport Priority	<input type="checkbox"/> RED / PRIORITY 1 Life or limb threatening injury or illness. Evacuation need is IMMEDIATE <i>Ex: Unconscious, difficulty breathing, bleeding severely, 2° – 3° burns more than 4 palm sizes, heat stroke, disoriented.</i> <input type="checkbox"/> YELLOW / PRIORITY 2 Serious Injury or illness. Evacuation may be DELAYED if necessary. <i>Ex: Significant trauma, unable to walk, 2° – 3° burns not more than 1-3 palm sizes.</i> <input type="checkbox"/> GREEN / PRIORITY 3 Minor Injury or illness. Non-Emergency transport <i>Ex: Sprains, strains, minor heat-related illness.</i>																												
Nature of Injury or Illness & Mechanism of Injury			Brief Summary of Injury or Illness <i>(Ex: Unconscious, Struck by Falling Tree)</i>																										
Transport Request			Air Ambulance / Short Haul/Hoist Ground Ambulance / Other																										
Patient Location			Descriptive Location & Lat. / Long. (WGS84)																										
Incident Name			Geographic Name + "Medical" <i>(Ex: Trout Meadow Medical)</i>																										
On-Scene Incident Commander			Name of on-scene IC of Incident within an Incident <i>(Ex: TFLD Jones)</i>																										
Patient Care			Name of Care Provider <i>(Ex: EMT Smith)</i>																										
<p>3. INITIAL PATIENT ASSESSMENT: Complete this section for each patient as applicable (start with the most severe patient)</p> <p>Patient Assessment: See IRPG PAGE 106</p> <p>Treatment:</p>																													
<p>4. TRANSPORT PLAN:</p> <p>Evacuation Location (if different): <i>(Descriptive Location (drop point, intersection, etc.) or Lat. / Long.)</i> Patient's ETA to Evacuation Location:</p> <p>Helispot / Extraction Site Size and Hazards:</p>																													
<p>5. ADDITIONAL RESOURCES / EQUIPMENT NEEDS:</p> <p><i>Example: Paramedic/EMT, Crews, Immobilization Devices, AED, Oxygen, Trauma Bag, IV/Fluid(s), Splints, Rope rescue, Wheeled litter, HAZMAT, Extrinsic :</i></p>																													
<p>6. COMMUNICATIONS: Identify State Air/Ground EMS Frequencies and Hospital Contacts as applicable</p> <table border="1" style="width: 100%; border-collapse: collapse;"> <thead> <tr> <th style="width: 15%;">Function</th> <th style="width: 20%;">Channel Name/Number</th> <th style="width: 15%;">Receive (RX)</th> <th style="width: 15%;">Tone/NAC *</th> <th style="width: 15%;">Transmit (TX)</th> <th style="width: 20%;">Tone/NAC *</th> </tr> </thead> <tbody> <tr> <td>COMMAND</td> <td></td> <td></td> <td></td> <td></td> <td></td> </tr> <tr> <td>AIR-TO-GRND</td> <td></td> <td></td> <td></td> <td></td> <td></td> </tr> <tr> <td>TACTICAL</td> <td></td> <td></td> <td></td> <td></td> <td></td> </tr> </tbody> </table>						Function	Channel Name/Number	Receive (RX)	Tone/NAC *	Transmit (TX)	Tone/NAC *	COMMAND						AIR-TO-GRND						TACTICAL					
Function	Channel Name/Number	Receive (RX)	Tone/NAC *	Transmit (TX)	Tone/NAC *																								
COMMAND																													
AIR-TO-GRND																													
TACTICAL																													
<p>7. CONTINGENCY: Considerations: If primary options fail, what actions can be implemented in conjunction with primary evacuation method? Be thinking ahead. .</p>																													
<p>8. ADDITIONAL INFORMATION: Updates/Changes, etc. .</p>																													
<p>REMEMBER: Confirm ETA's of resources ordered. Act according to your level of training. Be Alert. Keep Calm. Think Clearly. Act Decisively. .</p>																													