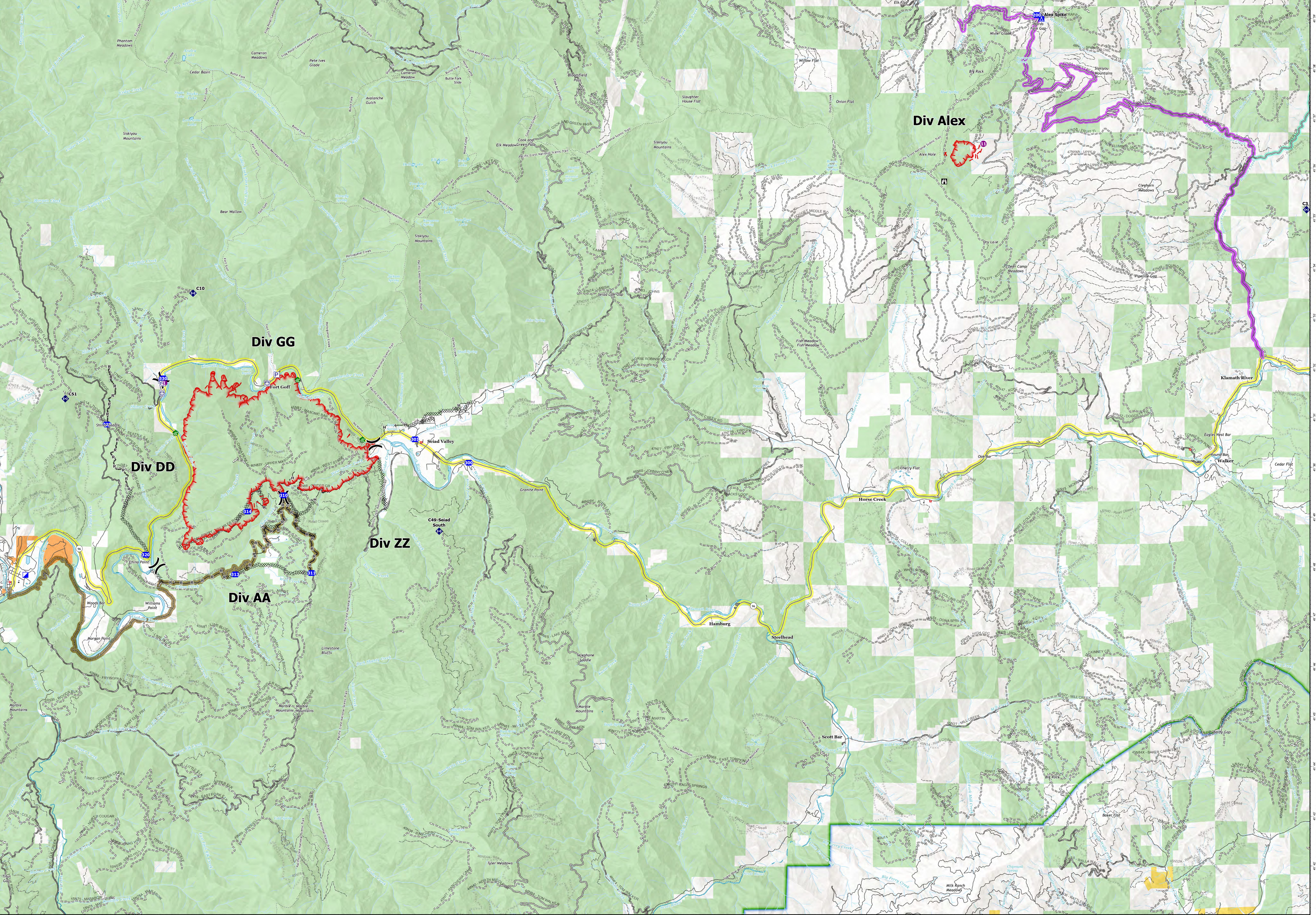


Incident Name	FC Point Type	Label	Latitude WGS84 DDM	Longitude WGS84 DDM
ALEX	Camp	Alex Spike	+41° 59.00275648'	-122° 54.98244354'
ALEX	Drop Point	200	+41° 59.07754885'	-122° 55.10695682'
ALEX	Helispot	11	+41° 56.49531285'	-122° 56.54883201'
ALEX	Lookout		+41° 55.74112715'	-122° 57.601711557'
YETI	Drop Point	300	+41° 50.09353991'	-123° 10.35395915'
YETI	Drop Point	301	+41° 50.55968990'	-123° 11.80048776'
YETI	Drop Point	310	+41° 49.43054526'	-123° 15.31570832'
YETI	Drop Point	311	+41° 47.87280741'	-123° 14.56119438'
YETI	Drop Point	313	+41° 47.84085515'	-123° 16.60973976'
YETI	Drop Point	314	+41° 49.10378345'	-123° 16.28518302'
YETI	Drop Point	320	+41° 48.22831028'	-123° 19.00883402'
YETI	Drop Point	328	+41° 50.83731040'	-123° 20.06083459'
YETI	Drop Point	330	+41° 51.76723054'	-123° 18.56063450'
YETI	Helispot	1	+41° 51.67820025'	-123° 18.52826891'
YETI	Incident Command Post		+41° 47.81350139'	-123° 22.22907468'



- Helispot
- ⎓ Division Break
- 📍 Incident Command Post
- 📍 Drop Point
- 📍 Camp
- 📍 Lookout
- 📍 Water Development or Draft Site
- 📍 Repeater
- 📍 Pump
- 📍 Water Tank
- 📍 Uncontained
- Completed Dozer Line
- Completed Hand Line
- Completed Road as Line
- Main Routes
 - Beaver Creek Road (To Alex)
 - CA-96
 - South Route
 - To I-5 (Hilt)
- Transportation
 - Local Connector
 - Local Road
 - 4WD
 - Trails
- Direct Protection Areas by Agency
 - CDF
 - LOCAL
 - USFS
- Surface Management by Agency
 - Bureau of Indian Affairs (BIA)
 - Bureau of Land Management (BLM)
 - State
 - US Forest Service (USFS)

