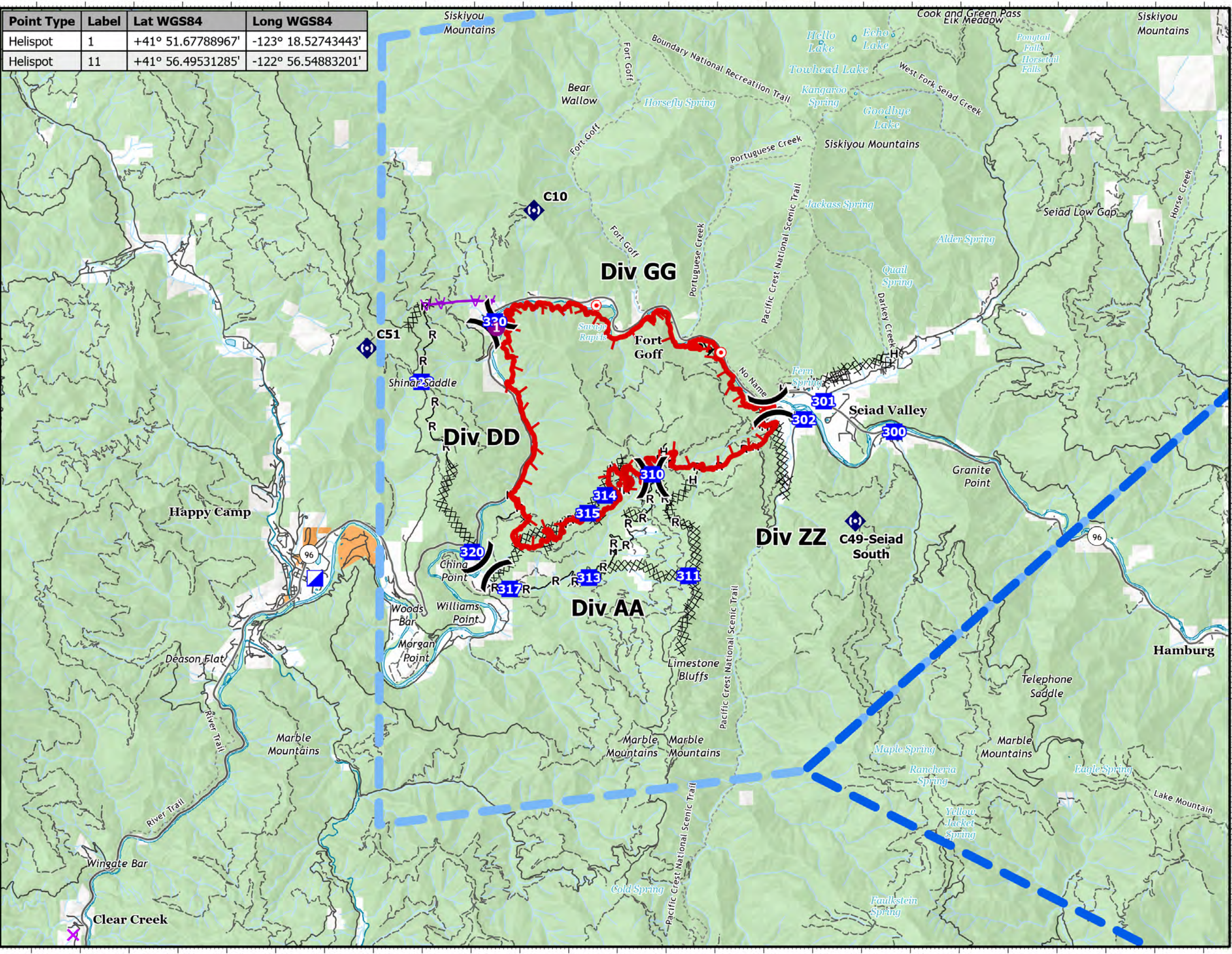


Point Type	Label	Lat WGS84	Long WGS84
Helispot	1	+41° 51.67788967'	-123° 18.52743443'
Helispot	11	+41° 56.49531285'	-122° 56.54883201'

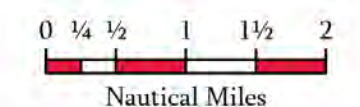
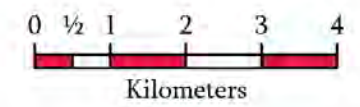
# Pilot Map

**Yeti Fire**  
 CA-KNF-006200  
 August 6, 2022  
 7,570 acres on 8/5 at 21:13



- Intersection Points
- TFR: 2/4959
- TFR: 2/4960
- Helispot
- Division Break
- Incident Command Post
- Drop Point
- Hot Spot - Spot Fire
- Repeater
- Uncontained
- Completed Burnout
- Completed Dozer Line
- Completed Hand Line
- Completed Road as Line
- Aerial Hazard

- Surface Management by Agency
- Bureau of Indian Affairs (BIA)
  - US Forest Service (USFS)



1:100,000  
 Datum: North American 1983

