

Transportation Map

Yeti Fire

CA-KNF-006200

Alex Fire

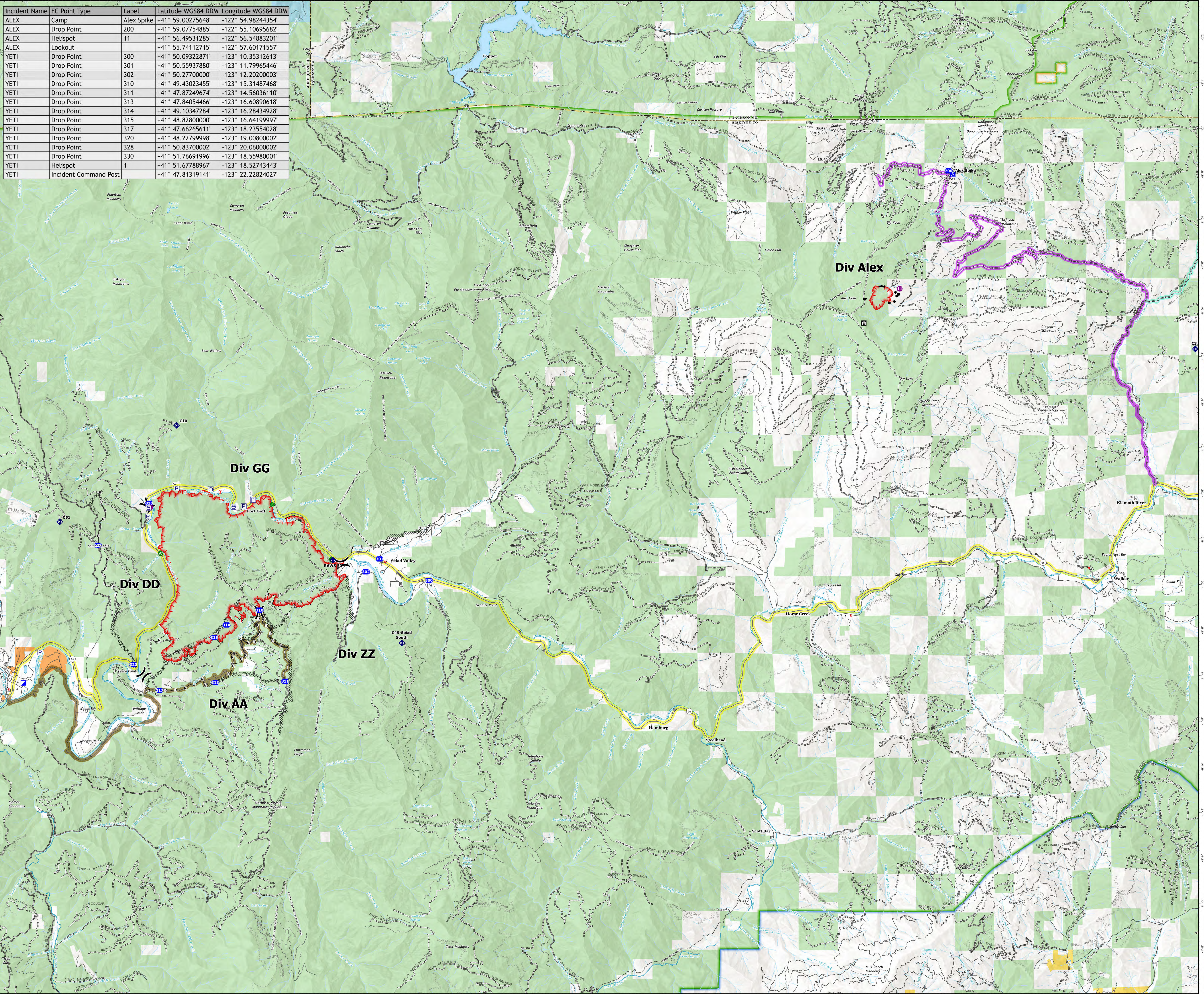
CA-KNF-006290

August 6, 2022

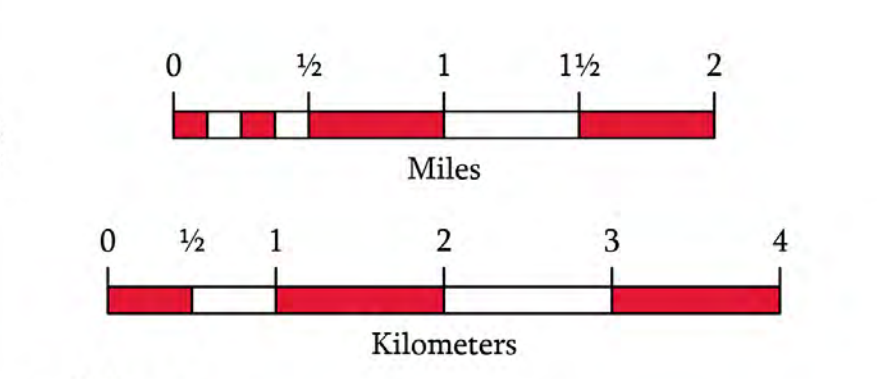
7,570 acres on 8/5 at 21:13

151 acres on 8/5 at 21:29

Incident Name	FC Point Type	Label	Latitude WGS84 DDM	Longitude WGS84 DDM
ALEX	Camp	Alex Spike	+41° 59.00275648'	-122° 54.98244354'
ALEX	Drop Point	200	+41° 59.07754885'	-122° 55.10695682'
ALEX	Helispot	11	+41° 56.49531285'	-122° 56.54883201'
ALEX	Lookout		+41° 55.74112715'	-122° 57.60171557'
YETI	Drop Point	300	+41° 50.09322871'	-123° 10.35312613'
YETI	Drop Point	301	+41° 50.55937880'	-123° 11.79965446'
YETI	Drop Point	302	+41° 50.27700000'	-123° 12.20200003'
YETI	Drop Point	310	+41° 49.43023455'	-123° 15.31487468'
YETI	Drop Point	311	+41° 47.87249674'	-123° 14.56036110'
YETI	Drop Point	313	+41° 47.84054466'	-123° 16.60890618'
YETI	Drop Point	314	+41° 49.10347284'	-123° 16.28434928'
YETI	Drop Point	315	+41° 48.82800000'	-123° 16.64199997'
YETI	Drop Point	317	+41° 47.66265611'	-123° 18.23554028'
YETI	Drop Point	320	+41° 48.22799998'	-123° 19.00800002'
YETI	Drop Point	328	+41° 50.83700002'	-123° 20.06000002'
YETI	Drop Point	330	+41° 51.76691996'	-123° 18.55980001'
YETI	Helispot	1	+41° 51.67788967'	-123° 18.52743443'
YETI	Incident Command Post		+41° 47.81319141'	-123° 22.22824027'



- Helispot
- Division Break
- Incident Command Post
- Drop Point
- Camp
- Lookout
- Hot Spot - Spot Fire
- Water Development or Draft Site
- ♦ Mobile Weather Unit
- ♦ Repeater
- ♦ Pump
- ♦ Water Tank
- Contained
- Uncontained
- Completed Burnout
- Completed Dozer Line
- Completed Hand Line
- Completed Road as Line
- Main Routes**
- Beaver Creek Road (To Alex)
- CA-96
- South Route
- To I-5 (Hilt)
- Transportation**
- Local Connector
- Local Road
- 4WD
- Trails
- Direct Protection Areas by Agency**
- CDF
- LOCAL
- USFS
- Surface Management by Agency**
- Bureau of Indian Affairs (BIA)
- Bureau of Land Management (BLM)
- State
- US Forest Service (USFS)



California Interagency Incident Management Team

1:45,000