

Air Ops Map

Yeti Fire

CA-KNF-006200

Alex Fire

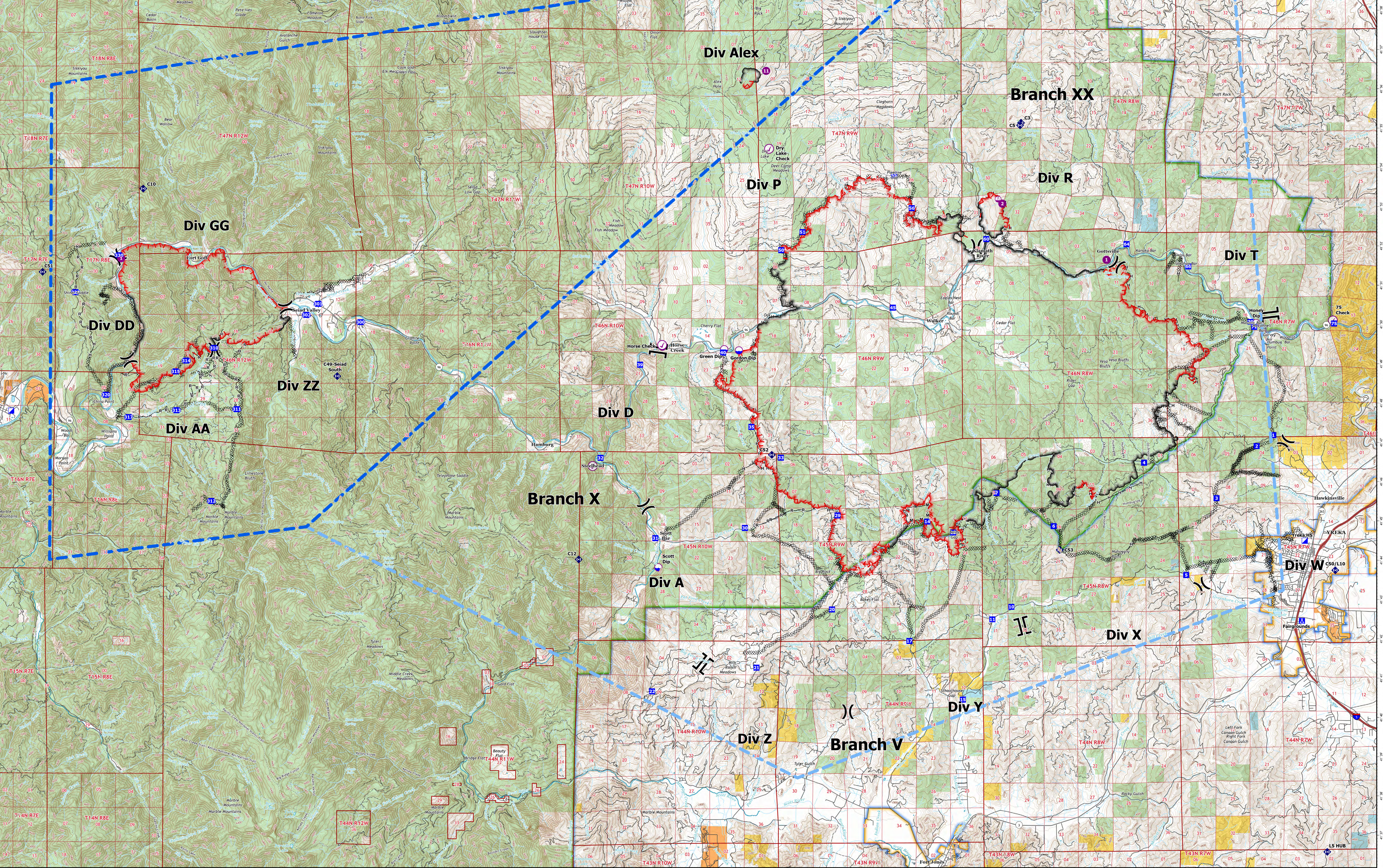
CA-KNF-006290

August 7, 2022

7,870 acres on 8/6 at 21:08

151 acres on 8/6 at 21:15

Incident Name	PC Point Type	Label	Latitude WGS84 DDM	Longitude WGS84 DDM
ALEX	Camp	Alex Spike	+41° 59.00275648	-122° 54.98244354
ALEX	Helispot	T1	+41° 56.49531285	-122° 56.54883201
MCKINNEY	Aviation Check Point	75 Check	41° 50.108' N	122° 37.272' W
MCKINNEY	Aviation Check Point	Dry Lake Check		
MCKINNEY	Aviation Check Point	Horse Check	41° 49.520' N	123° 00.091' W
MCKINNEY	Aviation Check Point	Steelhead Check	41° 46.440' N	123° 02.451' W
MCKINNEY	Camp	Fairgrounds	41.70775208	-122.63940672
MCKINNEY	Camp	Montague Camp	41° 43.683' N	122° 31.282' W
MCKINNEY	Dip Site	Apple Dip	42° 02.390' N	123° 08.171' W
MCKINNEY	Dip Site	Bridge Dip	41° 49.480' N	123° 00.080' W
MCKINNEY	Dip Site	Gordon Dip	41° 49.380' N	122° 57.480' W
MCKINNEY	Dip Site	Green Dip	41° 49.410' N	122° 57.980' W
MCKINNEY	Dip Site	Hitt Dip	41° 59.802' N	122° 38.106' W
MCKINNEY	Dip Site	Honey Dip	41° 50.043' N	122° 39.884' W
MCKINNEY	Dip Site	Mulligan Dip	42° 02.460' N	123° 01.241' W
MCKINNEY	Dip Site	Scott Dip	41° 43.860' N	123° 00.221' W
MCKINNEY	Helispot	T1	41° 51.673' N	122° 44.966' W
MCKINNEY	Helispot	Z	41° 53.107' N	122° 48.513' W
MCKINNEY	Incident Command Post	Yreka HS	41.74174777	-122.63766339
MCKINNEY	Repeater	C12	41° 44.062' N	123° 02.924' W
MCKINNEY	Repeater	C5	41° 55.100' N	122° 47.902' W
MCKINNEY	Repeater	C50/L10	41° 43.750' N	122° 37.226' W
MCKINNEY	Repeater	C52		
MCKINNEY	Repeater	C53	41° 44.256' N	122° 46.652' W
MCKINNEY	Repeater	L5 HUB	41° 36.581' N	122° 37.541' W
MCKINNEY	Sling Site			
YETI	Helispot	1	+41° 51.70390256	-123° 18.50811515
YETI	Incident Command Post		+41° 47.81319141	-123° 22.22824027
YETI	Repeater	C10	+41° 53.47700002	-123° 17.76399997
YETI	Repeater	C3	+41° 55.16431356	-122° 47.86883042
YETI	Repeater	C49-Seiad South	+41° 48.71900001	-123° 11.14409997
YETI	Repeater	C51	+41° 51.34999998	-123° 21.18000000



- TFR: 2/4959
- TFR: 2/4960
- Intersection Points
- Aviation Check Point
- Dip Site
- Helispot
- Sling Site
- Division Break
- Branch Break
- Incident Command Post
- Drop Point
- Camp
- Repeater
- Contained
- Uncontained
- Completed Dozer Line
- Completed Hand Line
- Completed Mixed Construction Line
- Completed Road as Line
- Direct Protection Areas by Agency
- CDF
- LOCAL
- USFS
- Surface Management by Agency
- Bureau of Indian Affairs (BIA)
- Bureau of Land Management (BLM)
- Department of Defense (DOD)
- National Park Service (NPS)
- State
- US Forest Service (USFS)

0 1/4 1/2 1 1 1/2 2
Nautical Miles

0 1/2 1 2 3 4
Kilometers

1:60,000

Datum: North American 1983