

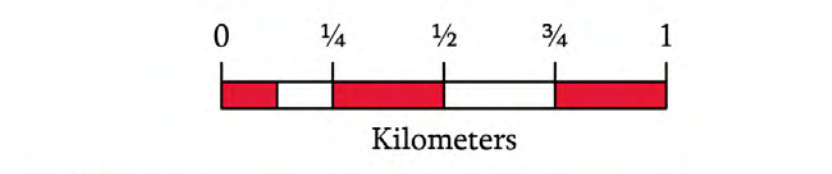
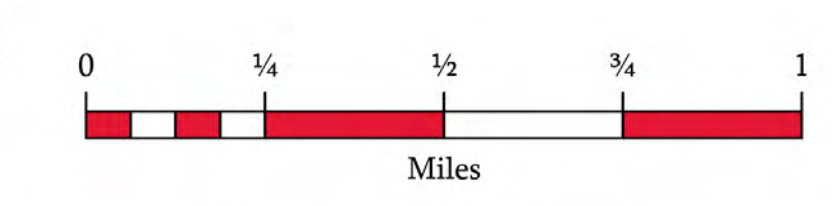
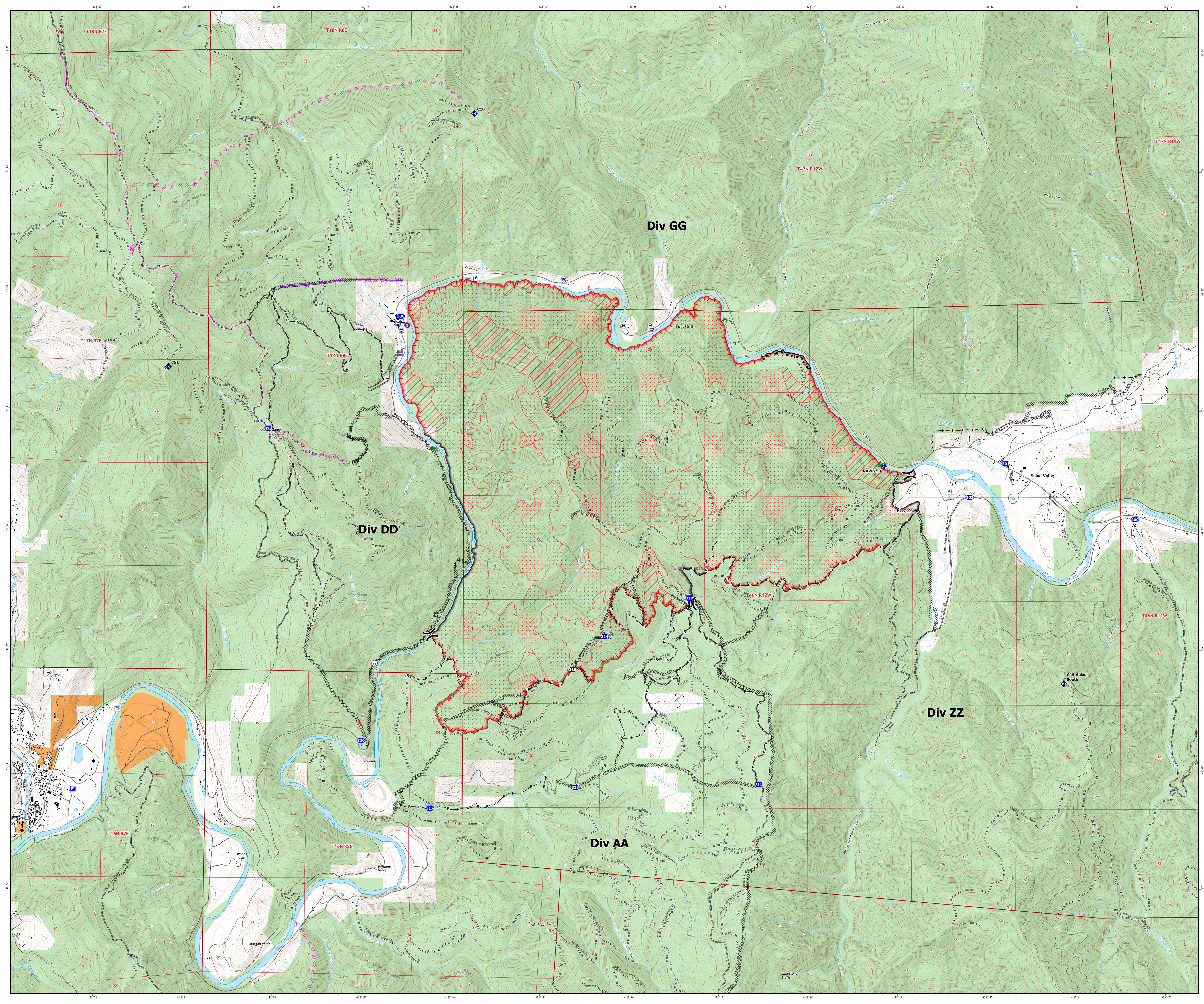
Operations Map

Yeti Fire CA-KNF-006200

August 7, 2022
7,870 acres on 8/6 at 21:08

Yeti: 19% Containment

- Helisport
- ⌋ Division Break
- ⌋ Incident Command Post
- ⌋ Drop Point
- ⊙ Hot Spot - Spot Fire
- ⊙ Water Development or Draft Site
- ⊙ Mobile Weather Unit
- ⊙ Repeater
- ⊙ Pump
- ⊙ Water Tank
- ▭ Contained
- ▭ Uncontained
- ▭ Completed Burnout
- ▭ Completed Dozer Line
- ▭ Completed Hand Line
- ▭ Completed Road as Line
- ▭ Planned Dozer Line
- ▭ Planned Hand Line
- ▭ Planned Road as Line
- ▭ Road Repair
- ▭ Aerial Hazard
- ▭ IR Intense Heat
- ▭ IR Scattered Heat
- ▭ Structures
- Transportation
 - ▭ Local Connector
 - ▭ Local Road
 - ▭ 4WD
- Surface Management by Agency
 - ▭ Bureau of Indian Affairs (BIA)
 - ▭ US Forest Service (USFS)



California Interagency Incident Management Team

1:17,000

Datum: North American 1983