

Air Ops Map

Yeti Fire

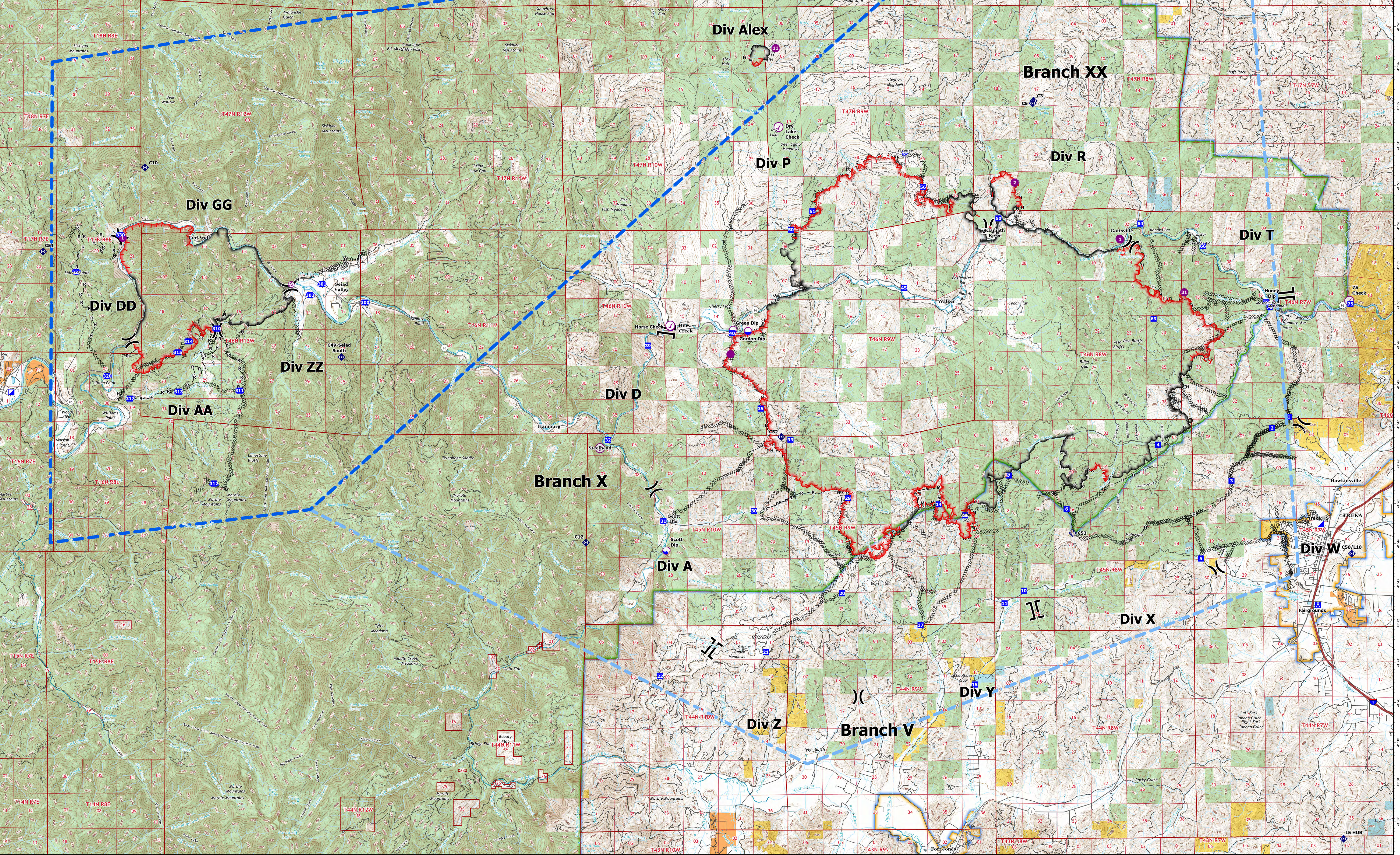
CA-KNF-006200

Alex Fire

CA-KNF-006290

August 8, 2022
7,885 acres on 8/7 at 20:53
151 acres on 8/7 at 21:08

Incident Name	FC Point Type	Label	Latitude WGS84 DDM	Longitude WGS84 DDM
ALEX	Camp	Alex Spike	+41° 59.00275648	-122° 54.98244354
ALEX	Helispot	T1	+41° 59.49531285	-122° 56.54883201
MCKINNEY	Aviation Check Point	75 Check	+41° 50.108 N	-122° 37.772 W
MCKINNEY	Aviation Check Point	Dry Lake Check	+41° 54.514 N	-122° 56.451 W
MCKINNEY	Aviation Check Point	Horse Check	+41° 49.520 N	-123° 00.091 W
MCKINNEY	Aviation Check Point	Steelhead Check	+41° 46.440 N	-123° 02.451 W
MCKINNEY	Camp	Fairgrounds	+41° 42.465 N	-122° 38.365 W
MCKINNEY	Camp	Klamath River Spike		
MCKINNEY	Dip Site	Apple Dip	+42° 02.390 N	-123° 08.171 W
MCKINNEY	Dip Site	Bridge Dip	+41° 49.480 N	-123° 00.081 W
MCKINNEY	Dip Site	Gordon Dip	+41° 49.380 N	-122° 57.481 W
MCKINNEY	Dip Site	Green Dip	+41° 49.410 N	-122° 57.981 W
MCKINNEY	Dip Site	Hilt Dip	+41° 59.802 N	-122° 38.106 W
MCKINNEY	Dip Site	Honey Dip	+41° 50.044 N	-122° 39.885 W
MCKINNEY	Dip Site	Mulligan Dip	+42° 02.460 N	-123° 01.241 W
MCKINNEY	Dip Site	Scott Dip	+41° 43.860 N	-123° 00.221 W
MCKINNEY	Helispot	1	+41° 51.689 N	-122° 44.983 W
MCKINNEY	Helispot	2	+41° 51.673 N	-122° 44.966 W
MCKINNEY	Helispot	31	+41° 53.107 N	-122° 48.513 W
MCKINNEY	Incident Command Post	Yreka H5	+41° 44.505 N	-122° 38.261 W
MCKINNEY	Repeater	C12	+41° 44.062 N	-123° 02.924 W
MCKINNEY	Repeater	C5	+41° 55.100 N	-122° 47.902 W
MCKINNEY	Repeater	C50/L10	+41° 43.750 N	-122° 37.226 W
MCKINNEY	Repeater	C52	+41° 46.725 N	-122° 56.364 W
MCKINNEY	Repeater	C53	+41° 44.293 N	-122° 46.584 W
MCKINNEY	Repeater	L5 HUB	+41° 36.581 N	-122° 37.541 W
MCKINNEY	Helispot		+41° 48.802 N	-122° 58.069 W
YETI	Aerial Hazard	1	+41° 50.54700002	-123° 12.83600000
YETI	Helispot		+41° 51.70390236	-123° 18.50811515
YETI	Incident Command Post		+41° 47.81319141	-123° 22.23282027
YETI	Repeater	C10	+41° 53.47700002	-123° 17.76399997
YETI	Repeater	C3	+41° 55.16431356	-122° 47.86883042
YETI	Repeater	C49-Seiad South	+41° 48.71900001	-123° 11.14499997
YETI	Repeater	C51	+41° 51.34999998	-123° 21.18000000



- TFR: 2/4959
- TFR: 2/4960
- Intersection Points
- Aerial Hazard
- Aviation Check Point
- Dip Site
- Helispot
- Division Break
- Branch Break
- Incident Command Post
- Drop Point
- Camp
- Repeater
- Contained
- Uncontained
- Completed Dozer Line
- Completed Hand Line
- Completed Mixed Construction Line
- Completed Road as Line
- Direct Protection Areas by Agency
- CDF
- LOCAL
- USFS
- Surface Management by Agency
- Bureau of Indian Affairs (BIA)
- Bureau of Land Management (BLM)
- Department of Defense (DOD)
- National Park Service (NPS)
- State
- US Forest Service (USFS)

0 1/4 1/2 1 1 1/2 2
Nautical Miles

0 1/2 1 2 3 4
Kilometers

1:60,000
Datum: North American 1983