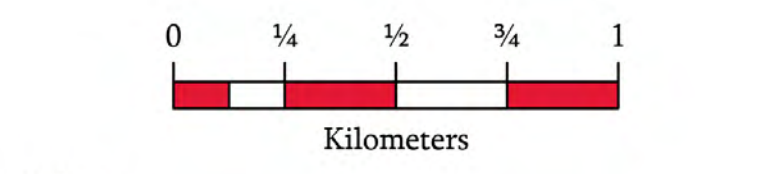
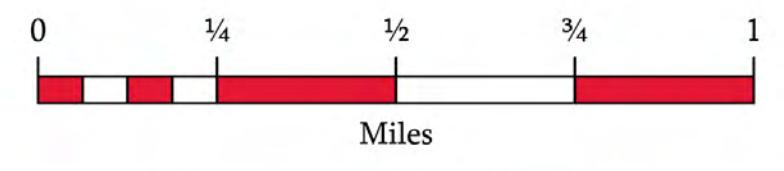
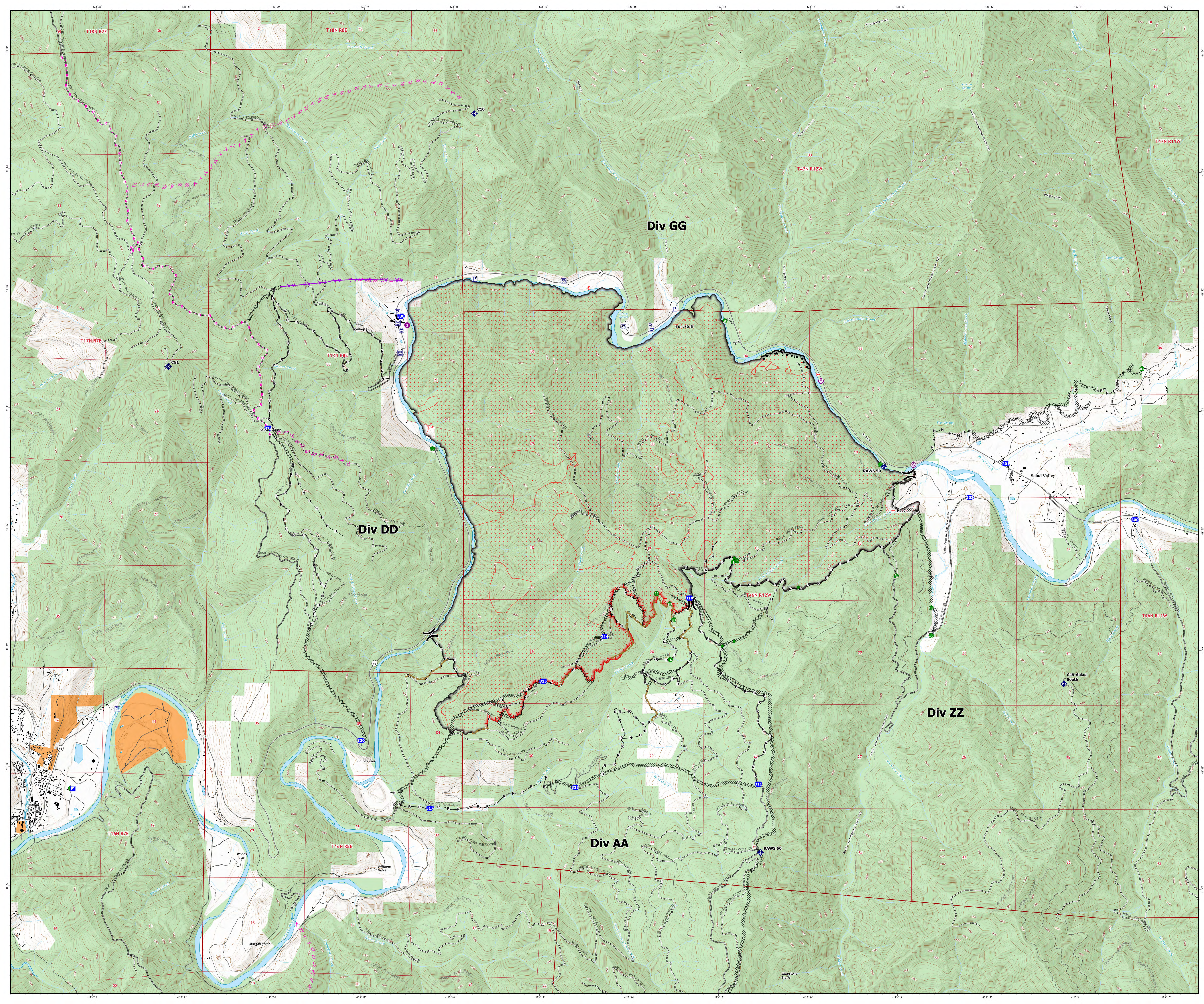


Yeti: 79% Containment

- Aerial Hazard
- Helispot
- Division Break
- Incident Command Post
- Drop Point
- Hot Spot - Spot Fire
- Water Development or Draft Site
- Stream Crossing
- Road Repair
- Repair Point
- Fence - Cut/Damaged
- Dozer Push
- Culvert
- Mobile Weather Unit
- Repeater
- Pump
- Water Tank
- IR Isolated Heat Source
- Contained
- Uncontained
- Completed Burnout
- Completed Dozer Line
- Completed Hand Line
- Completed Road as Line
- Planned Dozer Line
- Planned Road as Line
- Road Repair
- Aerial Hazard
- IR Intense Heat
- IR Scattered Heat
- Structures
- Transportation**
 - Local Connector
 - Local Road
 - 4WD
- Surface Management by Agency**
 - Bureau of Indian Affairs (BIA)
 - US Forest Service (USFS)



1:17,000
Datum: North American 1983