

Point Type	Label	Lat WGS84	Long WGS84
Helispot	1	+41° 51.70390256'	-123° 18.50811515'
Helispot	11	+41° 56.49531285'	-122° 56.54883201'
Aerial Hazard		+41° 50.54700002'	-123° 12.83600000'
Aerial Hazard		+41° 51.24799997'	-123° 13.87200002'

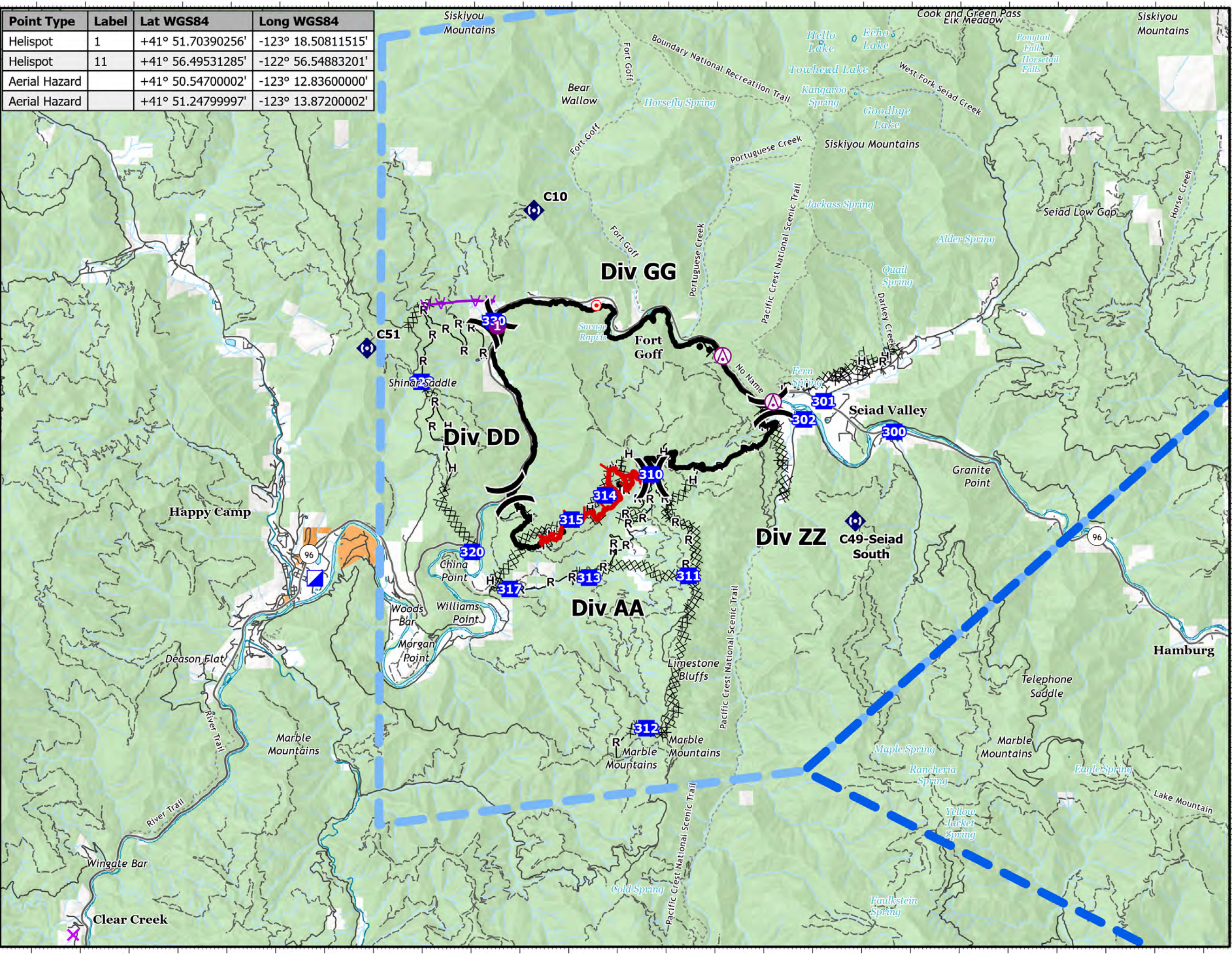
Pilot Map

Yeti Fire

CA-KNF-006200

August 9, 2022

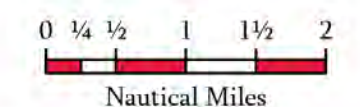
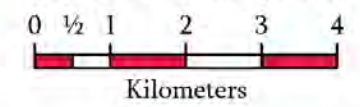
7,886 acres on 8/8 at 21:23



- Intersection Points
- TFR: 2/4959
- TFR: 2/4960
- Aerial Hazard
- Helispot
- Division Break
- Incident Command Post
- Drop Point
- Hot Spot - Spot Fire
- Repeater
- Contained
- Uncontained
- Completed Burnout
- Completed Dozer Line
- Completed Hand Line
- Completed Road as Line
- Aerial Hazard

Surface Management by Agency

- Bureau of Indian Affairs (BIA)
- US Forest Service (USFS)



1:100,000

Datum: North American 1983

