

Transportation Map

Yeti Fire

CA-KNF-006200

Alex Fire

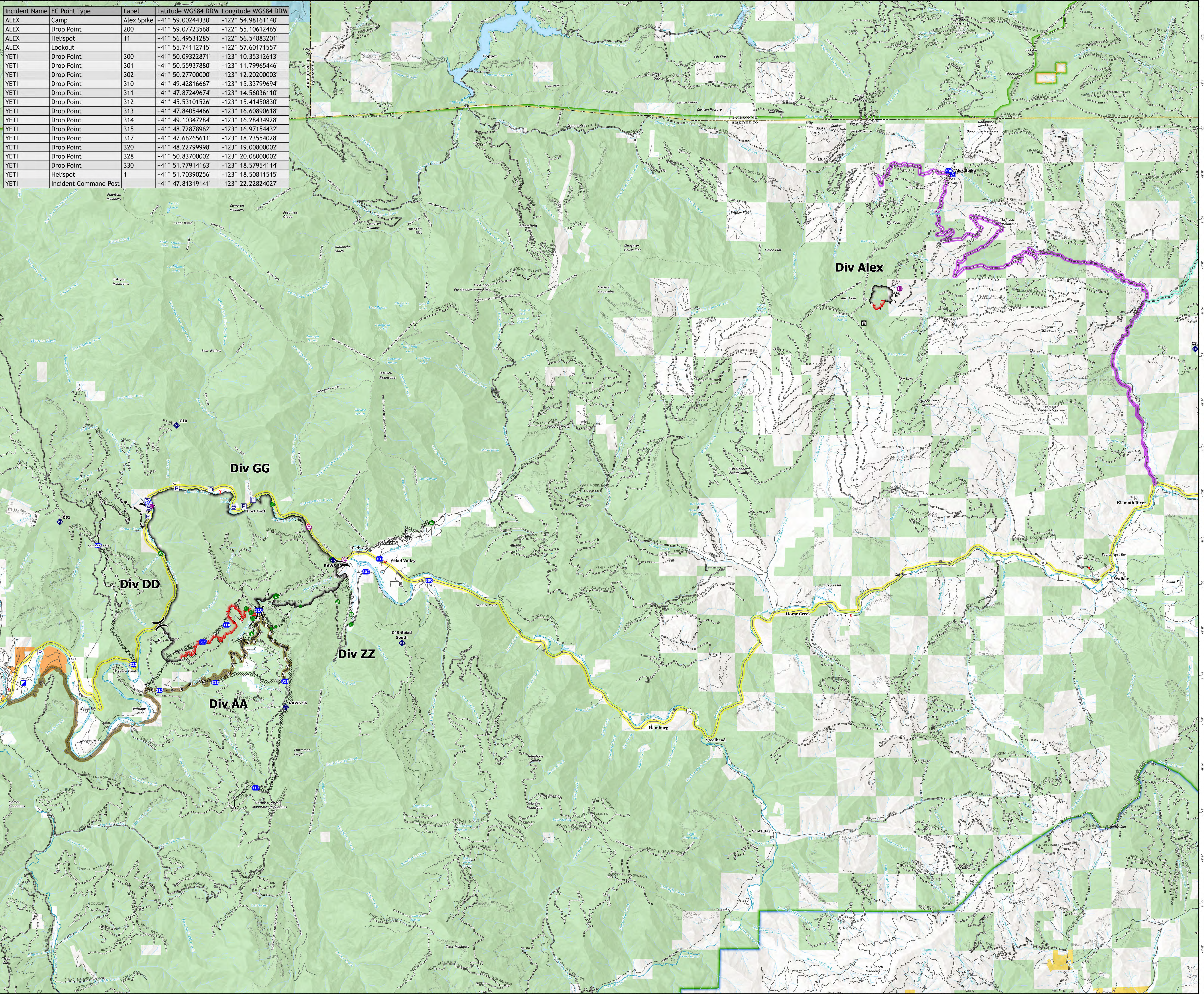
CA-KNF-006290

August 9, 2022

7,886 acres on 8/8 at 21:23

151 acres on 8/7 at 21:08

| Incident Name | FC Point Type | Label | Latitude WGS84 DDM | Longitude WGS84 DDM |
|---------------|-----------------------|------------|--------------------|---------------------|
| ALEX | Camp | Alex Spike | +41° 59.00244330' | -122° 54.98161140' |
| ALEX | Drop Point | 200 | +41° 59.07723568' | -122° 55.10612465' |
| ALEX | Helispot | 11 | +41° 56.49531285' | -122° 56.54883201' |
| ALEX | Lookout | | +41° 55.74112715' | -122° 57.60171557' |
| YETI | Drop Point | 300 | +41° 50.09322871' | -123° 10.35312613' |
| YETI | Drop Point | 301 | +41° 50.55937880' | -123° 11.79965446' |
| YETI | Drop Point | 302 | +41° 50.27700000' | -123° 12.20200003' |
| YETI | Drop Point | 310 | +41° 49.42816667' | -123° 15.33799694' |
| YETI | Drop Point | 311 | +41° 47.87249674' | -123° 14.56036110' |
| YETI | Drop Point | 312 | +41° 45.53101526' | -123° 15.41450830' |
| YETI | Drop Point | 313 | +41° 47.84054466' | -123° 16.60890618' |
| YETI | Drop Point | 314 | +41° 49.10347284' | -123° 16.28434928' |
| YETI | Drop Point | 315 | +41° 48.72878962' | -123° 16.97154432' |
| YETI | Drop Point | 317 | +41° 47.66265611' | -123° 18.23554028' |
| YETI | Drop Point | 320 | +41° 48.22799998' | -123° 19.00800002' |
| YETI | Drop Point | 328 | +41° 50.83700002' | -123° 20.06000002' |
| YETI | Drop Point | 330 | +41° 51.77914163' | -123° 18.57954114' |
| YETI | Helispot | 1 | +41° 51.70390256' | -123° 18.50811515' |
| YETI | Incident Command Post | | +41° 47.81319141' | -123° 22.22824027' |



- Aerial Hazard
- Helispot
- Division Break
- Incident Command Post
- Drop Point
- Camp
- Lookout
- Hot Spot - Spot Fire
- Water Development or Draft Site
- Stream Crossing
- Road Repair
- Repair Point
- Fence - Cut/Damaged
- Dozer Push
- Culvert
- Mobile Weather Unit
- Repeater
- Pump
- Water Tank
- Contained
- Uncontained
- Completed Burnout
- Completed Dozer Line
- Completed Hand Line
- Completed Road as Line
- Main Routes**
 - Beaver Creek Road (To Alex)
 - CA-96
 - South Route
 - To I-5 (Hilt)
- Transportation**
 - Local Connector
 - Local Road
 - 4WD
 - Trails
- Direct Protection Areas by Agency**
 - CDF
 - LOCAL
 - USFS
- Surface Management by Agency**
 - Bureau of Indian Affairs (BLA)
 - Bureau of Land Management (BLM)
 - State
 - US Forest Service (USFS)

0 1/2 1 1 1/2 2
Miles

0 1/2 1 2 3 4
Kilometers

California Interagency
Incident Management Team

1:45,000