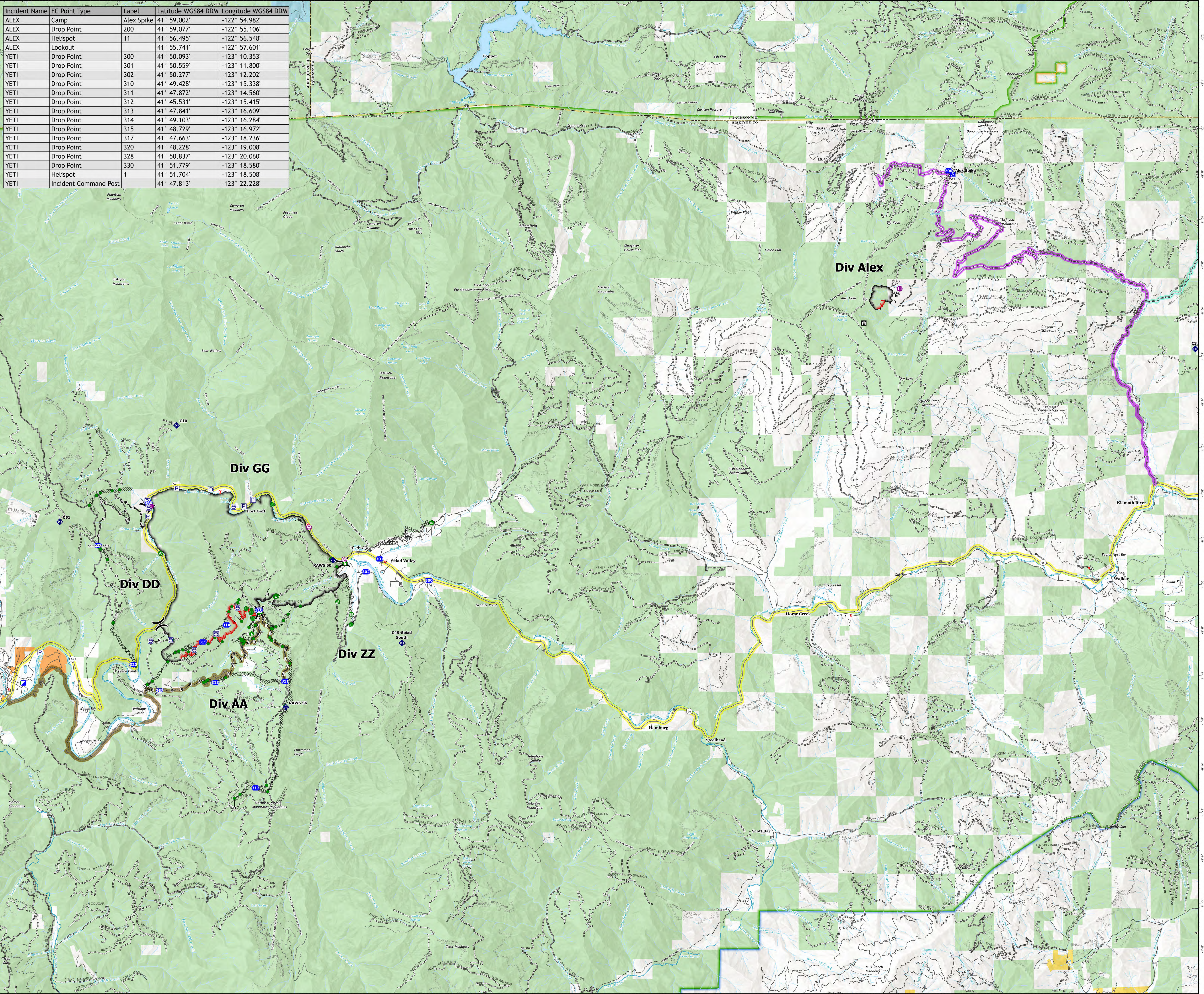
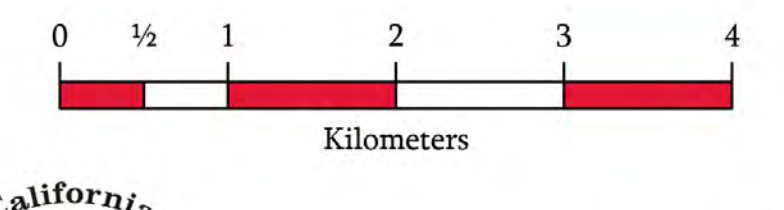
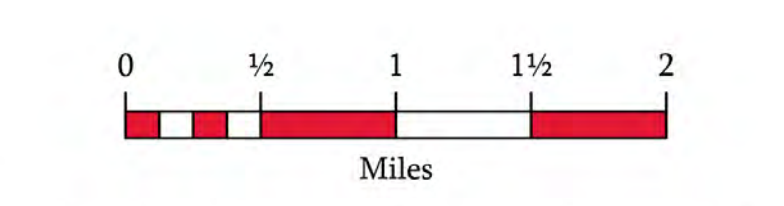


Incident Name	FC Point Type	Label	Latitude WGS84 DDM	Longitude WGS84 DDM
ALEX	Camp	Alex Spike	41° 59.002'	-122° 54.982'
ALEX	Drop Point	200	41° 59.077'	-122° 55.106'
ALEX	Helispot	11	41° 56.495'	-122° 56.548'
ALEX	Lookout		41° 55.741'	-122° 57.601'
YETI	Drop Point	300	41° 50.093'	-123° 10.353'
YETI	Drop Point	301	41° 50.559'	-123° 11.800'
YETI	Drop Point	302	41° 50.277'	-123° 12.202'
YETI	Drop Point	310	41° 49.428'	-123° 15.338'
YETI	Drop Point	311	41° 47.872'	-123° 14.560'
YETI	Drop Point	312	41° 45.531'	-123° 15.415'
YETI	Drop Point	313	41° 47.841'	-123° 16.609'
YETI	Drop Point	314	41° 49.103'	-123° 16.284'
YETI	Drop Point	315	41° 48.729'	-123° 16.972'
YETI	Drop Point	317	41° 47.663'	-123° 18.236'
YETI	Drop Point	320	41° 48.228'	-123° 19.008'
YETI	Drop Point	328	41° 50.837'	-123° 20.060'
YETI	Drop Point	330	41° 51.779'	-123° 18.580'
YETI	Helispot	1	41° 51.704'	-123° 18.508'
YETI	Incident Command Post		41° 47.813'	-123° 22.228'



- Aerial Hazard
- Helispot
- Division Break
- Incident Command Post
- Drop Point
- Camp
- Lookout
- Hot Spot - Spot Fire
- Water Development or Draft Site
- Stream Crossing
- Road Repair
- Repair Point
- Fence - Cut/Damaged
- Dozer Push
- Culvert
- Mobile Weather Unit
- Repeater
- Other Property
- Pump
- Water Tank
- Contained
- Uncontained
- Completed Burnout
- Completed Dozer Line
- Completed Hand Line
- Completed Road as Line
- Main Routes**
- Beaver Creek Road (To Alex)
- CA-96
- South Route
- To I-5 (Hilt)
- Transportation**
- Local Connector
- Local Road
- 4WD
- Trails
- Direct Protection Areas by Agency**
- CDF
- LOCAL
- USFS
- Surface Management by Agency**
- Bureau of Indian Affairs (BLA)
- Bureau of Land Management (BLM)
- State
- US Forest Service (USFS)



1:45,000

