

Air Ops Map

Yeti Fire

CA-KNF-006200

Alex Fire

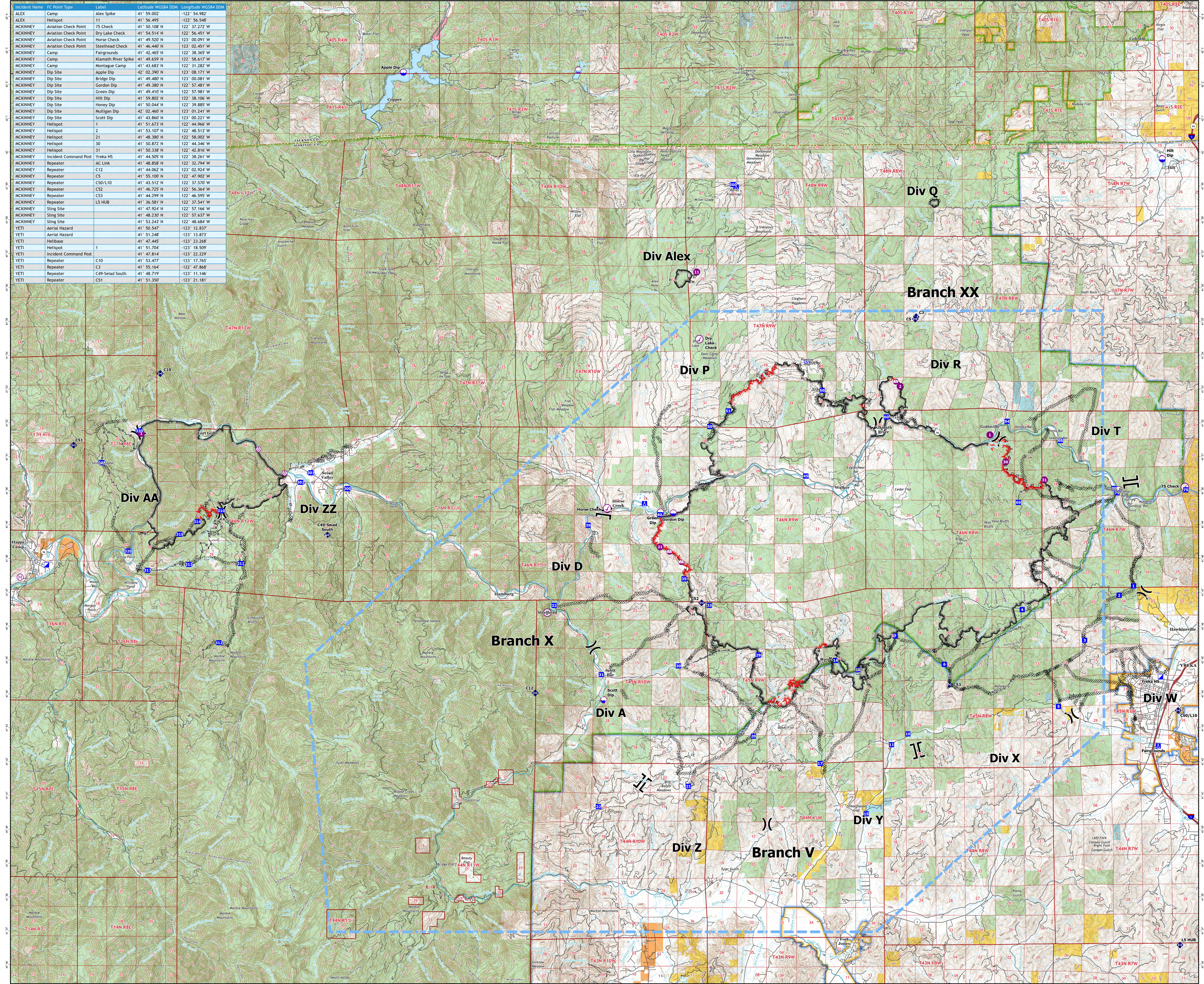
CA-KNF-006290

August 12, 2022

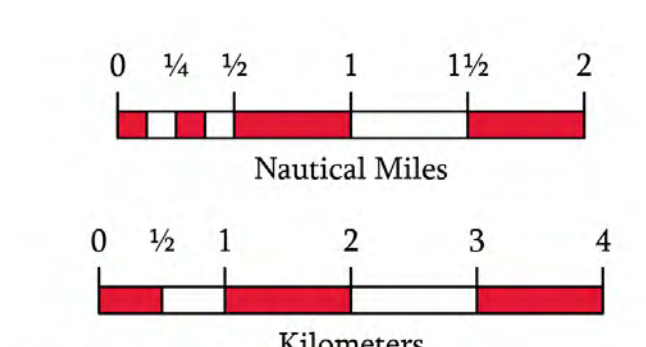
7,886 acres on 8/11 at 21:28

151 acres on 8/11 at 21:37

Incident Name	FC Point Type	Label	Latitude WGS84 DDM	Longitude WGS84 DDM
ALEX	Camp	Alex Spike	41° 59.002' N	122° 54.982' W
ALEX	Helispot		41° 58.651' N	122° 56.548' W
MCKINNEY	Aviation Check Point	75 Check	41° 50.108' N	122° 37.272' W
MCKINNEY	Aviation Check Point	Dry Lake Check	41° 54.514' N	122° 56.451' W
MCKINNEY	Aviation Check Point	Horse Check	41° 49.520' N	123° 00.091' W
MCKINNEY	Aviation Check Point	Steelhead Check	41° 46.440' N	123° 02.451' W
MCKINNEY	Fairgrounds		41° 42.465' N	122° 38.365' W
MCKINNEY	Camp	Klamath River Spike	41° 58.659' N	122° 58.617' W
MCKINNEY	Camp	Montage Camp	41° 43.683' N	122° 51.282' W
MCKINNEY	Dip Site	Apple Dip	42° 02.390' N	123° 08.171' W
MCKINNEY	Dip Site	Bridge Dip	41° 49.480' N	123° 00.081' W
MCKINNEY	Dip Site	Gordon Dip	41° 49.380' N	122° 57.981' W
MCKINNEY	Dip Site	Green Dip	41° 49.410' N	122° 57.981' W
MCKINNEY	Dip Site	Hilt Dip	41° 59.802' N	122° 38.106' W
MCKINNEY	Dip Site	Honey Dip	41° 50.044' N	122° 39.885' W
MCKINNEY	Dip Site	Mulligan Dip	42° 02.460' N	123° 01.241' W
MCKINNEY	Dip Site	Scott Dip	41° 43.863' N	123° 02.231' W
MCKINNEY	Helispot	1	41° 51.673' N	122° 44.966' W
MCKINNEY	Helispot	2	41° 53.107' N	122° 48.513' W
MCKINNEY	Helispot	21	41° 48.380' N	122° 58.002' W
MCKINNEY	Helispot	30	41° 50.872' N	122° 44.346' W
MCKINNEY	Helispot	31	41° 50.338' N	122° 42.816' W
MCKINNEY	Incident Command Post	Yreka HS	41° 44.505' N	122° 38.261' W
MCKINNEY	Repeater	AC Link	41° 48.858' N	122° 33.946' W
MCKINNEY	Repeater	C12	41° 44.062' N	122° 02.524' W
MCKINNEY	Repeater	C5	41° 55.100' N	122° 47.902' W
MCKINNEY	Repeater	C50/L10	41° 43.512' N	122° 37.570' W
MCKINNEY	Repeater	C52	41° 46.722' N	122° 56.364' W
MCKINNEY	Repeater	C53	41° 44.299' N	122° 46.595' W
MCKINNEY	Repeater	LS HUB	41° 36.581' N	122° 37.541' W
MCKINNEY	Sling Site		41° 47.924' N	122° 57.166' W
MCKINNEY	Sling Site		41° 48.232' N	122° 57.637' W
MCKINNEY	Sling Site		41° 53.243' N	122° 48.684' W
YETI	Aerial Hazard		41° 50.547' N	123° 12.837' W
YETI	Aerial Hazard		41° 51.248' N	123° 13.873' W
YETI	Helibase		41° 47.445' N	123° 23.268' W
YETI	Helispot	1	41° 51.704' N	123° 18.509' W
YETI	Incident Command Post		41° 47.814' N	123° 22.229' W
YETI	Repeater	C10	41° 53.477' N	123° 17.765' W
YETI	Repeater	C3	41° 55.164' N	122° 47.868' W
YETI	Repeater	C49-Seiad South	41° 48.719' N	123° 11.146' W
YETI	Repeater	C51	41° 51.350' N	123° 21.181' W



- TFR: 2/8537
- Intersection Points
- Aerial Hazard
- Aviation Check Point
- Dip Site
- Helispot
- Helibase
- Sling Site
- Division Break
- Branch Break
- Incident Command Post
- Drop Point
- Camp
- Repeater
- Contained
- Uncontained
- Completed Dozer Line
- Completed Hand Line
- Completed Mixed Construction Line
- Completed Road as Line
- Direct Protection Areas by Agency
 - CDF
 - LOCAL
 - USFS
- Surface Management by Agency
 - Bureau of Indian Affairs (BIA)
 - Bureau of Land Management (BLM)
 - Department of Defense (DOD)
 - State
 - US Forest Service (USFS)



1:60,000
Datum: North American 1983