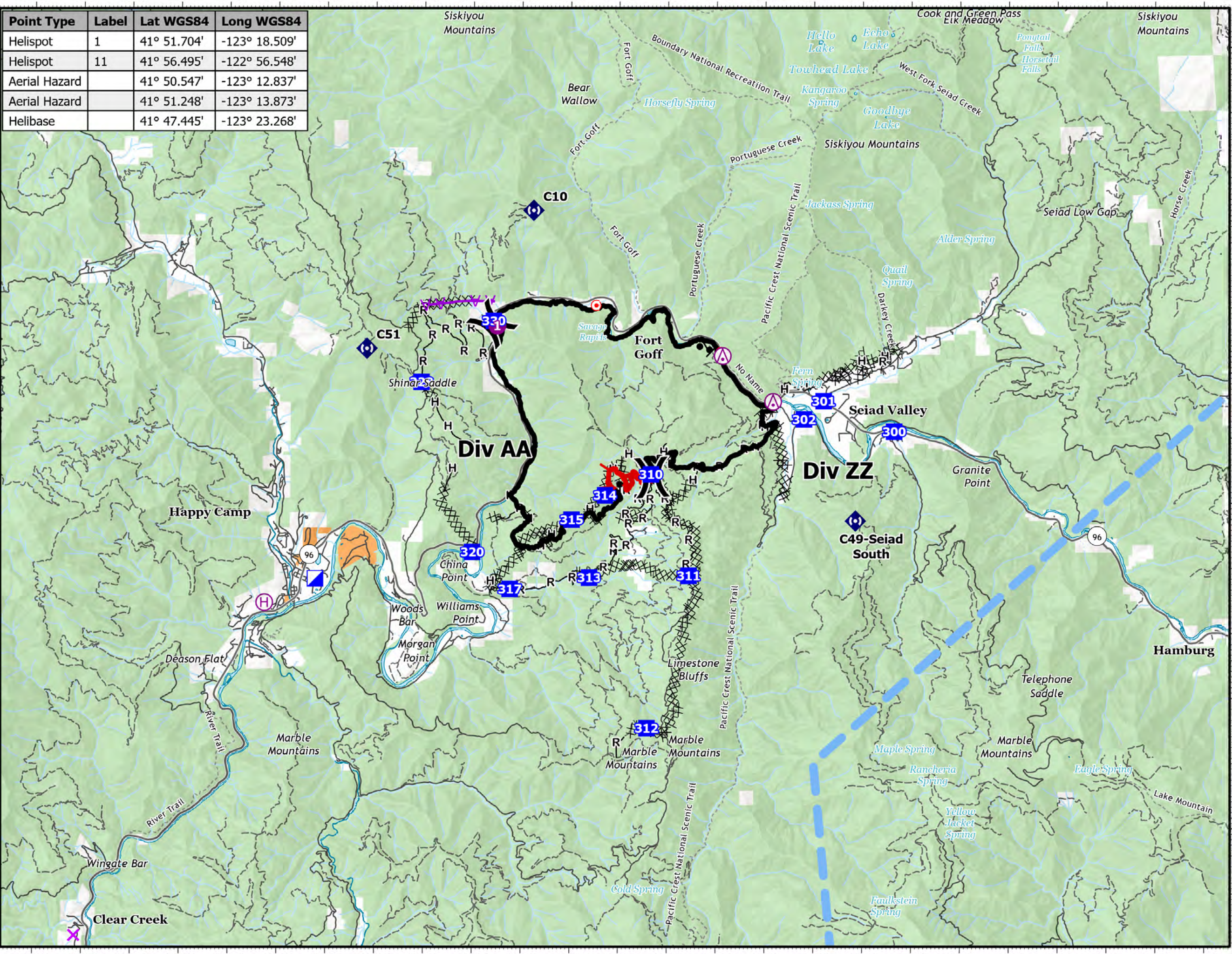


Point Type	Label	Lat WGS84	Long WGS84
Helispot	1	41° 51.704'	-123° 18.509'
Helispot	11	41° 56.495'	-122° 56.548'
Aerial Hazard		41° 50.547'	-123° 12.837'
Aerial Hazard		41° 51.248'	-123° 13.873'
Helibase		41° 47.445'	-123° 23.268'

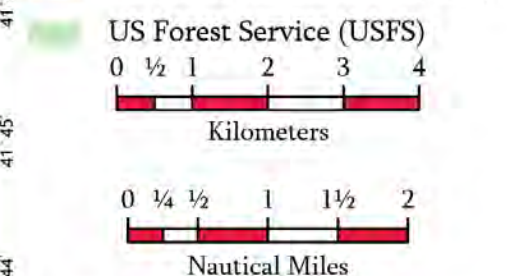
# Pilot Map

**Yeti Fire**  
 CA-KNF-006200  
 August 12, 2022  
 7,886 acres on 8/11 at 21:28



- Intersection Points
- TFR: 2/8537
- Aerial Hazard
- Helispot
- Helibase
- Division Break
- Incident Command Post
- Drop Point
- Hot Spot - Spot Fire
- Repeater
- Contained
- Uncontained
- Completed Burnout
- Completed Dozer Line
- Completed Hand Line
- Completed Road as Line
- Aerial Hazard

**Surface Management by Agency**



1:100,000  
 Datum: North American 1983