

Point Type	Label	Lat WGS84	Long WGS84
Helispot	1	41° 51.704'	-123° 18.509'
Helispot	11	41° 56.495'	-122° 56.548'
Aerial Hazard		41° 50.547'	-123° 12.837'
Aerial Hazard		41° 51.248'	-123° 13.873'
Helibase		41° 47.445'	-123° 23.268'

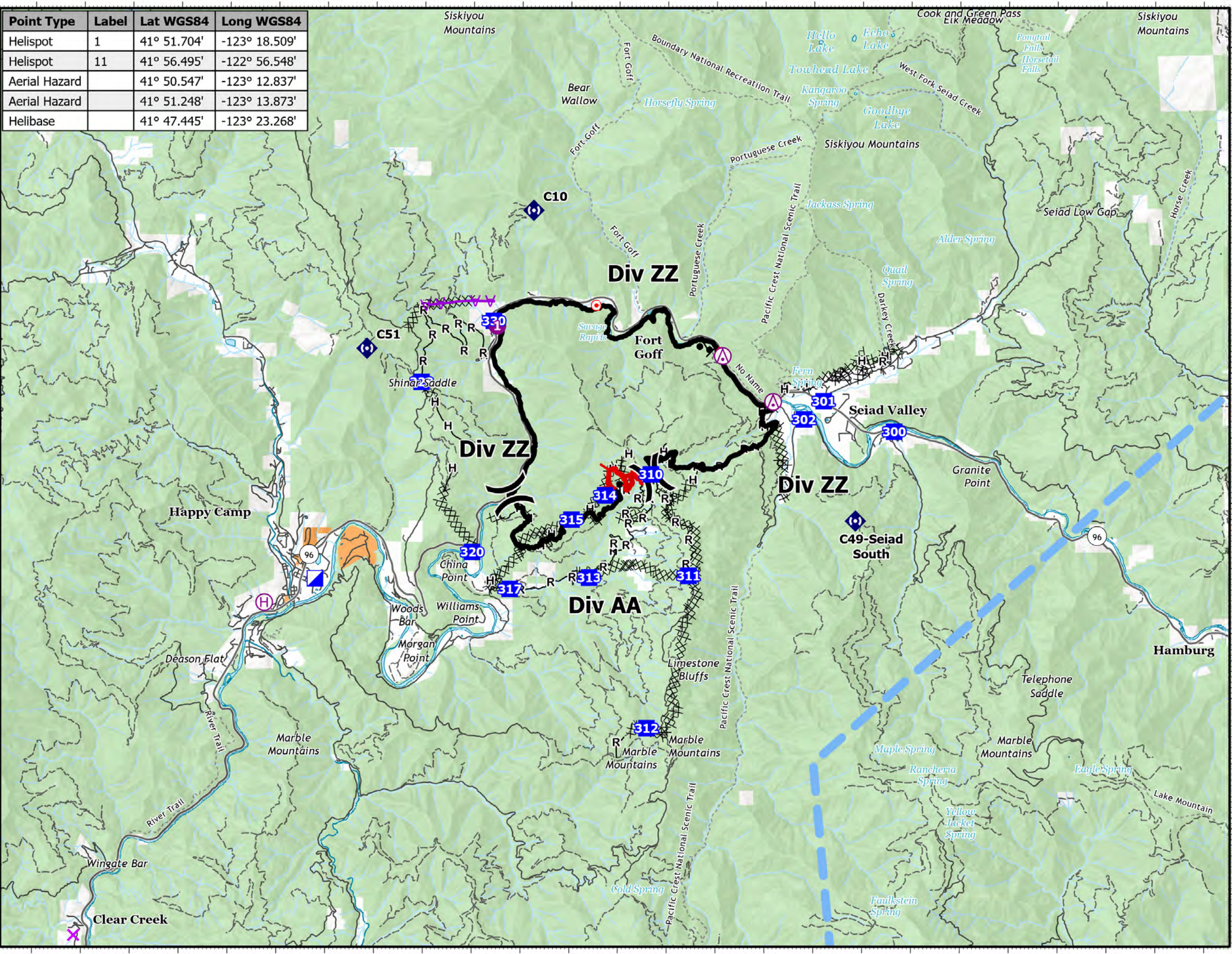
Pilot Map

Yeti Fire

CA-KNF-006200

August 13, 2022

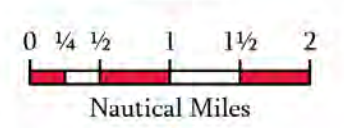
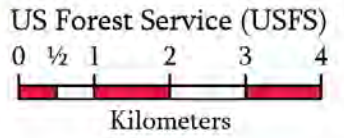
7,886 acres on 8/12 at 21:16



- Intersection Points
- TFR: 2/8537
- Aerial Hazard
- Helispot
- Helibase
- Division Break
- Incident Command Post
- Drop Point
- Hot Spot - Spot Fire
- Repeater
- Contained
- Uncontained
- Completed Burnout
- Completed Dozer Line
- Completed Hand Line
- Completed Road as Line
- Aerial Hazard

Surface Management by Agency

- Bureau of Indian Affairs (BIA)
- US Forest Service (USFS)



1:100,000

Datum: North American 1983

