

Transportation Map

Yeti Fire

CA-KNF-006200

Alex Fire

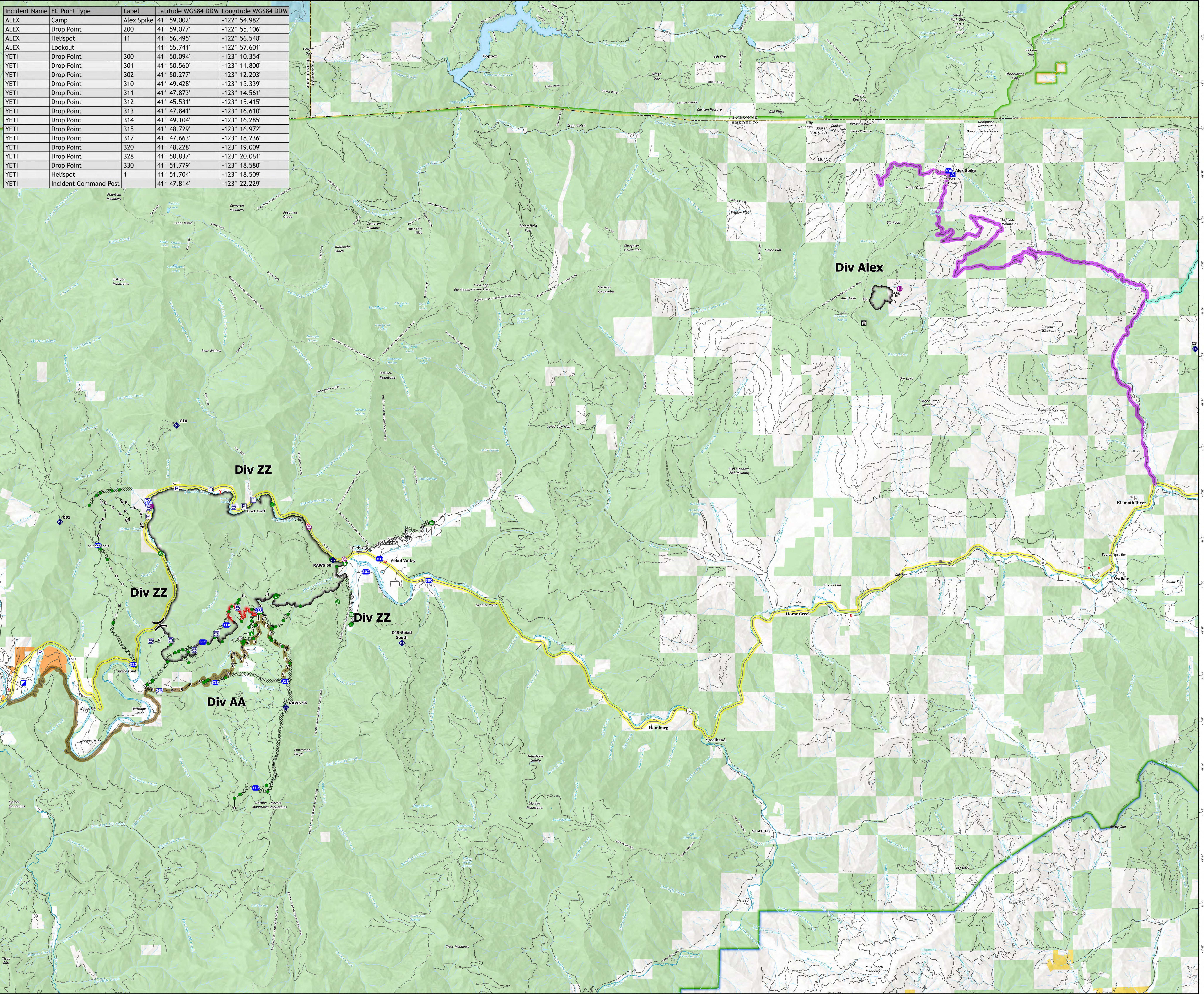
CA-KNF-006290

August 13, 2022

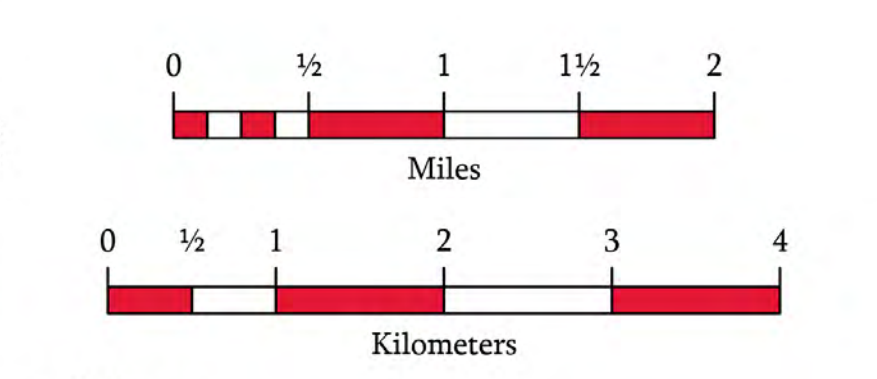
7,886 acres on 8/12 at 21:16

151 acres on 8/12 at 21:24

| Incident Name | FC Point Type | Label | Latitude WGS84 DDM | Longitude WGS84 DDM |
|---------------|-----------------------|------------|--------------------|---------------------|
| ALEX | Camp | Alex Spike | 41° 59.002' | -122° 54.982' |
| ALEX | Drop Point | 200 | 41° 59.077' | -122° 55.106' |
| ALEX | Helispot | 11 | 41° 56.495' | -122° 56.548' |
| ALEX | Lookout | | 41° 55.741' | -122° 57.601' |
| YETI | Drop Point | 300 | 41° 50.094' | -123° 10.354' |
| YETI | Drop Point | 301 | 41° 50.560' | -123° 11.800' |
| YETI | Drop Point | 302 | 41° 50.277' | -123° 12.203' |
| YETI | Drop Point | 310 | 41° 49.428' | -123° 15.339' |
| YETI | Drop Point | 311 | 41° 47.873' | -123° 14.561' |
| YETI | Drop Point | 312 | 41° 45.531' | -123° 15.415' |
| YETI | Drop Point | 313 | 41° 47.841' | -123° 16.610' |
| YETI | Drop Point | 314 | 41° 49.104' | -123° 16.285' |
| YETI | Drop Point | 315 | 41° 48.729' | -123° 16.972' |
| YETI | Drop Point | 317 | 41° 47.663' | -123° 18.236' |
| YETI | Drop Point | 320 | 41° 48.228' | -123° 19.009' |
| YETI | Drop Point | 328 | 41° 50.837' | -123° 20.061' |
| YETI | Drop Point | 330 | 41° 51.779' | -123° 18.580' |
| YETI | Helispot | 1 | 41° 51.704' | -123° 18.509' |
| YETI | Incident Command Post | | 41° 47.814' | -123° 22.229' |



- Aerial Hazard
- Helispot
- Division Break
- Incident Command Post
- Drop Point
- Camp
- Lookout
- Hot Spot - Spot Fire
- Gate
- Water Development or Draft Site
- Stream Crossing
- Road Repair
- Repair Point
- Fence - Cut/Damaged
- Dozer Push
- Culvert
- Mobile Weather Unit
- Repeater
- Other Property
- Pump
- Water Tank
- Contained
- Uncontained
- Completed Burnout
- Completed Dozer Line
- Completed Hand Line
- Completed Road as Line
- Main Routes**
- Beaver Creek Road (To Alex)
- CA-96
- South Route
- To I-5 (Hilt)
- Transportation**
- Local Connector
- Local Road
- 4WD
- Trails
- Direct Protection Areas by Agency**
- CDF
- LOCAL
- USFS
- Surface Management by Agency**
- Bureau of Indian Affairs (BIA)
- Bureau of Land Management (BLM)
- State
- US Forest Service (USFS)



California Interagency Incident Management Team

1:45,000