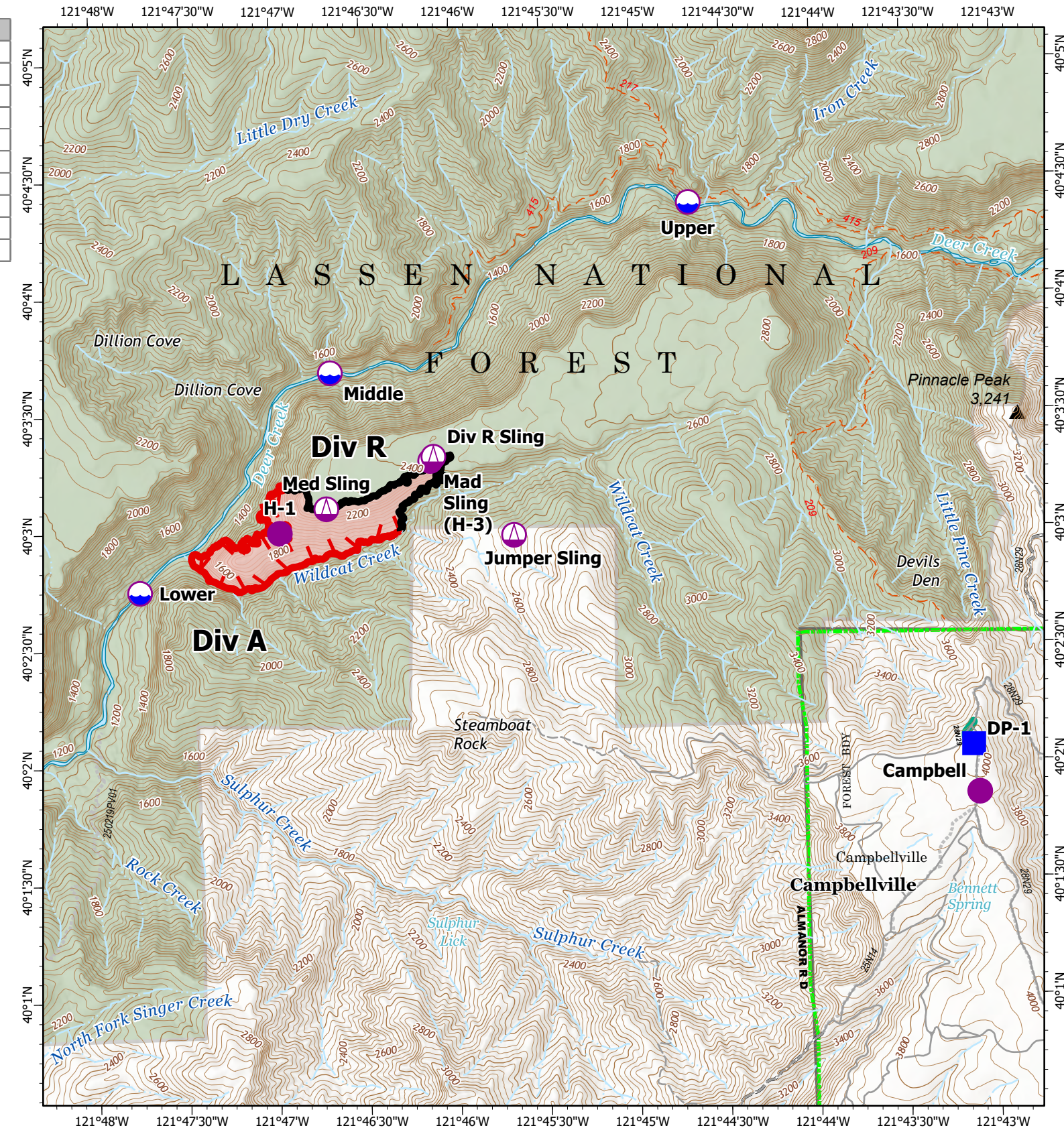


FeatureCat	Label	Comments	ElevationF	LatWGS84_D	LongWGS84_
Helispot	H-1			40° 02.998' N	121° 46.970' W
Drop Point	DP-1				
Dip Site	Upper	T1 use 150' Long line /T2 use 100' Long Line		40° 04.390' N	121° 44.680' W
Dip Site	Middle	T1 use 150' Long line /T2 use 100' Long Line		40° 03.680' N	121° 46.680' W
Dip Site	Lower	T1 use 150' Long line /T2 use 100' Long Line		40° 02.750' N	121° 47.750' W
Sling Site	Jumper Sling	Sling for Jumpers	2,589	40° 02.980' N	121° 45.670' W
Helispot	Campbell	Approved for T2 and T3 Aircraft	4,007	40° 01.860' N	121° 43.103' W
Sling Site	Med Sling (H-2)	Sling for Tahoe, Diamond Mountain, Shasta Lake	2,327	40° 03.100' N	121° 46.710' W
Sling Site	Mad Sling (H-3)	Sling for Mad River, Feather River, Plumas IHC	2,413	40° 03.300' N	121° 46.130' W
Sling Site	Div R Sling	Overhead coordinates being relayed over command.		40° 03.318' N	121° 46.112' W



Air Operations

- Dip Site
- Helispot

Logistics

- Sling Site
- Drop Point

Contained

- Contained

Uncontained

- Uncontained
- Wildfire Daily Fire Perimeter

0 0.75 1.5 Miles

