

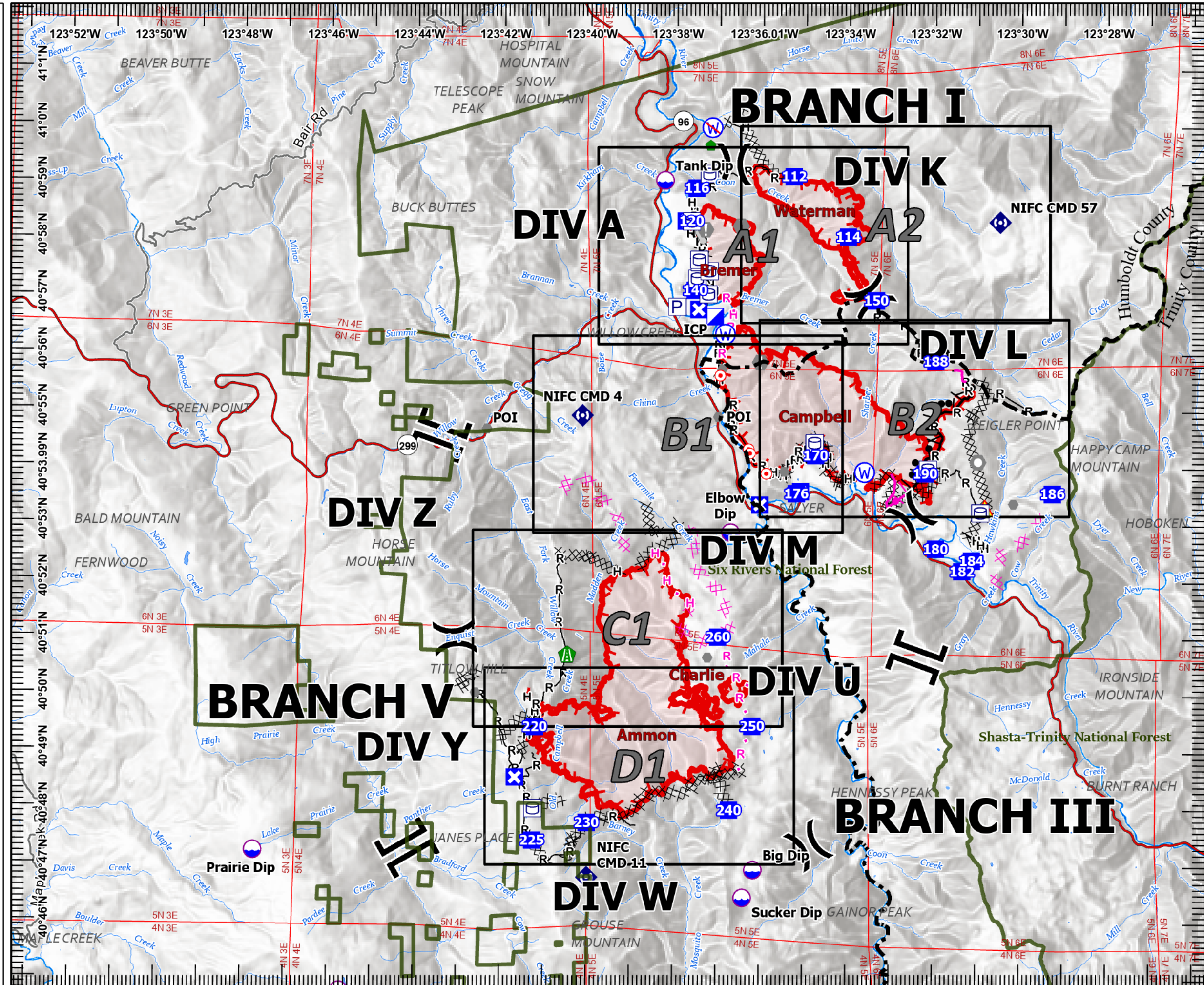
IAP 2022 SRF Lightning Complex

CA-SRF-000620

8/12/2022

Index

- | | | | |
|--|---------------------------------|--|-----------------------------------|
| | Other Property | | Mobile Weather Unit |
| | Pump | | Internet Access |
| | Water Tank | | Repeater |
| | Aerial Hazard | | Safety Zone |
| | Airstrip or Airport | | Hazard |
| | Aviation Check Point | | Water Source |
| | Dip Site | | Restricted Water Source |
| | Mobile Retardant Base | | Contained |
| | Helispot | | Uncontained |
| | Helibase | | Completed Burnout |
| | Sling Site | | Completed Dozer Line |
| | Unimproved Landing Area | | Completed Fuel Break |
| | Division Break | | Completed Hand Line |
| | Branch Break | | Completed Mixed Construction Line |
| | Zone Break | | Completed Plow Line |
| | Medical | | Completed Road as Line |
| | Incident Command Post | | Planned Burnout |
| | Drop Point | | Planned Dozer Line |
| | Closure | | Planned Fuel Break |
| | Camp | | Planned Hand Line |
| | Staging Area | | Planned Mixed Construction Line |
| | Lookout | | Planned Plow Line |
| | Hot Spot - Spot Fire | | Planned Road as Line |
| | Fire Origin | | Planned Secondary Line |
| | Value at Risk | | Access or Improved Road |
| | Other | | Fence |
| | Landmark | | Highlighted Feature |
| | Gate | | Management Action Point |
| | Fire Station | | Other |
| | Bridge | | Repair Line |
| | Water Development or Draft Site | | Road Repair |
| | Structure Wrap | | Escape Route |
| | Stream Crossing | | Aerial Hazard |
| | Road Repair | | Water Drop |
| | Retardant in Avoidance Area | | Foam Drop |
| | Resource Location | | Retardant Drop |
| | Repair Point | | Aviation Route |
| | Landing or Log Deck | | UAS Launch and Recovery Zone |
| | Hazard Tree | | Temporary Flight Restriction |
| | Fence - Cut/Damaged | | Fire Edge (Field Collection) |
| | Dozer Push | | Other |
| | Culvert | | Prescribed Fire |
| | Clean Up Area | | Wildfire Daily Fire Perimeter |

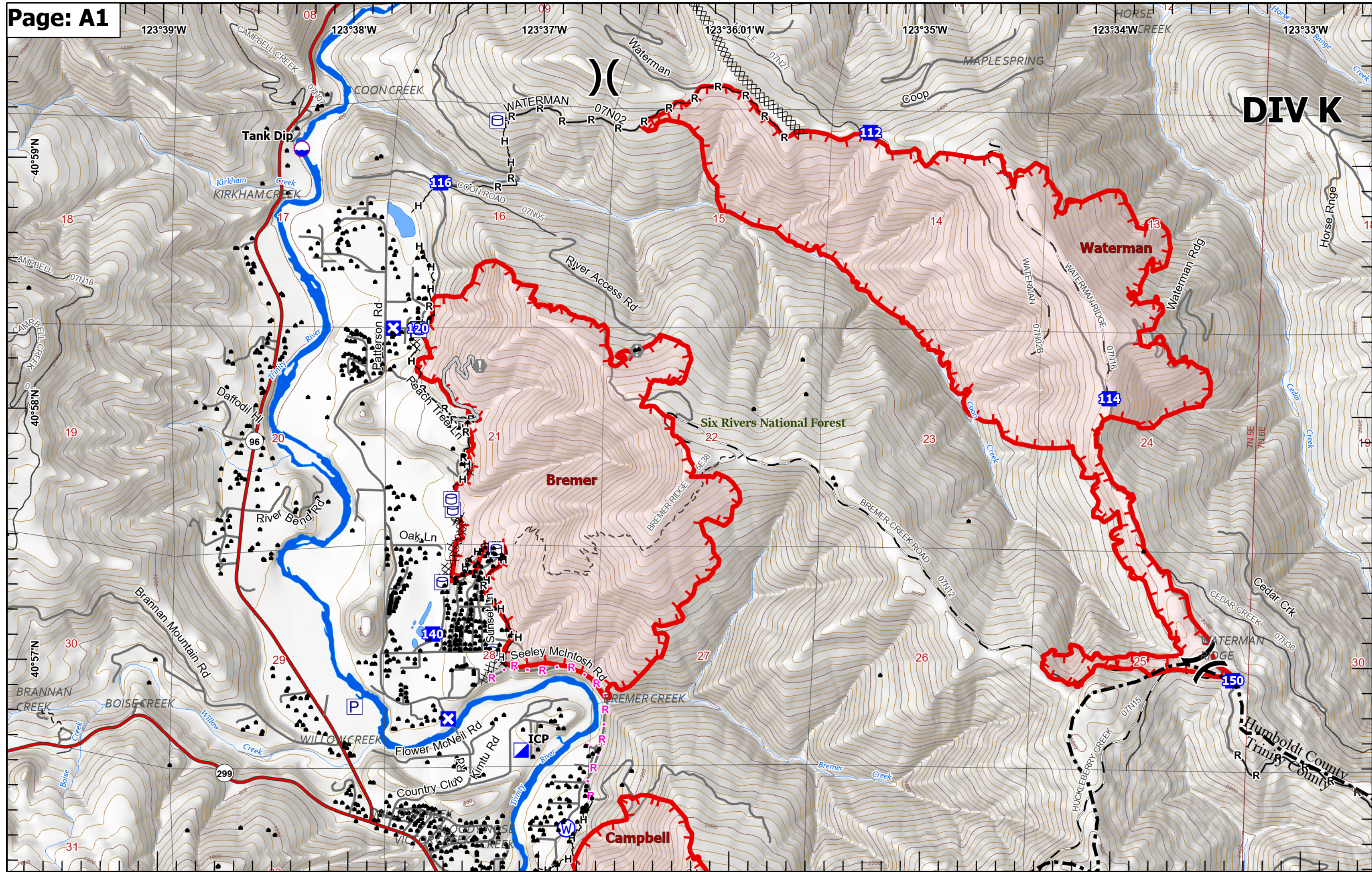


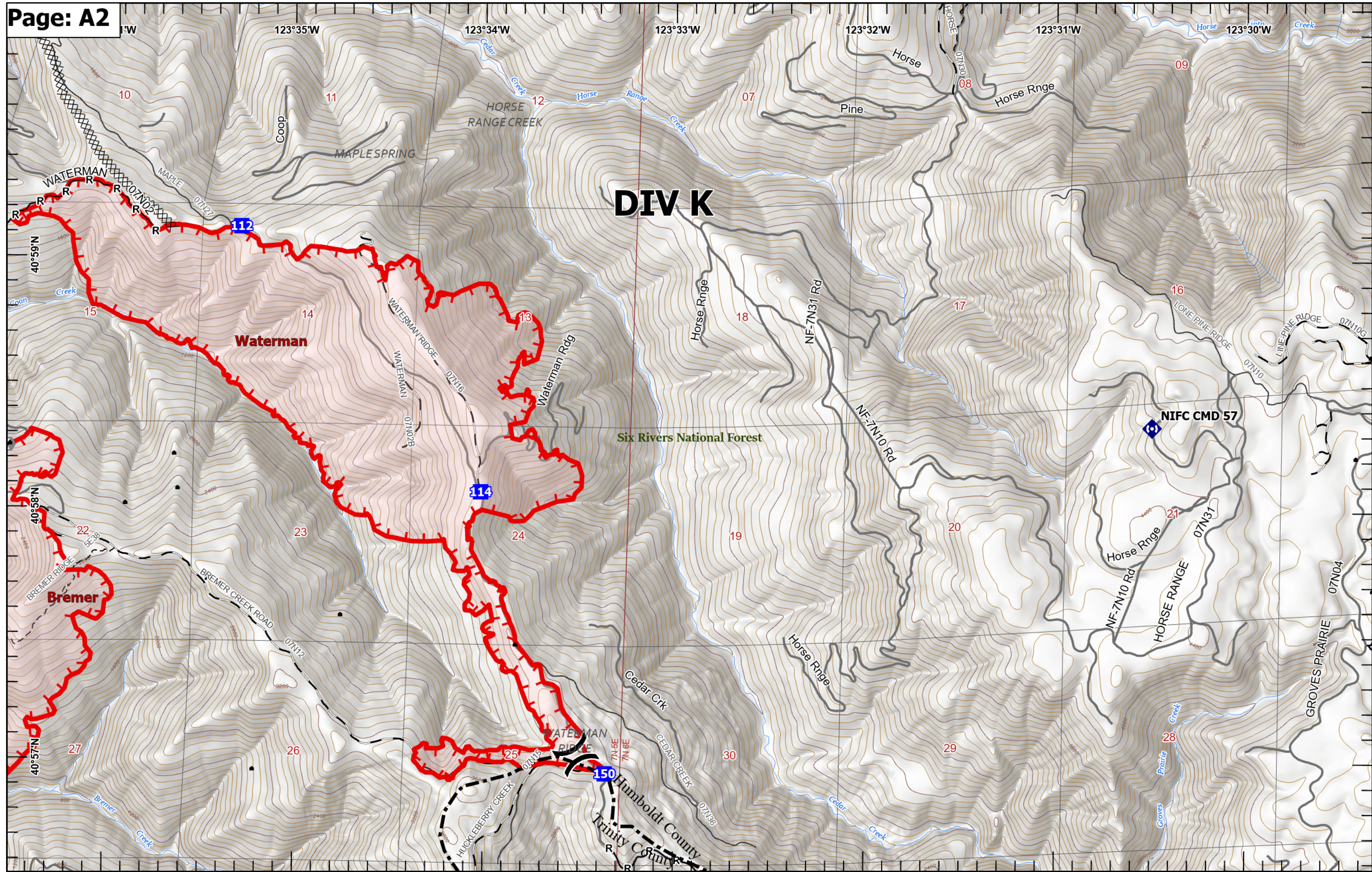
Miles

0 1/4 2/2

1:120,000

Last Updated
8/12/2022
00:43





DIV K

Waterman

Bremer

Six Rivers National Forest

NIFC CMD 57

Humboldt County
Trinity County

