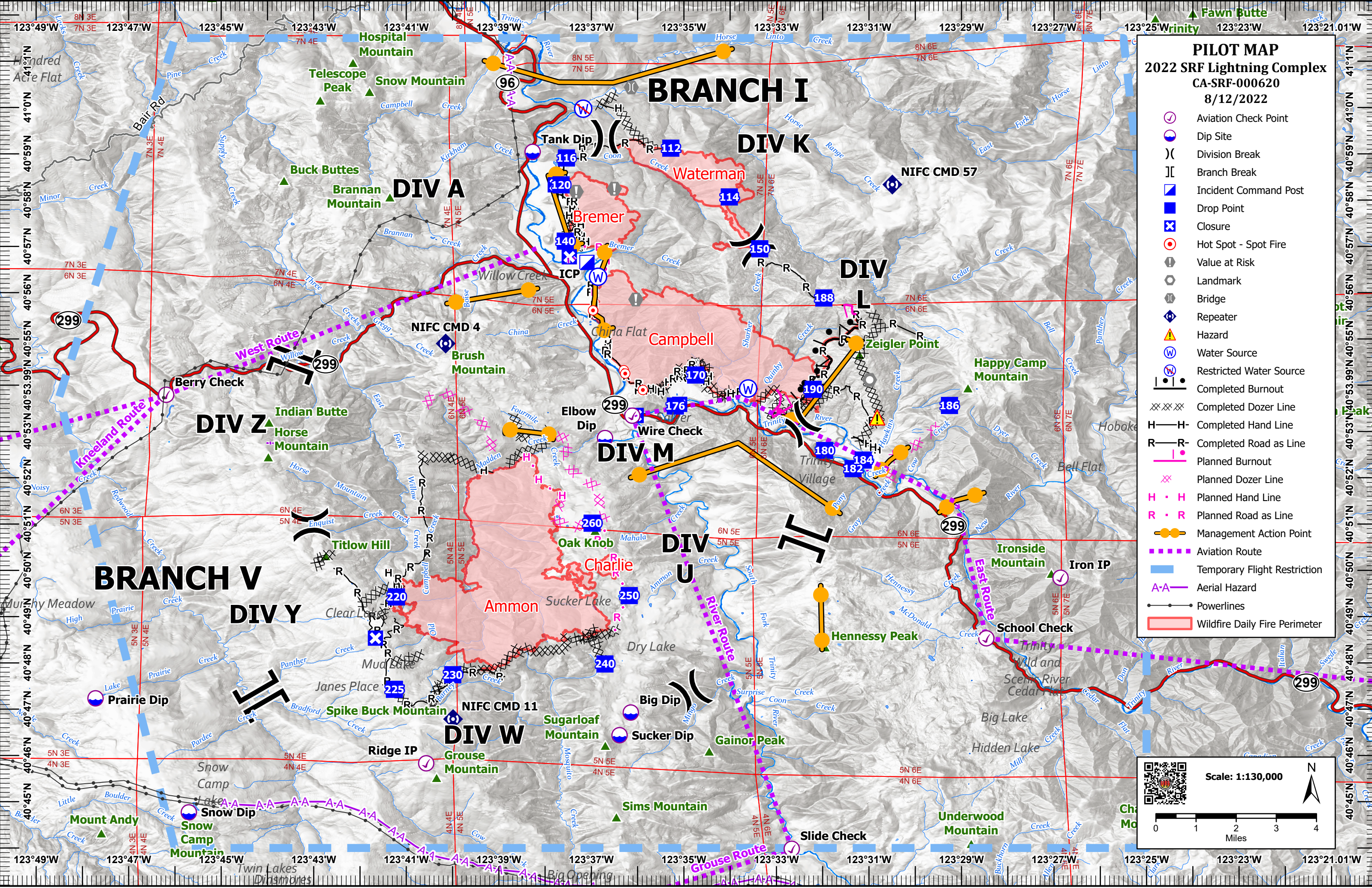


PILOT MAP
2022 SRF Lightning Complex
CA-SRF-000620
8/12/2022

- Aviation Check Point
- Dip Site
- Division Break
- Branch Break
- Incident Command Post
- Drop Point
- Closure
- Hot Spot - Spot Fire
- Value at Risk
- Landmark
- Bridge
- Repeater
- Hazard
- Water Source
- Restricted Water Source
- Completed Burnout
- Completed Dozer Line
- Completed Hand Line
- Completed Road as Line
- Planned Burnout
- Planned Dozer Line
- Planned Hand Line
- Planned Road as Line
- Management Action Point
- Aviation Route
- Temporary Flight Restriction
- Aerial Hazard
- Powerlines
- Wildfire Daily Fire Perimeter

Scale: 1:130,000

0 1 2 3 4 Miles



Point Type	Name	LAT WGS84	LONG WGS84
Aviation Check	Berry Check	40° 53.793' N	123° 46.190' W
Aviation Check	Grassy IP	40° 41.700' N	123° 45.200' W
Aviation Check	Iron IP	40° 49.840' N	123° 26.860' W
Aviation Check	Ridge IP	40° 45.830' N	123° 40.570' W
Aviation Check	School Check	40° 48.532' N	123° 28.464' W
Aviation Check	Slide Check	40° 43.983' N	123° 32.669' W
Aviation Check	Wire Check	40° 53.342' N	123° 36.115' W
Dip Site	Big Dip	40° 46.927' N	123° 36.148' W
Dip Site	Elbow Dip	40° 52.859' N	123° 36.705' W
Dip Site	Prairie Dip	40° 47.234' N	123° 47.717' W
Dip Site	Snow Dip	40° 44.770' N	123° 45.700' W
Dip Site	Sucker Dip	40° 46.437' N	123° 36.391' W
Dip Site	Tank Dip	40° 59.042' N	123° 38.269' W
Drop Point	112	40° 59.122' N	123° 35.283' W
Drop Point	114	40° 58.068' N	123° 34.019' W
Drop Point	116	40° 58.910' N	123° 37.539' W
Drop Point	120	40° 58.329' N	123° 37.655' W
Drop Point	140	40° 57.113' N	123° 37.565' W
Drop Point	150	40° 56.948' N	123° 33.361' W
Drop Point	170	40° 54.220' N	123° 34.745' W
Drop Point	176	40° 53.550' N	123° 35.185' W
Drop Point	180	40° 52.589' N	123° 31.957' W
Drop Point	182	40° 52.197' N	123° 31.344' W
Drop Point	184	40° 52.383' N	123° 31.124' W
Drop Point	186	40° 53.562' N	123° 29.260' W
Drop Point	188	40° 55.885' N	123° 31.977' W
Drop Point	190	40° 53.911' N	123° 32.207' W
Drop Point	220	40° 49.425' N	123° 41.213' W
Drop Point	225	40° 47.429' N	123° 41.256' W
Drop Point	230	40° 47.744' N	123° 39.996' W
Drop Point	240	40° 47.977' N	123° 36.706' W
Drop Point	250	40° 49.455' N	123° 36.181' W
Drop Point	260	40° 51.019' N	123° 36.983' W
Incident	ICP	40° 56.653' N	123° 37.095' W
Repeater	NIFC CMD 11	40° 46.786' N	123° 39.989' W
Repeater	NIFC CMD 4	40° 54.901' N	123° 40.149' W
Repeater	NIFC CMD 57	40° 58.336' N	123° 30.494' W