

IAP 2022 SRF Lightning Complex

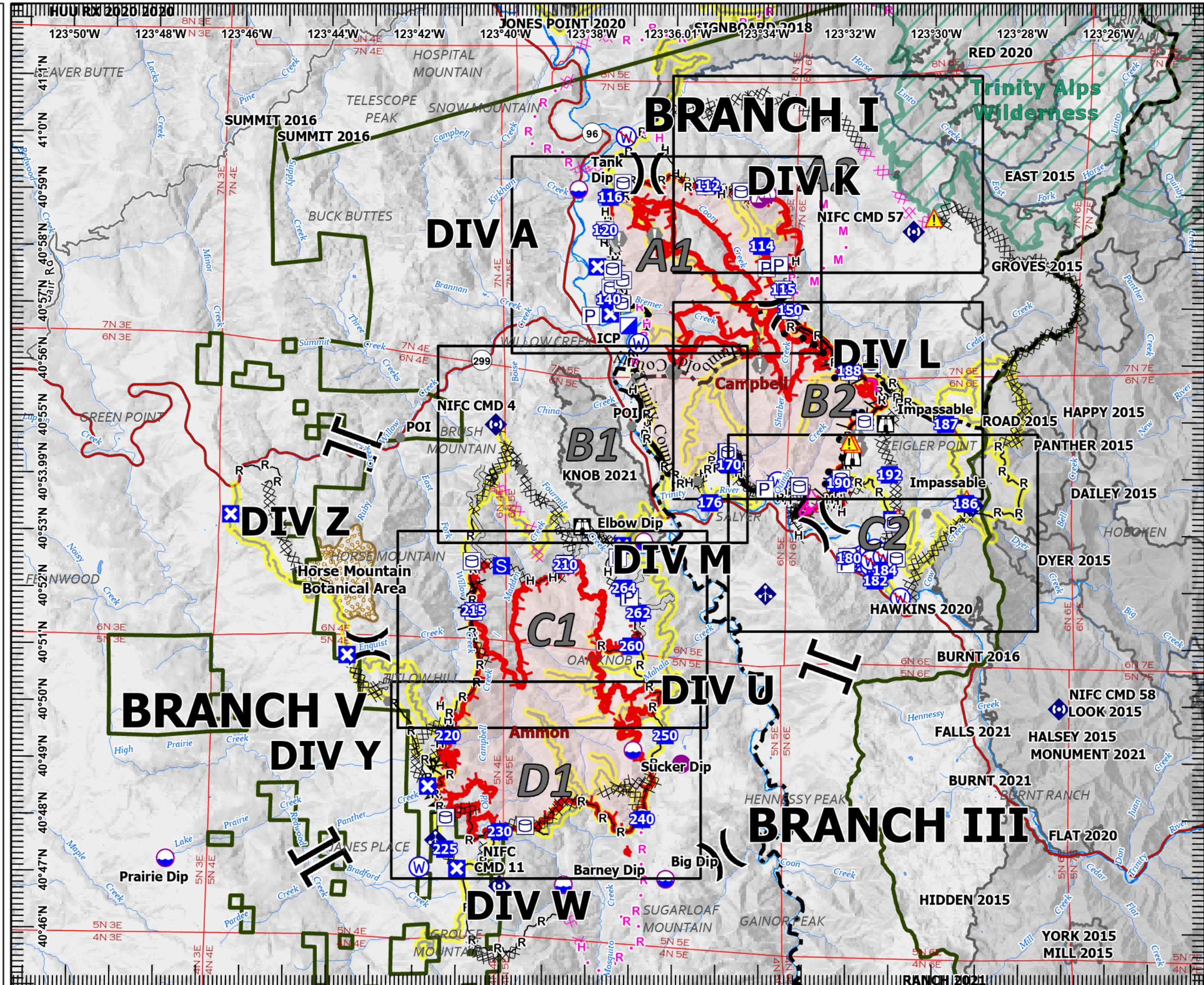
CA-SRF-000620
8/17/2022
Index

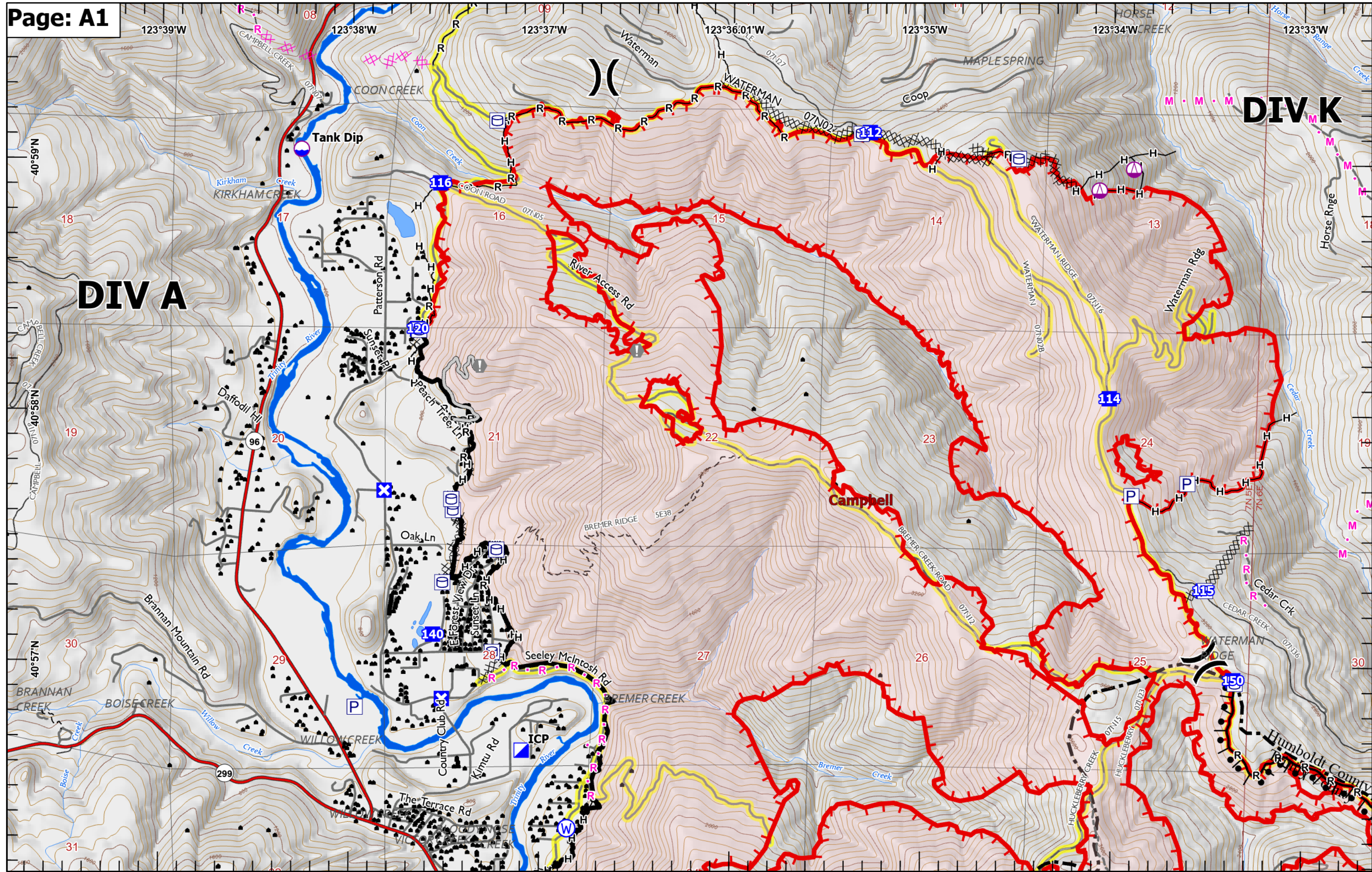
- | | | | |
|--|-------------------------|--|---------------------------------|
| | Other Property | | Completed Dozer Line |
| | Pump | | Completed Fuel Break |
| | Water Tank | | Completed Hand Line |
| | Dip Site | | Completed Road as Line |
| | Helispot | | Planned Burnout |
| | Sling Site | | Planned Dozer Line |
| | Division Break | | Planned Hand Line |
| | Branch Break | | Planned Mixed Construction Line |
| | Incident Command Post | | Planned Road as Line |
| | Drop Point | | Access or Improved Road |
| | Closure | | Other |
| | Staging Area | | Road Repair |
| | Lookout | | Contained |
| | Value at Risk | | Uncontained |
| | Other | | Other |
| | Landmark | | Prescribed Fire |
| | Mobile Weather Unit | | Wildfire Daily Fire Perimeter |
| | Repeater | | Transportation Highlights |
| | Hazard | | Fire History 2015 - 2021 |
| | Water Source | | Forest Administrative Boundary |
| | Restricted Water Source | | County Boundary |
| | Completed Burnout | | HorseMtnBotanicArea |

Miles
0 1 1/2 3

1:120,000

Last Updated
8/16/2022
23:18



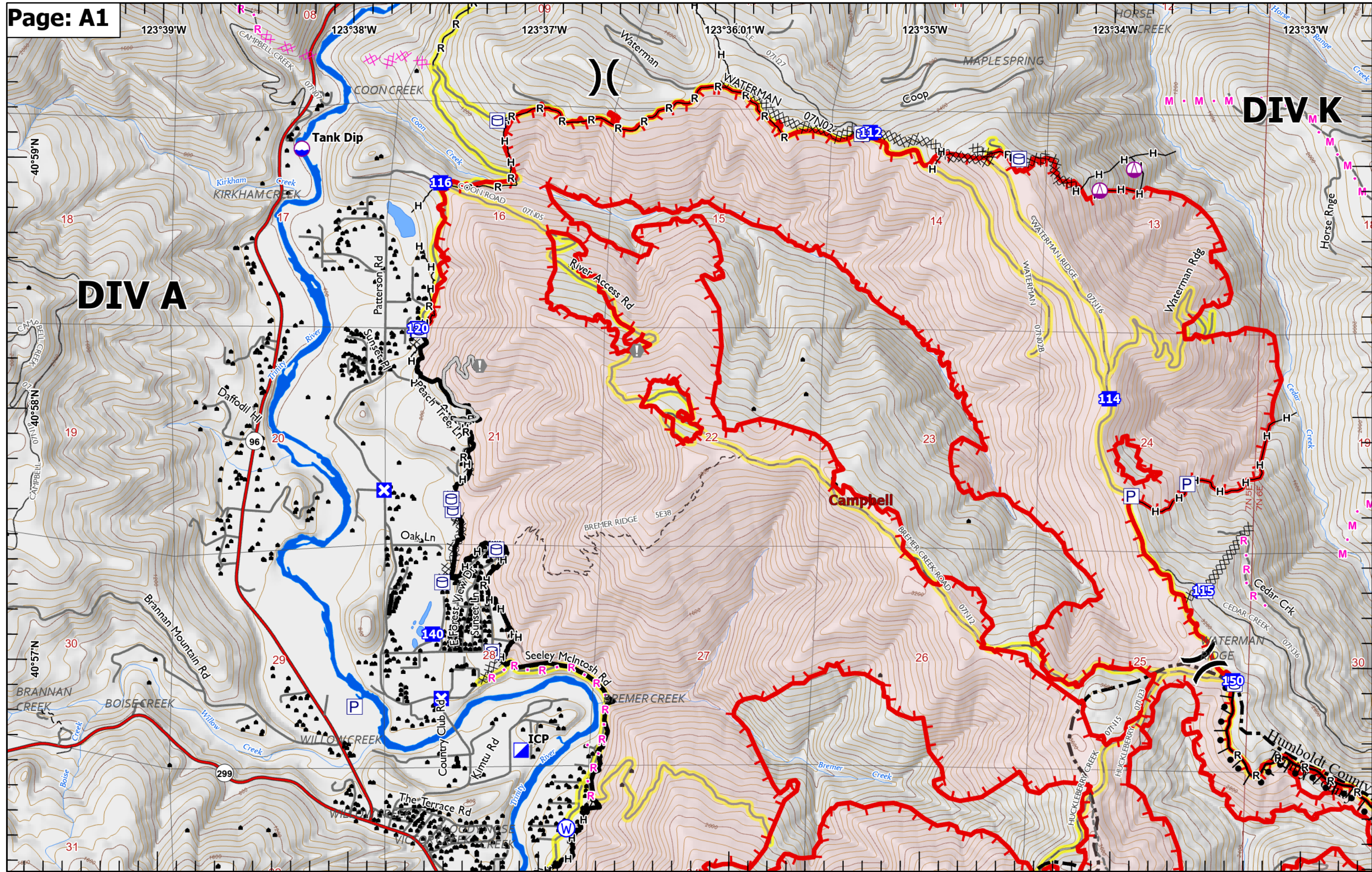


DIV A

DIV K

Campbell

Humboldt County

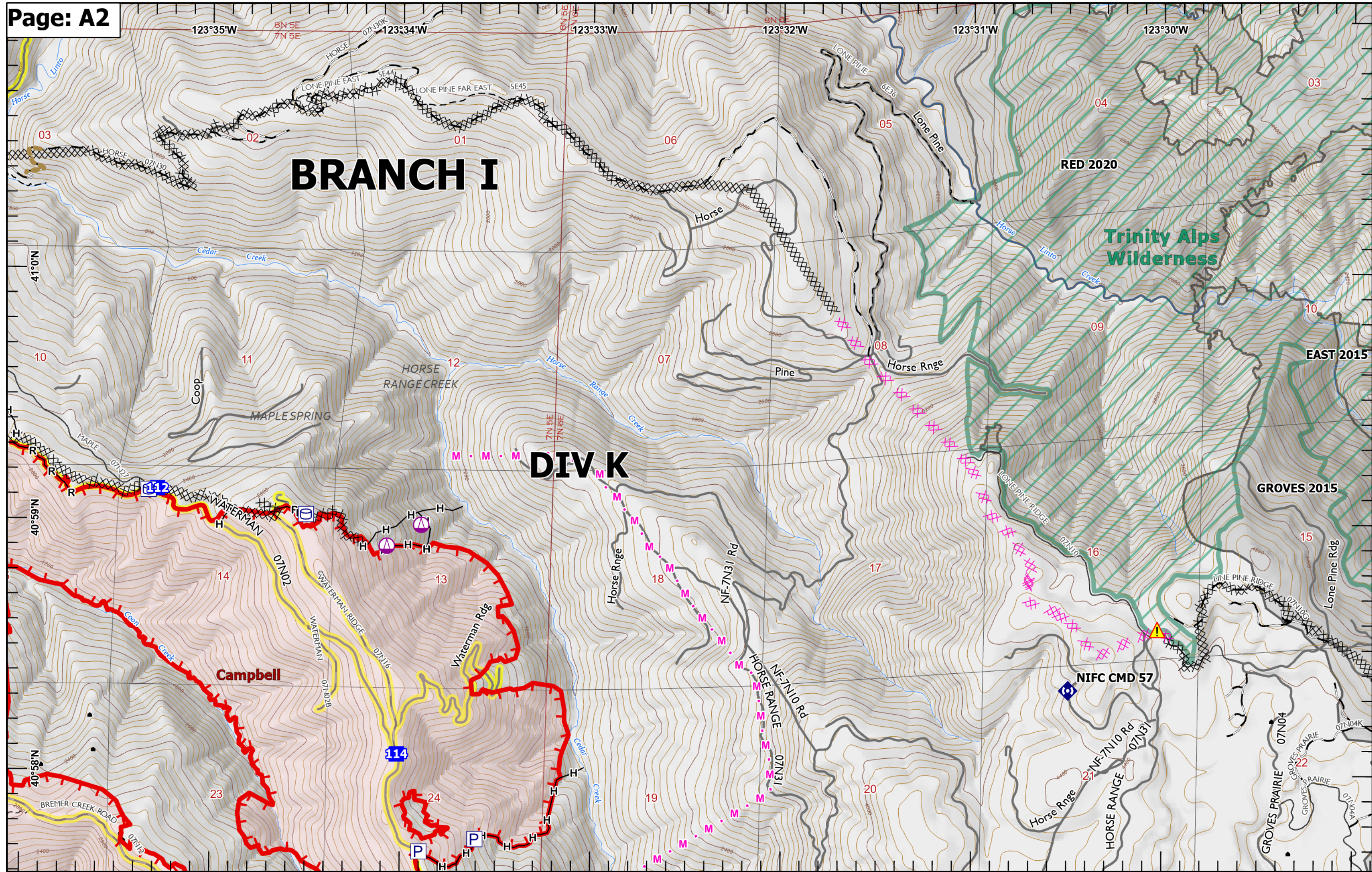


DIV A

DIV K

Campbell

Humboldt County



BRANCH I

DIV K

RED 2020

Trinity Alps
Wilderness

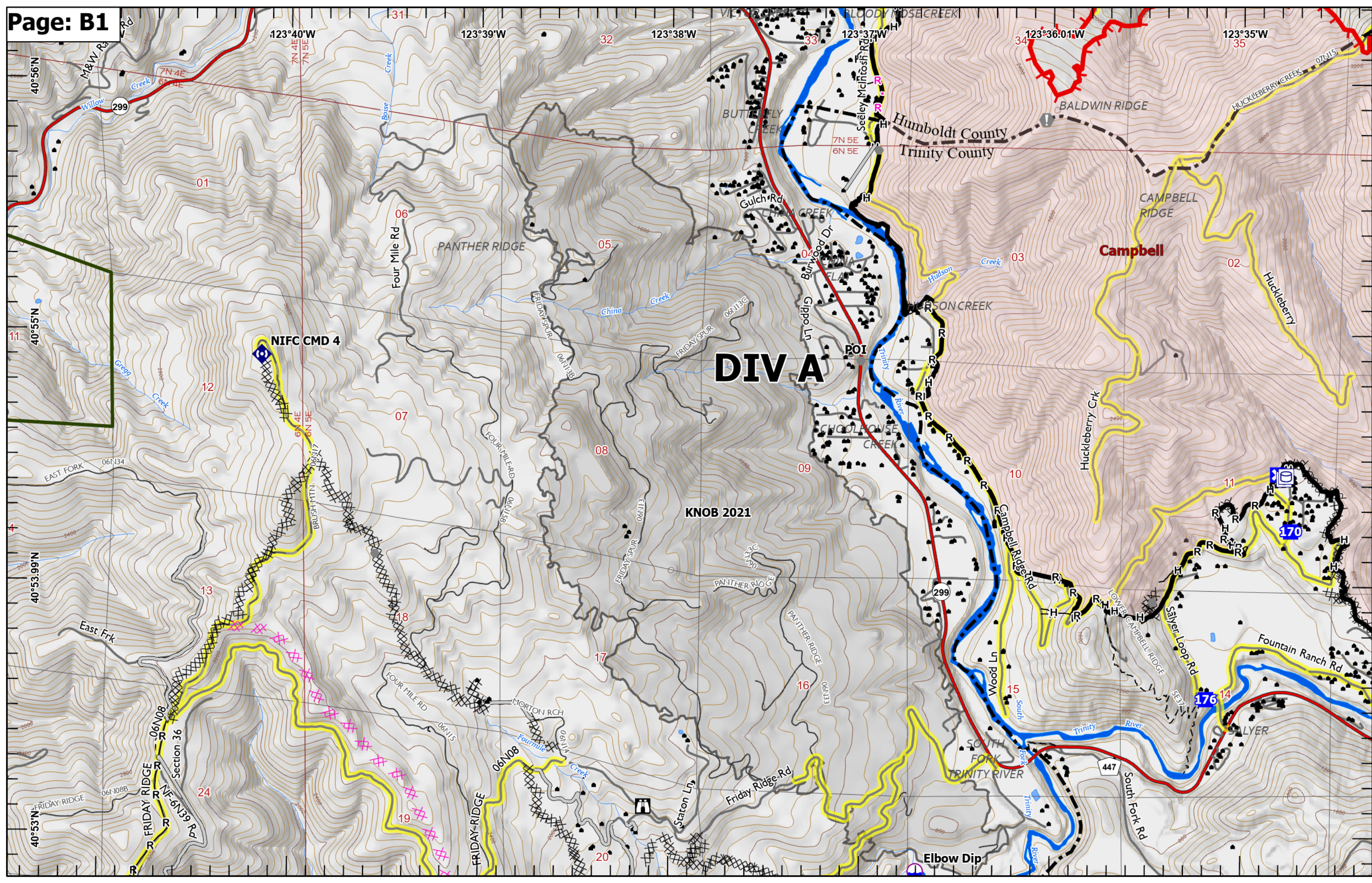
Campbell

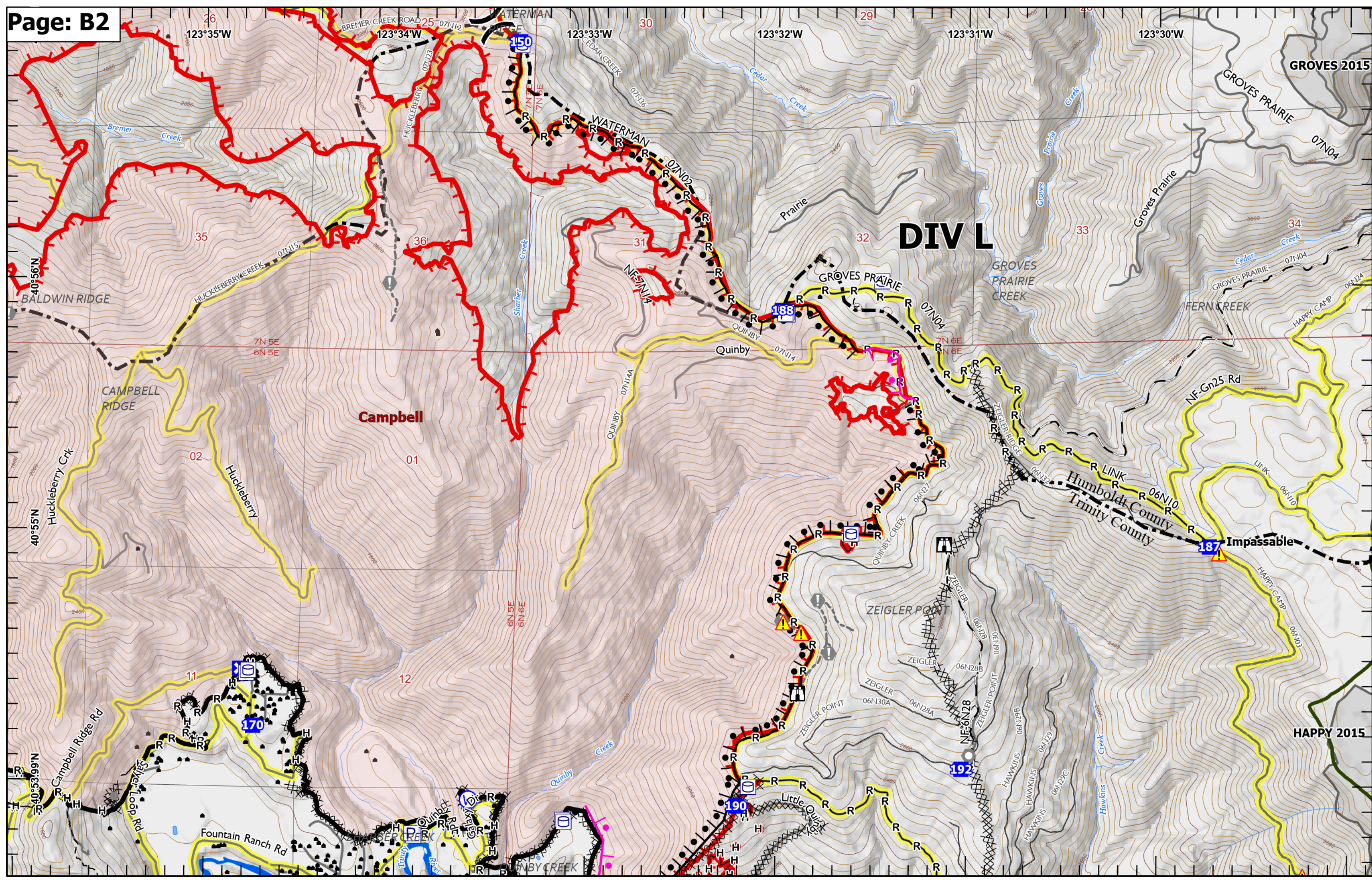
GROVES 2015

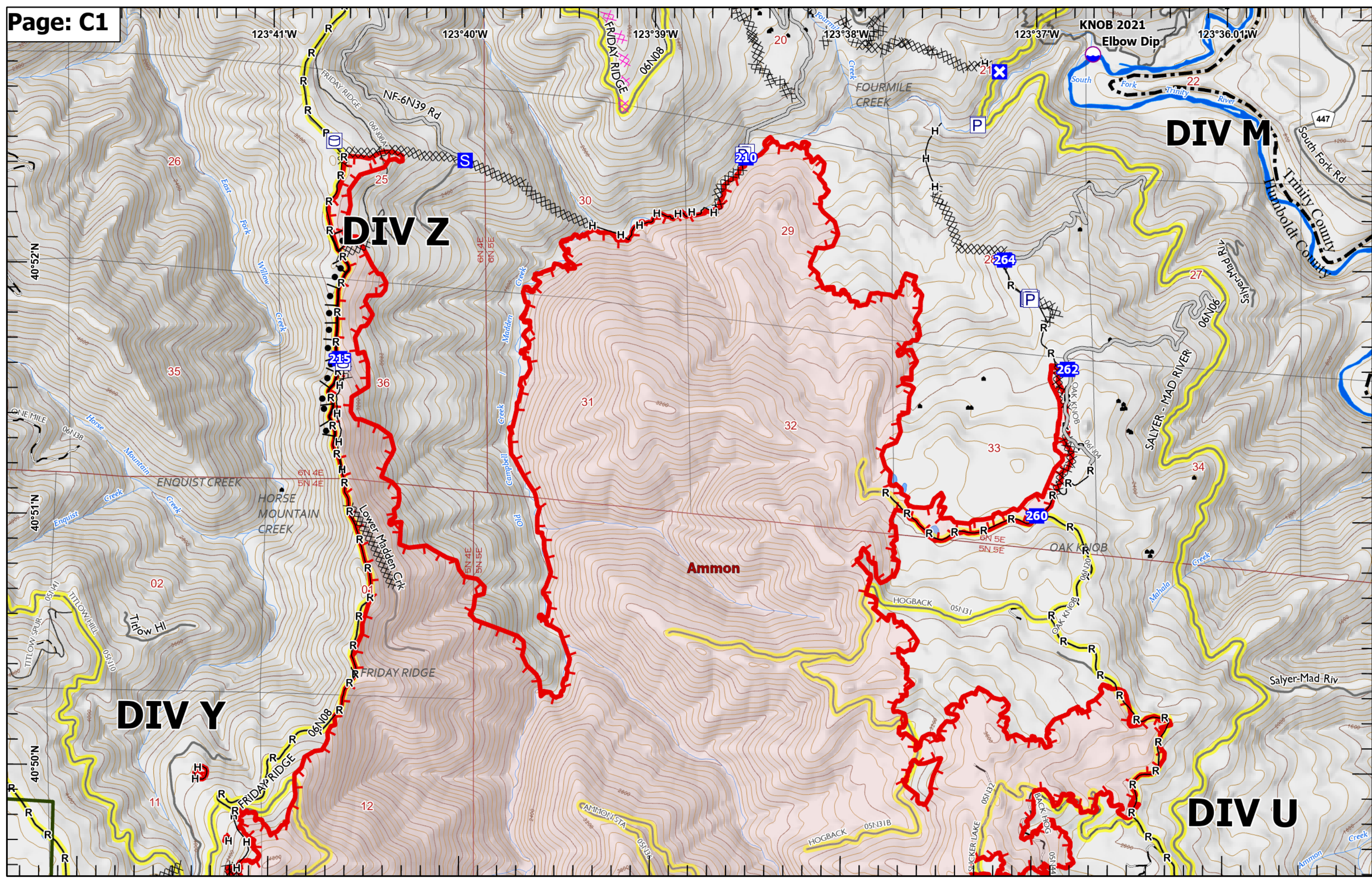
NIFC CMD 57

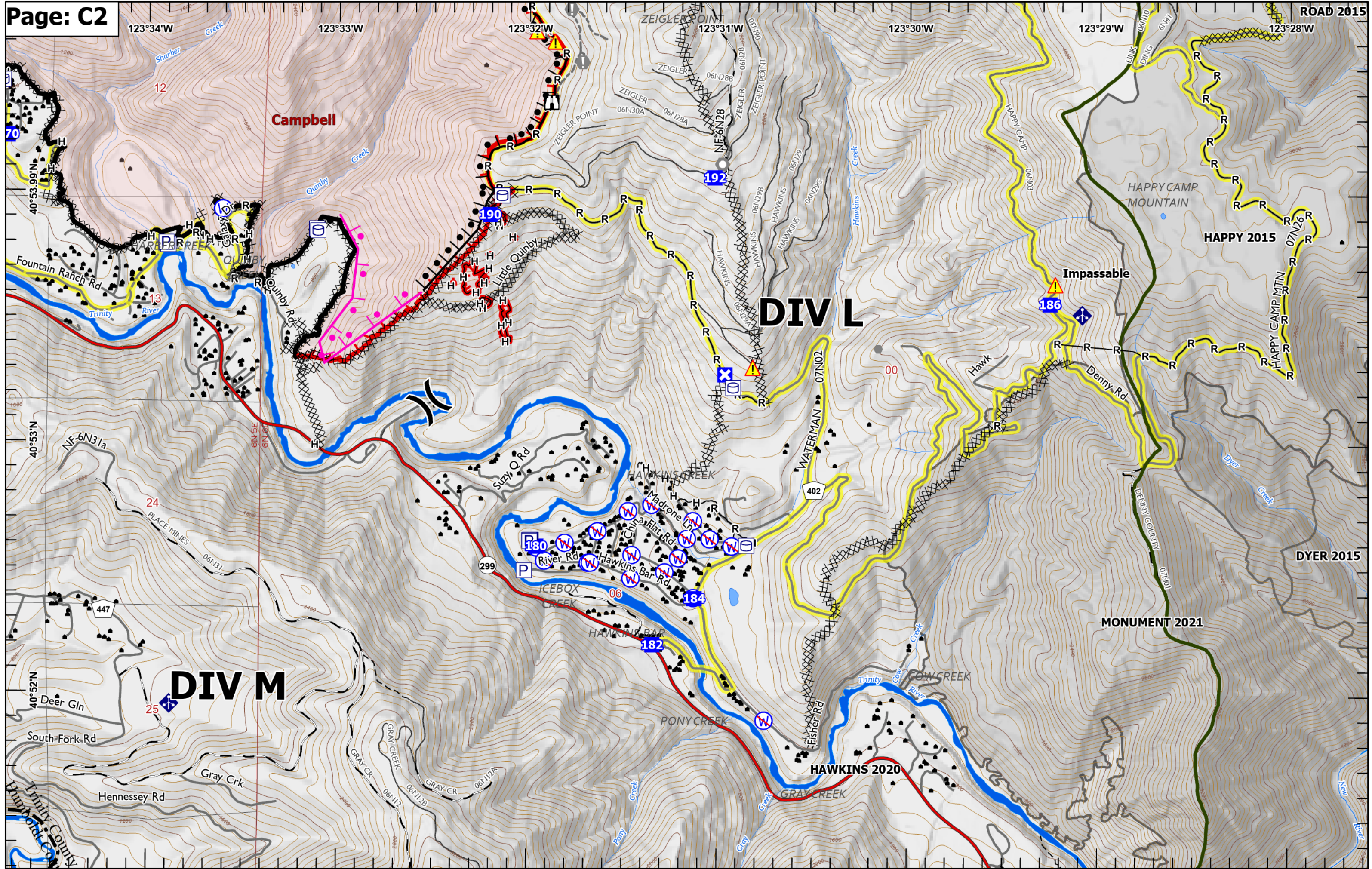
114

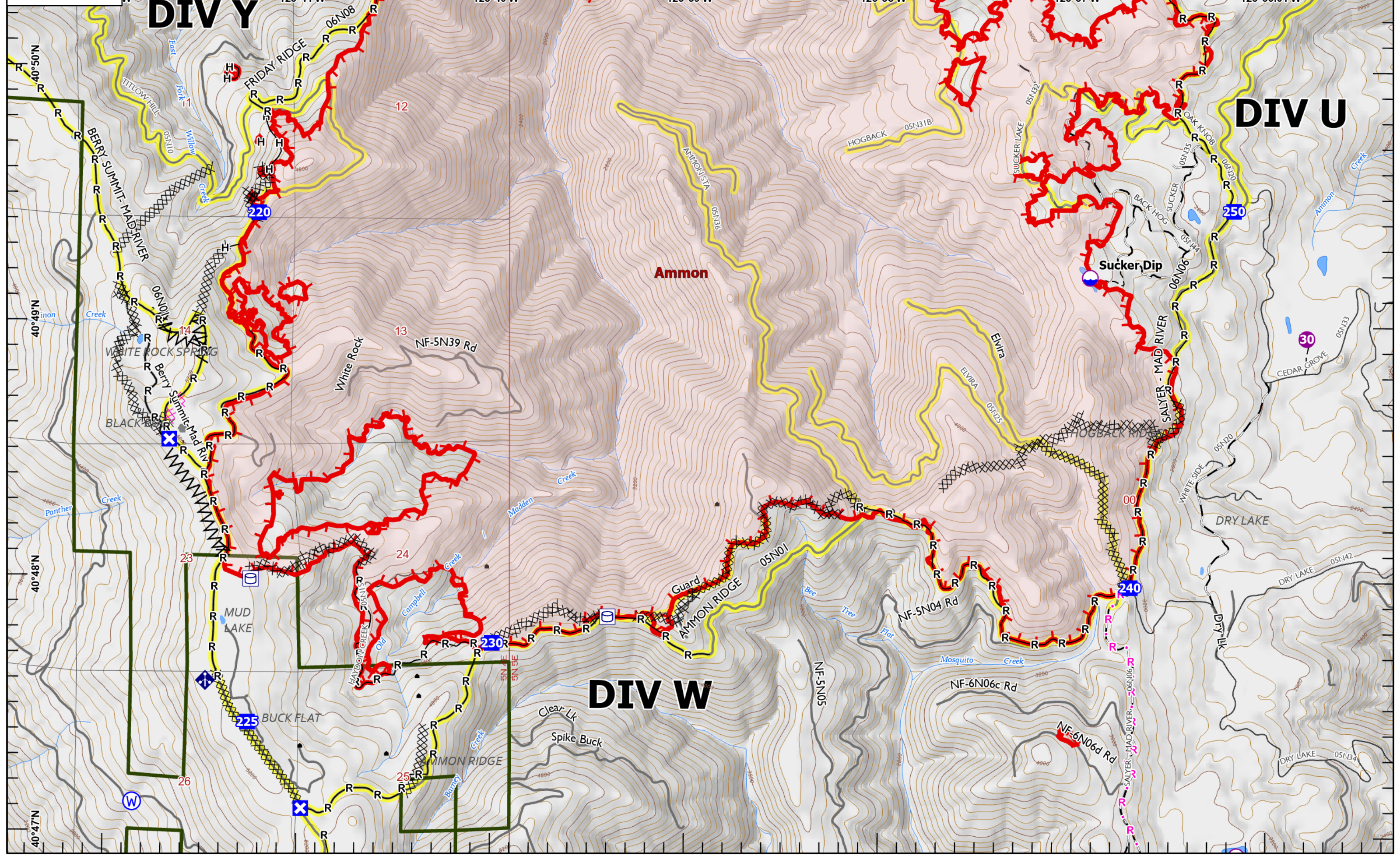
22











DIV Y

DIV U

DIV W

Ammon

Sucker Dip

23

24

25

26

220

250

230

240

225

30

Page: D1