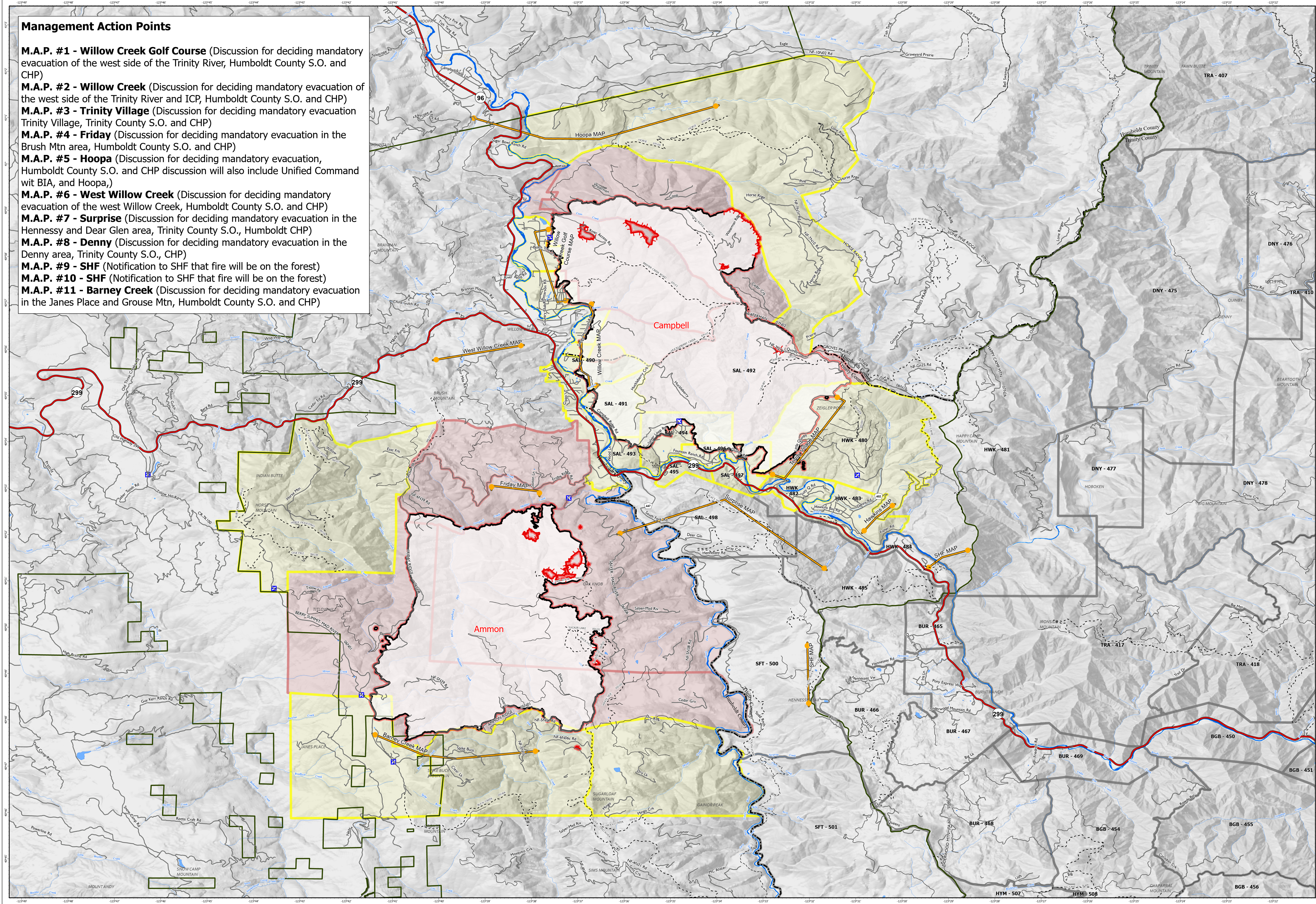


Management Action Points

- M.A.P. #1 - Willow Creek Golf Course** (Discussion for deciding mandatory evacuation of the west side of the Trinity River, Humboldt County S.O. and CHP)
- M.A.P. #2 - Willow Creek** (Discussion for deciding mandatory evacuation of the west side of the Trinity River and ICP, Humboldt County S.O. and CHP)
- M.A.P. #3 - Trinity Village** (Discussion for deciding mandatory evacuation Trinity Village, Trinity County S.O. and CHP)
- M.A.P. #4 - Friday** (Discussion for deciding mandatory evacuation in the Brush Mtn area, Humboldt County S.O. and CHP)
- M.A.P. #5 - Hoopa** (Discussion for deciding mandatory evacuation, Humboldt County S.O. and CHP discussion will also include Unified Command wit BIA, and Hoopa,)
- M.A.P. #6 - West Willow Creek** (Discussion for deciding mandatory evacuation of the west Willow Creek, Humboldt County S.O. and CHP)
- M.A.P. #7 - Surprise** (Discussion for deciding mandatory evacuation in the Hennessy and Dear Glen area, Trinity County S.O., Humboldt CHP)
- M.A.P. #8 - Denny** (Discussion for deciding mandatory evacuation in the Denny area, Trinity County S.O., CHP)
- M.A.P. #9 - SHF** (Notification to SHF that fire will be on the forest)
- M.A.P. #10 - SHF** (Notification to SHF that fire will be on the forest)
- M.A.P. #11 - Barney Creek** (Discussion for deciding mandatory evacuation in the Janes Place and Grouse Mtn, Humboldt County S.O. and CHP)



EVACUATION
 2022 SRF Lightning Complex
 CA-SRF-000620
 8/20/2022

Closure	Wildfire Daily Fire Perimeter	Highways	Lake / Pond
Management Action Point	CA Evacuation Status	Local Connectors	Lake / Pond (Intermittent)
Contained	Evacuation Order	Local Roads	Reservoir
Uncontained	Normal	Gravel Roads	Dam/Weir: Construction Material = Nonearth
		Dirt Roads	Waterfall
		Trails	Forest Administrative Boundary
			County Boundary

Map Updated: 8/19/2022 9:21 PM
 1:45,000