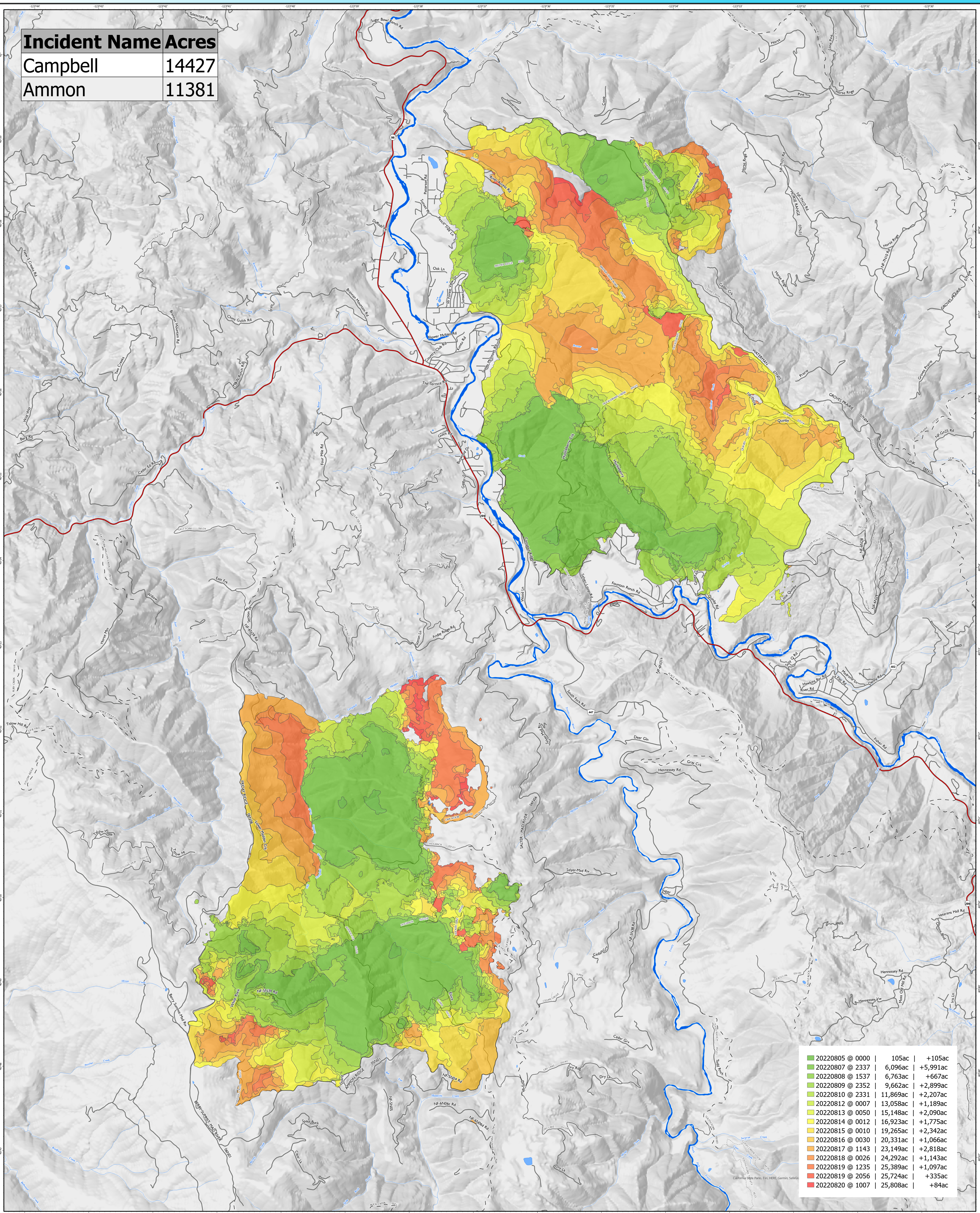


Incident Name	Acres
Campbell	14427
Ammon	11381



20220805 @ 0000	105ac	+105ac
20220807 @ 2337	6,096ac	+5,991ac
20220808 @ 1537	6,763ac	+667ac
20220809 @ 2352	9,662ac	+2,899ac
20220810 @ 2331	11,869ac	+2,207ac
20220812 @ 0007	13,058ac	+1,189ac
20220813 @ 0050	15,148ac	+2,090ac
20220814 @ 0012	16,923ac	+1,775ac
20220815 @ 0010	19,265ac	+2,342ac
20220816 @ 0030	20,331ac	+1,066ac
20220817 @ 1143	23,149ac	+2,818ac
20220818 @ 0026	24,292ac	+1,143ac
20220819 @ 1235	25,389ac	+1,097ac
20220819 @ 2056	25,724ac	+335ac
20220820 @ 1007	25,808ac	+84ac

- Highways
- Local Roads
- Gravel Roads
- Dirt Roads
- Trails
- Lake / Pond
- Lake / Pond (Intermittent)
- Stream / River
- Wash
- Stream/River

PROGRESSION OVERVIEW
 2022 SRF Lightning Complex
 CA-SRF-000620
 8/21/2022