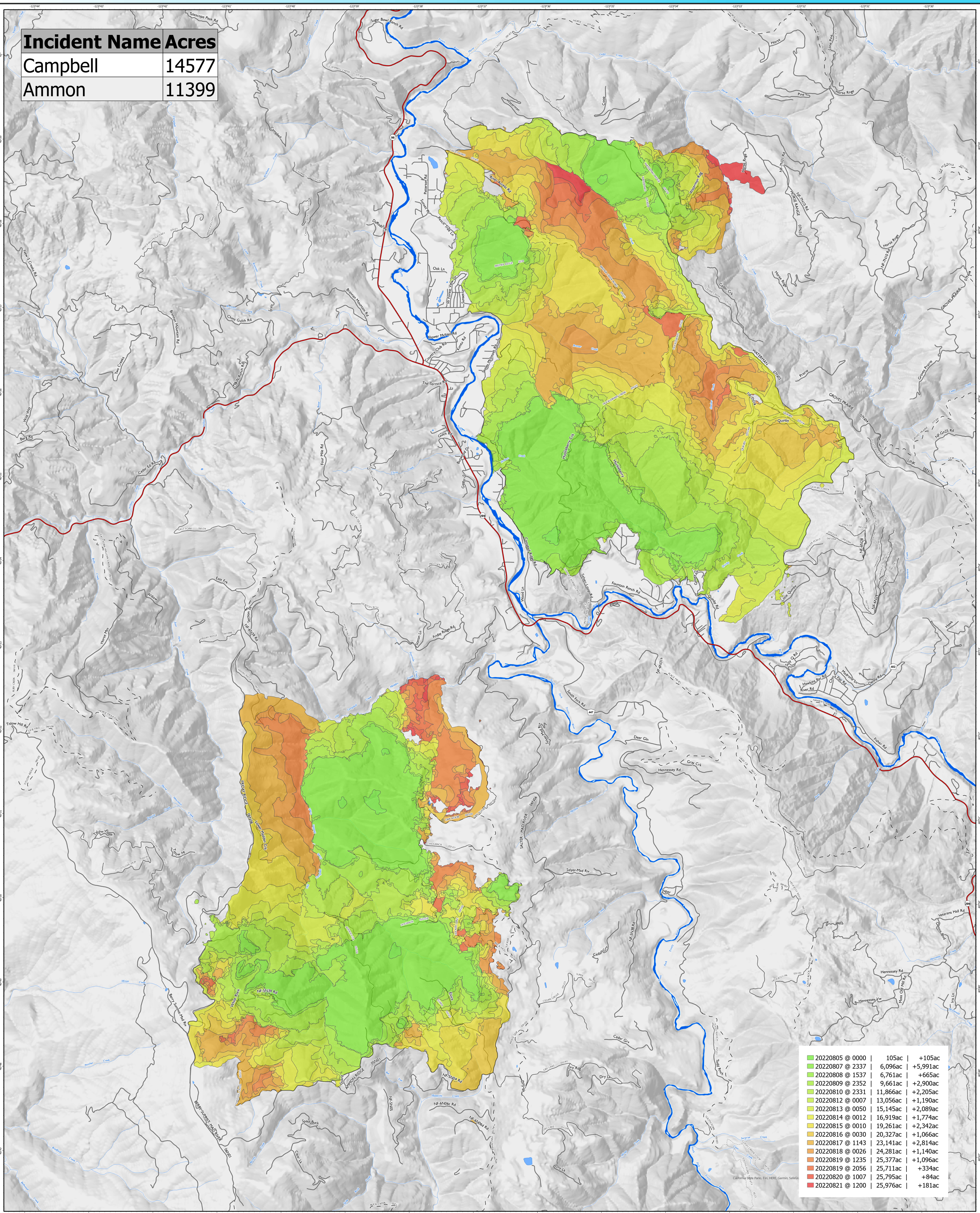


| Incident Name | Acres |
|---------------|-------|
| Campbell | 14577 |
| Ammon | 11399 |



| | | |
|-----------------|----------|----------|
| 20220805 @ 0000 | 105ac | +105ac |
| 20220807 @ 2337 | 6,096ac | +5,991ac |
| 20220808 @ 1537 | 6,761ac | +665ac |
| 20220809 @ 2352 | 9,661ac | +2,900ac |
| 20220810 @ 2331 | 11,866ac | +2,205ac |
| 20220812 @ 0007 | 13,056ac | +1,190ac |
| 20220813 @ 0050 | 15,145ac | +2,089ac |
| 20220814 @ 0012 | 16,919ac | +1,774ac |
| 20220815 @ 0010 | 19,261ac | +2,342ac |
| 20220816 @ 0030 | 20,327ac | +1,066ac |
| 20220817 @ 1143 | 23,141ac | +2,814ac |
| 20220818 @ 0026 | 24,281ac | +1,140ac |
| 20220819 @ 1235 | 25,377ac | +1,096ac |
| 20220819 @ 2056 | 25,711ac | +334ac |
| 20220820 @ 1007 | 25,795ac | +84ac |
| 20220821 @ 1200 | 25,976ac | +181ac |

- Highways
- Local Roads
- Gravel Roads
- Dirt Roads
- Trails
- Lake / Pond
- Lake / Pond (Intermittent)
- Stream / River
- Wash
- Stream/River

PROGRESSION OVERVIEW
 2022 SRF Lightning Complex
 CA-SRF-000620
 8/22/2022