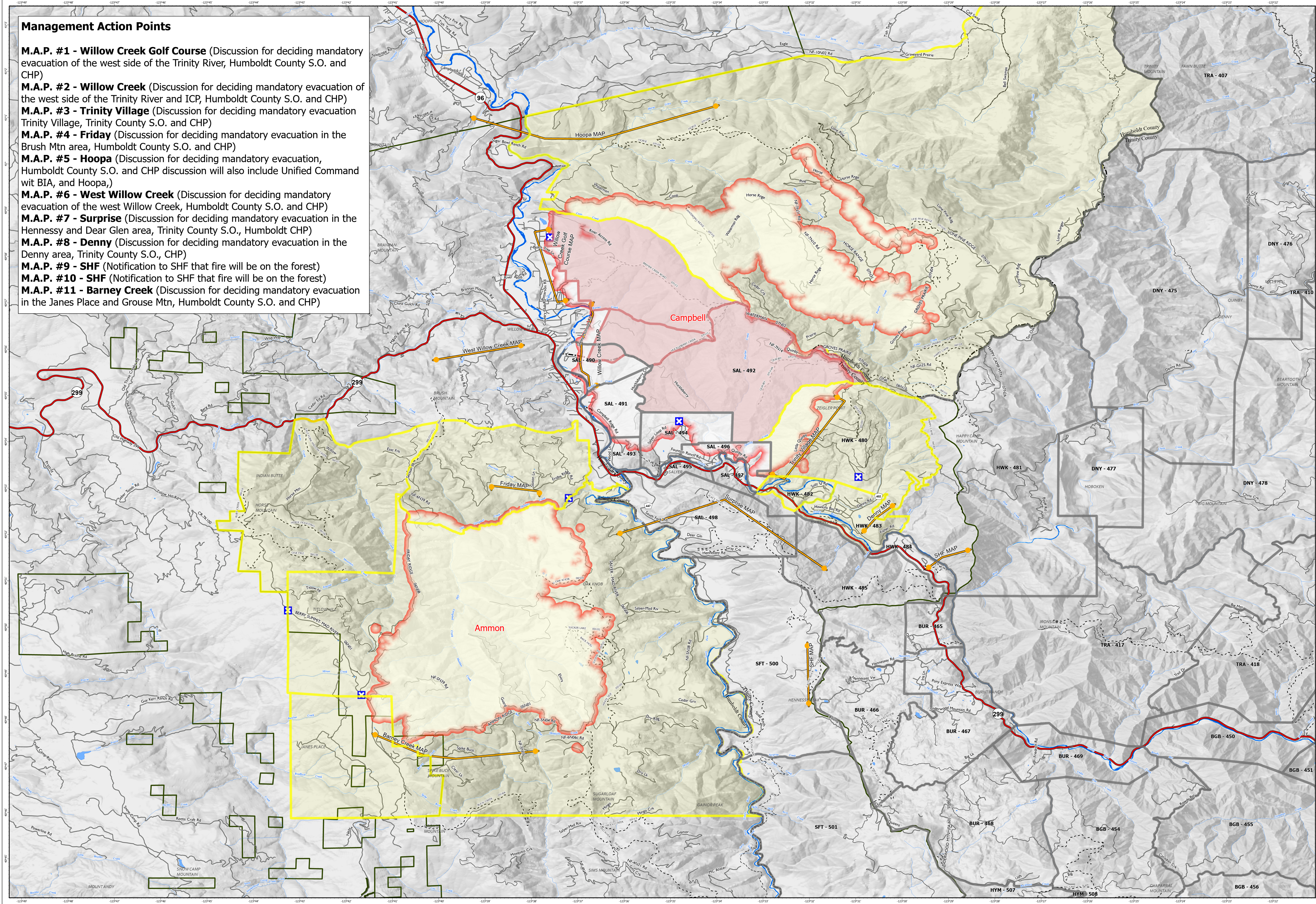


Management Action Points

- M.A.P. #1 - Willow Creek Golf Course** (Discussion for deciding mandatory evacuation of the west side of the Trinity River, Humboldt County S.O. and CHP)
- M.A.P. #2 - Willow Creek** (Discussion for deciding mandatory evacuation of the west side of the Trinity River and ICP, Humboldt County S.O. and CHP)
- M.A.P. #3 - Trinity Village** (Discussion for deciding mandatory evacuation Trinity Village, Trinity County S.O. and CHP)
- M.A.P. #4 - Friday** (Discussion for deciding mandatory evacuation in the Brush Mtn area, Humboldt County S.O. and CHP)
- M.A.P. #5 - Hoopa** (Discussion for deciding mandatory evacuation, Humboldt County S.O. and CHP discussion will also include Unified Command wit BIA, and Hoopa,)
- M.A.P. #6 - West Willow Creek** (Discussion for deciding mandatory evacuation of the west Willow Creek, Humboldt County S.O. and CHP)
- M.A.P. #7 - Surprise** (Discussion for deciding mandatory evacuation in the Hennessy and Dear Glen area, Trinity County S.O., Humboldt CHP)
- M.A.P. #8 - Denny** (Discussion for deciding mandatory evacuation in the Denny area, Trinity County S.O., CHP)
- M.A.P. #9 - SHF** (Notification to SHF that fire will be on the forest)
- M.A.P. #10 - SHF** (Notification to SHF that fire will be on the forest)
- M.A.P. #11 - Barney Creek** (Discussion for deciding mandatory evacuation in the Janes Place and Grouse Mtn, Humboldt County S.O. and CHP)



	Closure		Wildfire Daily Fire Perimeter		Normal		Gravel Roads
	Warning		Evacuation Order		Highways		Dirt Roads
	Management Action Point		CA Evacuation Status		Local Connectors		Trails
	Warning		Evacuation Order		Local Roads		County Boundary

EVACUATION
 2022 SRF Lightning Complex
 CA-SRF-000620
 8/27/2022

