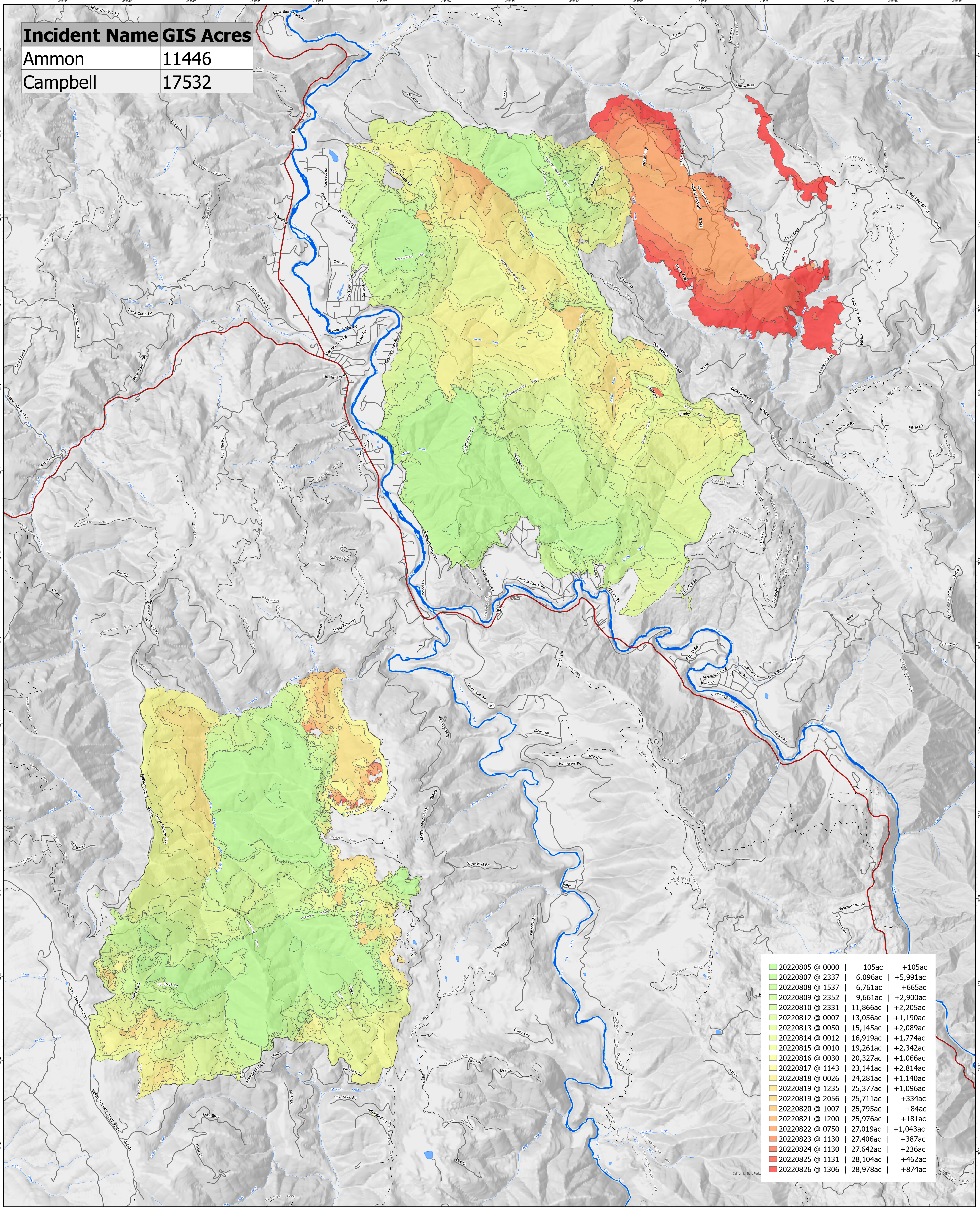


Incident Name	GIS Acres
Ammon	11446
Campbell	17532



20220805 @ 0000	105ac	+105ac
20220807 @ 2337	6,096ac	+5,991ac
20220808 @ 1537	6,761ac	+665ac
20220809 @ 2352	9,661ac	+2,900ac
20220810 @ 2331	11,866ac	+2,205ac
20220812 @ 0007	13,056ac	+1,190ac
20220813 @ 0050	15,145ac	+2,089ac
20220814 @ 0012	16,919ac	+1,774ac
20220815 @ 0010	19,261ac	+2,342ac
20220816 @ 0030	20,327ac	+1,066ac
20220817 @ 1143	23,141ac	+2,814ac
20220818 @ 0026	24,281ac	+1,140ac
20220819 @ 1235	25,377ac	+1,096ac
20220819 @ 2056	25,711ac	+334ac
20220820 @ 1007	25,795ac	+84ac
20220821 @ 1200	25,976ac	+181ac
20220822 @ 0750	27,019ac	+1,043ac
20220823 @ 1130	27,406ac	+387ac
20220824 @ 1130	27,642ac	+236ac
20220825 @ 1131	28,104ac	+462ac
20220826 @ 1306	28,978ac	+874ac

- Highways
- Local Roads
- Gravel Roads
- Dirt Roads
- Trails
- Wash
- Lake / Pond
- Lake / Pond (Intermittent)
- Stream / River
- Waterfall
- Stream / River
- Canal/Ditch

PROGRESSION OVERVIEW
 2022 SRF Lightning Complex
 CA-SRF-000620
 8/27/2022