




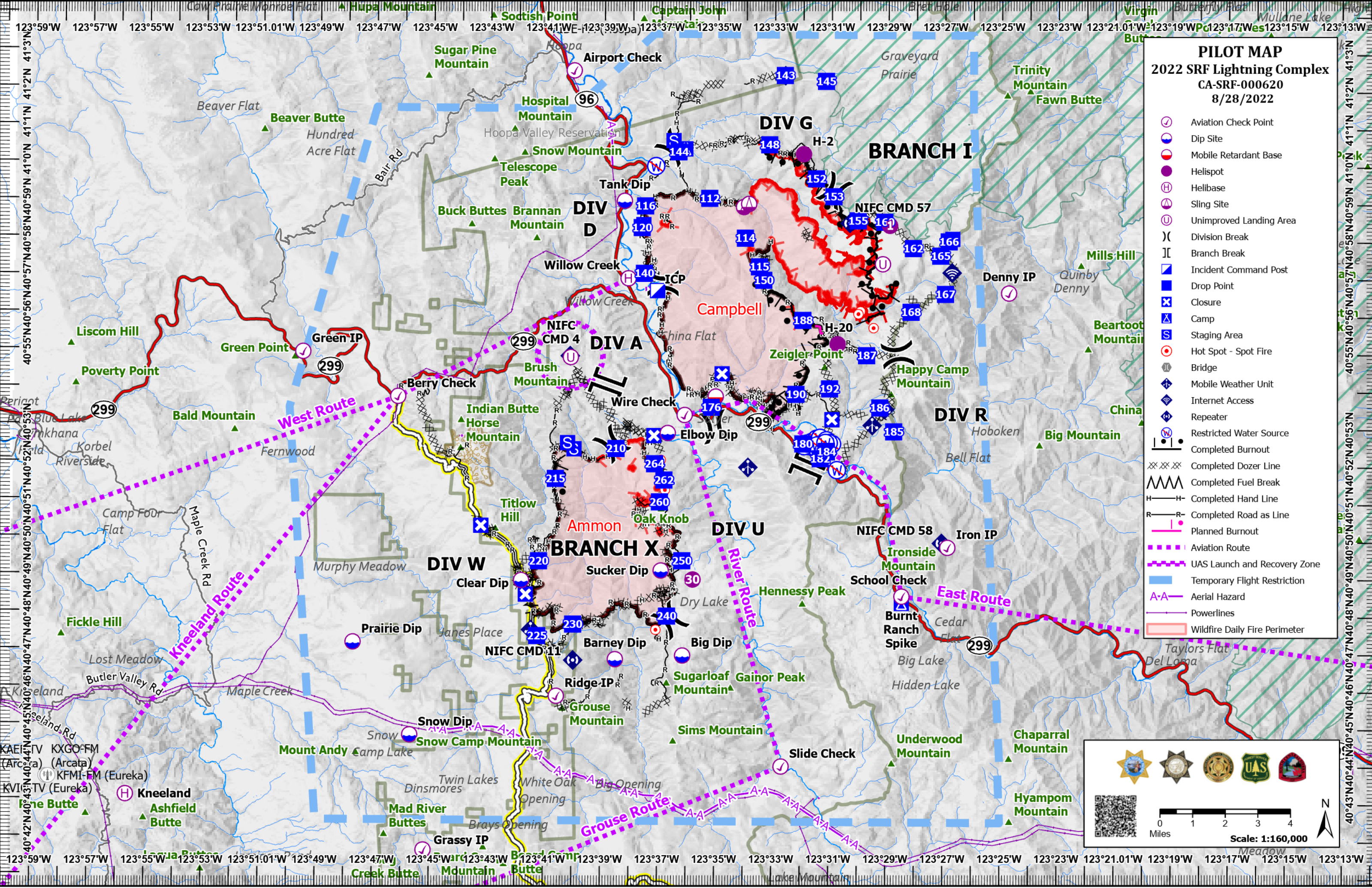
PILOT MAP
2022 SRF Lightning Complex
CA-SRF-000620
8/28/2022

- Aviation Check Point
- Dip Site
- Mobile Retardant Base
- Helispot
- Helibase
- Sling Site
- Unimproved Landing Area
- Division Break
- Branch Break
- Incident Command Post
- Drop Point
- Closure
- Camp
- Staging Area
- Hot Spot - Spot Fire
- Bridge
- Mobile Weather Unit
- Internet Access
- Repeater
- Restricted Water Source
- Completed Burnout
- Completed Dozer Line
- Completed Fuel Break
- Completed Hand Line
- Completed Road as Line
- Planned Burnout
- Aviation Route
- UAS Launch and Recovery Zone
- Temporary Flight Restriction
- Aerial Hazard
- Powerlines
- Wildfire Daily Fire Perimeter



Scale: 1:160,000

Miles 0 1 2 3 4

Point Type	Name	LAT WGS84	LONG WGS84	Point Type	Name	LAT WGS84	LONG WGS84
Aviation Check	Airport Check	41° 02.510' N	123° 40.071' W	Drop Point	166	40° 58.001' N	123° 26.847' W
Aviation Check	Berry Check	40° 53.793' N	123° 46.190' W	Drop Point	167	40° 56.598' N	123° 26.969' W
Aviation Check	Denny IP	40° 56.630' N	123° 24.731' W	Drop Point	168	40° 56.118' N	123° 28.177' W
Aviation Check	Grassy IP	40° 41.700' N	123° 45.200' W	Drop Point	176	40° 53.550' N	123° 35.185' W
Aviation Check	Green IP	40° 54.970' N	123° 49.541' W	Drop Point	180	40° 52.589' N	123° 31.957' W
Aviation Check	Iron IP	40° 49.840' N	123° 26.860' W	Drop Point	182	40° 52.197' N	123° 31.344' W
Aviation Check	Ridge IP	40° 45.830' N	123° 40.570' W	Drop Point	184	40° 52.383' N	123° 31.124' W
Aviation Check	School Check	40° 48.532' N	123° 28.464' W	Drop Point	185	40° 52.927' N	123° 28.765' W
Aviation Check	Slide Check	40° 43.983' N	123° 32.669' W	Drop Point	186	40° 53.562' N	123° 29.260' W
Aviation Check	Wire Check	40° 53.342' N	123° 36.115' W	Drop Point	187	40° 54.953' N	123° 29.730' W
Camp		41° 00.438' N	123° 36.137' W	Drop Point	188	40° 55.885' N	123° 31.977' W
Camp	Burnt Ranch	40° 48.351' N	123° 28.465' W	Drop Point	190	40° 53.911' N	123° 32.207' W
Dip Site	Barney Dip	40° 46.817' N	123° 38.508' W	Drop Point	192	40° 54.062' N	123° 31.027' W
Dip Site	Big Dip	40° 46.927' N	123° 36.148' W	Drop Point	210	40° 52.437' N	123° 38.521' W
Dip Site	Clear Dip	40° 48.910' N	123° 41.821' W	Drop Point	215	40° 51.625' N	123° 40.644' W
Dip Site	Elbow Dip	40° 52.859' N	123° 36.705' W	Drop Point	220	40° 49.425' N	123° 41.213' W
Dip Site	Prairie Dip	40° 47.234' N	123° 47.717' W	Drop Point	225	40° 47.429' N	123° 41.256' W
Dip Site	Snow Dip	40° 44.770' N	123° 45.700' W	Drop Point	230	40° 47.744' N	123° 39.996' W
Dip Site	Sucker Dip	40° 49.190' N	123° 36.921' W	Drop Point	240	40° 47.977' N	123° 36.706' W
Dip Site	Tank Dip	40° 59.042' N	123° 38.269' W	Drop Point	250	40° 49.455' N	123° 36.181' W
Drop Point		40° 52.398' N	123° 31.123' W	Drop Point	260	40° 51.019' N	123° 36.983' W
Drop Point	112	40° 59.122' N	123° 35.283' W	Drop Point	262	40° 51.603' N	123° 36.827' W
Drop Point	114	40° 58.068' N	123° 34.019' W	Drop Point	264	40° 52.037' N	123° 37.161' W
Drop Point	115	40° 57.305' N	123° 33.519' W	Helibase	Kneeland	40° 43.128' N	123° 55.652' W
Drop Point	116	40° 58.910' N	123° 37.539' W	Helibase	Willow Creek	40° 56.977' N	123° 38.121' W
Drop Point	120	40° 58.329' N	123° 37.655' W	Helispot	1	40° 58.420' N	123° 28.931' W
Drop Point	140	40° 57.113' N	123° 37.565' W	Helispot	30	40° 48.956' N	123° 35.800' W
Drop Point	143	41° 02.413' N	123° 32.649' W	Helispot	H-2	41° 00.317' N	123° 31.978' W
Drop Point	144	41° 00.357' N	123° 36.380' W	Helispot	H-20	40° 55.252' N	123° 30.753' W
Drop Point	145	41° 02.263' N	123° 31.197' W	Incident	ICP	40° 56.653' N	123° 37.095' W
Drop Point	148	41° 00.563' N	123° 33.185' W	Repeater	NIFC CMD 11	40° 46.786' N	123° 39.989' W
Drop Point	150	40° 56.948' N	123° 33.361' W	Repeater	NIFC CMD 4	40° 54.901' N	123° 40.149' W
Drop Point	152	40° 59.660' N	123° 31.531' W	Repeater	NIFC CMD 57	40° 58.479' N	123° 30.341' W
Drop Point	153	40° 59.189' N	123° 30.911' W	Repeater	NIFC CMD 58	40° 49.956' N	123° 27.070' W
Drop Point	155	40° 58.547' N	123° 30.054' W	Sling Site		40° 58.897' N	123° 34.076' W
Drop Point	160	40° 58.516' N	123° 29.117' W	Sling Site		40° 58.981' N	123° 33.896' W
Drop Point	162	40° 57.815' N	123° 28.108' W	Unimproved		40° 54.865' N	123° 40.131' W
Drop Point	165	40° 57.620' N	123° 27.142' W	Unimproved		40° 57.393' N	123° 29.175' W