

IAP 2022 SRF Lightning Complex

CA-SRF-000620
9/01/2022

Index

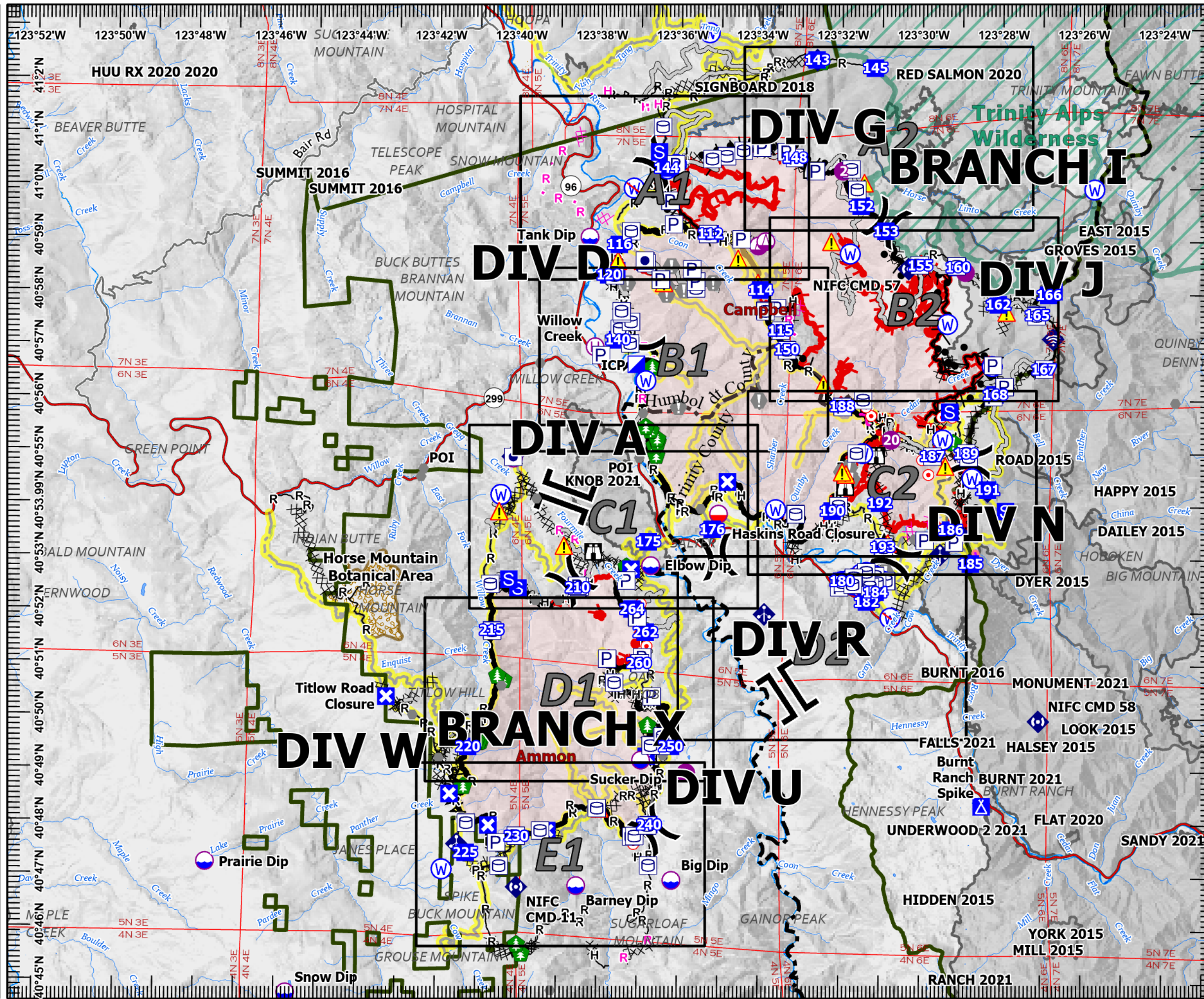
- | | | | |
|--|-------------------------|--|--------------------------------|
| | Other Property | | Water Source |
| | Pump | | Restricted Water Source |
| | Water Tank | | Completed Burnout |
| | Dip Site | | Completed Dozer Line |
| | Mobile Retardant Base | | Completed Fuel Break |
| | Helispot | | Completed Hand Line |
| | Helibase | | Completed Road as Line |
| | Sling Site | | Planned Burnout |
| | Unimproved Landing Area | | Planned Dozer Line |
| | Division Break | | Planned Hand Line |
| | Branch Break | | Planned Road as Line |
| | Incident Command Post | | Access or Improved Road |
| | Drop Point | | Other |
| | Closure | | Repair Line |
| | Camp | | Road Repair |
| | Staging Area | | Retardant Drop |
| | Lookout | | Contained |
| | Hot Spot - Spot Fire | | Uncontained |
| | Value at Risk | | Other |
| | Other | | Prescribed Fire |
| | Landmark | | Wildfire Daily Fire Perimeter |
| | Resource Location | | Transportation Highlights |
| | Hazard Tree | | Fire History 2015 - 2021 |
| | Mobile Weather Unit | | Forest Administrative Boundary |
| | Internet Access | | County Boundary |
| | Repeater | | HorseMtnBotanicArea |
| | Hazard | | |

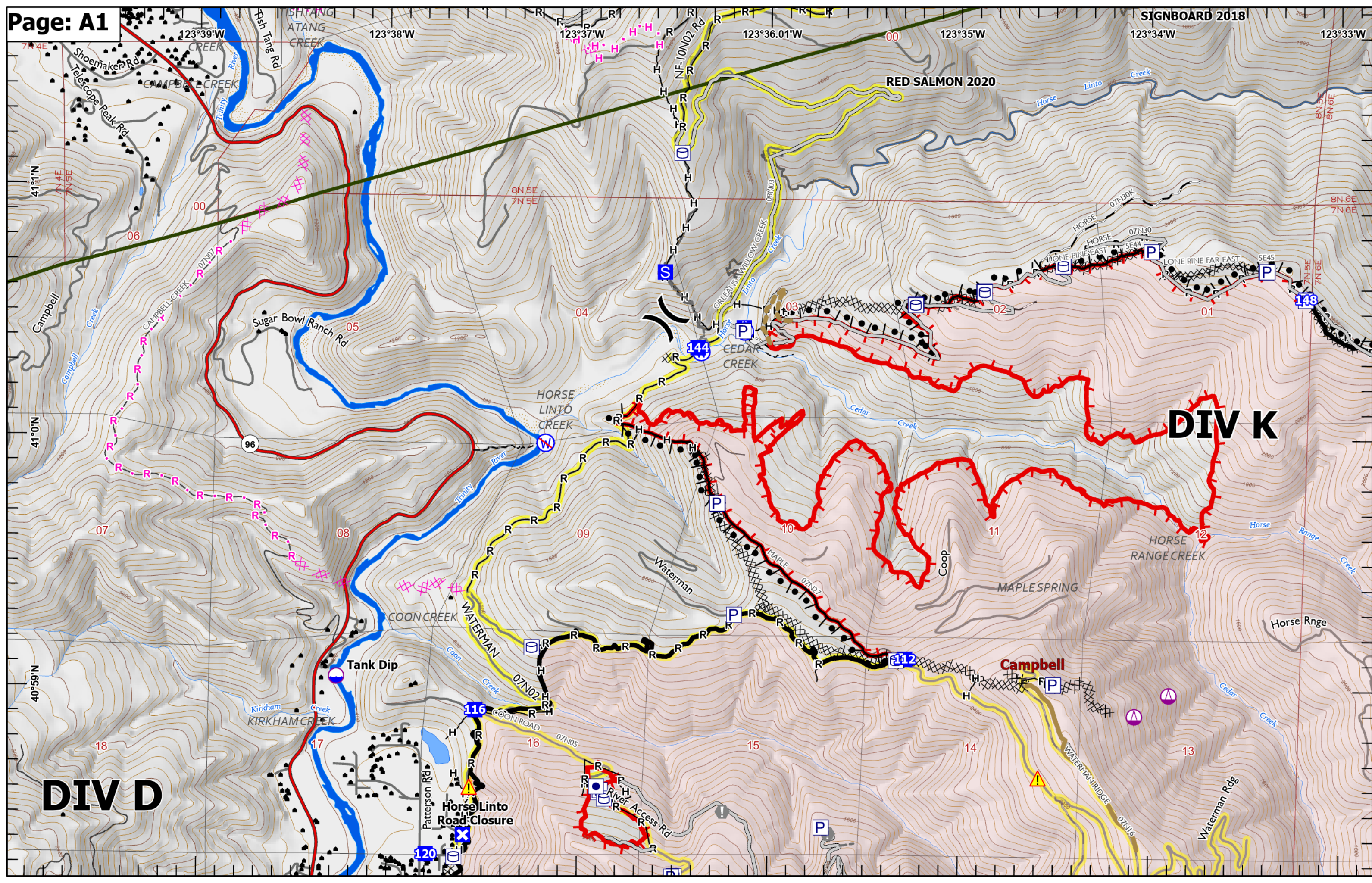


Miles
0 1 1/2 3

1:130,000

Last Updated
8/31/2022
23:55





DIV K

DIV D

Horse Linto Road Closure

RED SALMON 2020

144

148

112

116

120

96

00

06

05

04

07

08

09

10

11

12

18

17

16

15

14

13

123°39'W

123°38'W

123°37'W

123°36.01'W

123°35'W

123°34'W

123°33'W

41°11'N

41°0'N

40°59'N

8N 5E
7N 5E

8N 6E
7N 6E

8N 5E
7N 6E

Shoemaker Rd

Telescope Peak Rd

Sugar Bowl Ranch Rd

Horse Linto Creek

Cedar Creek

Coon Creek

Kirkham Creek

Patterson Rd

River Access Rd

Maple Spring

Campbell

Waterman Rd

Campbell Creek

Trinity River

ATANG CREEK

SHIANG CREEK

ORLEANS WILLOW CREEK

Linto Creek

Cedar Creek

Horse Linto Creek

Coon Creek

Kirkham Creek

Waterman Creek

Campbell Creek

Lone Pine Creek

Horse Range Creek

Cedar Creek

Waterman Rd

Trinity River

Trinity River

Trinity River

Trinity River

Trinity River

Trinity River

Trinity River

Trinity River

Trinity River

Trinity River

Trinity River

Trinity River

Trinity River

Trinity River

Trinity River

Trinity River

Trinity River

Trinity River

Trinity River

Trinity River

Trinity River

Trinity River

Trinity River

Trinity River

Trinity River

Trinity River

Trinity River

Trinity River

Trinity River

Trinity River

Trinity River

Trinity River

Trinity River

Trinity River

Trinity River

Trinity River

Trinity River

Trinity River

Trinity River

Trinity River

Trinity River

Trinity River

Trinity River

Trinity River

Trinity River

Trinity River

Trinity River

Trinity River

Trinity River

Trinity River

Trinity River

Trinity River

Trinity River

Trinity River

Trinity River

Trinity River

Trinity River

Trinity River

Trinity River

Trinity River

Trinity River

Trinity River

Trinity River

Trinity River

Trinity River

Trinity River

Trinity River

Trinity River

Trinity River

Trinity River

Trinity River

Trinity River

Trinity River

Trinity River

Trinity River

Trinity River

Trinity River

Trinity River

Trinity River

Trinity River

Trinity River

Trinity River

Trinity River

Trinity River

Trinity River

Trinity River

Trinity River

Trinity River

Trinity River

Trinity River

Trinity River

Trinity River

Trinity River

Trinity River

Trinity River

Trinity River

Trinity River

Trinity River

Trinity River

Trinity River

Trinity River

Trinity River

Trinity River

Trinity River

Trinity River

Trinity River

Trinity River

Trinity River

Trinity River

Trinity River

Trinity River

Trinity River

Trinity River

Trinity River

Trinity River

Trinity River

Trinity River

Trinity River

Trinity River

Trinity River

Trinity River

Trinity River

Trinity River

Trinity River

Trinity River

Trinity River

Trinity River

Trinity River

Trinity River

Trinity River

Trinity River

Trinity River

Trinity River

Trinity River

Trinity River

Trinity River

Trinity River

Trinity River

Trinity River

Trinity River

Trinity River

Trinity River

Trinity River

Trinity River

Trinity River

Trinity River

Trinity River

Trinity River

Trinity River

Trinity River

Trinity River

Trinity River

Trinity River

Trinity River

Trinity River

Trinity River

Trinity River

Trinity River

Trinity River

Trinity River

Trinity River

Trinity River

Trinity River

Trinity River

Trinity River

Trinity River

Trinity River

Trinity River

Trinity River

Trinity River

Trinity River

Trinity River

Trinity River

Trinity River

Trinity River

Trinity River

Trinity River

Trinity River

Trinity River

Trinity River

Trinity River

Trinity River

Trinity River

Trinity River

Trinity River

Trinity River

Trinity River

Trinity River

Trinity River

Trinity River

Trinity River

Trinity River

Trinity River

Trinity River

Trinity River

Trinity River

Trinity River

Trinity River

Trinity River

Trinity River

Trinity River

Trinity River

Trinity River

Trinity River

Trinity River

Trinity River

Trinity River

Trinity River

Trinity River

Trinity River

Trinity River

Trinity River

Trinity River

Trinity River

Trinity River

Trinity River

Trinity River

Trinity River

Trinity River

Trinity River

Trinity River

Trinity River

Trinity River

Trinity River

Trinity River

Trinity River

Trinity River

Trinity River

Trinity River

Trinity River

Trinity River

Trinity River

Trinity River

Trinity River

Trinity River

Trinity River

Trinity River

Trinity River

Trinity River

Trinity River

Trinity River

Trinity River

Trinity River

Trinity River

Trinity River

Trinity River

Trinity River

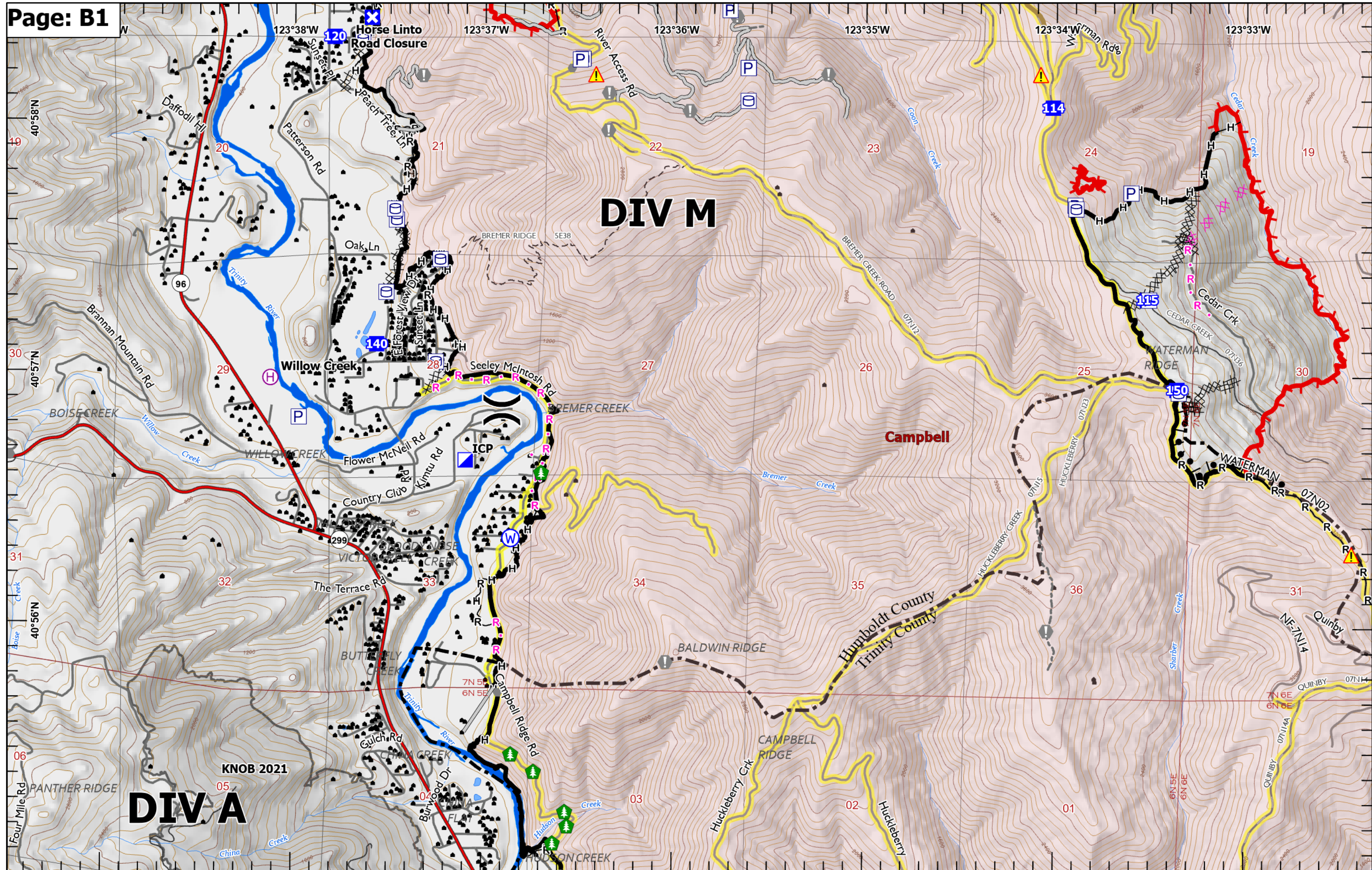
Trinity River

Trinity River

Trinity River

Trinity River

Trinity River

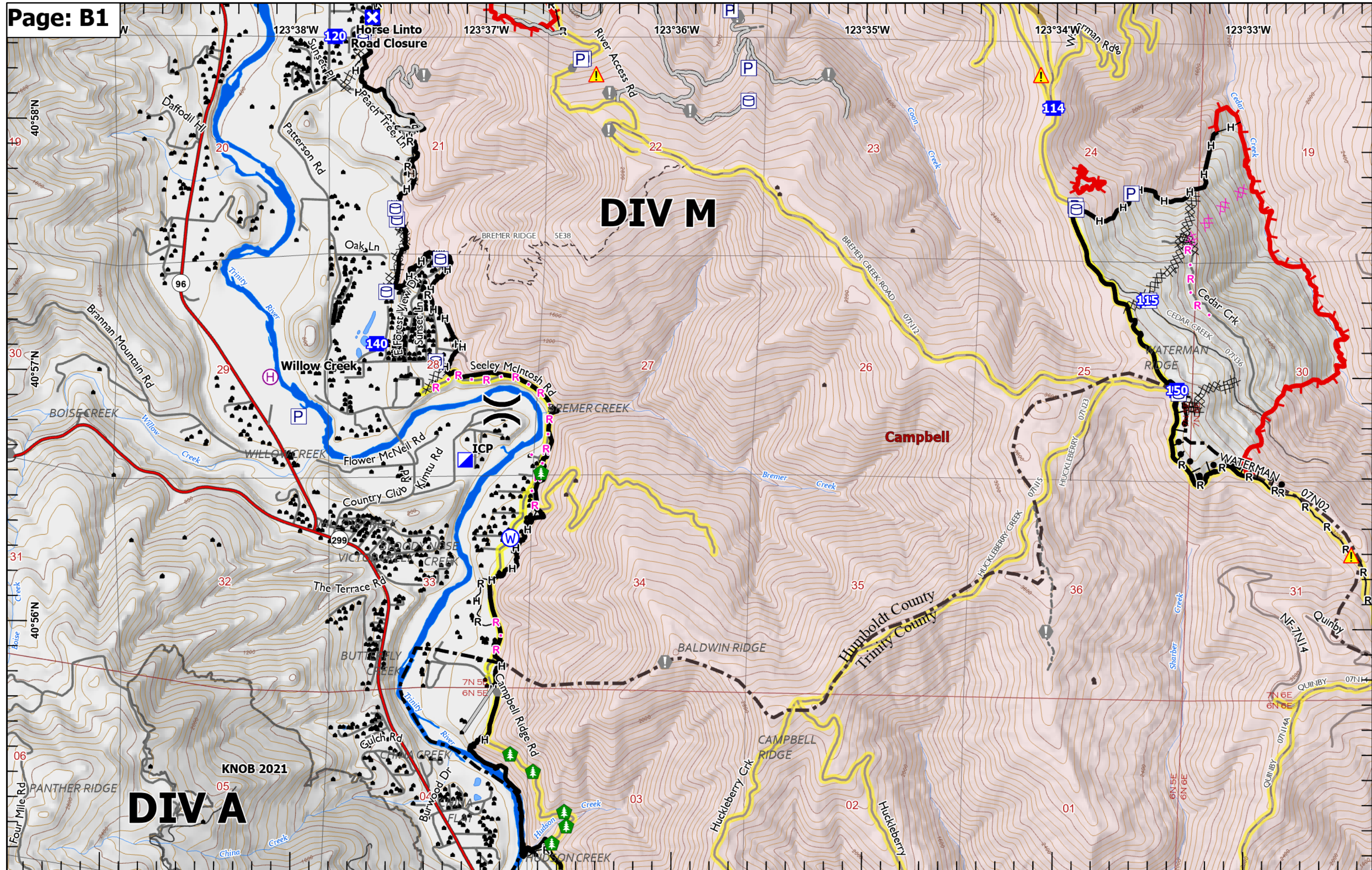


DIV M

Campbell

DIV A

NOB 2021

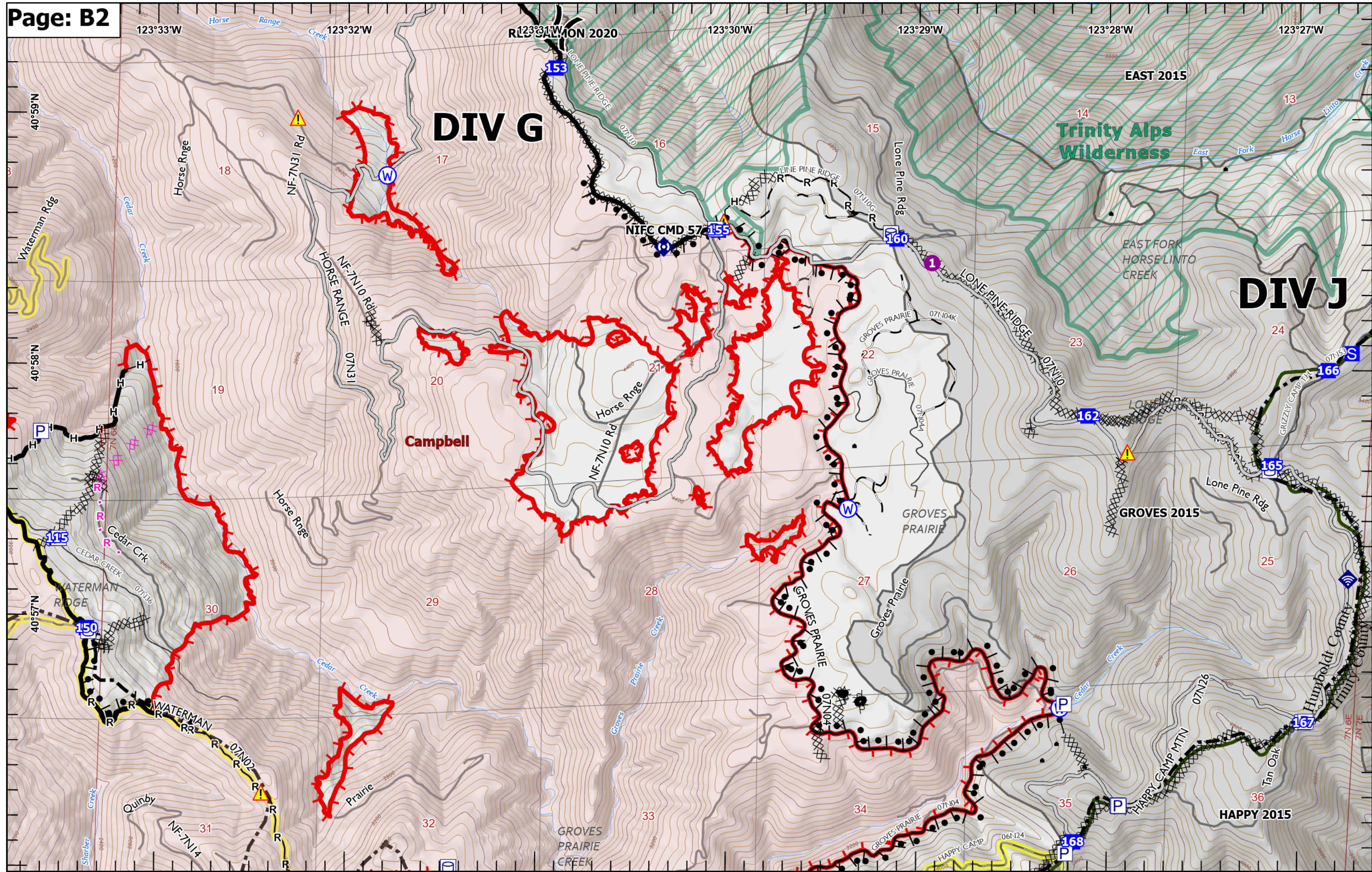


DIV M

Campbell

DIV A

NOB 2021



DIV G

DIV J

**Trinity Alps
Wilderness**

Campbell

GROVES 2015

HAPPY 2015

RL 331 W/ON 2020

EAST 2015

Tan Oak

**EAST FORK
HORSE LINTO
CREEK**

**HAPPY CAMP
MTN**

**Humboldt County
Trinity County**

NIFC CMD 57

160

166

165

167

168

155

150

153

155

162

123°33'W

123°32'W

123°30'W

123°29'W

123°28'W

123°27'W

40°59'N

40°58'N

40°57'N

18

19

20

29

30

31

32

28

33

27

34

26

35

25

36

24

25

23

26

22

27

34

15

22

27

34

16

28

33

17

20

29

32

18

19

30

31

14

23

26

35

13

24

25

36

123°33'W

123°32'W

123°30'W

123°29'W

123°28'W

123°27'W

40°59'N

40°58'N

40°57'N

18

19

20

29

30

31

32

28

33

27

34

15

22

27

34

16

28

33

17

20

29

32

18

19

30

31

14

23

26

35

13

24

25

36

123°33'W

123°32'W

123°30'W

123°29'W

123°28'W

123°27'W

40°59'N

40°58'N

40°57'N

18

19

20

29

30

31

32

28

33

27

34

15

22

27

34

16

28

33

17

20

29

32

18

19

30

31

14

23

26

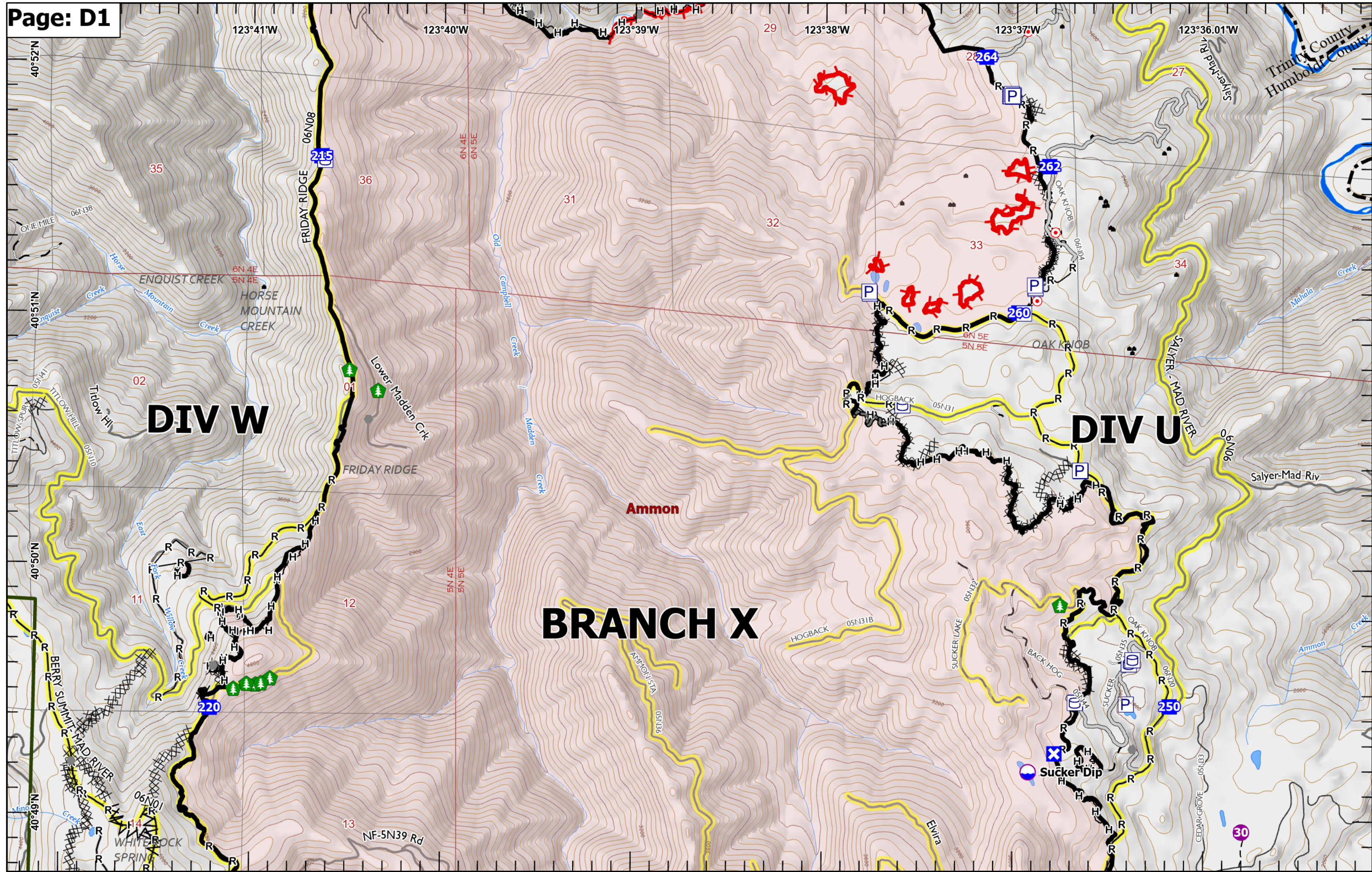
35

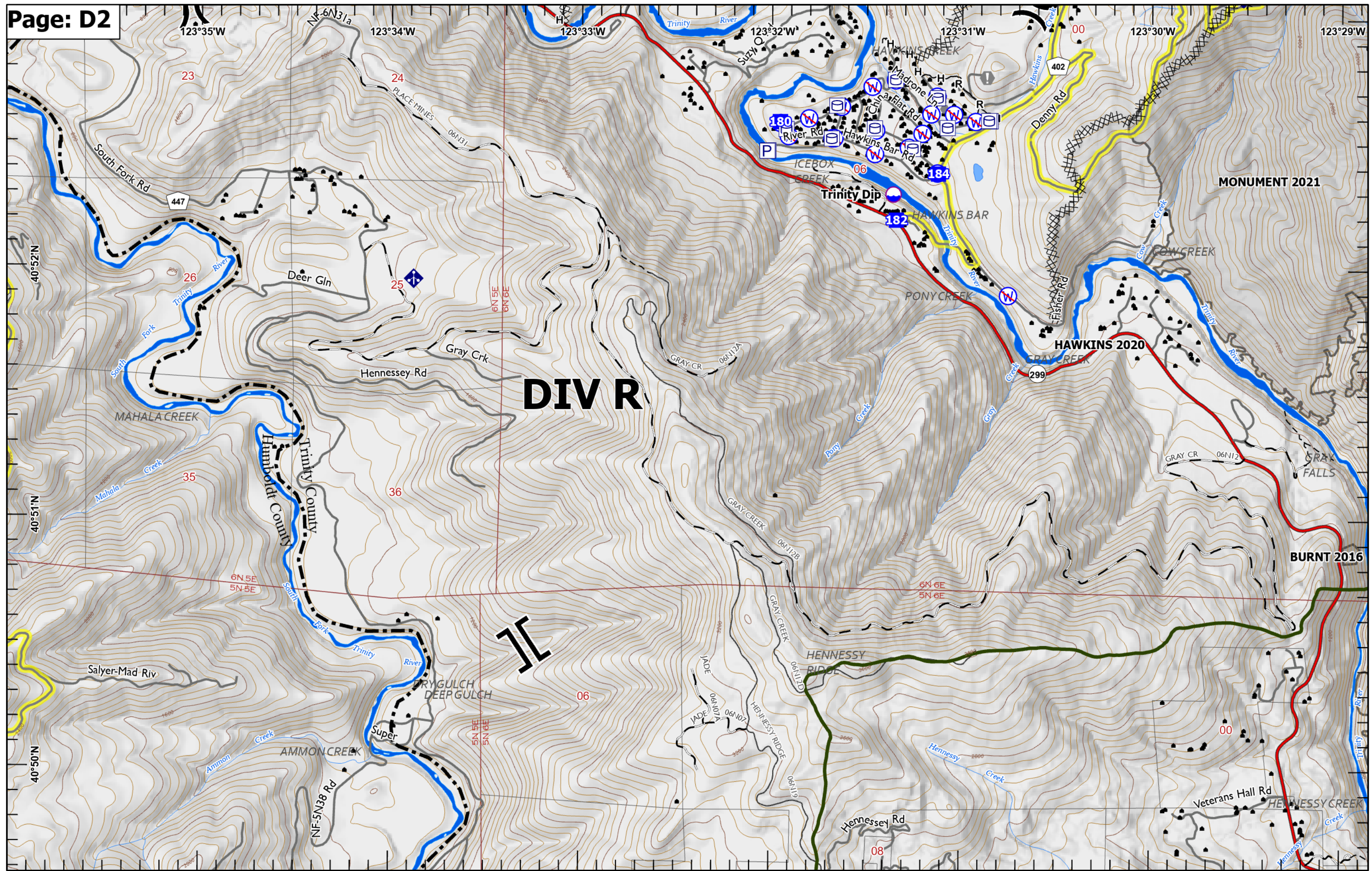
13

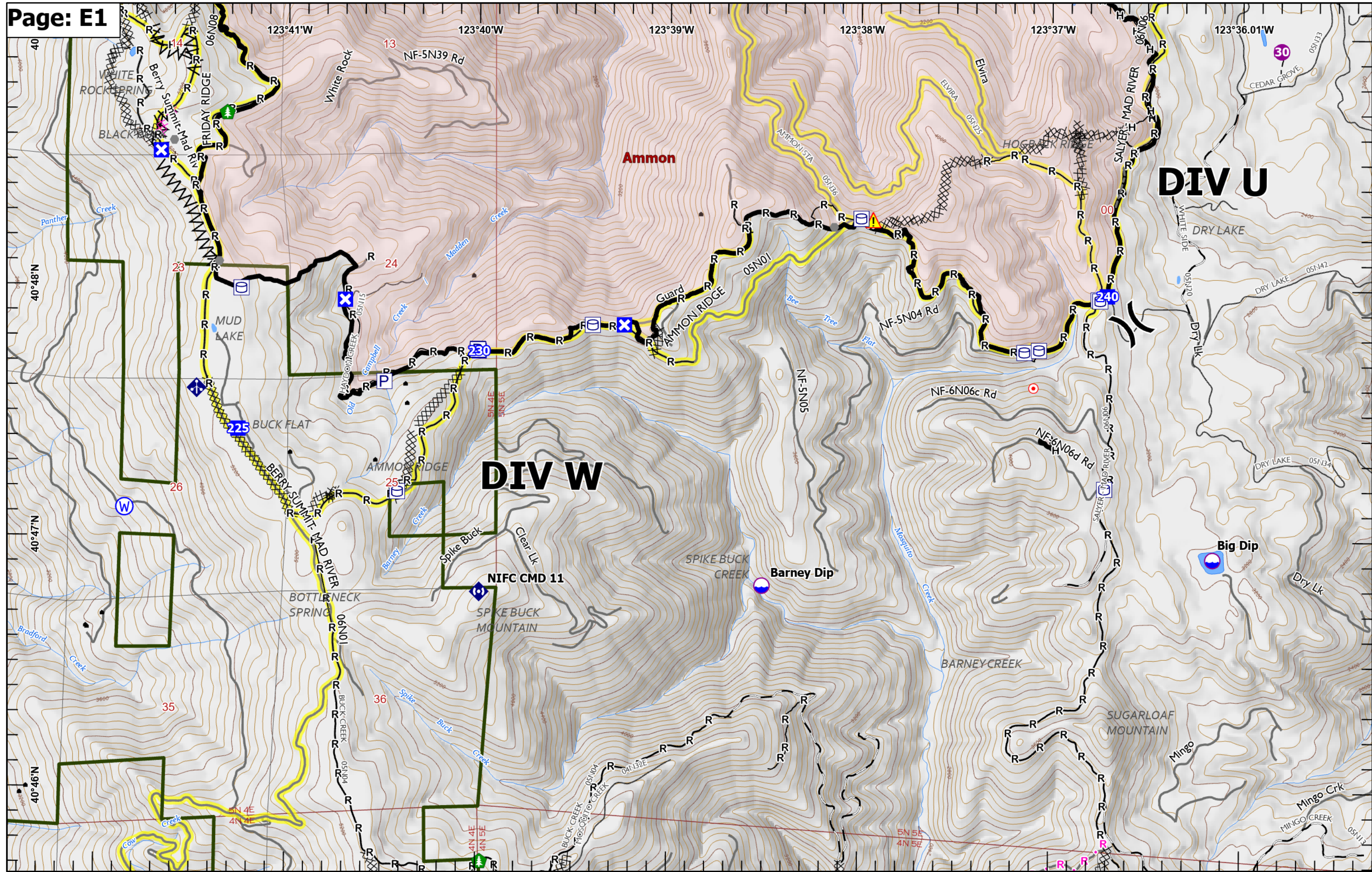
24

25

36







Ammon

DIV U

DIV W

NIFC CMD 11

Barney Dip

Big Dip

