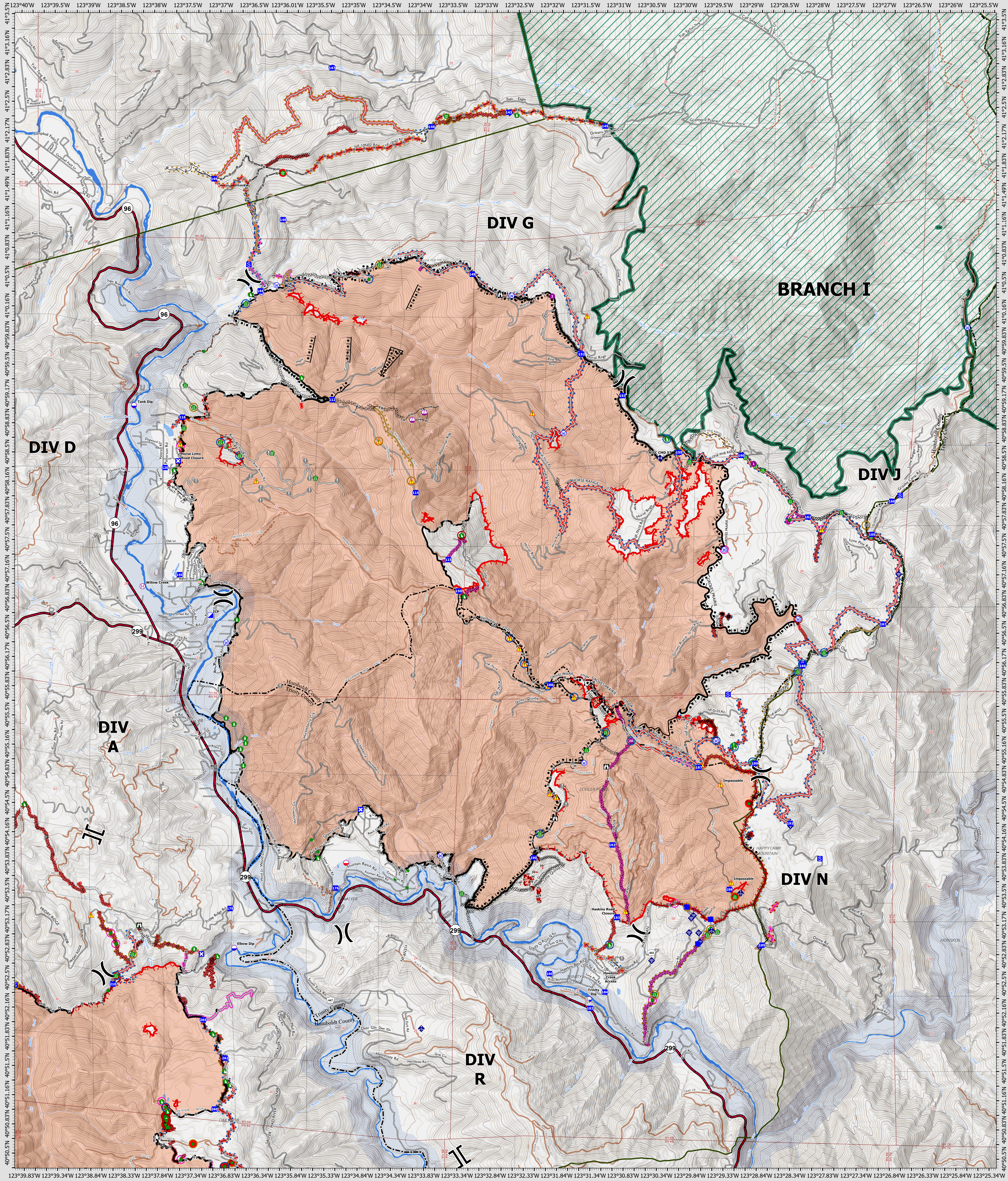


Suppression Repair Branch I

9/3/2022



SRF Lightning Complex
 CA-SRF-000620
 9/3/2022
 40,768 acres
 IR updated 9/02/2022

- | | | | | |
|--|--|---|---|--|
| <p>Repair Priority Point</p> <ul style="list-style-type: none"> Low Medium High <p>Repair Priority Line</p> <ul style="list-style-type: none"> Low Medium High | <p>Repair Status Point</p> <ul style="list-style-type: none"> In Use - Fire Management Repair Needed Other - See Comments <p>Repair Status Line</p> <ul style="list-style-type: none"> In Use - Fire Management Needs Assessment Repair Needed In Progress Completed - Ready for Inspection Completed - Inspected No Repair Needed Other - See Comments | <ul style="list-style-type: none"> Contained Uncontained Dip Site Mobile Retardant Base Heliport Helibase Sling Site Division Break Branch Break Incident Command Post Drop Point Closure Staging Area Lookout Value at Risk | <ul style="list-style-type: none"> Other Structure Wrap Road Repair Resource Location Repair Point Hazard Tree Fence - Cut/Damaged Clear Path Clean Up Area Mobile Weather Unit Internet Access Repeater Hazard Water Source Completed Burnout | <ul style="list-style-type: none"> Completed Dozer Line Completed Hand Line Completed Road as Line Access or Improved Road Other Repair Line Road Repair Retardant Drop Wildfire Daily Fire Perimeter |
|--|--|---|---|--|



0 0.5 1 2 Miles

Datum: North American 1983
 GIS Updated: 9/3/2022 0612