

SRF Lightning Complex
 CA-SRF-000620
 9/4/2022
 41,178 acres
 IR updated 9/04/2022

- | |
|--|
| <ul style="list-style-type: none"> ✕ Division Break ⊙ Aviation Check Point ⬇ Dip Site ⊙ Mobile Retardant Base ⊙ Helispot ⊙ Helibase ⊙ Sling Site ⊙ Unimproved Landing Area ⊙ Incident Command Post ⬇ Drop Point ⊙ Closure ⊙ Camp ⊙ Staging Area ⊙ Mobile Weather Unit ⬇ Internet Access ⬇ Repeater ⬇ Water Source ⬇ Restricted Water Source ⬇ Other ⬇ Bridge ⬇ Retardant Drop ⬇ Aviation Route ⬇ UAS Launch and Recovery Zone ⬇ Temporary Flight Restriction ⬇ Completed Dozer Line ⬇ Completed Fuel Break ⬇ Completed Hand Line ⬇ Completed Road as Line ⬇ Planned Burnout ⬇ Planned Dozer Line ⬇ Planned Hand Line ⬇ Planned Road as Line ⬇ Completed Dozer Line ⬇ Completed Fuel Break ⬇ Completed Hand Line ⬇ Summit ⬇ Tower ⬇ Forest Administrative Boundaries ⬇ County Line ⬇ Powerline ⬇ Fire Perimeter ⬇ Uncontained ⬇ Horse Mtn Botanic Area |
|--|

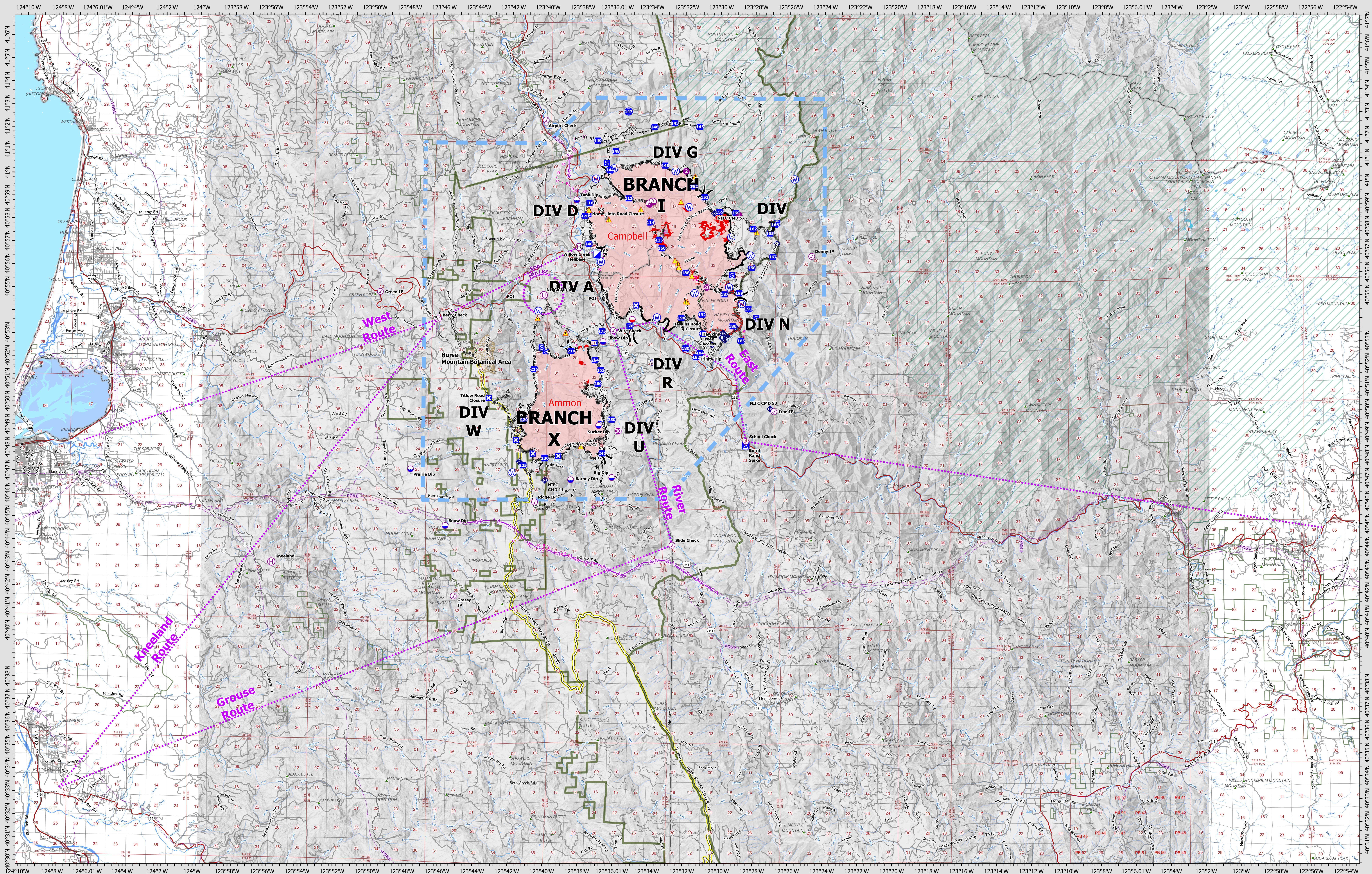








0 0.5 1 2 Miles
 Datum: North American 1983



SRF Lightning Complex
 CA-SRF-000620
 9/4/2022
 41,178 acres
 IR updated 9/04/2022

- | |
|---|
| <ul style="list-style-type: none"> ✕ Division Break ⊙ Aviation Check Point ⊙ Dip Site ⊙ Mobile Retardant Base ⊙ Helispot ⊙ Helibase ⊙ Sling Site ⊙ Unimproved Landing Area ⊙ Incident Command Post ⊙ Drop Point ⊙ Closure ⊙ Camp ⊙ Staging Area ⊙ Mobile Weather Unit ⊙ Internet Access ⊙ Repeater ⊙ Water Source ⊙ Restricted Water Source ⊙ Other ⊙ Bridge ⊙ Retardant Drop ⊙ Aviation Route ⊙ UAS Launch and Recovery Zone ⊙ Temporary Flight Restriction ⊙ Completed Dozer Line ⊙ Completed Fuel Break ⊙ Completed Hand Line ⊙ Completed Road as Line ⊙ Planned Burnout ⊙ Planned Dozer Line ⊙ Planned Hand Line ⊙ Planned Road as Line ⊙ Contained ⊙ Uncontained ⊙ Summit ⊙ Tower ⊙ Forest Administrative Boundaries ⊙ County Line ⊙ Powerline ⊙ Fire Perimeter ⊙ Aerial Hazard ⊙ Horse Mtn Botanic Area |
|---|








Miles
0 0.75 1.5 3

Datum: North American 1983



CAIIMT15 GISB Updated: 9/4/2022 08:12