

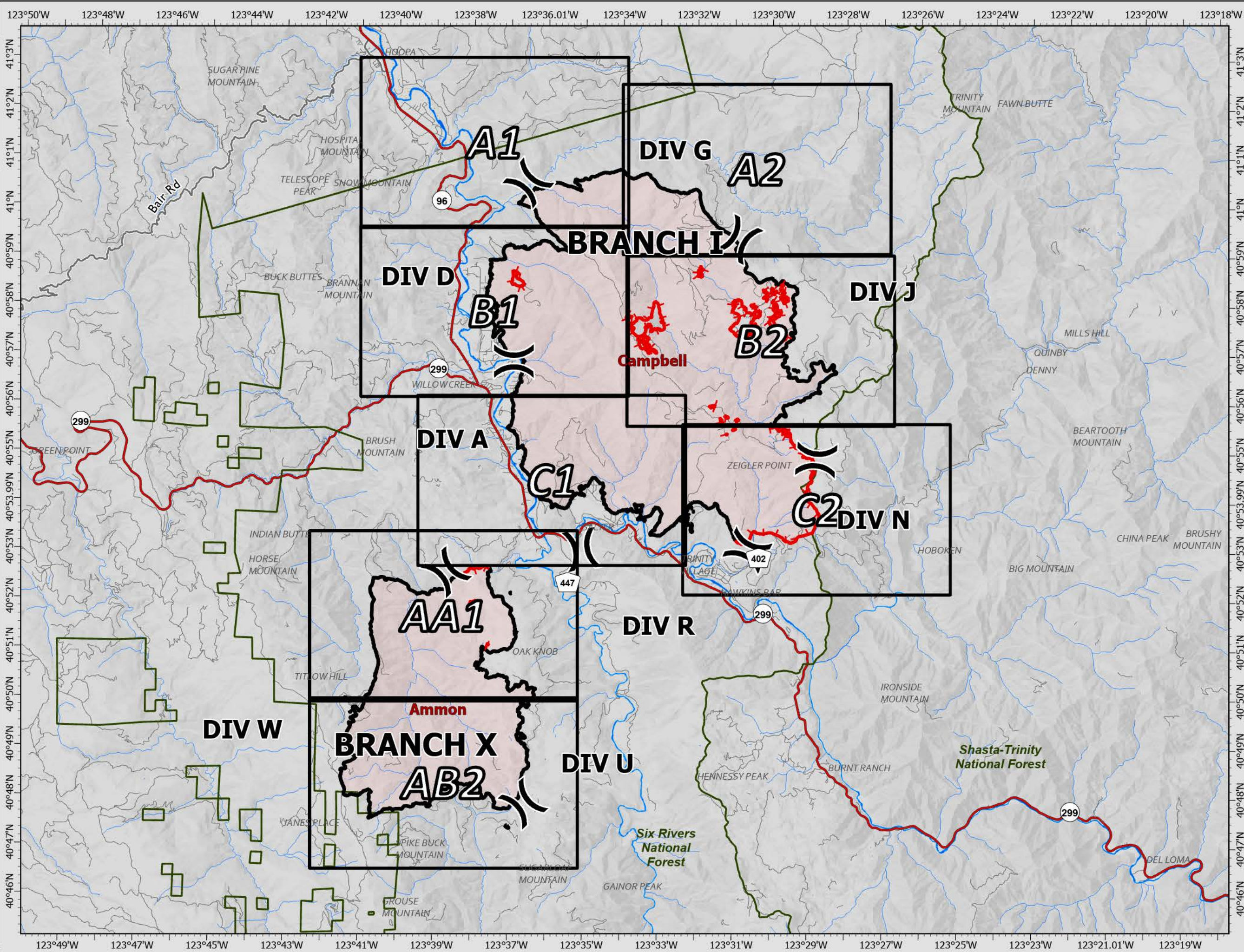
IAP

SRF Lightning Complex

CA-SRF-000620
9/4/2022

41,178 acres
IR updated 9/04/2022

- Map Grid Index
- Division Break
- Contained
- Uncontained
- Wildfire Daily Fire Perimeter
- Highways
- Local Connectors
- Local Roads



0 0.5 1 2 Miles
Datum: North American 1983
Author Name Updated: 9/4/2022 0816

SRF Lightning Complex

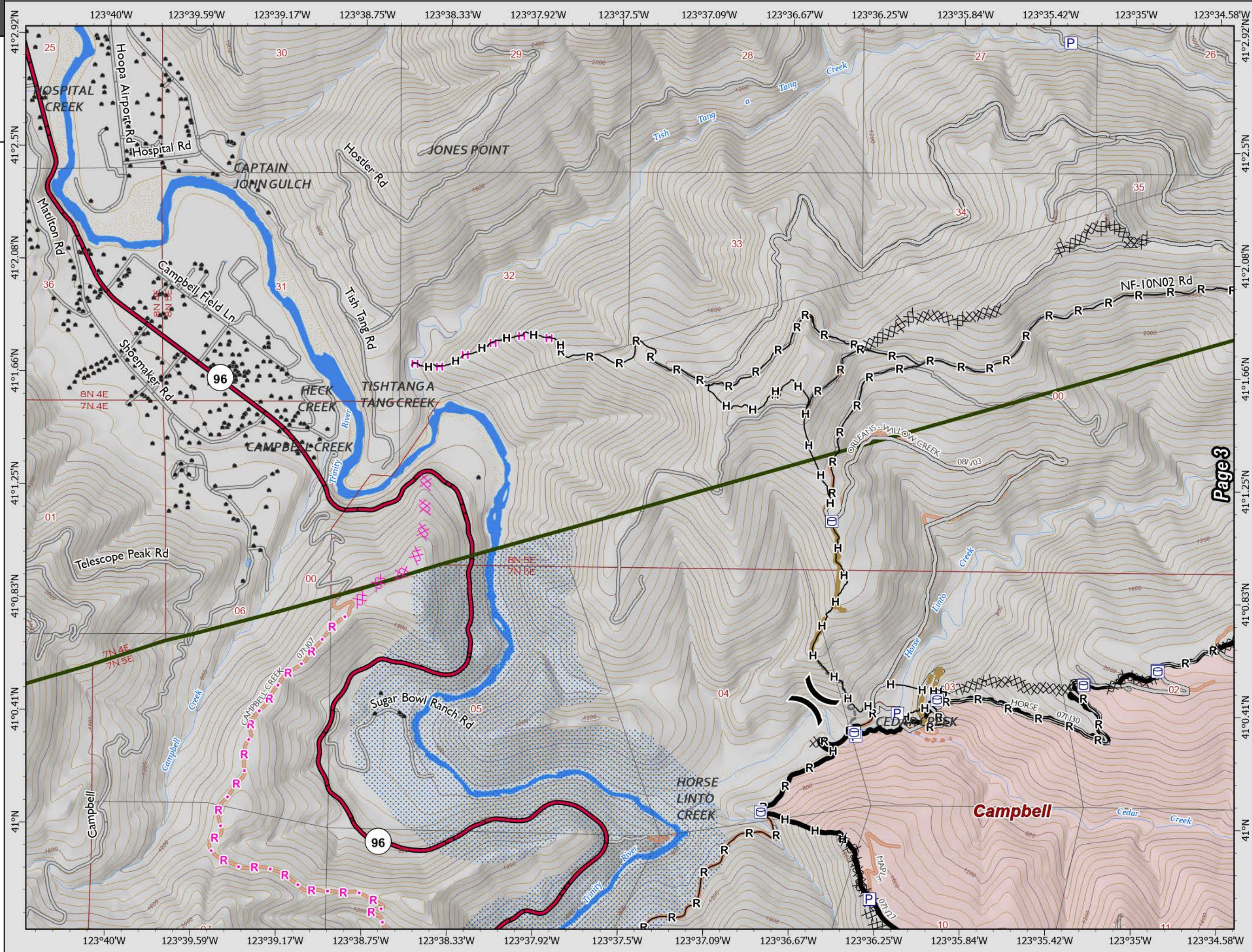
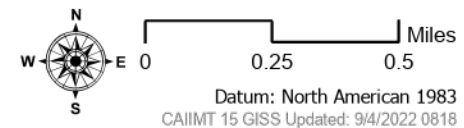
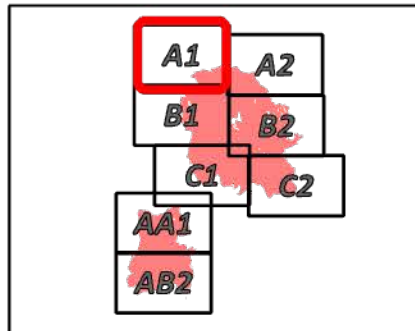
CA-SRF-000620

9/4/2022

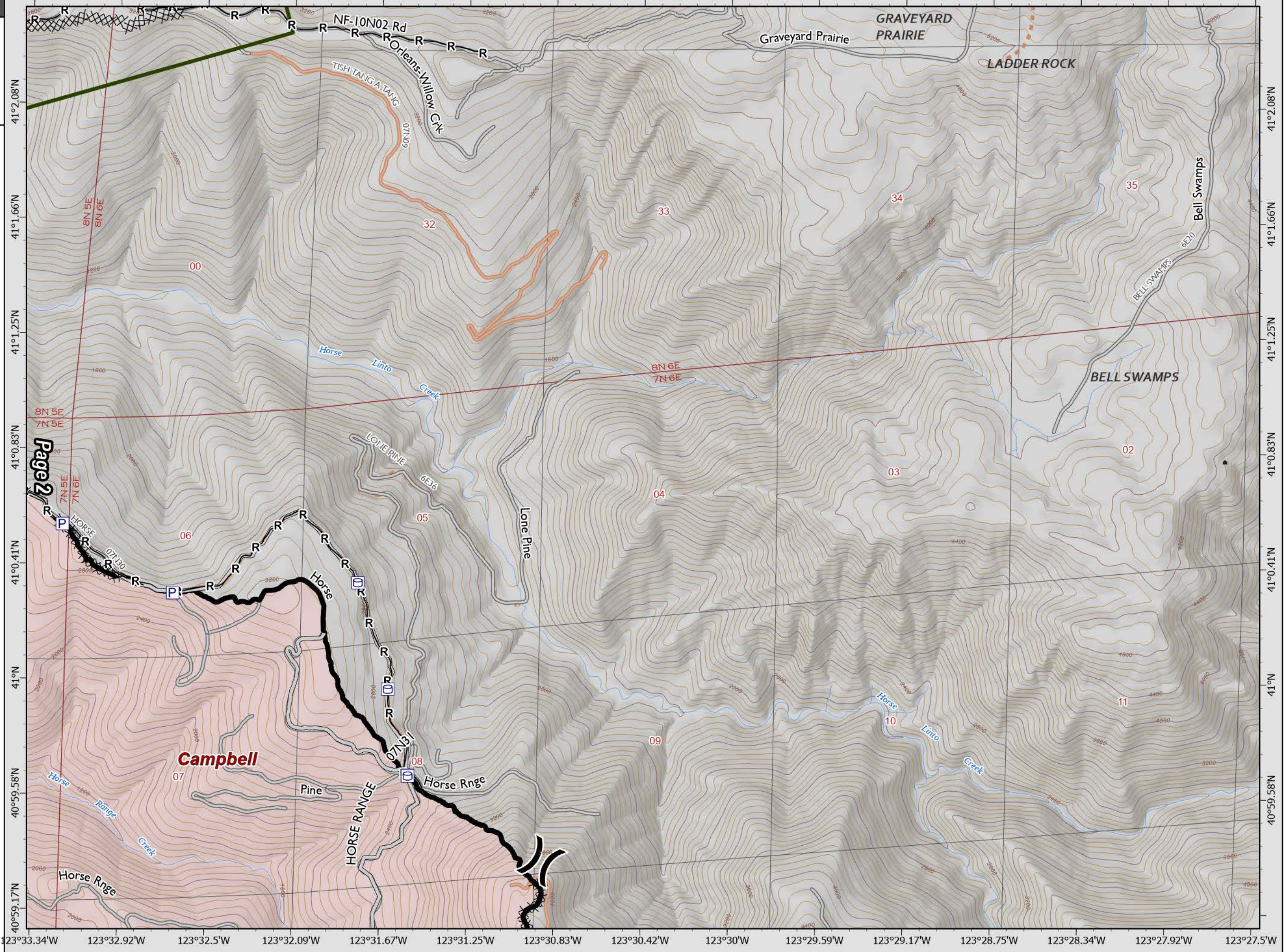
41,178 acres
IR updated 9/04/2022

- Pump
- Water Tank
- Division Break
- Completed Dozer Line
- Completed Hand Line
- Completed Road as Line
- Planned Dozer Line
- Planned Hand Line
- Planned Road as Line
- Access or Improved Road
- Other
- Repair Line
- Road Repair
- Contained
- Wildfire Daily Fire Perimeter
- County Boundary
- Forest Administrative Boundary
- Highways
- Local Roads
- Non Paved Roads
- Trails

Branch I Division D & G



Page 3

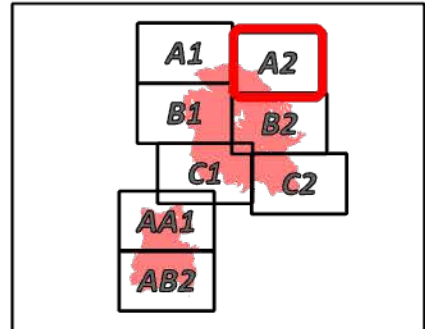


SRF Lightning Complex
CA-SRF-000620
9/4/2022
41,178 acres
IR updated 9/04/2022

- Pump
- Water Tank
- Division Break
- Completed Dozer Line
- Completed Road as Line
- Access or Improved Road
- Contained
- Wildfire Daily Fire Perimeter
- County Boundary
- Forest Administrative Boundary
- Local Roads
- Non Paved Roads
- Trails

Page 2

Branch I
Division G & J



SRF Lightning Complex

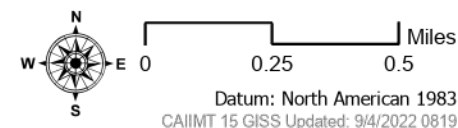
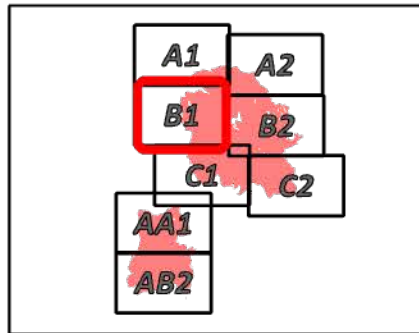
CA-SRF-000620

9/4/2022

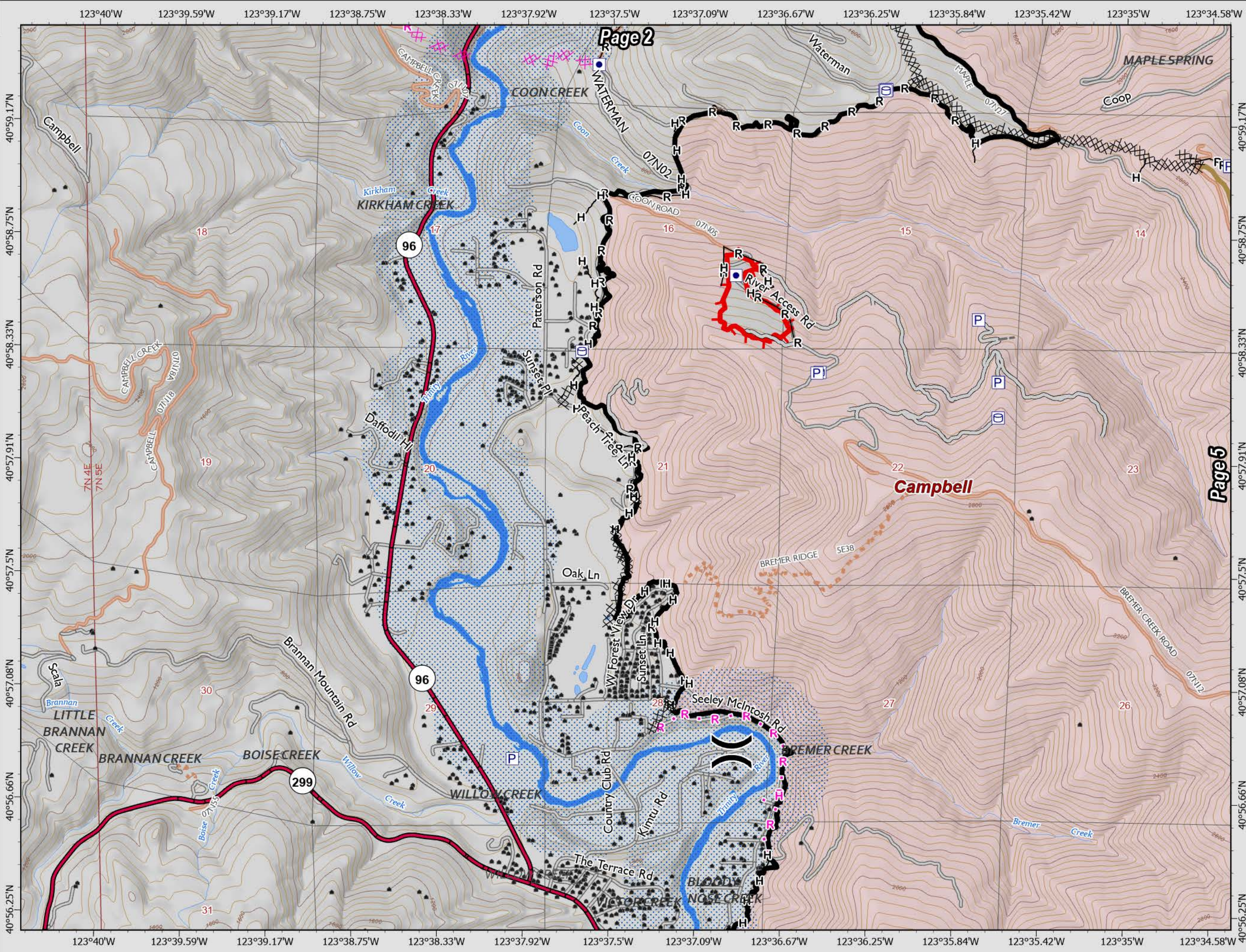
41,178 acres
IR updated 9/04/2022

- Other Property
- Pump
- Water Tank
- Division Break
- Completed Dozer Line
- Completed Hand Line
- Completed Road as Line
- Planned Dozer Line
- Planned Hand Line
- Planned Road as Line
- Access or Improved Road
- Other
- Repair Line
- Contained
- Uncontained
- Wildfire Daily Fire Perimeter
- County Boundary
- Forest Administrative Boundary
- Highways
- Local Roads
- Non Paved Roads
- Trails

Branch I
Division A & D



Datum: North American 1983
CAIIMT 15 GIS Updated: 9/4/2022 0819



Page 2

Page 5

SRF Lightning Complex

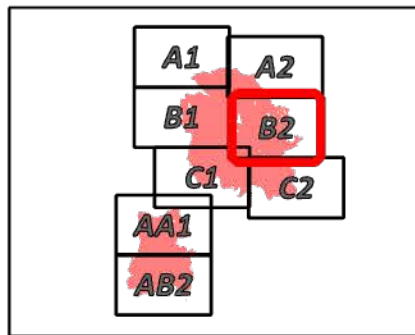
CA-SRF-000620

9/4/2022

41,178 acres
IR updated 9/04/2022

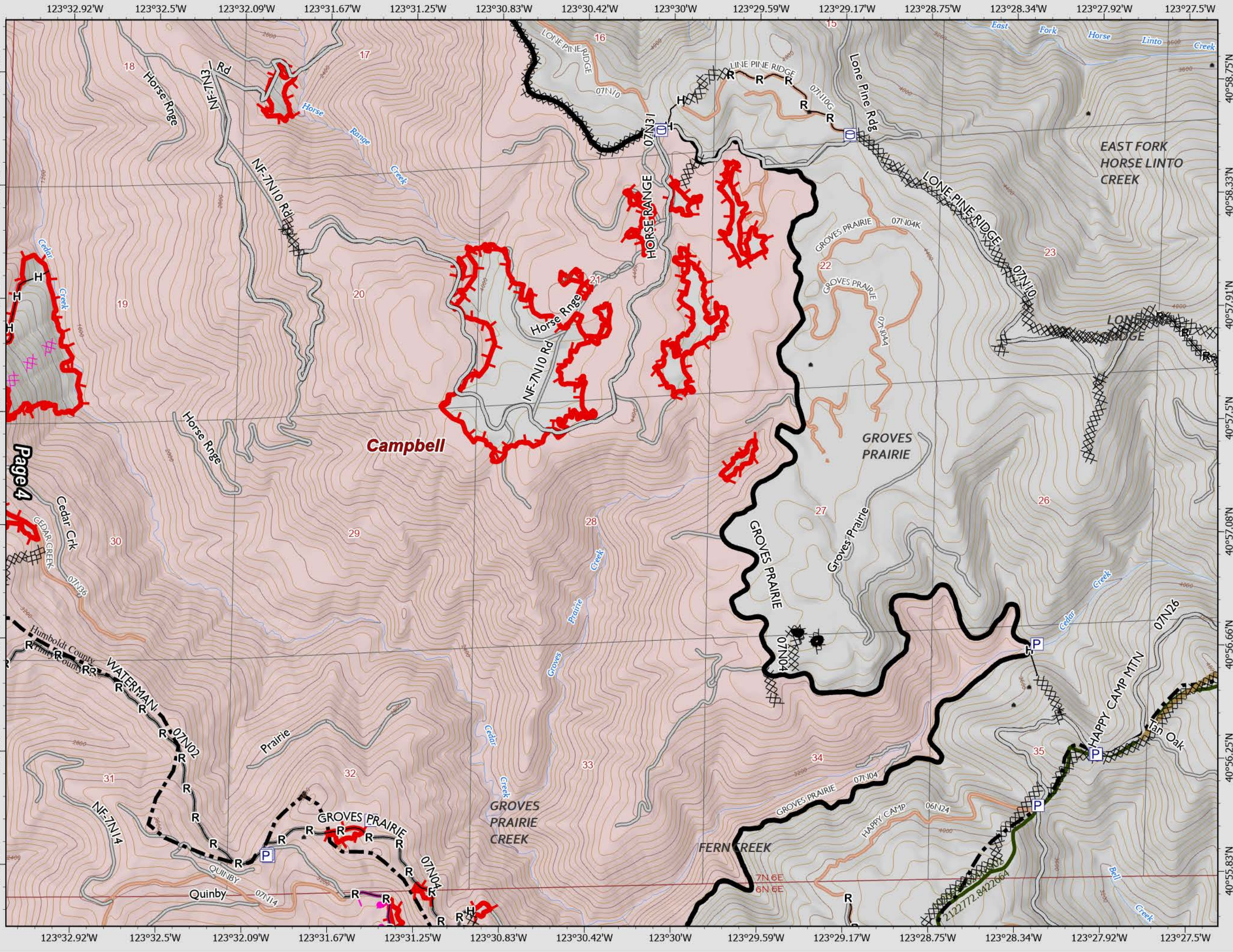
- Pump
- Water Tank
- Completed Dozer Line
- Completed Hand Line
- Completed Road as Line
- Planned Burnout
- Planned Dozer Line
- Planned Road as Line
- Access or Improved Road
- Repair Line
- Contained
- Uncontained
- Wildfire Daily Fire Perimeter
- County Boundary
- Forest Administrative Boundary
- Local Roads
- Non Paved Roads
- Trails

Branch I
Division J



0 0.25 0.5 Miles

Datum: North American 1983
CAIIMT 15 GISS Updated: 9/4/2022 0819



SRF Lightning Complex

CA-SRF-000620

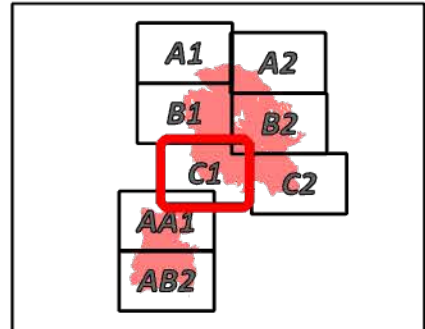
9/4/2022

41,178 acres

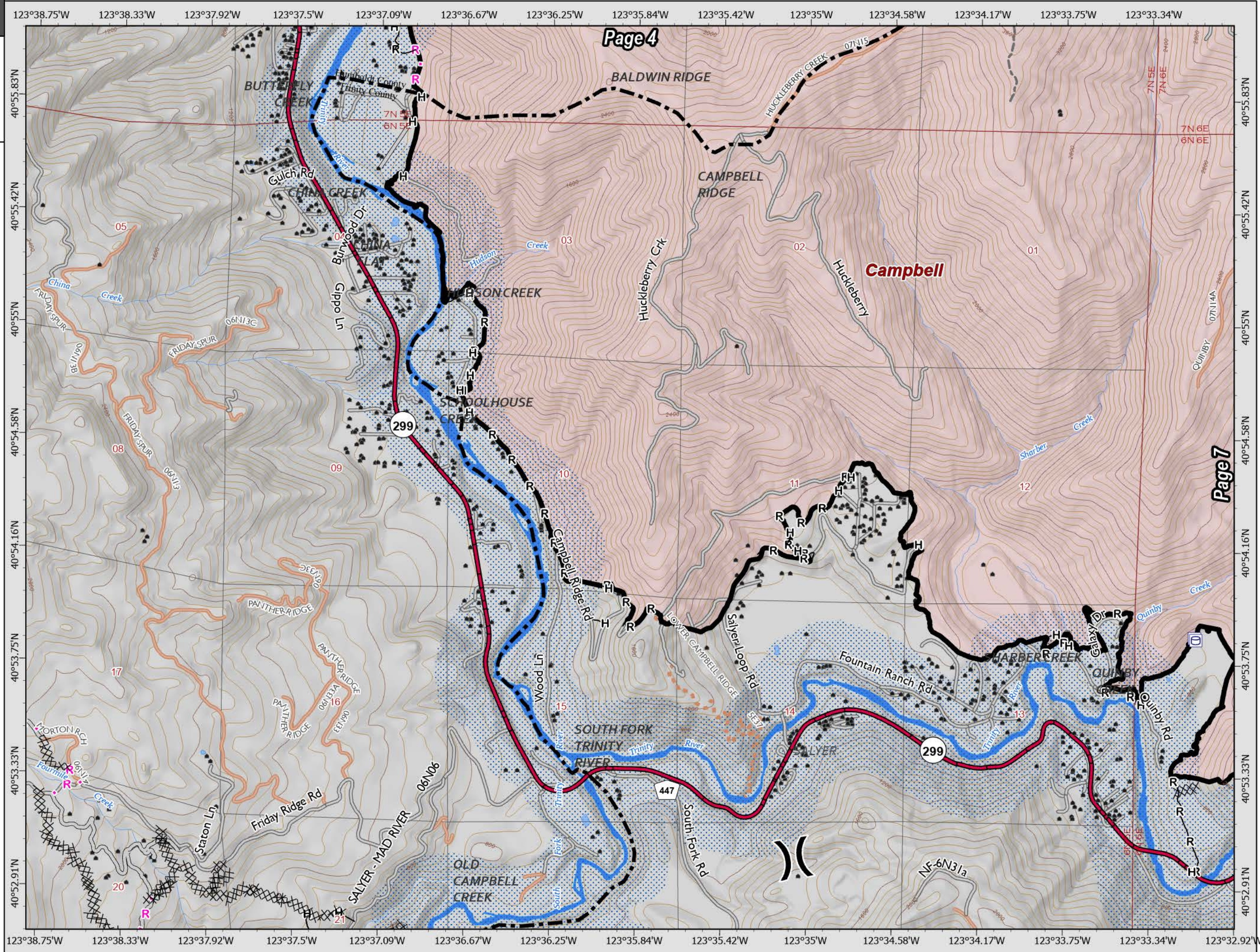
IR updated 9/04/2022

-  Water Tank
-  Division Break
-  Completed Dozer Line
-  Completed Hand Line
-  Completed Road as Line
-  Planned Road as Line
-  Access or Improved Road
-  Other
-  Contained
-  Wildfire Daily Fire Perimeter
-  County Boundary
-  Forest Administrative Boundary
-  Highways
-  Local Roads
-  Non Paved Roads
-  Trails

Branch I & X
Division A & R



Datum: North American 1983
CAIIMT 15 GIS Updated: 9/4/2022 0819



SRF Lightning Complex

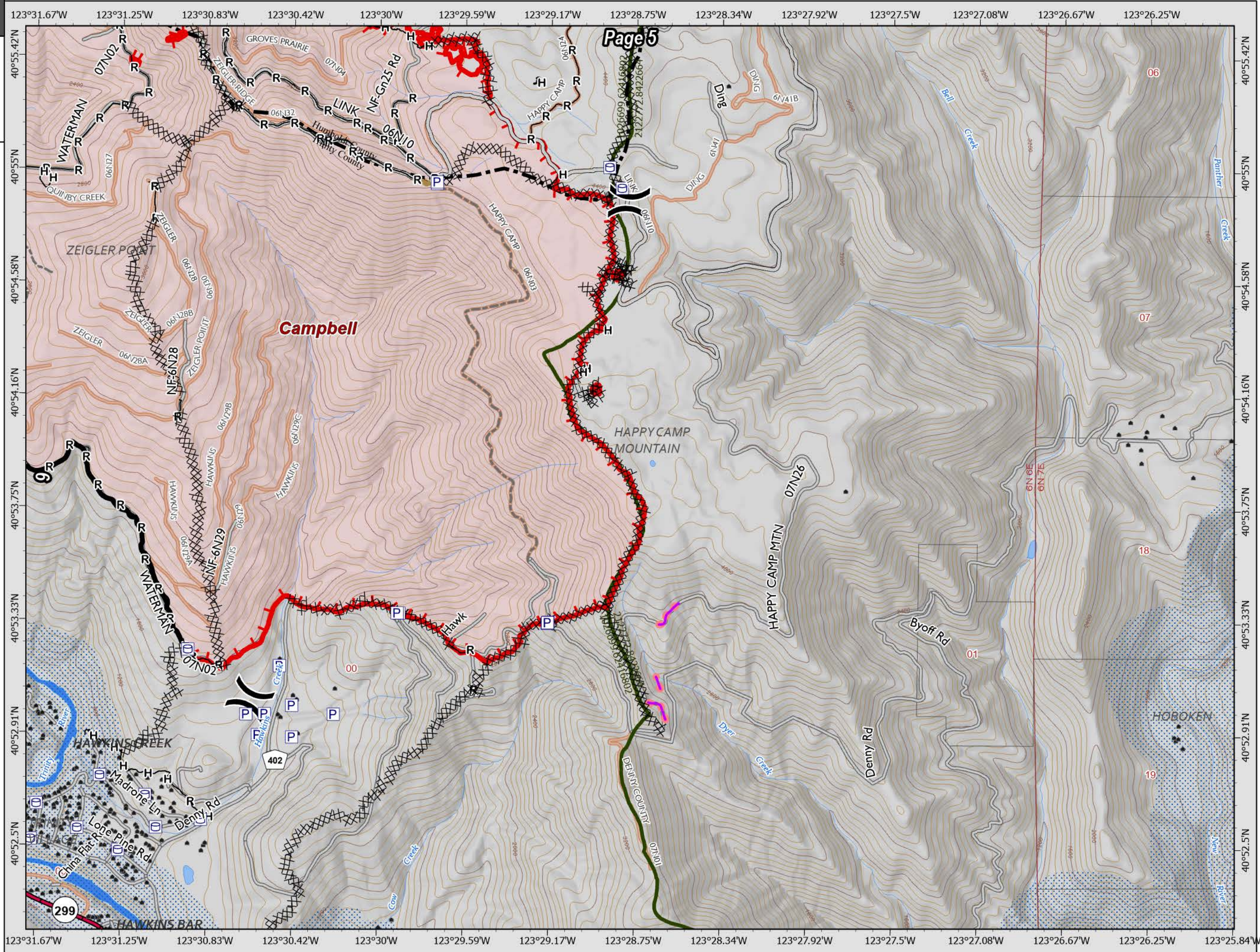
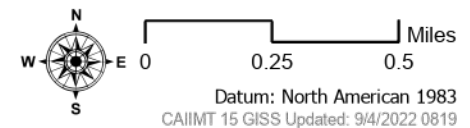
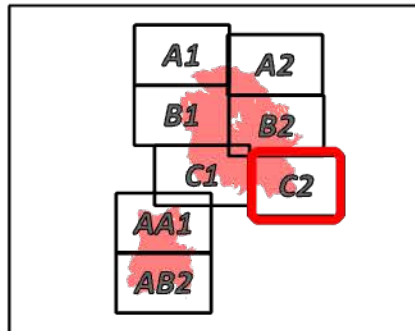
CA-SRF-000620

9/4/2022

41,178 acres
IR updated 9/04/2022

- Pump
- Water Tank
- Division Break
- Completed Dozer Line
- Completed Hand Line
- Completed Road as Line
- Planned Burnout
- Access or Improved Road
- Other
- Repair Line
- Retardant Drop
- Contained
- Uncontained
- Wildfire Daily Fire Perimeter
- County Boundary
- Forest Administrative Boundary
- Highways
- Local Roads
- Non Paved Roads
- Trails

Branch I
Division N & R



Page 5

SRF Lightning Complex

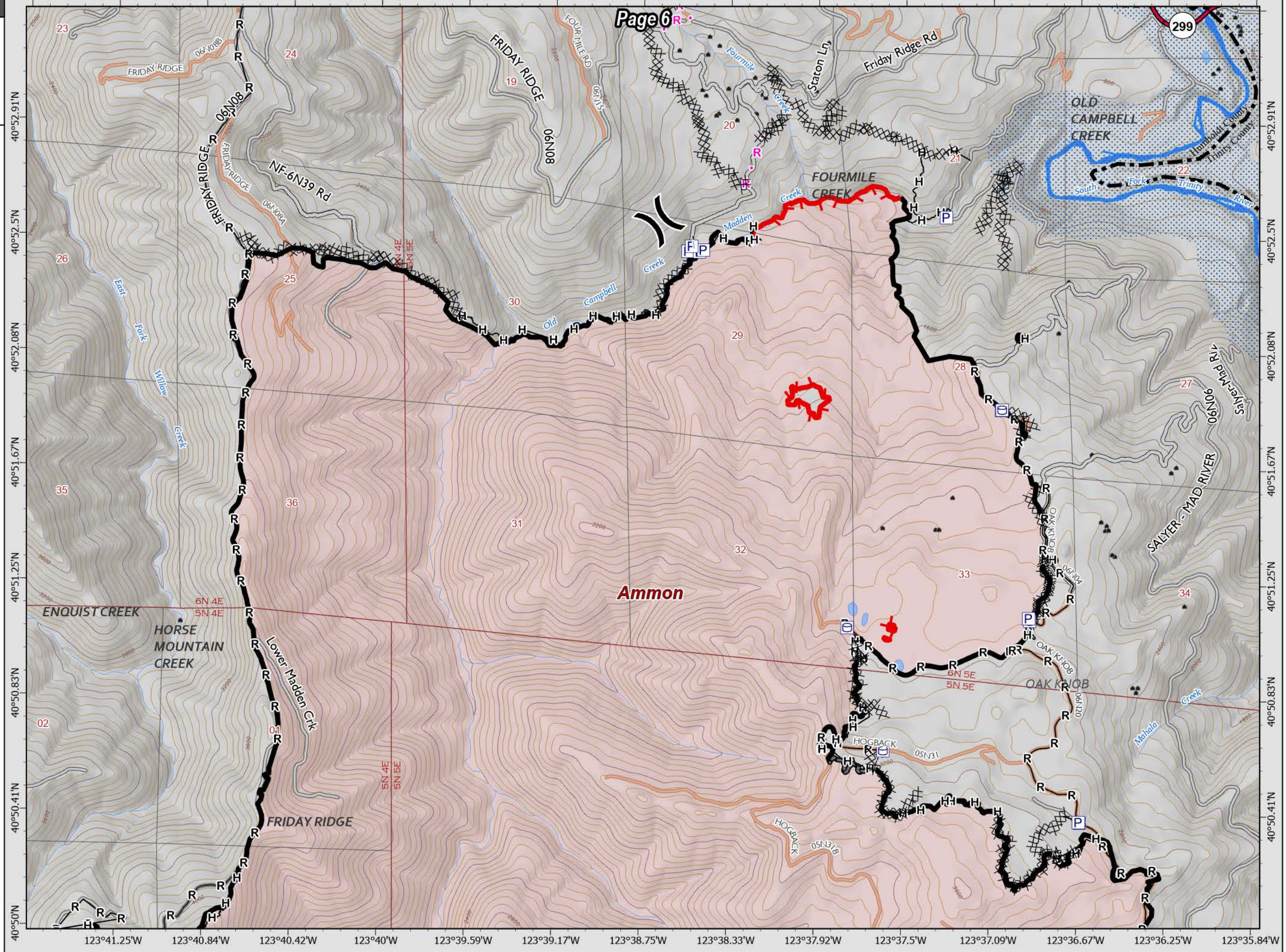
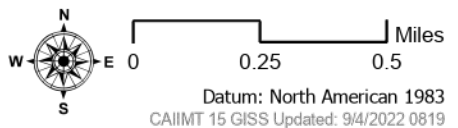
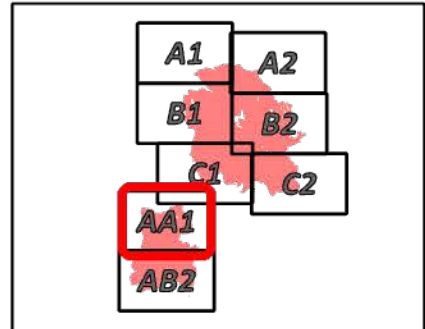
CA-SRF-000620

9/4/2022

41,178 acres
IR updated 9/04/2022

- Pump
- Water Tank
- Division Break
- Completed Dozer Line
- Completed Hand Line
- Completed Road as Line
- Planned Road as Line
- Access or Improved Road
- Other
- Contained
- Uncontained
- Wildfire Daily Fire Perimeter
- County Boundary
- Forest Administrative Boundary
- Highways
- Local Roads
- Non Paved Roads
- Trails

Branch X
Division W & U North



Page 6

299

SRF Lightning Complex

CA-SRF-000620

9/4/2022

41,178 acres
IR updated 9/04/2022

- Pump
- Water Tank
- Division Break
- Completed Dozer Line
- Completed Fuel Break
- Completed Hand Line
- Completed Road as Line
- Planned Dozer Line
- Access or Improved Road
- Other
- Contained
- Wildfire Daily Fire Perimeter
- County Boundary
- Forest Administrative Boundary
- Local Roads
- Non Paved Roads
- Trails

Branch X
Division W & U South

