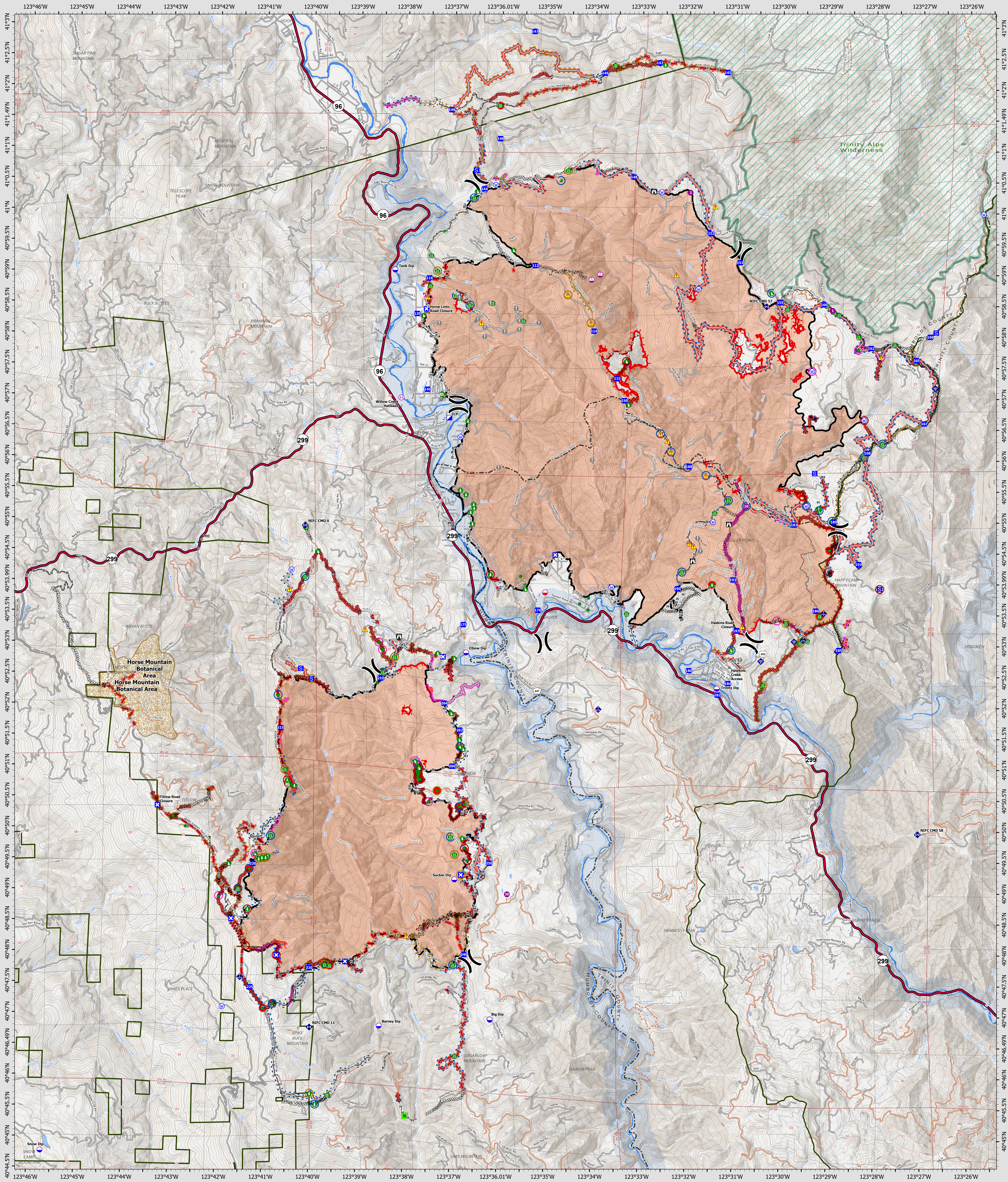


Suppression Repair Overview

9/4/2022



SRF Lightning Complex
 CA-SRF-000620
 9/4/2022
 41,178 acres
 IR updated 9/04/2022

- | | | | | |
|--|---|--|--|---|
| <p>Repair Priority Point</p> <ul style="list-style-type: none"> Low Medium High <p>Repair Priority Line</p> <ul style="list-style-type: none"> Low Medium High | <p>Repair Status Point</p> <ul style="list-style-type: none"> In Use - Fire Management Repair Needed Completed - Inspected Other - See Comments <p>Repair Status Line</p> <ul style="list-style-type: none"> In Use - Fire Management Needs Assessment Repair Needed In Progress Completed - Ready for Inspection Completed - Inspected No Repair Needed Other - See Comments | <ul style="list-style-type: none"> Contained Uncontained Dip Site Mobile Retardant Base Helibase Sling Site Division Break Incident Command Post Drop Point Closure Staging Area Lookout Value at Risk Other Structure Wrap | <ul style="list-style-type: none"> Road Repair Resource Location Repair Point Hazard Tree Fence - Cut/Damaged Dozer Push Clean Up Area Mobile Weather Unit Internet Access Repeater Hazard Water Source Completed Dozer Line Completed Fuel Break Completed Hand Line Completed Road as Line | <ul style="list-style-type: none"> Access or Improved Road Other Repair Line Road Repair Retardant Drop Wildfire Daily Fire Perimeter Wild & Scenic Rivers Wilderness |
|--|---|--|--|---|



Datum: North American 1983
 GIS Updated: 9/4/2022 07:43