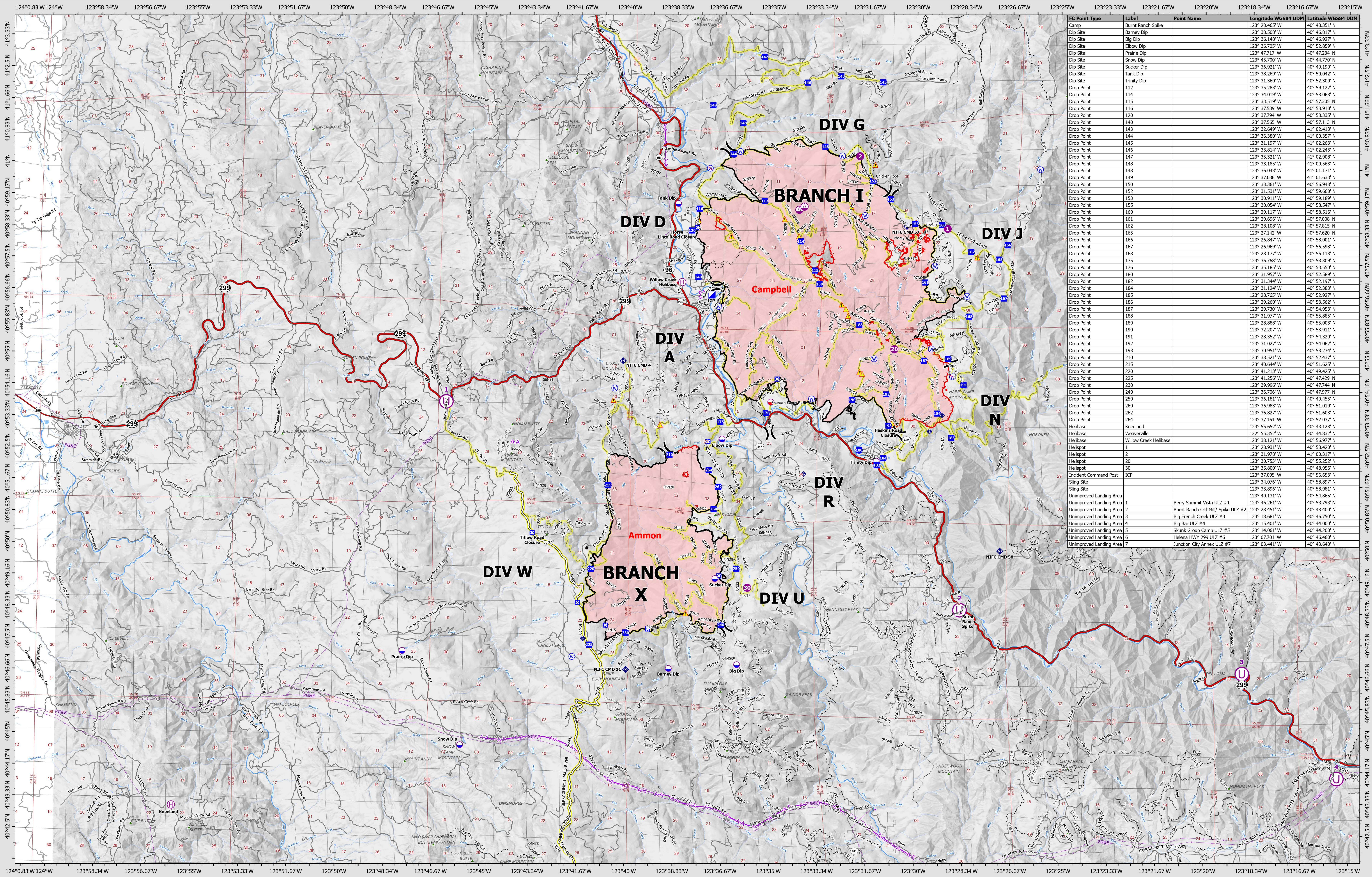


AIR TRANSPORTATION

9/5/2022



FC Point Type	Label	Point Name	Longitude WGS84 DDM	Latitude WGS84 DDM
Camp	Burnt Ranch Spike		123° 28.465' W	40° 48.351' N
Dip Site	Barney Dip		123° 38.508' W	40° 46.817' N
Dip Site	Big Dip		123° 36.148' W	40° 46.927' N
Dip Site	Elbow Dip		123° 36.705' W	40° 52.859' N
Dip Site	Prairie Dip		123° 47.717' W	40° 47.234' N
Dip Site	Snow Dip		123° 46.700' W	40° 49.190' N
Dip Site	Sucker Dip		123° 36.921' W	40° 49.190' N
Dip Site	Tank Dip		123° 38.269' W	40° 59.042' N
Dip Site	Trinity Dip		123° 31.360' W	40° 52.300' N
Drop Point	112		123° 35.283' W	40° 59.122' N
Drop Point	114		123° 34.019' W	40° 58.068' N
Drop Point	115		123° 33.519' W	40° 57.305' N
Drop Point	116		123° 37.539' W	40° 58.910' N
Drop Point	120		123° 37.794' W	40° 58.335' N
Drop Point	140		123° 37.565' W	40° 57.701' N
Drop Point	143		123° 32.649' W	41° 02.413' N
Drop Point	144		123° 36.380' W	41° 00.357' N
Drop Point	145		123° 31.197' W	41° 02.263' N
Drop Point	146		123° 33.814' W	41° 02.243' N
Drop Point	147		123° 35.321' W	41° 02.908' N
Drop Point	148		123° 33.185' W	41° 00.563' N
Drop Point	148		123° 36.043' W	41° 01.171' N
Drop Point	149		123° 37.086' W	41° 01.633' N
Drop Point	150		123° 33.361' W	40° 56.948' N
Drop Point	152		123° 31.531' W	40° 59.660' N
Drop Point	153		123° 30.911' W	40° 59.189' N
Drop Point	155		123° 30.054' W	40° 58.547' N
Drop Point	160		123° 29.117' W	40° 58.516' N
Drop Point	161		123° 29.696' W	40° 57.008' N
Drop Point	162		123° 28.108' W	40° 57.815' N
Drop Point	165		123° 27.630' W	40° 57.630' N
Drop Point	166		123° 26.847' W	40° 58.001' N
Drop Point	167		123° 26.969' W	40° 56.598' N
Drop Point	168		123° 28.177' W	40° 56.118' N
Drop Point	175		123° 36.768' W	40° 53.309' N
Drop Point	176		123° 35.185' W	40° 53.550' N
Drop Point	180		123° 31.957' W	40° 52.589' N
Drop Point	182		123° 31.344' W	40° 52.197' N
Drop Point	184		123° 31.124' W	40° 53.383' N
Drop Point	185		123° 28.765' W	40° 52.927' N
Drop Point	186		123° 29.260' W	40° 53.562' N
Drop Point	187		123° 29.730' W	40° 54.953' N
Drop Point	188		123° 31.977' W	40° 55.885' N
Drop Point	189		123° 28.888' W	40° 55.003' N
Drop Point	190		123° 32.207' W	40° 53.911' N
Drop Point	191		123° 28.320' W	40° 54.320' N
Drop Point	192		123° 31.027' W	40° 54.062' N
Drop Point	193		123° 30.951' W	40° 53.294' N
Drop Point	210		123° 38.521' W	40° 52.437' N
Drop Point	215		123° 40.644' W	40° 51.625' N
Drop Point	220		123° 41.213' W	40° 49.425' N
Drop Point	225		123° 41.256' W	40° 47.429' N
Drop Point	230		123° 39.996' W	40° 47.744' N
Drop Point	240		123° 36.706' W	40° 47.977' N
Drop Point	250		123° 36.181' W	40° 49.455' N
Drop Point	260		123° 36.983' W	40° 51.019' N
Drop Point	262		123° 36.827' W	40° 51.603' N
Drop Point	264		123° 37.161' W	40° 52.037' N
Helibase	Kneeland		123° 55.652' W	40° 43.128' N
Helibase	Weaverville		123° 55.352' W	40° 44.832' N
Helibase	Willow Creek Helibase		123° 38.121' W	40° 56.977' N
Helispot	1		123° 28.931' W	40° 58.420' N
Helispot	2		123° 31.978' W	41° 00.317' N
Helispot	20		123° 30.793' W	40° 55.232' N
Helispot	30		123° 36.800' W	40° 48.956' N
Incident Command Post	ICP		123° 37.095' W	40° 56.653' N
Sling Site			123° 34.076' W	40° 58.897' N
Sling Site			123° 33.896' W	40° 58.981' N
Unimproved Landing Area			123° 40.131' W	40° 54.865' N
Unimproved Landing Area	1	Berry Summit Vista ULZ #1	123° 46.261' W	40° 53.793' N
Unimproved Landing Area	2	Burnt Ranch Old Mill Spike ULZ #2	123° 28.451' W	40° 48.400' N
Unimproved Landing Area	3	Big French Creek ULZ #3	123° 18.681' W	40° 46.750' N
Unimproved Landing Area	4	Big Bar ULZ #4	123° 15.402' W	40° 44.000' N
Unimproved Landing Area	5	Skunk Group Camp ULZ #5	123° 14.061' W	40° 44.200' N
Unimproved Landing Area	6	Helena HWY 299 ULZ #6	123° 07.701' W	40° 46.460' N
Unimproved Landing Area	7	Junction City Annex ULZ #7	123° 03.441' W	40° 43.640' N

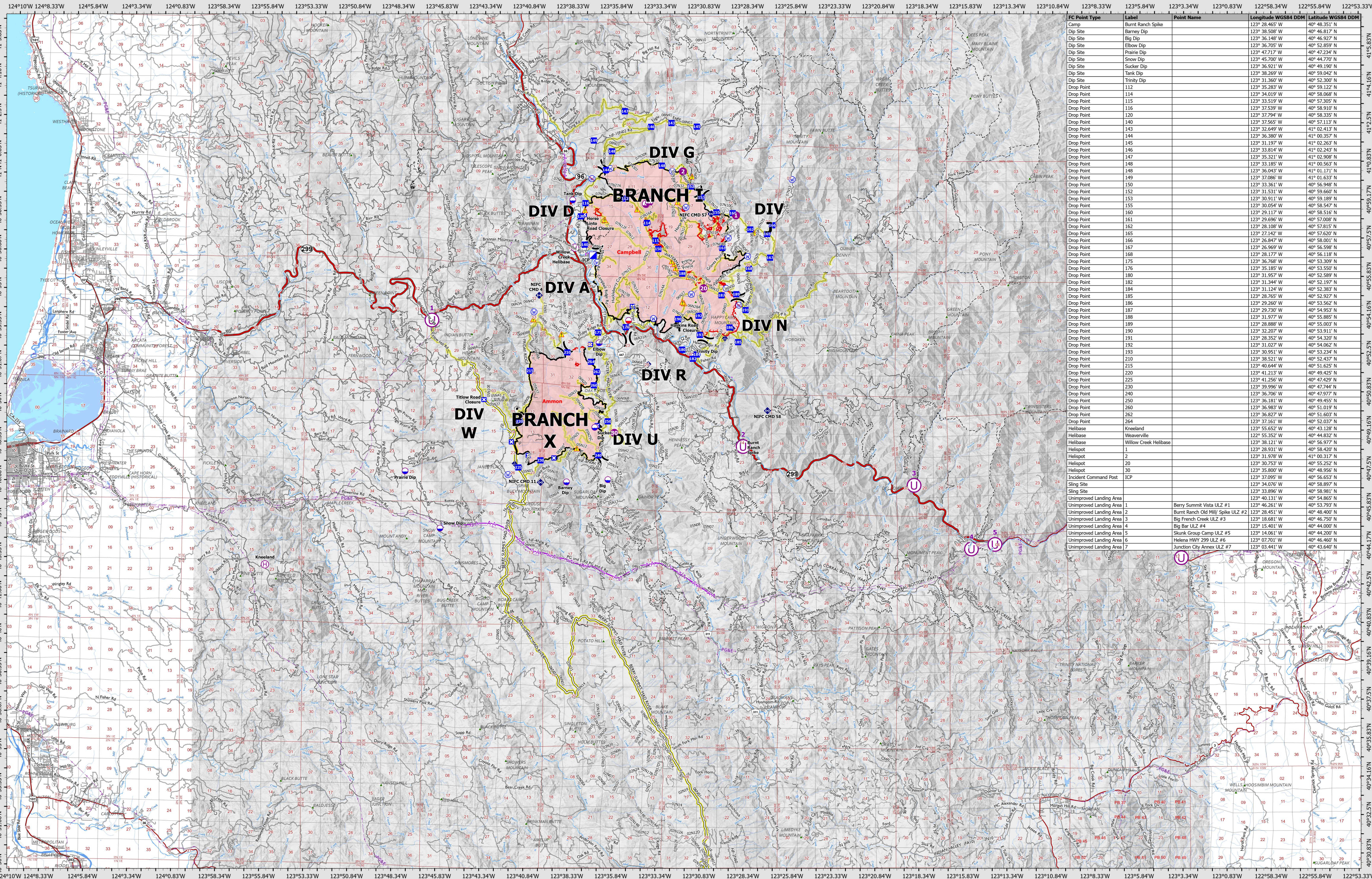
SRF Lightning Complex
 CA-SRF-000620
 9/5/2022
 41,178 acres
 IR updated 9/4/2022

- (X) Division Break
- (U) Unimproved Landing Area
- (R) Repeater
- (T) Tower
- (L) Local Connectors
- (F) Fire Perimeter
- (D) Dip Site
- (I) Incident Command Post
- (H) Hazard
- (P) Powerline
- (L) Local Roads
- (M) Mobile Retardant Base
- (D) Drop Point
- (W) Water Source
- (A) Aerial Hazard
- (T) Trails
- (H) Helispot
- (C) Closure
- (R) Restricted Water Source
- (D) Dirt Roads
- (H) Highlighted Routes
- (H) Helibase
- (A) Camp
- (B) Bridge
- (G) Gravel Roads
- (C) Contained
- (S) Sling Site
- (M) Mobile Weather Unit
- (S) Summit
- (H) Highways
- (U) Uncontained

Datum: North American 1983

AIR TRANSPORTATION

9/5/2022



FC Point Type	Label	Point Name	Longitude WGS84 DDM	Latitude WGS84 DDM
Camp	Burnt Ranch Spike		123° 28.465' W	40° 48.351' N
Dip Site	Barney Dip		123° 38.508' W	40° 46.817' N
Dip Site	Big Dip		123° 36.148' W	40° 46.927' N
Dip Site	Elbow Dip		123° 36.705' W	40° 52.859' N
Dip Site	Prairie Dip		123° 47.717' W	40° 47.234' N
Dip Site	Snow Dip		123° 45.700' W	40° 49.190' N
Dip Site	Sucker Dip		123° 36.921' W	40° 49.190' N
Dip Site	Tank Dip		123° 38.269' W	40° 59.042' N
Dip Site	Trinity Dip		123° 31.360' W	40° 52.300' N
Drop Point	112		123° 35.283' W	40° 59.122' N
Drop Point	114		123° 34.019' W	40° 58.068' N
Drop Point	115		123° 33.519' W	40° 57.305' N
Drop Point	116		123° 37.539' W	40° 58.910' N
Drop Point	120		123° 37.794' W	40° 58.335' N
Drop Point	140		123° 37.565' W	40° 57.137' N
Drop Point	143		123° 32.649' W	41° 02.413' N
Drop Point	144		123° 36.380' W	41° 00.357' N
Drop Point	145		123° 31.197' W	41° 02.263' N
Drop Point	146		123° 33.814' W	41° 02.243' N
Drop Point	147		123° 35.321' W	41° 02.908' N
Drop Point	148		123° 33.185' W	41° 00.563' N
Drop Point	148		123° 36.043' W	40° 51.171' N
Drop Point	149		123° 37.085' W	41° 01.633' N
Drop Point	150		123° 33.361' W	40° 56.948' N
Drop Point	152		123° 31.531' W	40° 59.660' N
Drop Point	153		123° 30.911' W	40° 59.189' N
Drop Point	155		123° 30.054' W	40° 58.547' N
Drop Point	160		123° 29.117' W	40° 58.516' N
Drop Point	161		123° 29.696' W	40° 57.008' N
Drop Point	162		123° 28.108' W	40° 57.815' N
Drop Point	165		123° 27.142' W	40° 57.633' N
Drop Point	166		123° 26.847' W	40° 58.001' N
Drop Point	167		123° 26.969' W	40° 56.598' N
Drop Point	168		123° 28.177' W	40° 56.118' N
Drop Point	175		123° 36.768' W	40° 53.309' N
Drop Point	176		123° 35.185' W	40° 53.550' N
Drop Point	180		123° 31.957' W	40° 52.589' N
Drop Point	182		123° 31.344' W	40° 52.197' N
Drop Point	184		123° 31.124' W	40° 53.383' N
Drop Point	185		123° 28.765' W	40° 52.927' N
Drop Point	186		123° 29.260' W	40° 53.562' N
Drop Point	187		123° 29.730' W	40° 54.953' N
Drop Point	188		123° 31.977' W	40° 55.885' N
Drop Point	189		123° 28.888' W	40° 55.003' N
Drop Point	190		123° 32.207' W	40° 53.911' N
Drop Point	191		123° 28.352' W	40° 54.320' N
Drop Point	192		123° 31.027' W	40° 54.062' N
Drop Point	193		123° 30.951' W	40° 53.294' N
Drop Point	210		123° 38.521' W	40° 52.437' N
Drop Point	215		123° 40.644' W	40° 51.625' N
Drop Point	220		123° 41.213' W	40° 49.425' N
Drop Point	225		123° 41.256' W	40° 47.429' N
Drop Point	230		123° 39.996' W	40° 47.744' N
Drop Point	240		123° 36.706' W	40° 47.977' N
Drop Point	250		123° 36.181' W	40° 49.455' N
Drop Point	260		123° 36.951' W	40° 51.019' N
Drop Point	262		123° 36.827' W	40° 51.603' N
Drop Point	264		123° 37.161' W	40° 52.037' N
Helibase	Kneeland		123° 55.652' W	40° 43.128' N
Helibase	Weaverville		122° 55.352' W	40° 44.832' N
Helibase	Willow Creek Helibase		123° 38.121' W	40° 56.977' N
Helispot	1		123° 28.931' W	40° 58.420' N
Helispot	2		123° 31.978' W	41° 00.317' N
Helispot	20		123° 36.763' W	40° 55.322' N
Helispot	30		123° 36.800' W	40° 48.956' N
Incident Command Post	ICP		123° 37.095' W	40° 56.653' N
Sling Site	1		123° 34.076' W	40° 58.897' N
Sling Site	2		123° 33.896' W	40° 58.981' N
Unimproved Landing Area			123° 40.131' W	40° 54.865' N
Unimproved Landing Area	1	Berry Summit Vista ULZ #1	123° 46.261' W	40° 53.793' N
Unimproved Landing Area	2	Burnt Ranch Old Mill Spike ULZ #2	123° 28.451' W	40° 48.400' N
Unimproved Landing Area	3	Big French Creek ULZ #3	123° 18.681' W	40° 45.750' N
Unimproved Landing Area	4	Big Bar ULZ #4	123° 12.402' W	40° 49.400' N
Unimproved Landing Area	5	Skunk Group Camp ULZ #5	123° 14.061' W	40° 44.200' N
Unimproved Landing Area	6	Helena HWY 299 ULZ #6	123° 07.701' W	40° 46.460' N
Unimproved Landing Area	7	Junction City Annex ULZ #7	123° 03.441' W	40° 43.640' N

SRF Lightning Complex
 CA-SRF-000620
 9/5/2022
 41,178 acres
 IR updated 9/4/2022

- ⊕ Division Break
- ⊖ Dip Site
- ⊙ Mobile Retardant Base
- ⊙ Helispot
- ⊙ Helibase
- ⊙ Sling Site
- ⊙ Incident Command Post
- ⊙ Drop Point
- ⊙ Closure
- ⊙ Camp
- ⊙ Mobile Weather Unit
- ⊙ Repeater
- ⊙ Hazard
- ⊙ Water Source
- ⊙ Restricted Water Source
- ⊙ Bridge
- ⊙ Summit
- ⊙ Tower
- ⊙ Powerline
- ⊙ Aerial Hazard
- ⊙ Dirt Roads
- ⊙ Gravel Roads
- ⊙ Highways
- ⊙ Local Connectors
- ⊙ Local Roads
- ⊙ Trails
- ⊙ Highlighted Routes
- ⊙ Contained
- ⊙ Uncontained
- ⊙ Fire Perimeter

UAS
 California Department of Forestry and Fire Protection
 Scale: 0 0.75 1.5 Miles
 Datum: North American 1983