

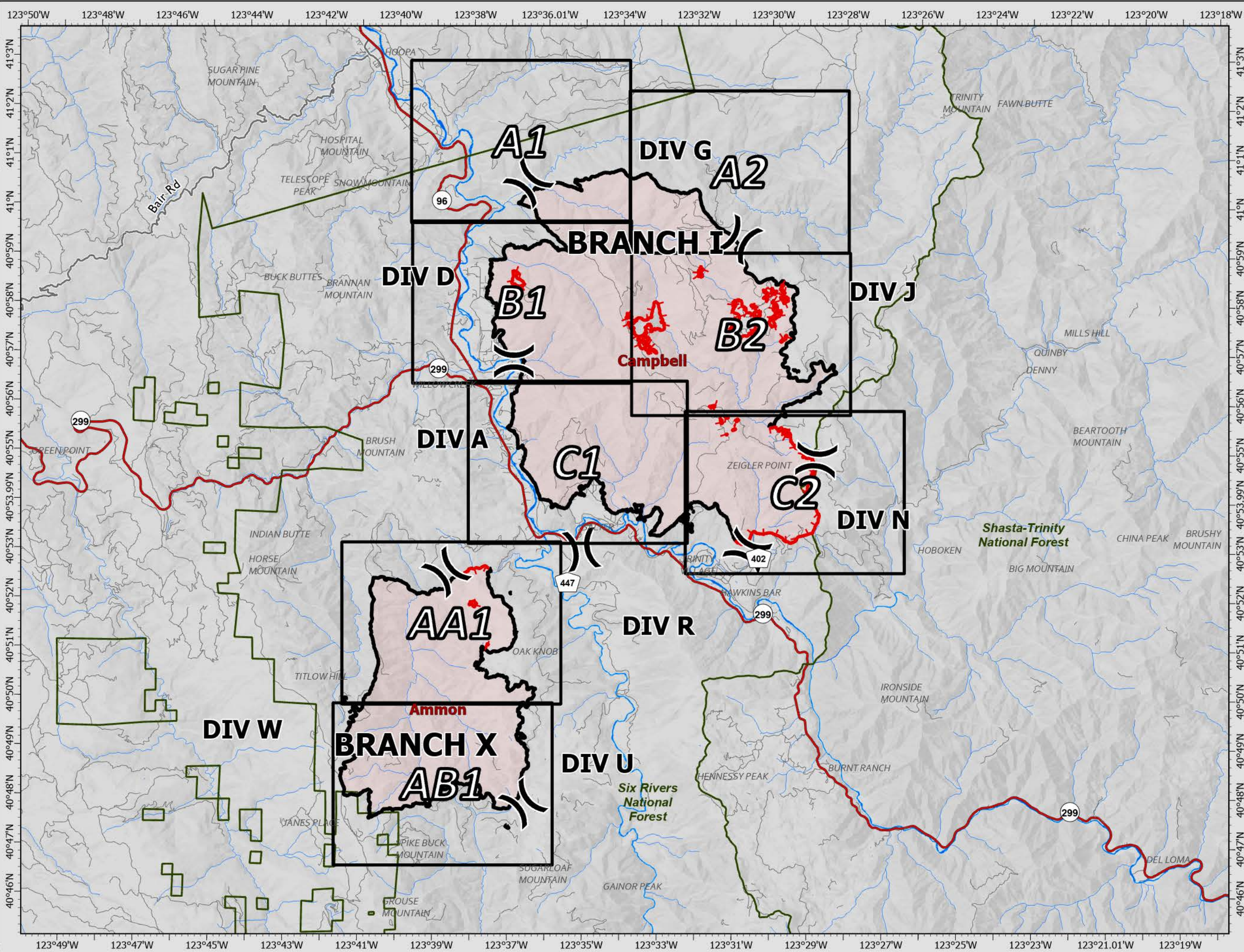
IAP

SRF Lightning Complex

CA-SRF-000620
9/5/2022

41,178 acres
IR updated 9/4/2022

- () Division Break
- ▬ Contained
- ▬ Uncontained
- ▭ Wildfire Daily Fire Perimeter
- ▬ Highways
- ▬ Local Connectors
- ▬ Local Roads
- ▭ Map Grid Index



0 0.5 1 2 Miles
Datum: North American 1983
Author Name Updated: 9/4/2022 2222

SRF Lightning Complex

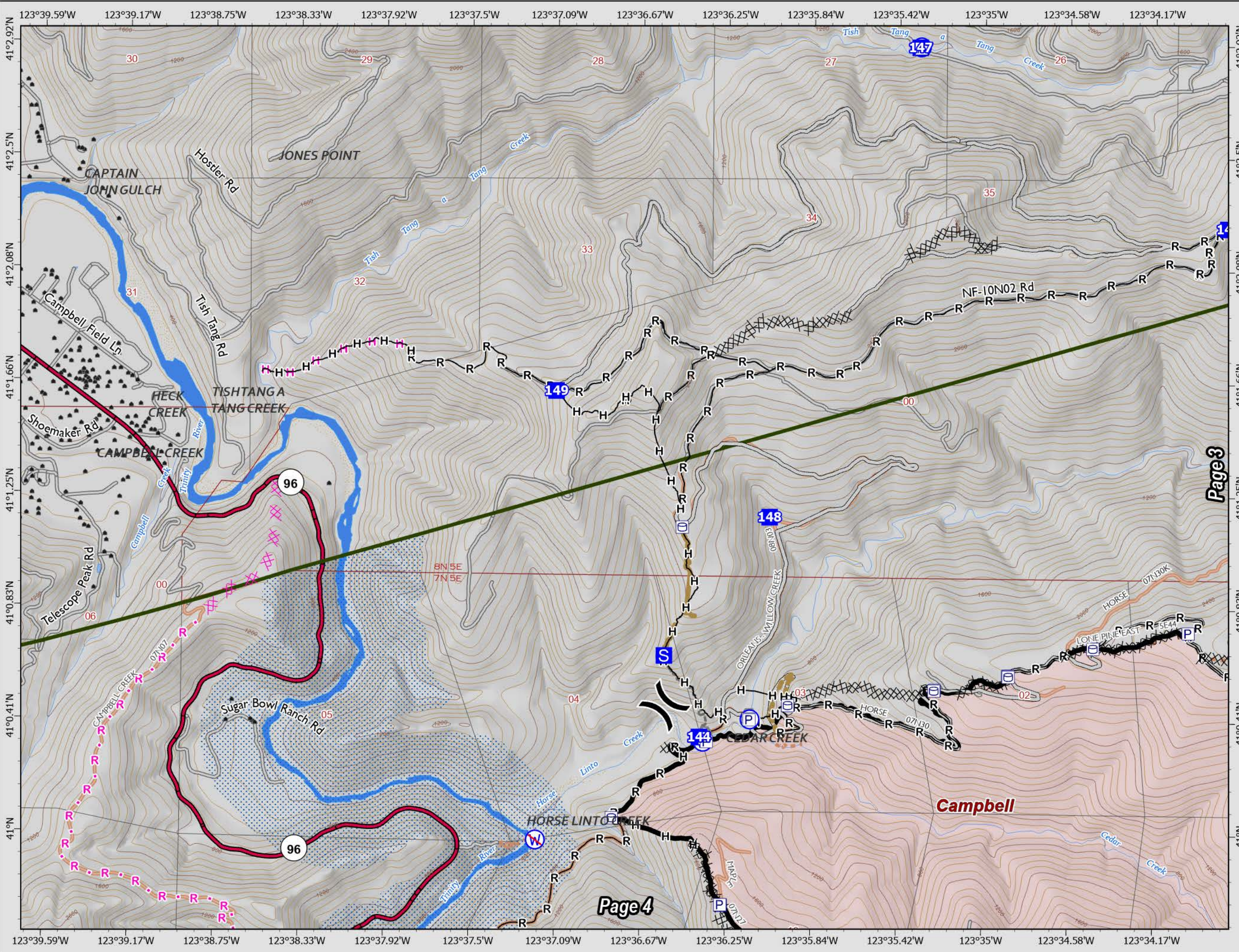
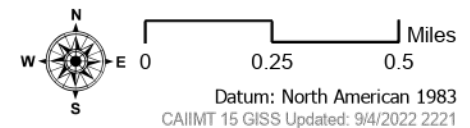
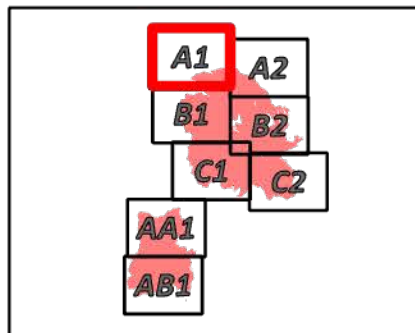
CA-SRF-000620

9/5/2022

41,178 acres
IR updated 9/4/2022

- Pump
- Water Tank
- Division Break
- Drop Point
- Staging Area
- Value at Risk
- Bridge
- Water Source
- Restricted Water Source
- Completed Dozer Line
- Completed Hand Line
- Completed Road as Line
- Planned Dozer Line
- Planned Hand Line
- Planned Road as Line
- Access or Improved Road
- Other
- Repair Line
- Road Repair
- Contained
- Wildfire Daily Fire Perimeter
- County Boundary
- Forest Administrative Boundary
- Highways
- Local Roads
- Non Paved Roads
- Trails

Branch I Division D & G



SRF Lightning Complex

CA-SRF-000620

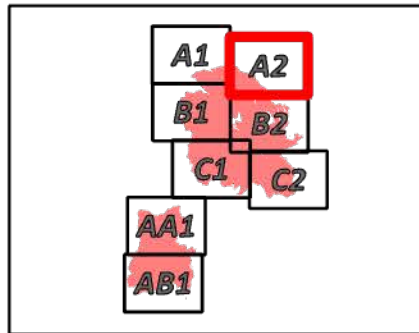
9/5/2022

41,178 acres

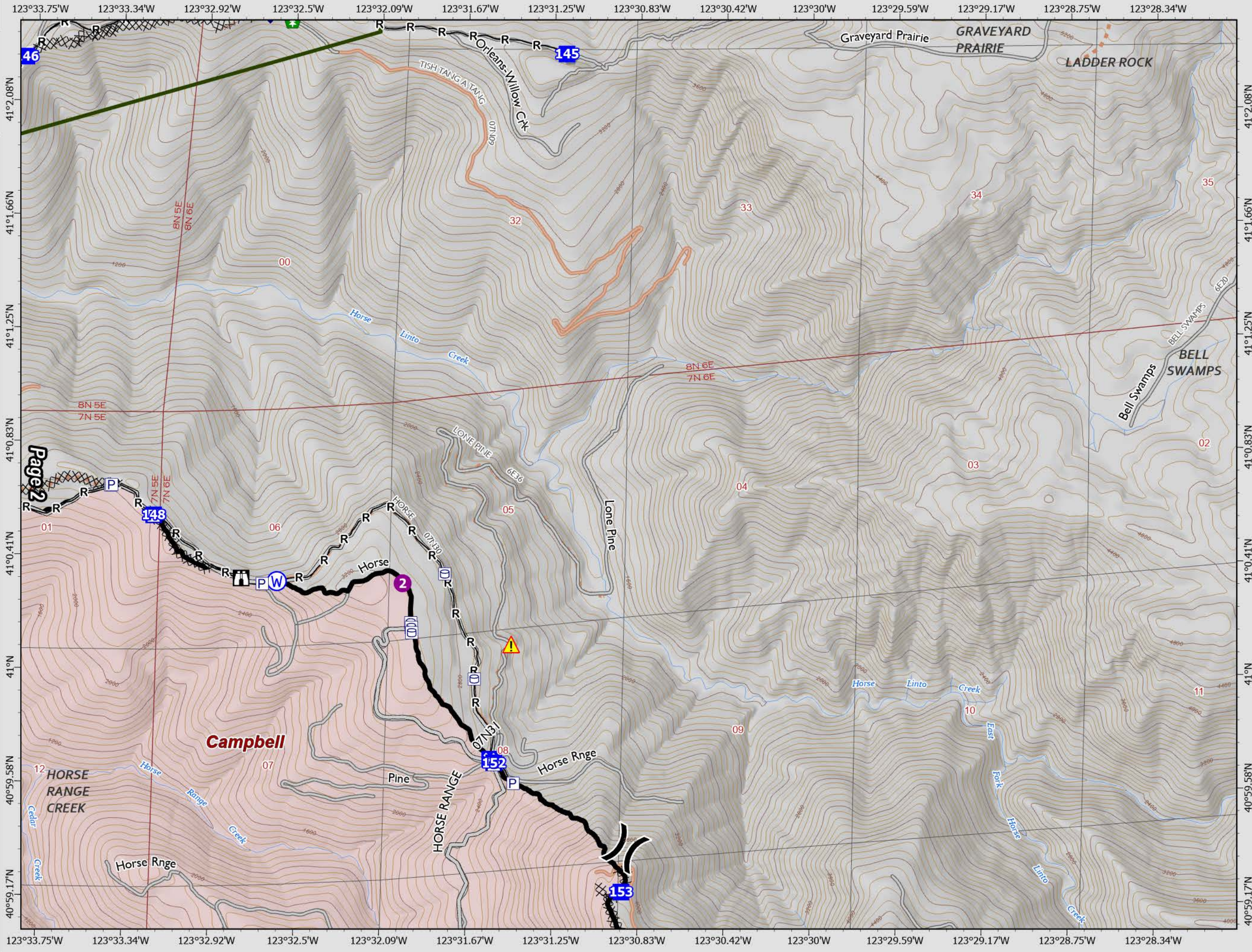
IR updated 9/4/2022

- Pump
- Water Tank
- Helispot
- Sling Site
- Division Break
- Drop Point
- Closure
- Lookout
- Landmark
- Hazard Tree
- Mobile Weather Unit
- Hazard
- Water Source
- Completed Dozer Line
- Completed Road as Line
- Access or Improved Road
- Contained
- Wildfire Daily Fire Perimeter
- County Boundary
- Forest Administrative Boundary
- Local Roads
- Non Paved Roads
- Trails

Branch I
Division G & J



Datum: North American 1983
CAIIMT 15 GIS Updated: 9/4/2022 2221



SRF Lightning Complex

CA-SRF-000620

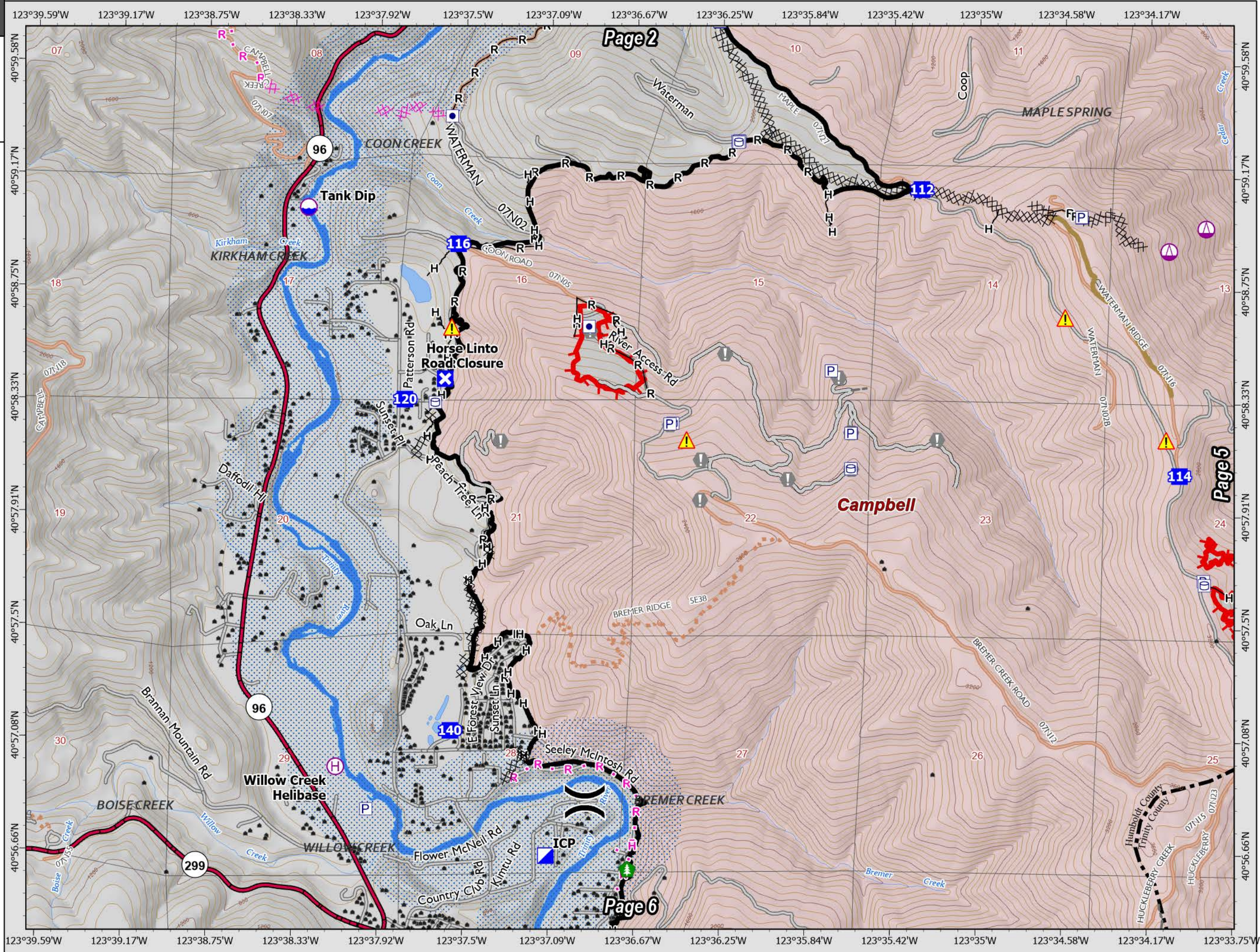
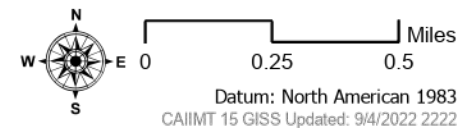
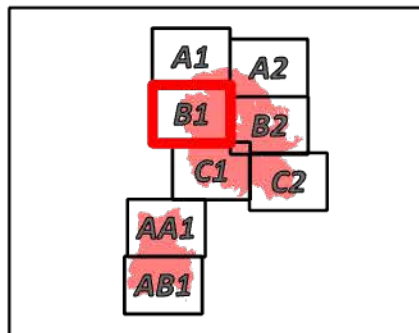
9/5/2022

41,178 acres

IR updated 9/4/2022

- Other Property
- Pump
- Water Tank
- Dip Site
- Helibase
- Sling Site
- Division Break
- Incident Command Post
- Drop Point
- Closure
- Value at Risk
- Hazard Tree
- Hazard
- Water Source
- Completed Dozer Line
- Completed Hand Line
- Completed Road as Line
- Planned Dozer Line
- Planned Hand Line
- Planned Road as Line
- Access or Improved Road
- Other
- Repair Line
- Contained
- Uncontained
- Wildfire Daily Fire Perimeter
- County Boundary
- Forest Administrative Boundary
- Highways
- Local Roads
- Non Paved Roads
- Trails

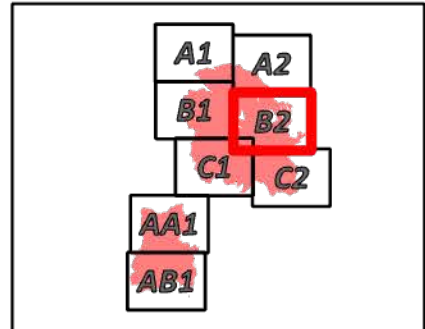
Branch I
Division A & D



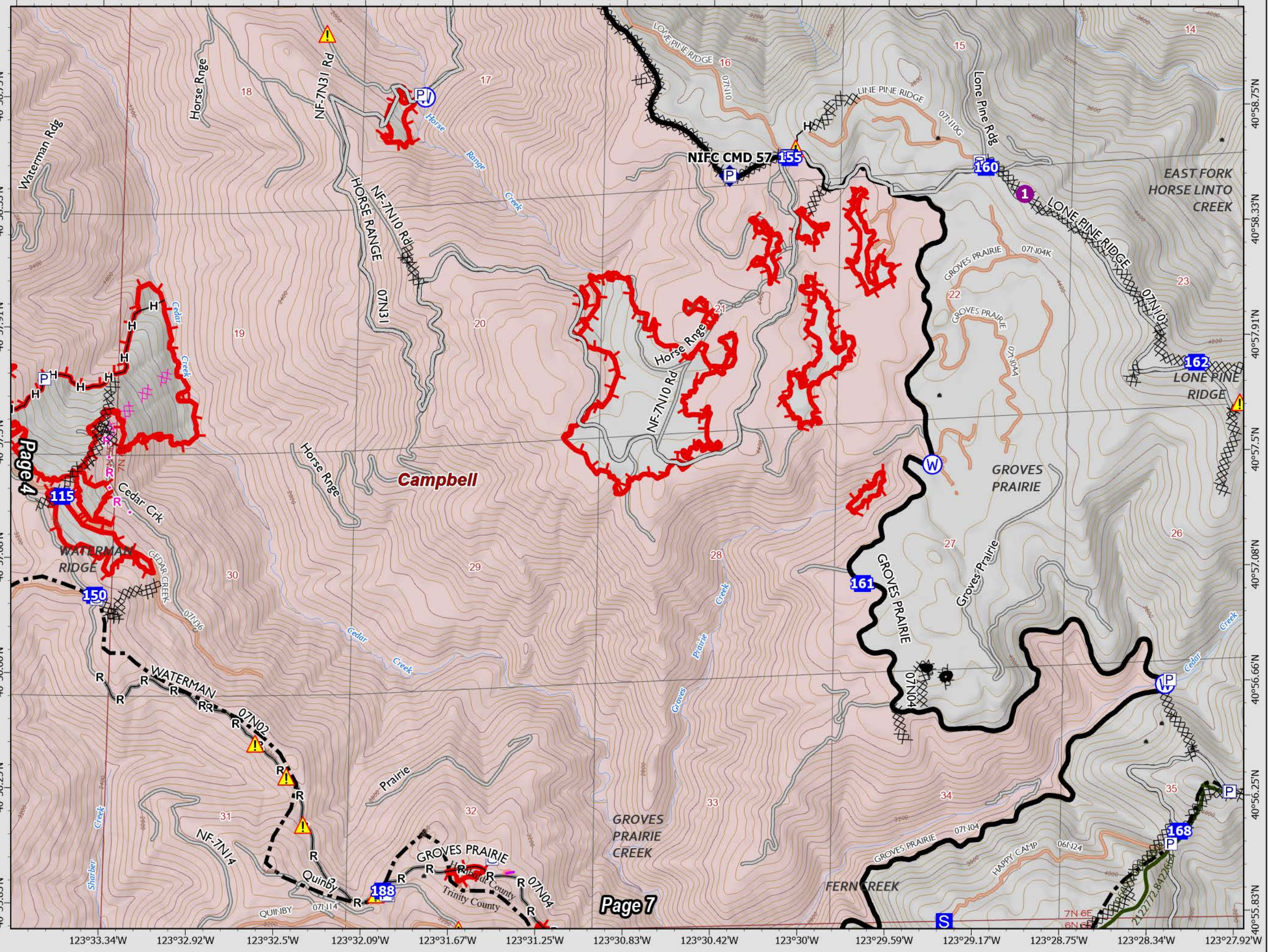
SRF Lightning Complex
CA-SRF-000620
9/5/2022
41,178 acres
IR updated 9/4/2022

- Pump
- Water Tank
- Helispot
- Sling Site
- Drop Point
- Staging Area
- Repeater
- Hazard
- Water Source
- Completed Dozer Line
- Completed Hand Line
- Completed Road as Line
- Planned Burnout
- Planned Dozer Line
- Planned Road as Line
- Access or Improved Road
- Retardant Drop
- Contained
- Uncontained
- Wildfire Daily Fire Perimeter
- County Boundary
- Forest Administrative Boundary
- Local Roads
- Non Paved Roads
- Trails

**Branch I
Division J**



Datum: North American 1983
CAIIMT 15 GIS Updated: 9/4/2022 2222



40°58.75'N
40°58.33'N
40°57.91'N
40°57.5'N
40°57.08'N
40°56.66'N
40°56.25'N
40°55.83'N

40°58.75'N
40°58.33'N
40°57.91'N
40°57.5'N
40°57.08'N
40°56.66'N
40°56.25'N
40°55.83'N

SRF Lightning Complex

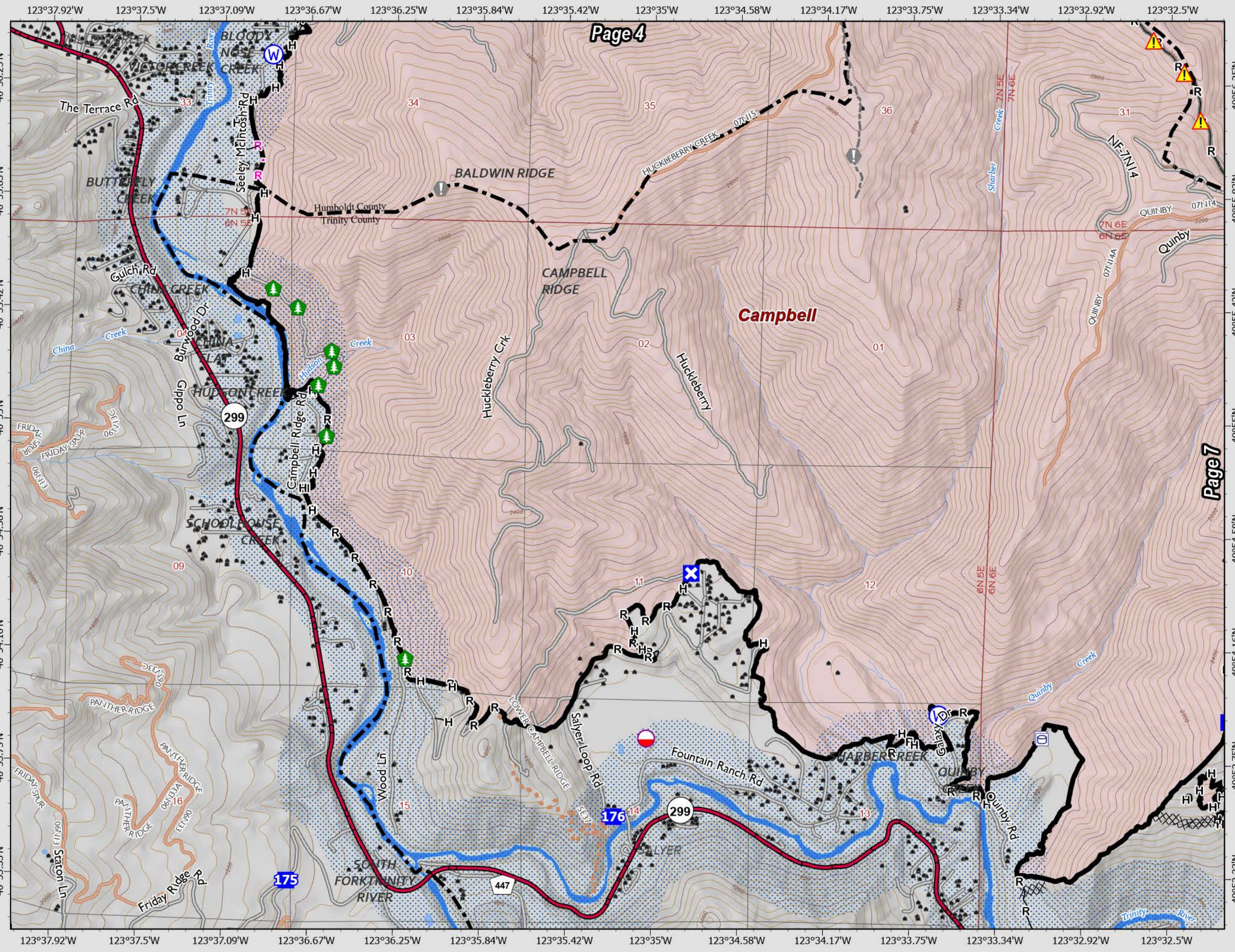
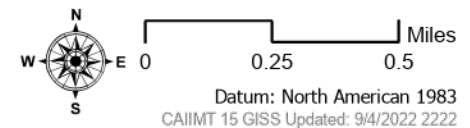
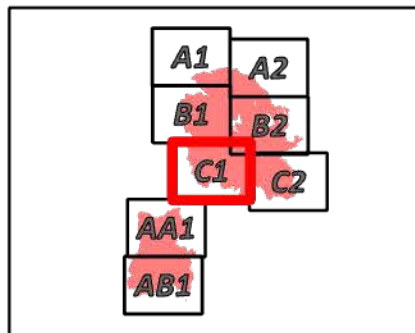
CA-SRF-000620

9/5/2022

41,178 acres
IR updated 9/4/2022

- Water Tank
- Mobile Retardant Base
- Drop Point
- Closure
- Lookout
- Value at Risk
- Hazard Tree
- Hazard
- Water Source
- Completed Dozer Line
- Completed Hand Line
- Completed Road as Line
- Planned Road as Line
- Access or Improved Road
- Other
- Contained
- Wildfire Daily Fire Perimeter
- County Boundary
- Forest Administrative Boundary
- Highways
- Local Roads
- Non Paved Roads
- Trails

Branch I & X
Division A & R



SRF Lightning Complex

CA-SRF-000620

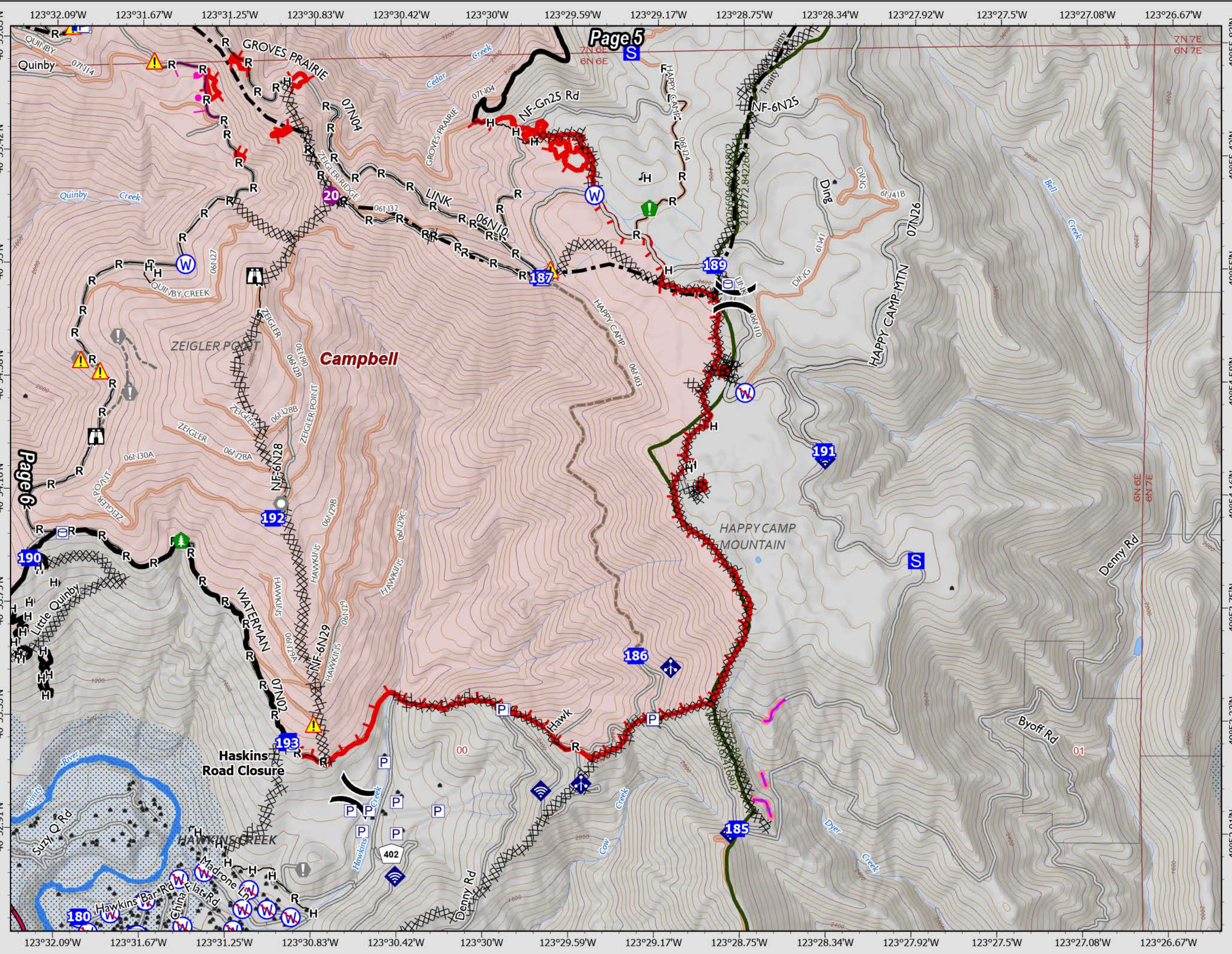
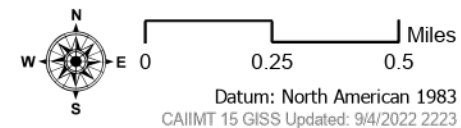
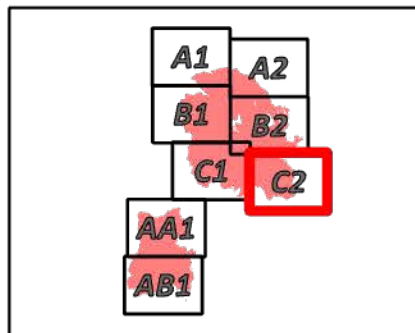
9/5/2022

41,178 acres

IR updated 9/4/2022

- Pump
- Water Tank
- Helispot
- Division Break
- Drop Point
- Closure
- Staging Area
- Lookout
- Value at Risk
- Landmark
- Resource Location
- Hazard Tree
- Mobile Weather Unit
- Internet Access
- Hazard
- Water Source
- Restricted Water Source
- Completed Dozer Line
- Completed Hand Line
- Completed Road as Line
- Planned Burnout
- Access or Improved Road
- Other
- Repair Line
- Retardant Drop
- Contained
- Uncontained
- Wildfire Daily Fire Perimeter
- County Boundary
- Forest Administrative Boundary
- Highways
- Local Roads
- Non Paved Roads
- Trails

Branch I
Division N & R



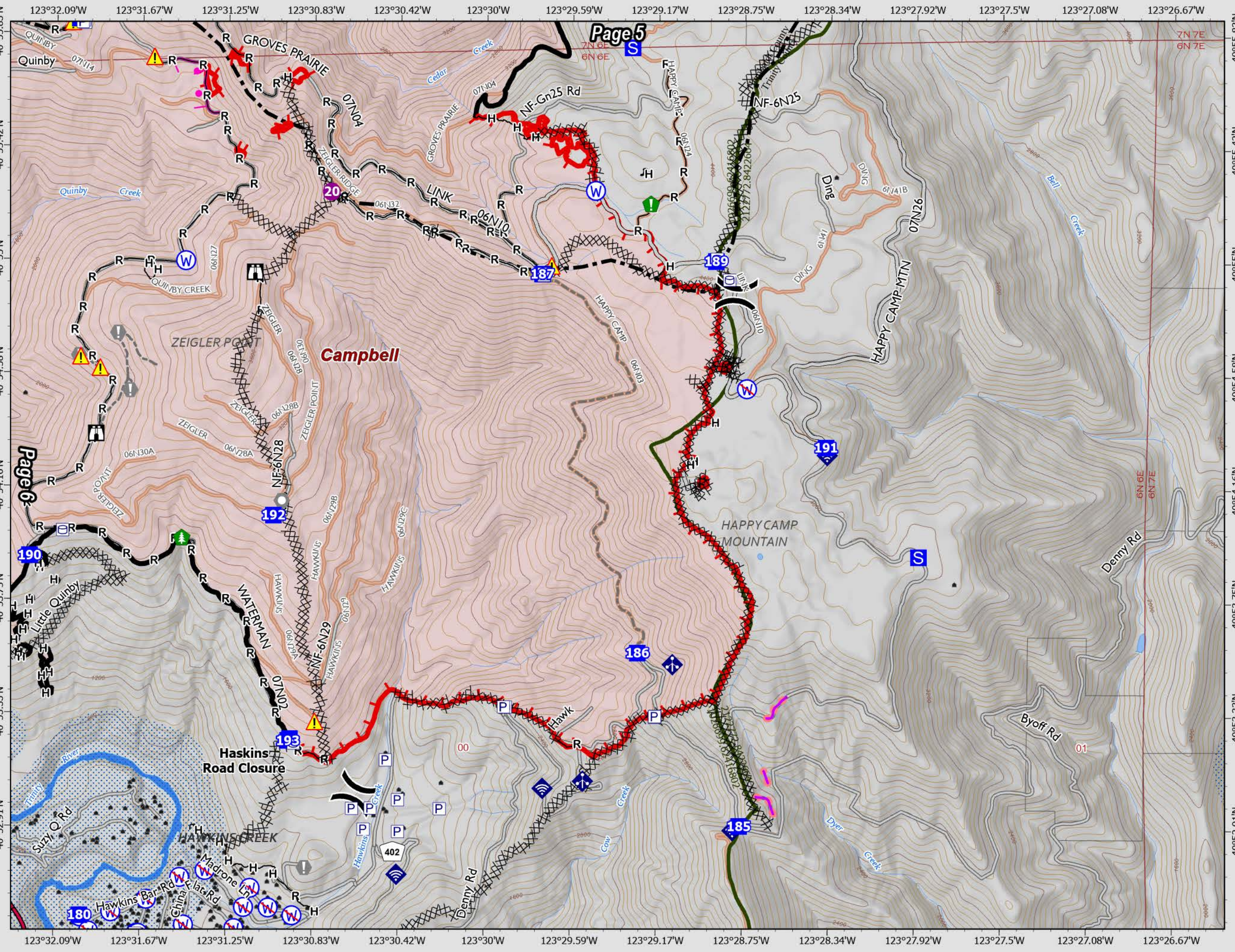
Page 5

Page 6

Campbell

HAPPY CAMP MOUNTAIN

Haskins Road Closure



SRF Lightning Complex

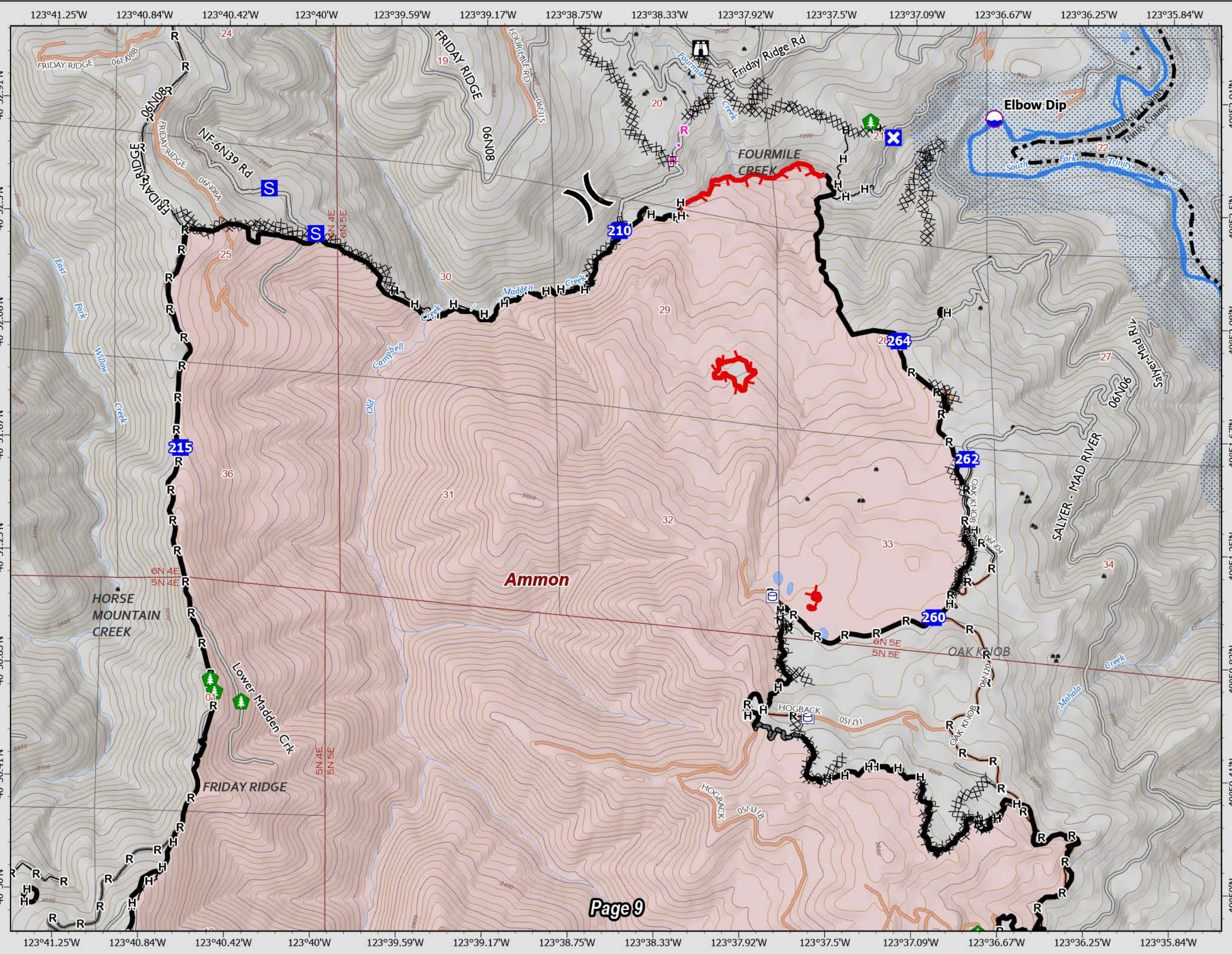
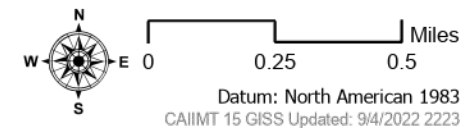
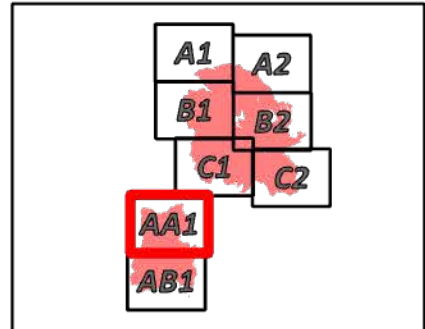
CA-SRF-000620

9/5/2022

41,178 acres
IR updated 9/4/2022

- Water Tank
- Dip Site
- Division Break
- Drop Point
- Closure
- Staging Area
- Lookout
- Hazard Tree
- Hazard
- Completed Dozer Line
- Completed Hand Line
- Completed Road as Line
- Planned Road as Line
- Access or Improved Road
- Other
- Contained
- Uncontained
- Wildfire Daily Fire Perimeter
- County Boundary
- Forest Administrative Boundary
- Local Roads
- Non Paved Roads
- Trails

Branch X
Division W & U North



SRF Lightning Complex
CA-SRF-000620
9/5/2022
41,178 acres
IR updated 9/4/2022

- Other Property
- Pump
- Water Tank
- Dip Site
- Helispot
- Division Break
- Drop Point
- Closure
- Hazard Tree
- Mobile Weather Unit
- Repeater
- Hazard
- Completed Dozer Line
- Completed Fuel Break
- Completed Hand Line
- Completed Road as Line
- Planned Dozer Line
- Access or Improved Road
- Other
- Contained
- Wildfire Daily Fire Perimeter
- County Boundary
- Forest Administrative Boundary
- Local Roads
- Non Paved Roads
- Trails

Branch X
Division W & U South

