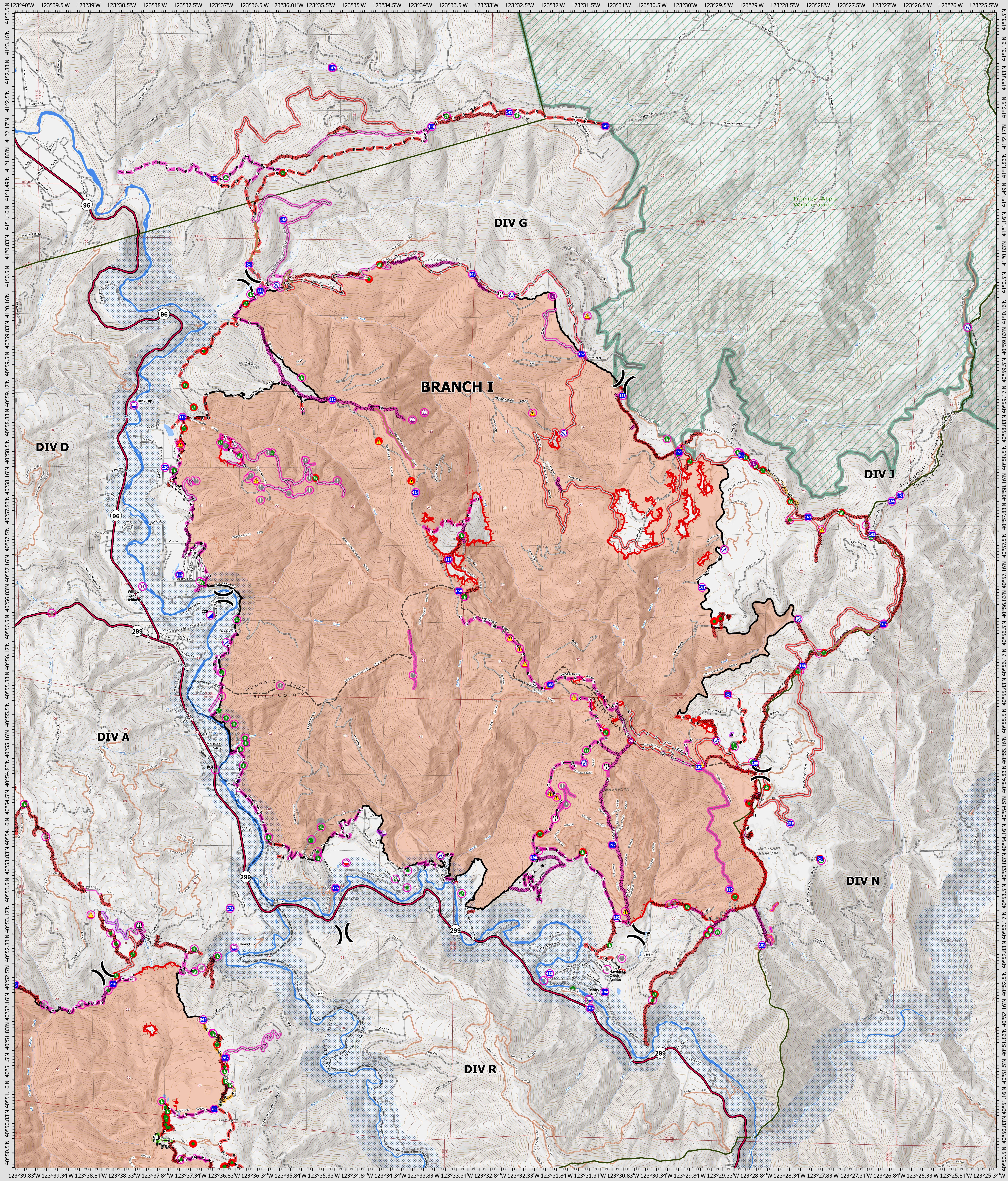


# Suppression Repair Branch I

9/5/2022



**SRF Lightning Complex**  
 CA-SRF-000620  
 9/5/2022  
 41,296 acres  
 IR updated 9/4/2022

- |  |   |   |   |   |
|--|---|---|---|---|
| <b>Repair Status Point</b><br><ul style="list-style-type: none"> <li><span style="color: red;">●</span> In Use - Fire Management</li> <li><span style="color: red;">○</span> Repair Needed</li> <li><span style="color: black;">○</span> No Repair Needed</li> <li><span style="color: grey;">○</span> Other - See Comments</li> </ul> | <b>Repair Status Line</b><br><ul style="list-style-type: none"> <li><span style="color: red;">—</span> In Use - Fire Management</li> <li><span style="color: red;">—</span> Repair Needed</li> <li><span style="color: yellow;">—</span> In Progress</li> <li><span style="color: green;">—</span> Completed - Ready for Inspection</li> <li><span style="color: green;">—</span> Completed - Inspected</li> <li><span style="color: grey;">—</span> No Repair - See Comments</li> <li><span style="color: black;">—</span> Contained</li> <li><span style="color: black;">—</span> Uncountained</li> <li><span style="color: blue;">—</span> Dip Site</li> </ul> | <ul style="list-style-type: none"> <li><span style="color: red;">○</span> Mobile Retardant Base</li> <li><span style="color: red;">○</span> Helispot</li> <li><span style="color: red;">○</span> Helibase</li> <li><span style="color: red;">○</span> Sling Site</li> <li><span style="color: red;">○</span> Unimproved Landing Area</li> <li><span style="color: blue;">X</span> Division Break</li> <li><span style="color: blue;">X</span> Incident Command Post</li> <li><span style="color: blue;">X</span> Drop Point</li> <li><span style="color: blue;">X</span> Staging Area</li> <li><span style="color: blue;">X</span> Lookout</li> <li><span style="color: blue;">X</span> Value at Risk</li> <li><span style="color: blue;">X</span> Other</li> <li><span style="color: blue;">X</span> Bridge</li> </ul> | <ul style="list-style-type: none"> <li><span style="color: green;">○</span> Water Development or Draft Site</li> <li><span style="color: green;">○</span> Structure Wrap</li> <li><span style="color: green;">○</span> Road Repair</li> <li><span style="color: green;">○</span> Resource Location</li> <li><span style="color: green;">○</span> Repair Point</li> <li><span style="color: green;">○</span> Landing or Log Deck</li> <li><span style="color: green;">○</span> Hazard Tree</li> <li><span style="color: green;">○</span> Fence - Cut/Damaged</li> <li><span style="color: green;">○</span> Dozer Push</li> <li><span style="color: green;">○</span> Culvert</li> <li><span style="color: green;">○</span> Clean Up Area</li> <li><span style="color: green;">○</span> Hazard</li> <li><span style="color: green;">○</span> Water Source</li> </ul> | <ul style="list-style-type: none"> <li><span style="color: red;">—</span> Completed Dozer Line</li> <li><span style="color: red;">—</span> Completed Hand Line</li> <li><span style="color: red;">—</span> Completed Road as Line</li> <li><span style="color: red;">—</span> Access or Improved Road</li> <li><span style="color: red;">—</span> Other</li> <li><span style="color: red;">—</span> Repair Line</li> <li><span style="color: red;">—</span> Road Repair</li> <li><span style="color: red;">—</span> Retardant Drop</li> <li><span style="color: red;">—</span> Wildfire Daily Fire Perimeter</li> <li><span style="color: red;">—</span> Wild &amp; Scenic Rivers</li> <li><span style="color: red;">—</span> Wilderness</li> </ul> |
|--|---|---|---|---|



Datum: North American 1983  
GIS Updated: 9/5/2022 0609